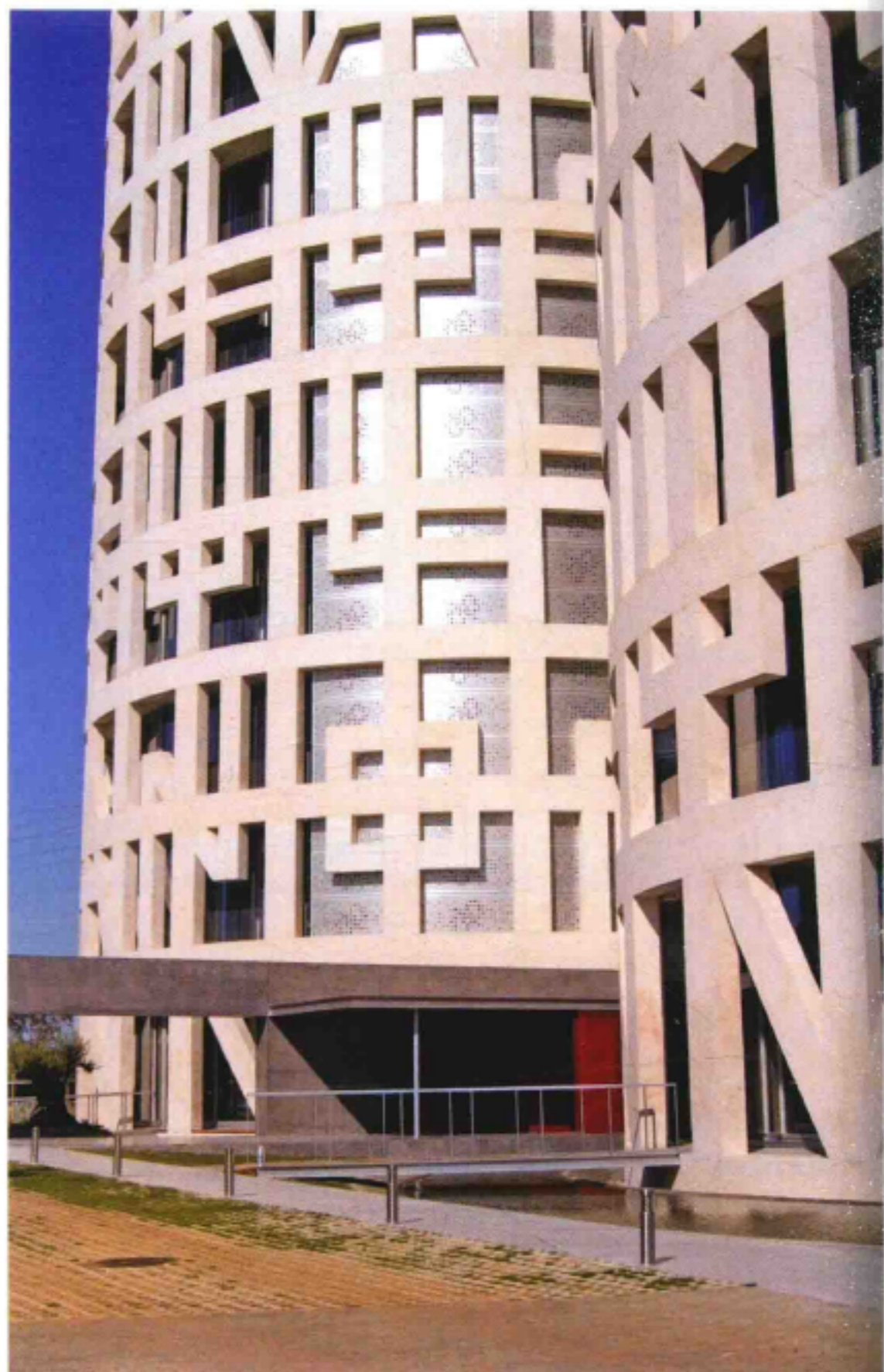




Overall view 全景图



Side look 建筑侧景

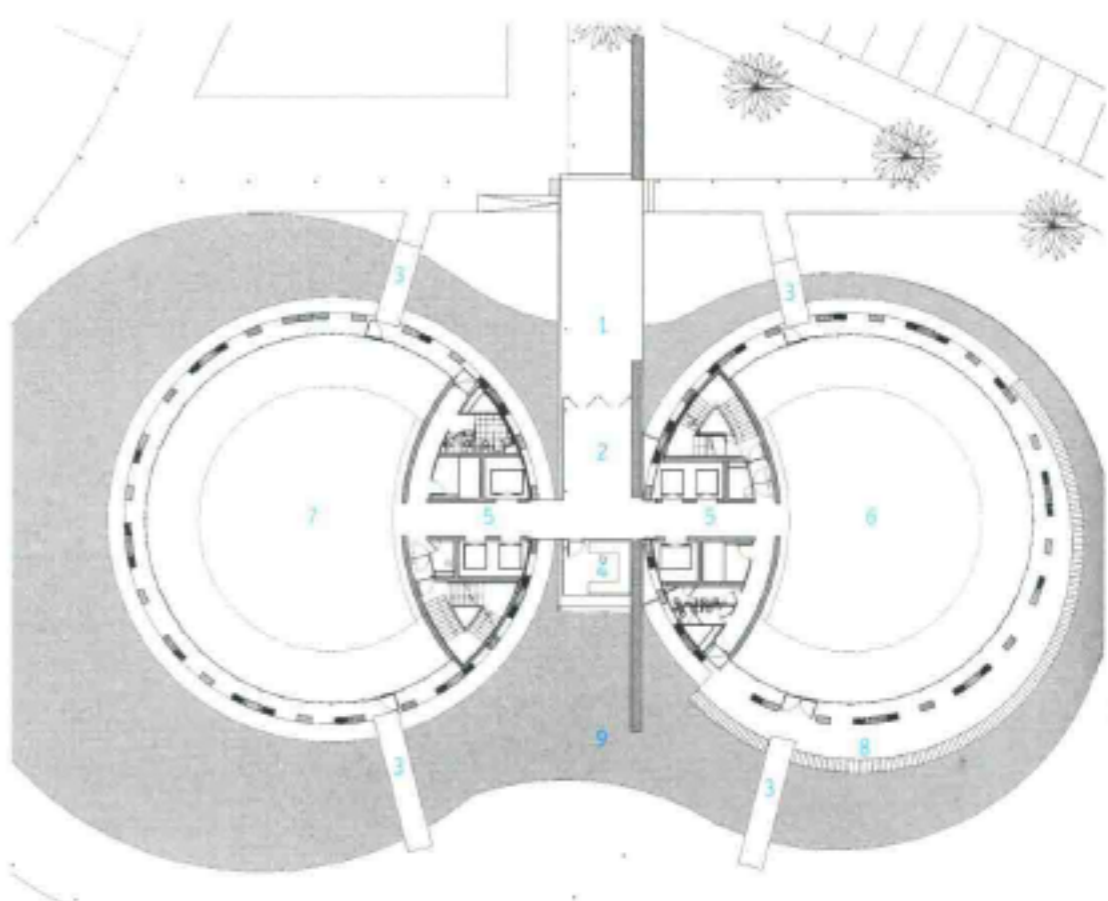
Torres de Hércules

Located in the Bay of Algeciras (Cadiz), the new construction, which is surrounded by a man-made lake, is composed of two identical twenty-storey cylindrical towers, joined by a crystalline prism which houses the hallways connecting the two buildings. Its outer appearance is configured by the structure of the building, a gigantic lattice which completely surrounds the perimeter. There are the giant letters of the legend "Non Plus Ultra". Their job is to protect the inside of the building from excess solar radiation while providing panoramic views of the Bay of Algeciras, the Rock of Gibraltar, and the Serrania. This grid extends past the building's limits, as a "unique element" protecting the terrace roof-top deck, while at the same time acting as a base for possible energy collecting and telecommunications systems.

On the top floor, eighty metres up, will be a lookout restaurant. Above this, a panoramic roof-top deck will boast unique views over the Strait of Gibraltar, Mount Musa and the Alcornocales Natural Park. The building has a main entrance for pedestrians and cars which provides a clear view of the towers. The 200-spot ground-level parking lot is located on the other side of the towers and is organised around a landscaped area.

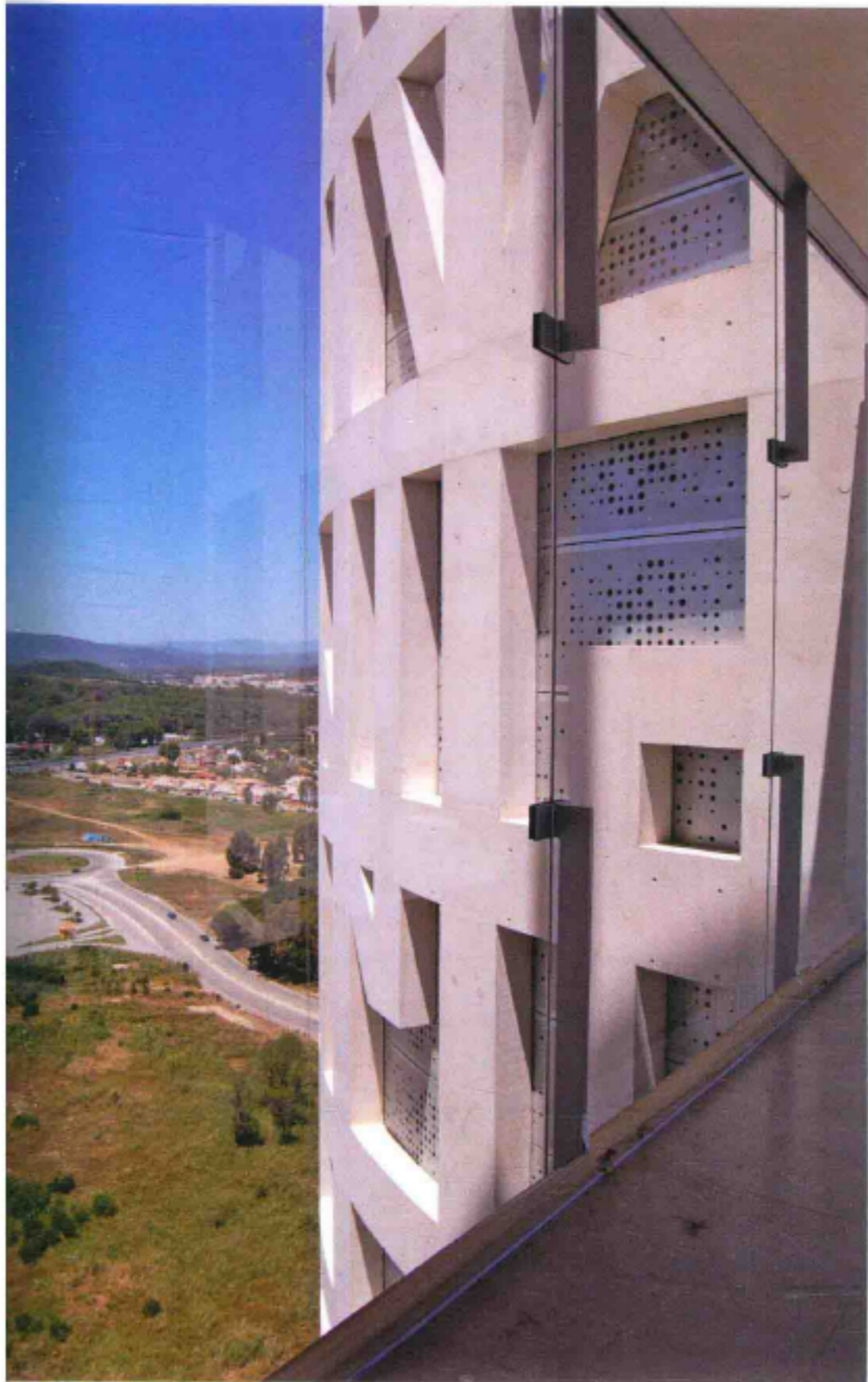
大力神大厦

大厦坐落在阿尔赫西拉斯湾，四周为人工湖围绕，由两幢相同的20层圆柱形塔楼构成，中间通过透明的棱镜状结构连通。大厦外观是巨大的格子结构，硕大的字母“Non Plus Ultra”镶嵌其上，格外醒目。设计的主要任务是防止室内太阳光线的过度照射，但同时确保视线清晰，便于欣赏外面的景致。格子结构将整幢建筑围裹起来，实现了设计的初衷。建筑顶层是一个观景餐厅，将直布罗陀海峡、穆萨山峰的壮丽美景尽收眼底。此外，行人及车辆通过的主入口也别具特色，200个车位的停车场位于大厦的另一侧，四周种植着各种植物。

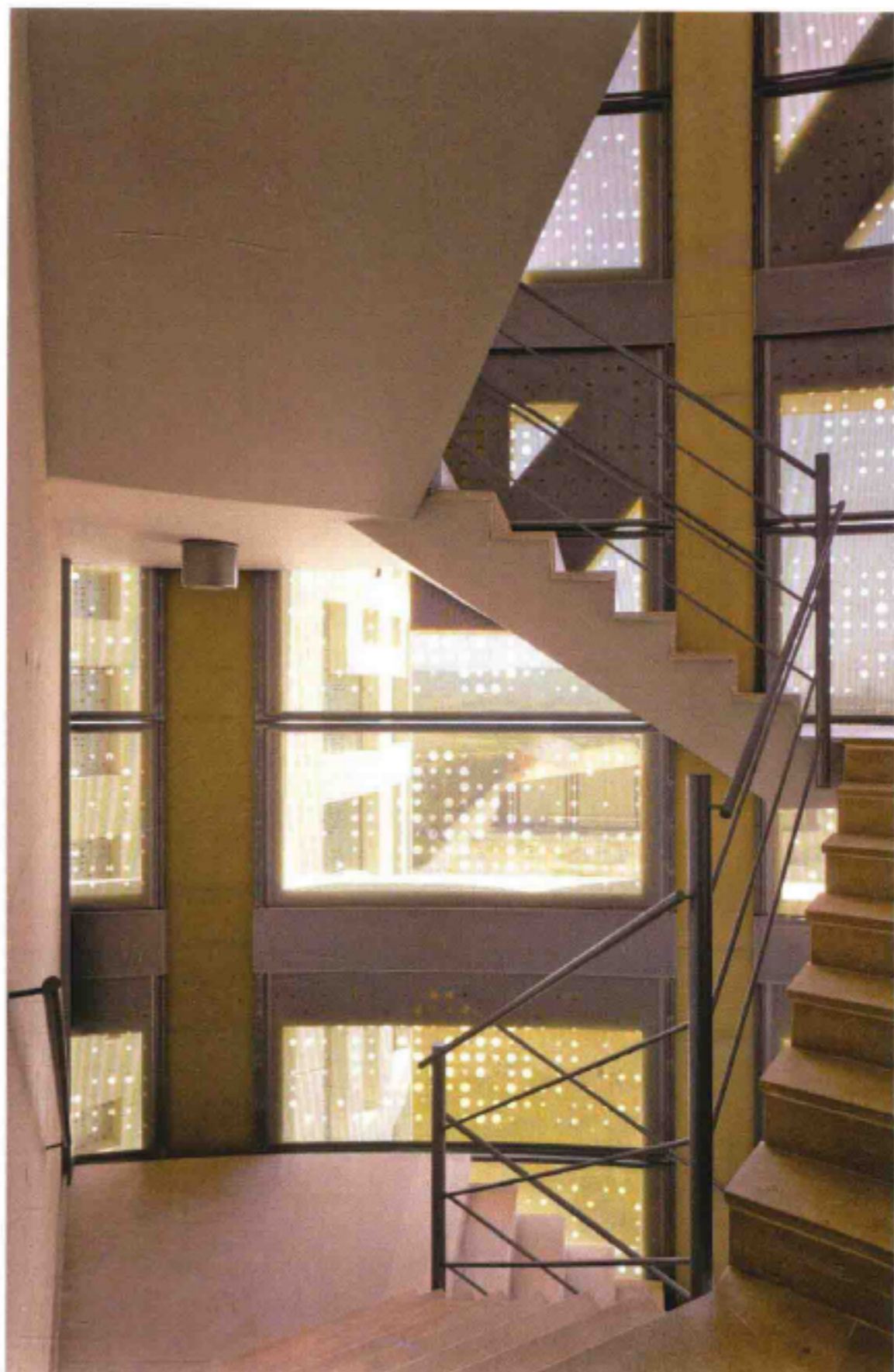


1. main entrance/canopy
2. entrance lobby
3. side entrance/bridges
4. reception
5. lift lobby
6. cafeteria/bar
7. commercials
8. terrace
9. water

1. 主入口/亭盖
2. 门厅
3. 侧门/廊桥
4. 前台
5. 电梯大厅
6. 餐厅/酒吧
7. 商业区
8. 平台
9. 水景



建筑细节 Details



楼梯 Stairs



建筑内部 Inside view

Photo: Rafael de La-Hoz Castanyes

Corporate

Completion Date: 2009

Architect: Rafael de La-Hoz Castanyes