

# JINGHU NEW CITY EXPERIMENTAL SCHOOL

## 镜湖新城实验学校

用地面积	建筑面积	设计时间	建筑类型
32 402平方米	22 020平方米	2009年	文化教育

镜湖新城实验学校位于芜湖市镜湖世纪城5号地块，为周边住区提供了优质的教育配套。学校入口由实验楼、大礼堂和风雨操场半围合而成了生活广场，营造了师生课余时间休憩交流的场所，形成了每个孩子在这里共同生活成长的记忆。学校东侧的静区是由教学部围合的院落，它的灵感来自于东方的书院，庭院内枝繁叶茂的智慧之树下，孩子围坐着听老师传道授业解惑。教学楼的外廊运用了柠檬黄、青草绿作为主色调，每层变化的出挑阳台不仅活跃了形体造型，更让孩子们课间生活有了趣味。实验楼、风雨操场、行政楼和教学楼出自一种设计手法，彼此间又有气质的不同。简单纯净、活泼有趣，就是镜湖新城实验学校设计的初衷。

Jinghu New City Experimental School is located on Jinghu Century City Plot 5 in Wuhu City and provides high-quality educational supporting facilities for surrounding areas. At the school entrance, laboratory building, auditorium and outdoor playground surround a life square, providing a public space for teachers and students to communicate and rest after class and for children to enjoy themselves. The silent zone at east of the school is a courtyard formed by teaching buildings and the design concept is inspired from the oriental Academy. Wisdom trees are planted in the courtyard, providing a peaceful space for students to learn knowledge. External corridor in the teaching building is painted with lemon yellow and grass green as dominant hues. Diversified cantilever balconies on each floor realize vigorous building appearance and provide more interests for children during break time. Laboratory building, outdoor playground, administration building and teaching building are designed with the same concept, but also remain different characteristics. Simplicity, purity, vigor and interest are design concepts of the Jinghu New City Experimental School.



above bird's eye view/鸟瞰图

right middle school photo/中学部实景图

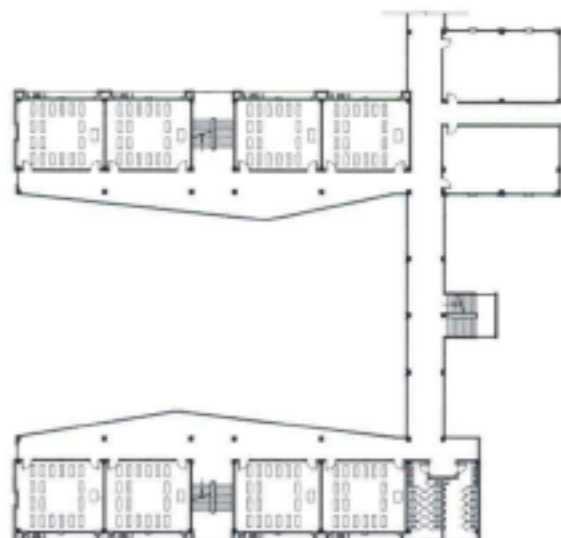
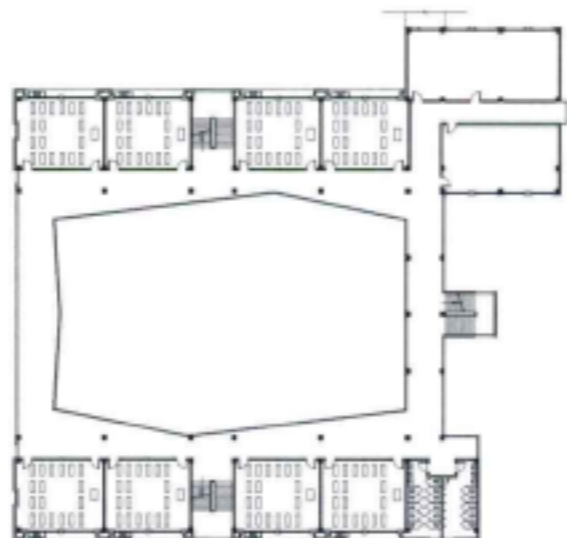
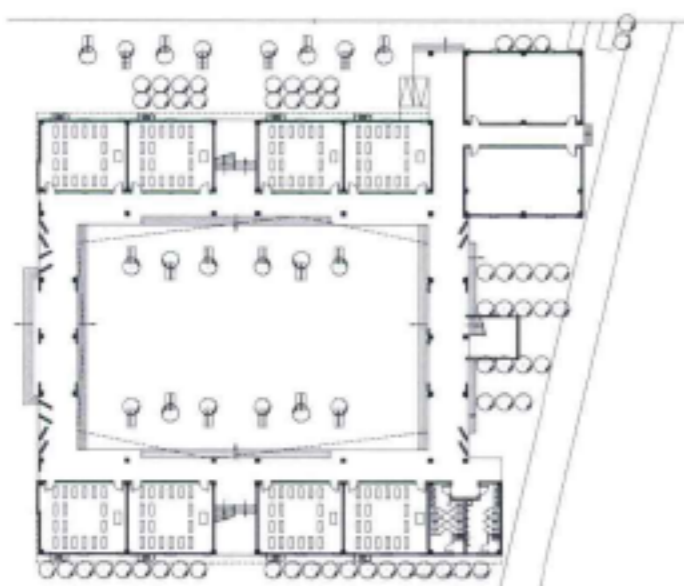




above primary school inner court photo/小学部内院实景图

below primary school first to third floor plans/小学部一至三层平面图

right primary school photo/小学部实景图





2