

Features 项目亮点

The design adopts the style of simplicity and classicism to show the nobility and high quality of the architecture. The overall layout adopts an open internal-commercial-streets arrangement to create a friendly and vivid commercial atmosphere.

本案在建筑设计上采用了简约古典风格，体现建筑自身的高贵品质感，布局上采用开放的商业内街模式，整体营造一种亲切、活泼的商业氛围。

Key Words 关键词

Greenland Jiashang International, Shanghai 上海绿地嘉尚国际

Simple and Classical 简约古典

Vertical Line 竖向线条

Open Layout 开放式布局

Urban Complex in CBD CBD 型城市综合体

Location: Shanghai, China
Developer: Greenland Group
Architectural Design: W&R Group
Area: 60,000 m²

项目地点: 中国上海市
开发商: 绿地集团
建筑设计: 水石国际
项目规模: 60 000 m²

» Overview

As commercial architectures, the project is composed of hotel-style offices building — the main tower building, commercial podium and underground garage. It is located in Jiading Nanmen, entrenched in Jiading CBD and circled by District Government, Customs House, Jiading Information Building etc. The zone is featured for its increasing solemn political atmosphere and rising-up upscale office buildings. Jiachuang International developed by Greenland and Jialing International are facing each other across the intersection between Huiyi Road and Yecheng Road. They are standing in Jiading Nanmen as an image of upscale twin towers. With a convenient traffic environment and superior nature landscape, it is self-evident to be a landmark in the future.

» 项目概况

本案为商业建筑，主塔楼为酒店式办公楼，附带商业裙房和地下车库。基地位于嘉定南门地块，踞守嘉定 CBD，区政府、海关大楼、嘉定信息大楼等政要机关环伺，高端写字楼陆续崛起，庄重严谨的行政氛围日渐浓厚。同样由绿地集团打造的嘉创国际为嘉领国际的姊妹楼，两者在沪宜公路与叶城路路口隔街对望，扼守嘉定南门，形成双子塔的高端形象，加上周边便利的交通条件以及得天独厚的自然景观，后期的标志性地位不言而喻。

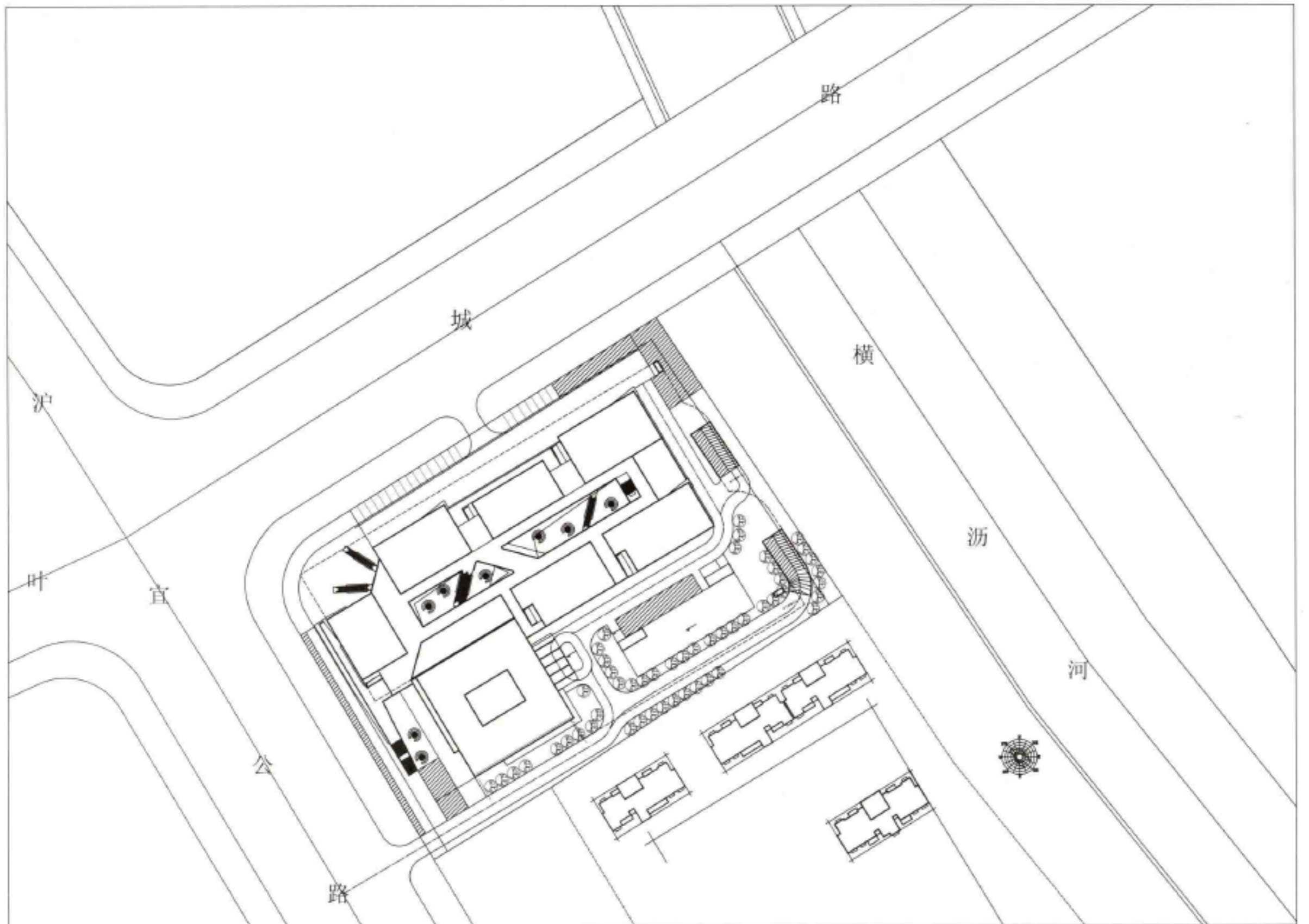
绿地嘉尚国际广场

绿地嘉尚国际广场

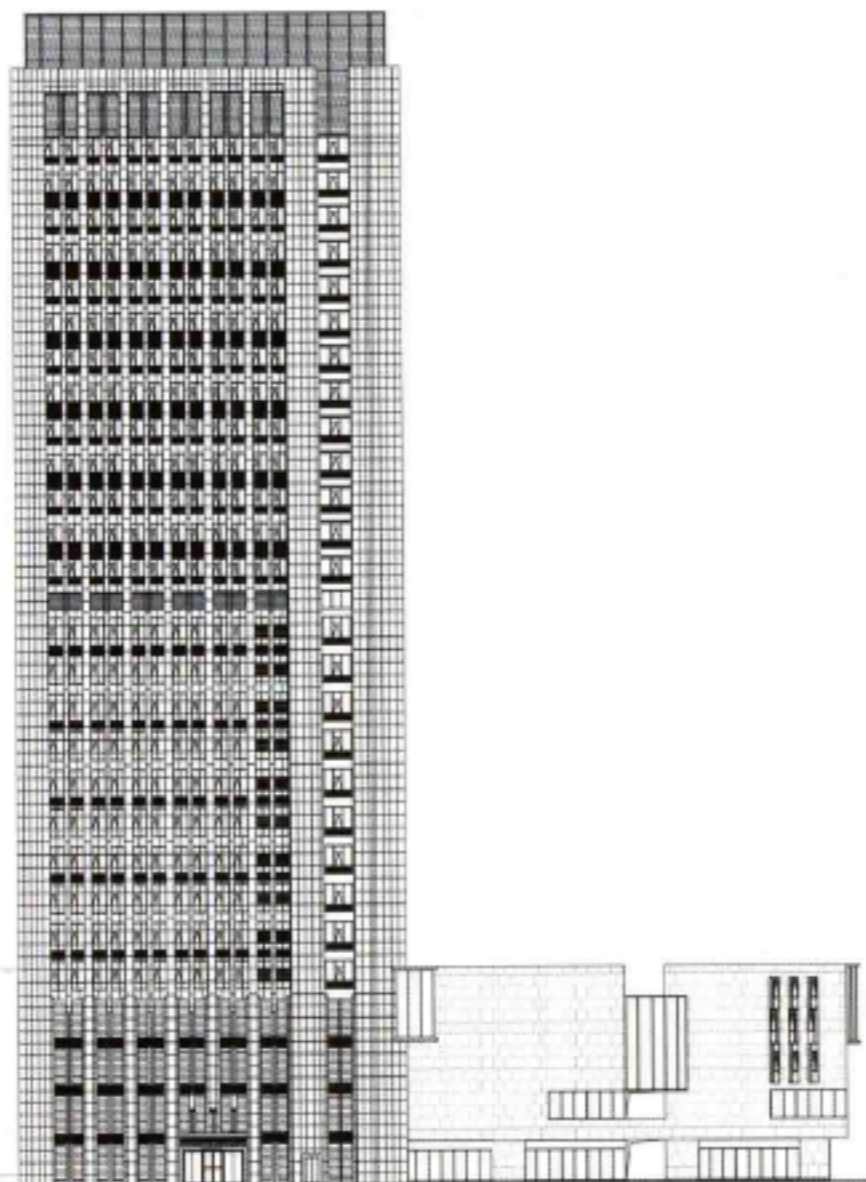
恒尊KTV

BANK OF CHINA

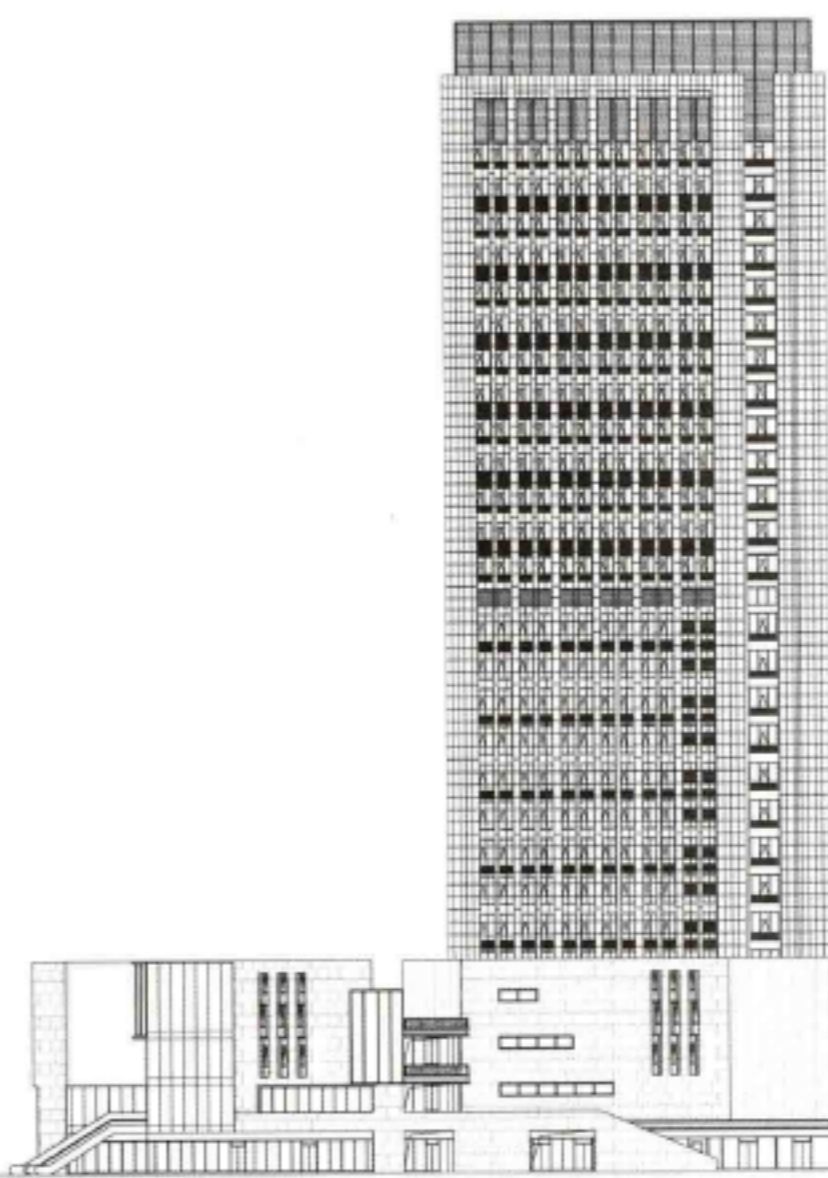




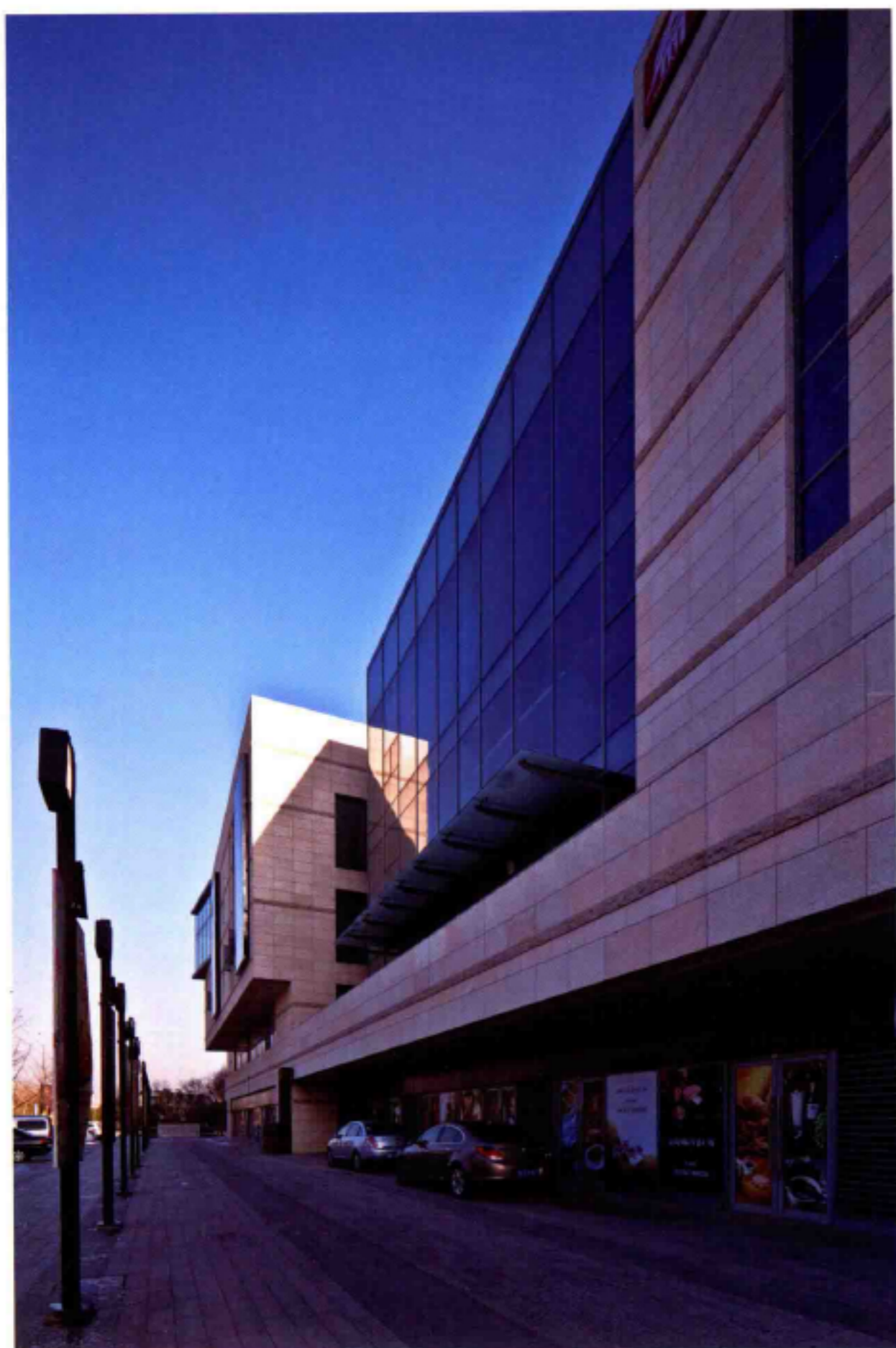
Site Plan 总平面图

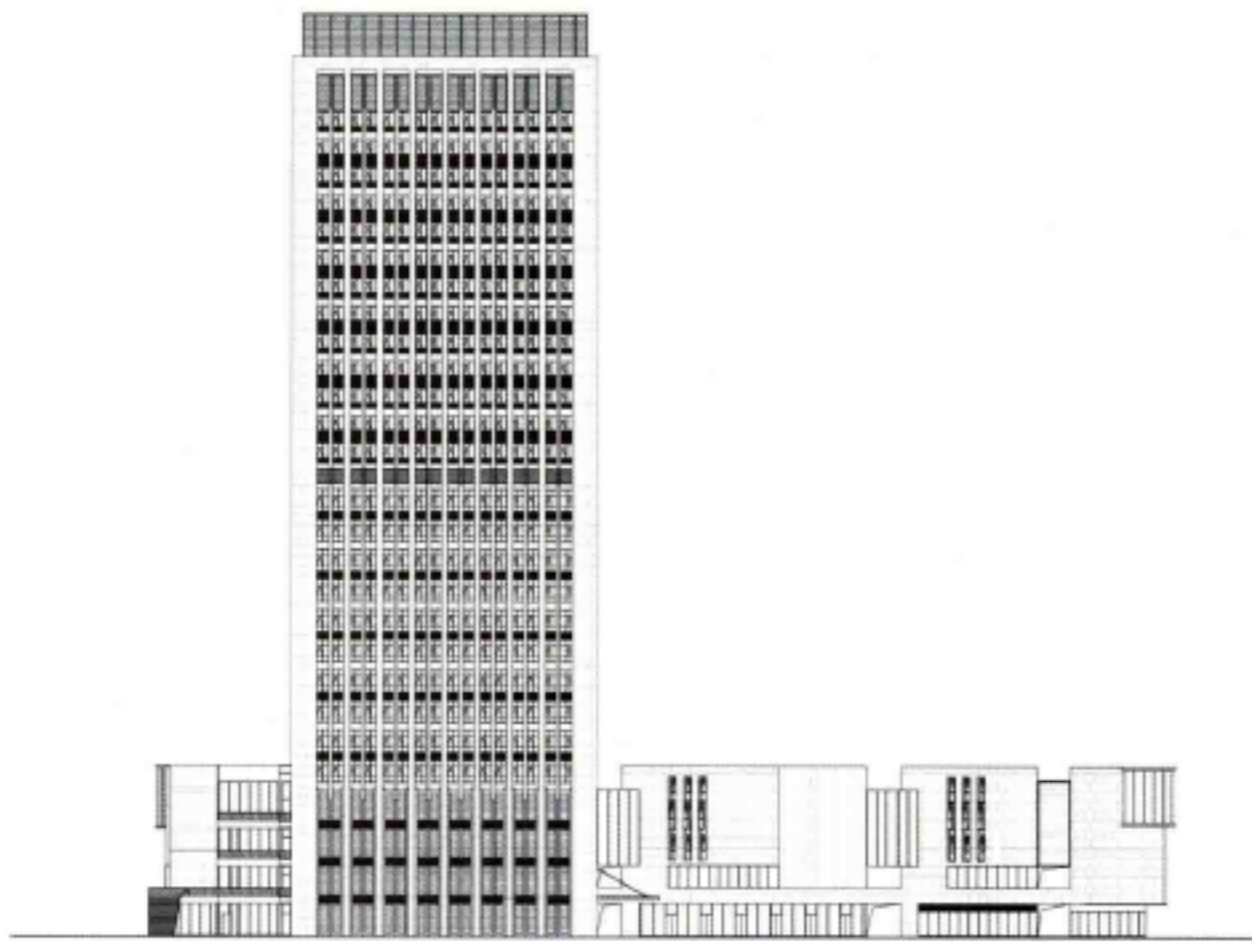


Elevation 1 立面图 1

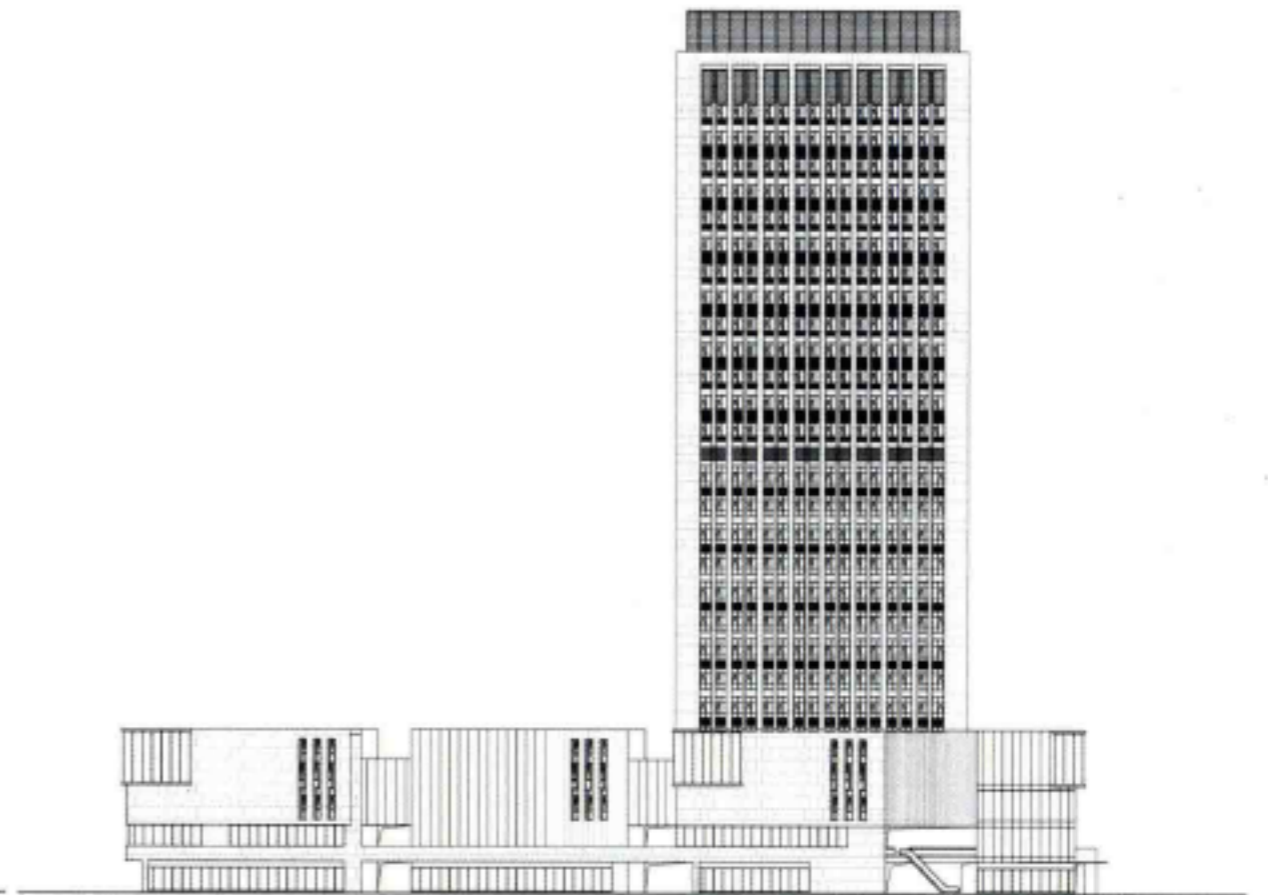


Elevation 2 立面图 2





Elevation 3 立面图 3



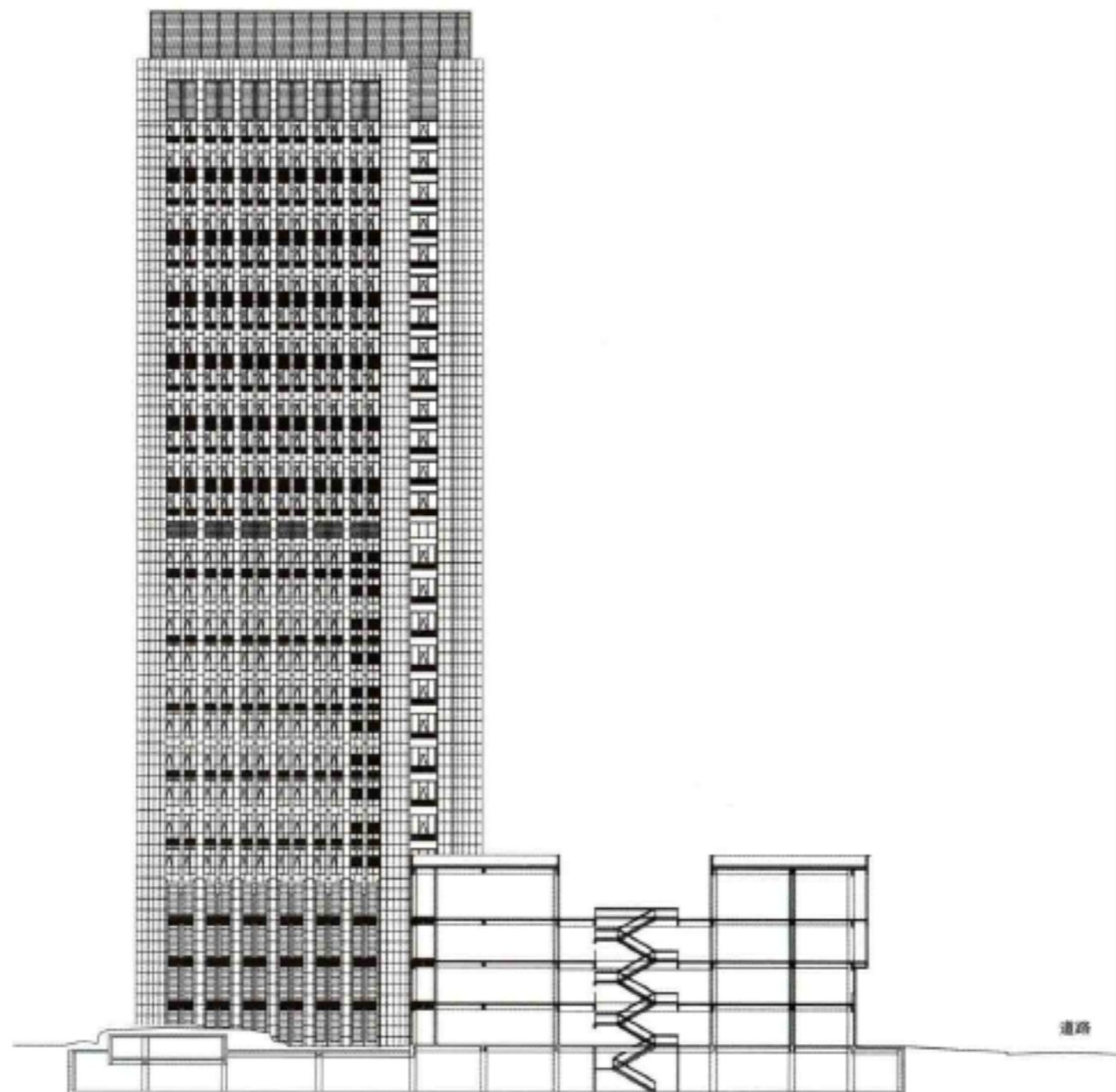
Elevation 4 立面图 4

» Architectural Design

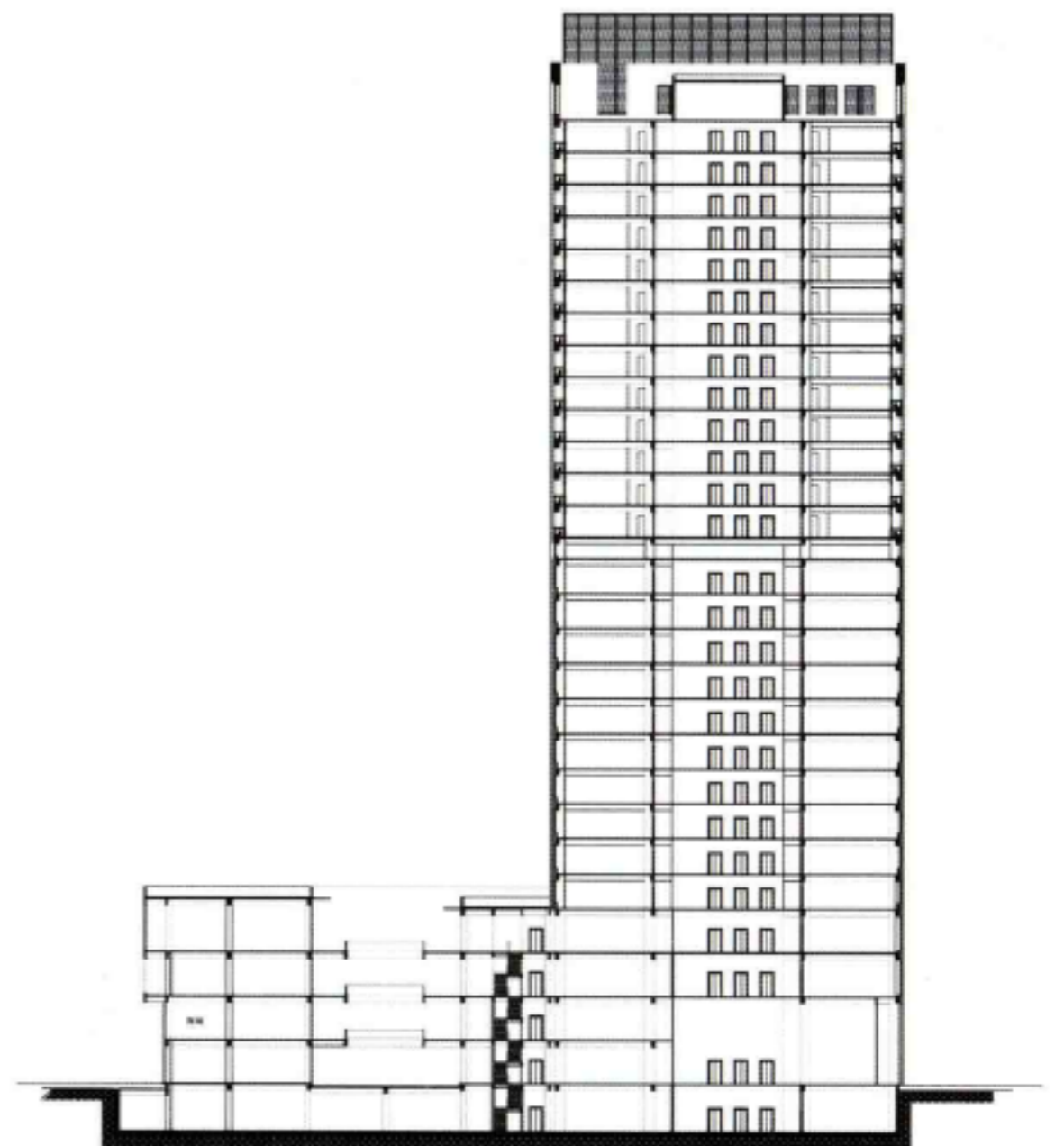
The design adopts the style of simplicity and classicism to manifest the long history of Jiading as a cultural ancient town. In addition, it shows the nobility and high-quality of the architecture and carries on the reserved main theme of Jaichuang International. The overall layout follows the commercial layout of the southern plot with an open internal-commercial-streets arrangement to create a friendly and vivid commercial atmosphere, in the meanwhile pays respect to the existing commercial-style surrounding. The podium presents a commercial space in which scenes are changed step by step.

The facade design of the commercial podium is an integration of reality and unreality. Through

the intersection between the great-area stones and the partial glass curtain wall, it creates a strong contradiction and the deep sense of sculpture, manifesting the quality as graceful, reserved and noble of upscale commerce. The commercial design of the inner space in the plot adopts various modes of settlement like plaza, corridor, atrium and courtyard etc. to make every shop interesting and fascinating with enough extensive surface. Part of the tower building adopts the artdeco vertical lines to maintain the solemn and elegant style of the main architecture, and generates the sense of upward extension. Its unique charming has played a favorable role in building the city card.



Sectional Drawing 1 剖面图 1



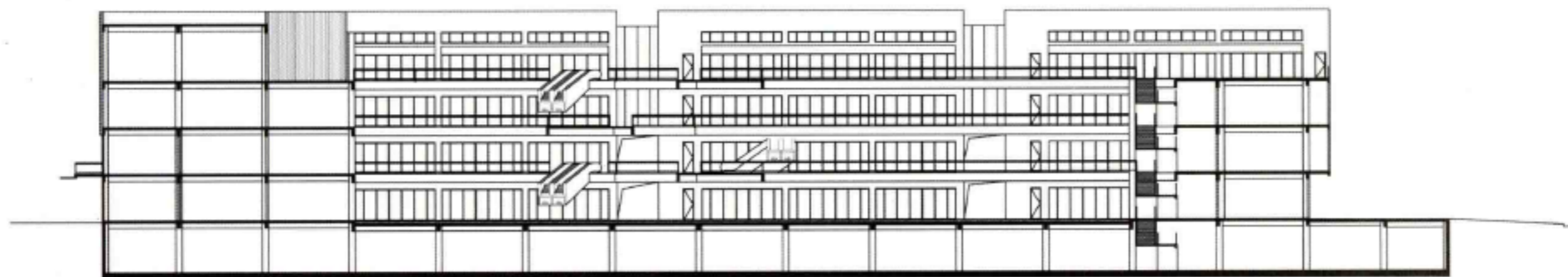
Sectional Drawing 2 剖面图 2



» 建筑设计

本案在建筑设计上采用了简约古典风格，既彰显了嘉定这一文化古镇的悠久历史感，又体现出建筑自身的高贵品质感，并延续了嘉创国际含蓄内敛的主旋律。总体布局顺应了南部块状商业的分布形态，采用了开放式商业内街模式，在尊重地块周边原有商业风貌的同时，营造出一种亲切、活泼的商业氛围。建筑裙房部分以灵活多变的设计语言，丰富时尚的形态变化，营造出一步一景、步移景异的商业空间。

在商业裙房的外立面处理上，运用了虚实结合的设计手法，即大面积石材所体现的“实”和部分玻璃幕墙所体现的“虚”相互穿插，使之形成强烈的对比，并具有浑厚的雕塑感，彰显大气婉约的内敛气质和高端商业的尊贵品质。本地块的商业设计在内庭中营造出广场、回廊、中庭、院落等多种聚落模式，使每一间商铺都有充分的延展面和引人入胜的趣味空间。塔楼部分采用artdeco的竖向线条，以此来保持主建筑庄重典雅的风格，并提升延展向上的感觉，所形成的独特的韵味对打造城市名片具有良好的推动作用。



Sectional Drawing 3 剖面图 3



