

Site plan  
總平面

Structural engineer \Concept structural engineer: Kyoto Institute of Technology  
 General contractor: CA Construction Co., Ltd.  
 Morisako laboratory+momoma/Kiyotaka Morisako  
 Photographer: Hiroshi Ueda  
 Function: Office  
 Design term: Jan.2001 - Sep. 2002  
 Building term: Dec.2002 - Feb.2004  
 Location: Seoul, Korea  
 Total floor area: 2 021.2 m<sup>2</sup>  
 Site area: 1 322.3 m<sup>2</sup>  
 Building area: 583.7 m<sup>2</sup>  
 Structure: Four-storied two basement, steel-frame construction

結構工程師\概念結構工程師: 東京技術研究院  
 總承攬人: CA建築有限公司, Morisako laboratory  
 +momoma / Kiyotaka Morisako  
 攝影師: Hiroshi Ueda  
 功能: 寫字樓  
 設計工期: 2001年1月-2002年9月  
 建築工期: 2002年12月-2004年02月  
 位置: 韓國首爾  
 房屋總面積: 2 021.2平方米  
 場地面積: 1 322.3平方米  
 建築面積: 583.7平方米  
 結構: 4層帶兩個地下室  
 鋼架結構

## Paju SW Office

### Paju SW 辦事處

**Design company:** Waro Kishi + K.ASSOCIATES/Architects

**Co-Architects:** Kim Young-Sub + Kunehook Moonwha Architect Associates

設計單位: Waro Kishi + K.ASSOCIATES/建築公司

合作建築公司: Kim Young-Sub + Kunehook Moonwha建築協會

This project is for an office building in a new research park, currently under planning for a location near an airport, about an hour from central Seoul. The site is in an area of lush greenery, backed by mountains, and has a river running before it.

Considering the best response to such an environment, The designer decided to use glass of three different kinds of transparency-transparent, frosted, and stripe-print-for screening the interior space from the exterior. Applying these materials enabled the designer to manipulate the visual relationship between the interior and exterior and, at the same time, avoid an architecture that imposed itself harshly on the surroundings.

The designer employed staggered floor levels for the interior spatial composition. Inserting a staircase in a vertical void, topped by a skylight, and placing a ramp along an exterior glass curtain wall, the designer connected the floors with a gentle, spiraling path of movement. This open design engenders a perception of the office building's interior as a single space.

該工程是對新科技園辦事處的建造，規劃在鄰近機場的位置，離漢城大約一小時的路程。基地周圍一片蔥翠，背靠山巒，面臨小溪。

考慮到能夠最好地利用周圍的環境，設計者決定使用三種不同透明度的玻璃——透明、磨砂、條文印花（用於將內部空間從外部屏蔽）。使用這些材料，可以使設計者對內部和外部的可視關係進行控制。同時，可以避免建築過分地暴露於周圍的環境中。

在內部空間組合上，設計者使用交錯的樓層。在垂直的空間，設計者插入小樓梯，頂部開小天窗，沿着內部玻璃窗簾牆上放置一舷梯。舷梯和地板用一種雅致的旋梯連接。這種敞開的設計營造了辦事處大樓是一個獨立空間的感覺。









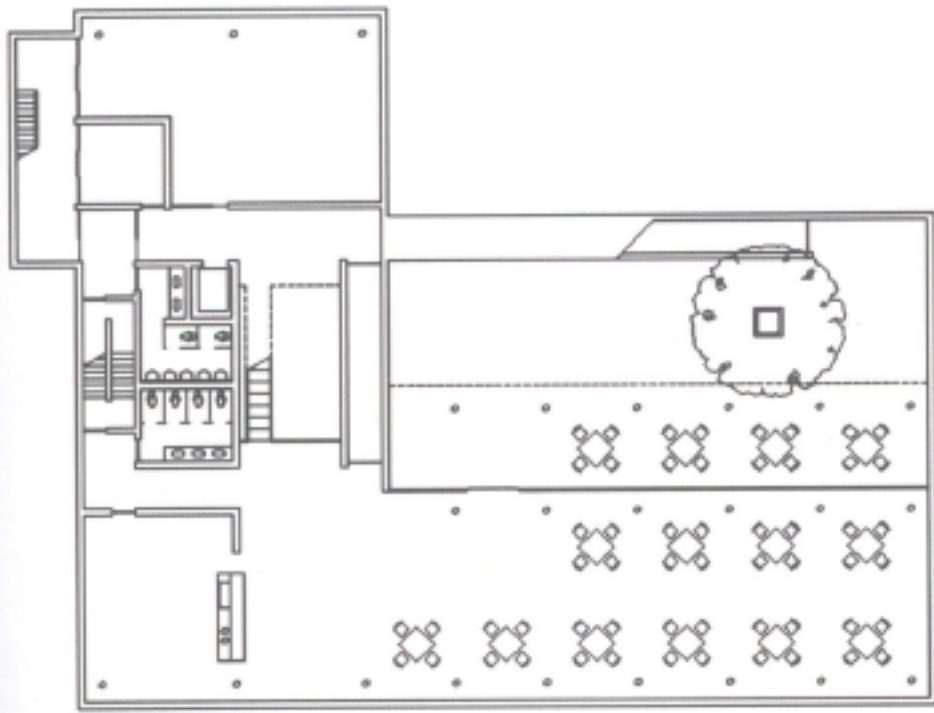




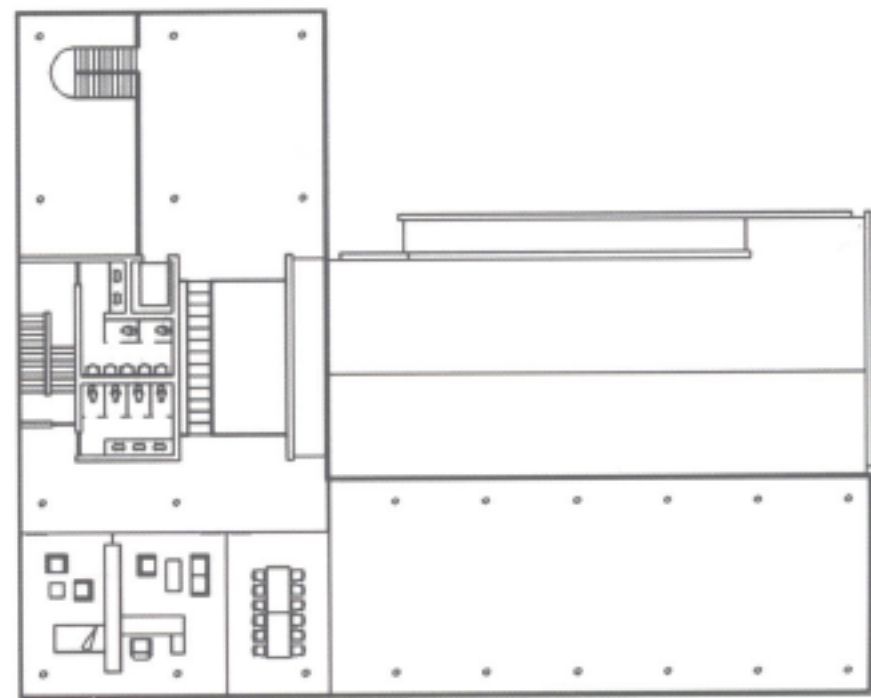




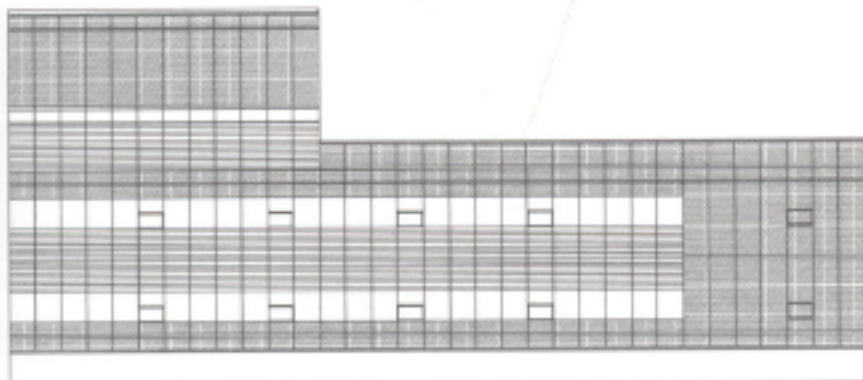




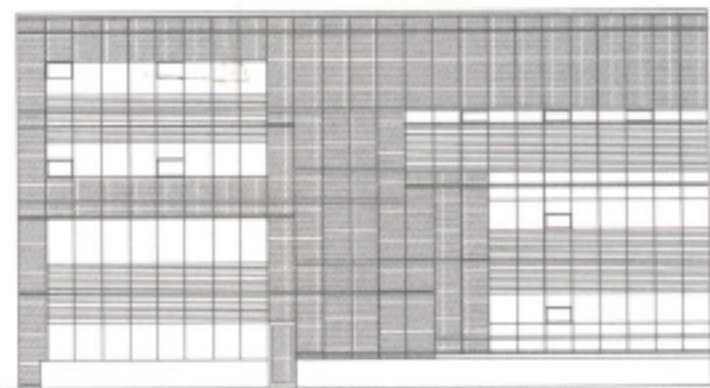
Basement floor plan  
地下層平面圖



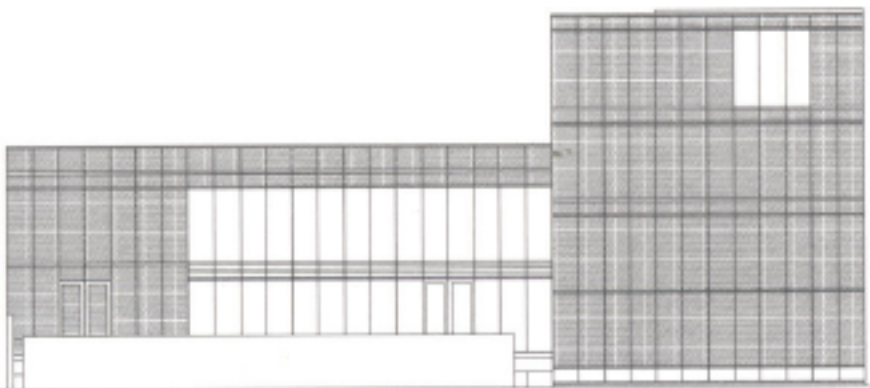
2nd floor plan  
二層平面圖



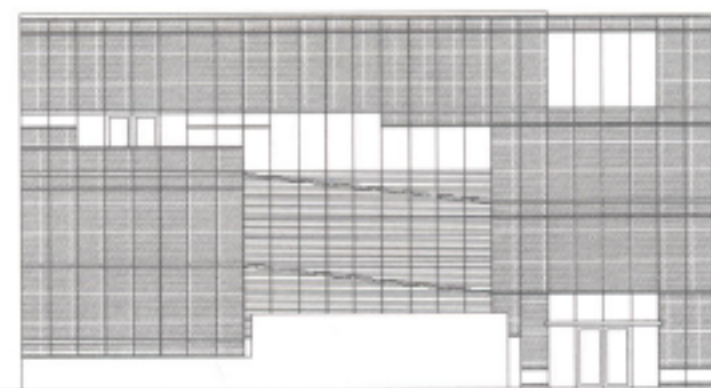
East elevation  
東立面圖



South elevation  
南立面圖



West elevation  
西立面圖



North elevation  
北立面圖



Section-A  
剖面-A