

# SHANGHAI GREENLAND METRO-PARK PLAZA

## 上海绿地公园广场

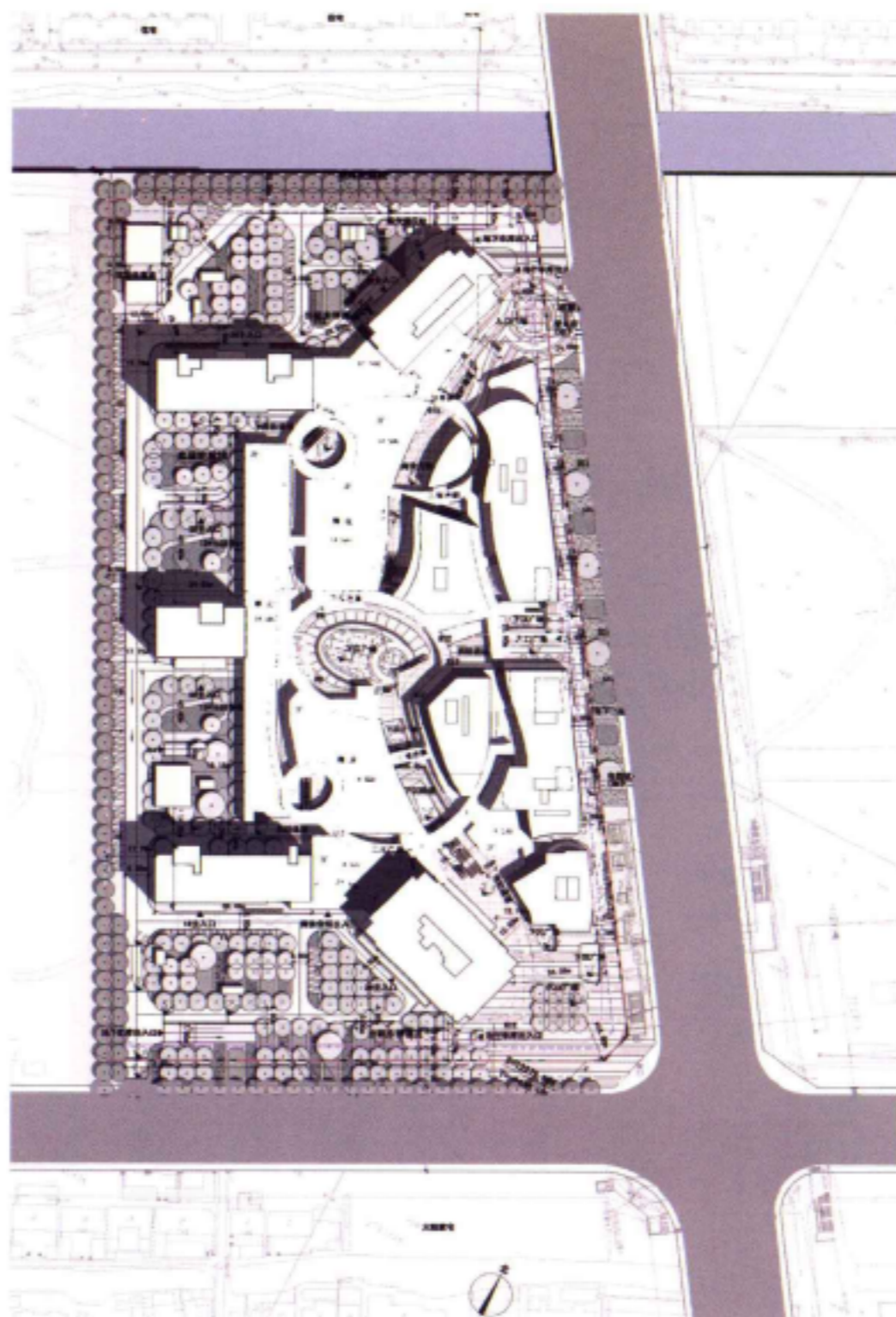
用地面积	建筑面积	设计时间	建筑类型
58 618平方米	22 2969平方米	2009年9月至今	商业+办公

绿地公园广场为地铁上盖物业，位于上海市宝山区顾村镇，向南可环顾整个顾村公园。地铁7号线陆翔路站直接连接到地块东南角，并与地下商业连通。本项目总用地面积为58618平方米。用地性质为商业及办公综合区，主要由5幢高层办公楼及3~4层商业、地下商业及大型地下车库构成。

沿陆翔路规划为大型精品购物中心。设计“十字”及“环路”相结合的流线模式，既有效消化了地块进深，又提供了可分可合的多种店铺组合可能，创造出清晰而又变化多样的购物体验空间。中心处设计一个椭圆形的露天下沉广场，可举办各类展览、节日庆典和其他商业活动。公园广场将成为上海宝山顾村公园板块集大型主题购物、餐饮、娱乐、休闲、文化等一站式综合性“游憩型娱乐休闲购物中心”。

Metro-Park Plaza, located in Gucun Town, Baoshan District, Shanghai City, is built over a subway line and overlooks the whole Gucun Park at south. Luxiang Station of Subway Line 7 is directly connected with the southeast corner of the plot and the underground commercial space. This project, covering a total area of 58,618m<sup>2</sup>, is a commercial and office complex and mainly consists of five high-rise office buildings, three to four commercial floors and underground commercial floor and large underground parking lot.

Large boutique shopping center is planned along the Luxiang Road. Integration of "cross" and "ring" roads not only effectively digests the depth of project site, but also provides flexible and diversified stores and creates clear and various spaces for shopping experiences. An elliptic open sunk square is designed at the central area, which could accommodate different exhibitions, festival celebrations and other commercial activities. The park plaza will become a one-stop "leisure and entertainment shopping center" integrating large theme shopping, catering, entertainment, leisure and culture in Gucun Park of Baoshan District, Shanghai.







left site plan/总平面图

above bird's eye view/鸟瞰效果图









böhme

LOUIS VUITTON  
Flanerie

Kumkang

KENNETH COLE  
new

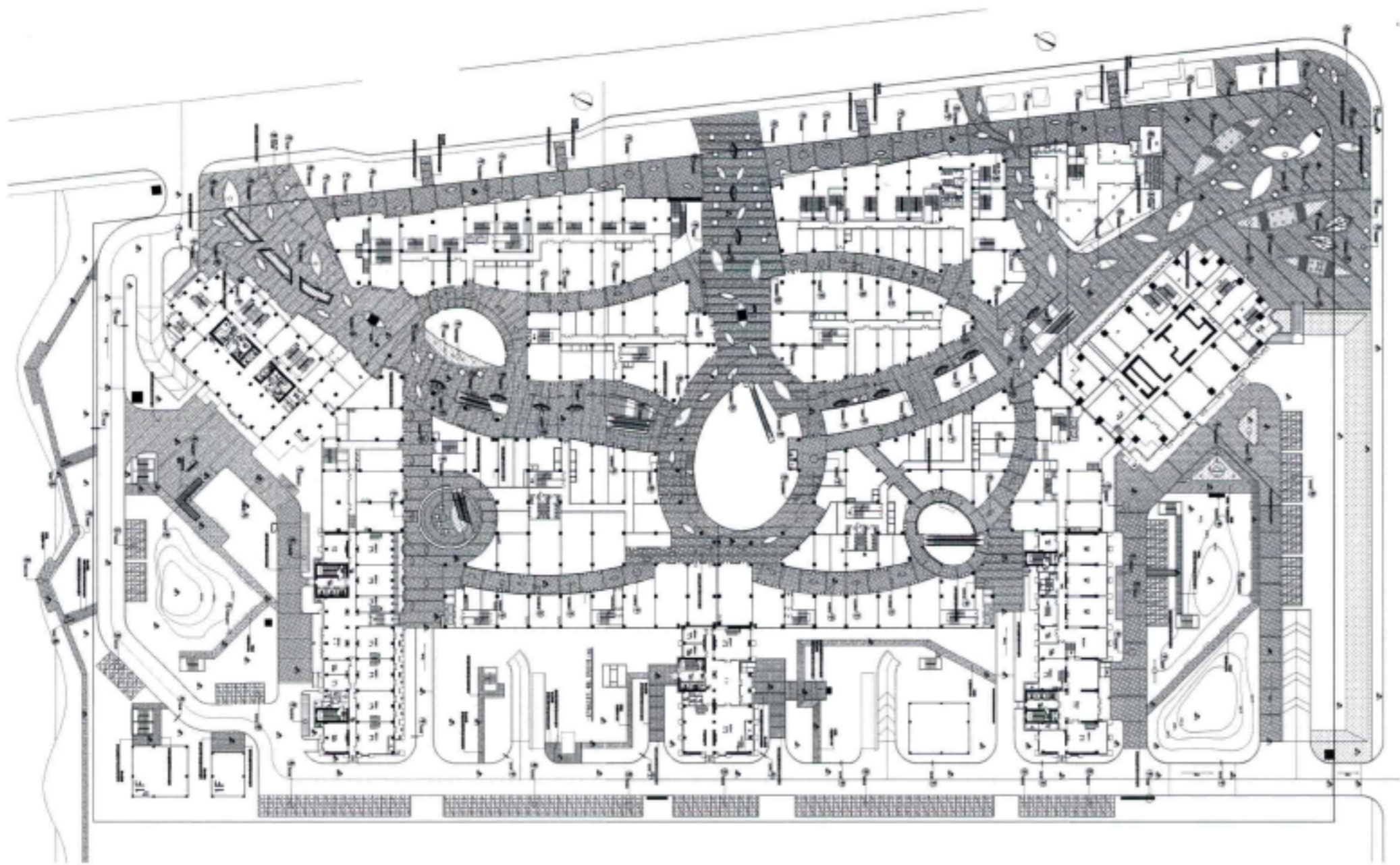
VERSACE  
JEANS COUTURE

Goshen

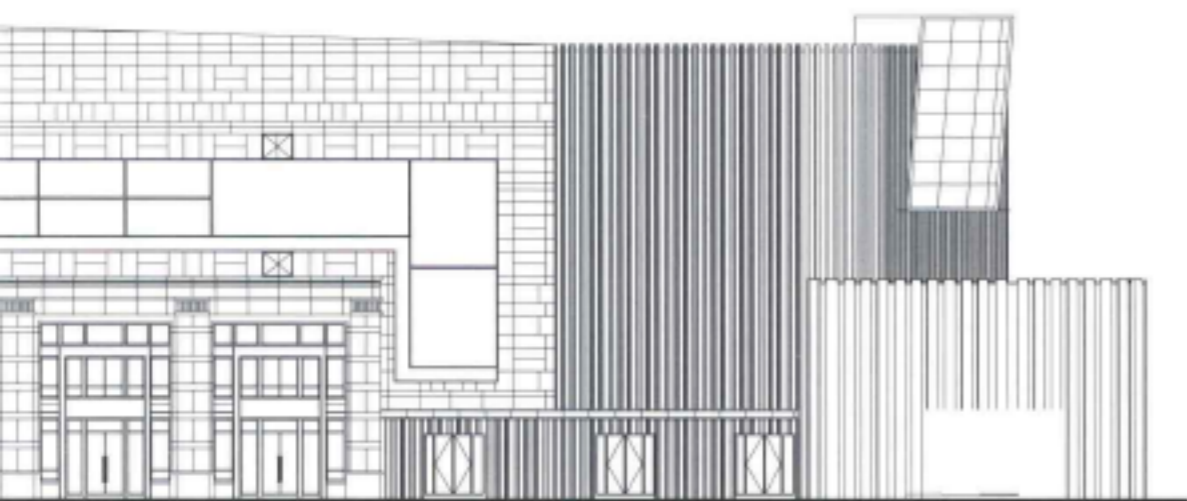
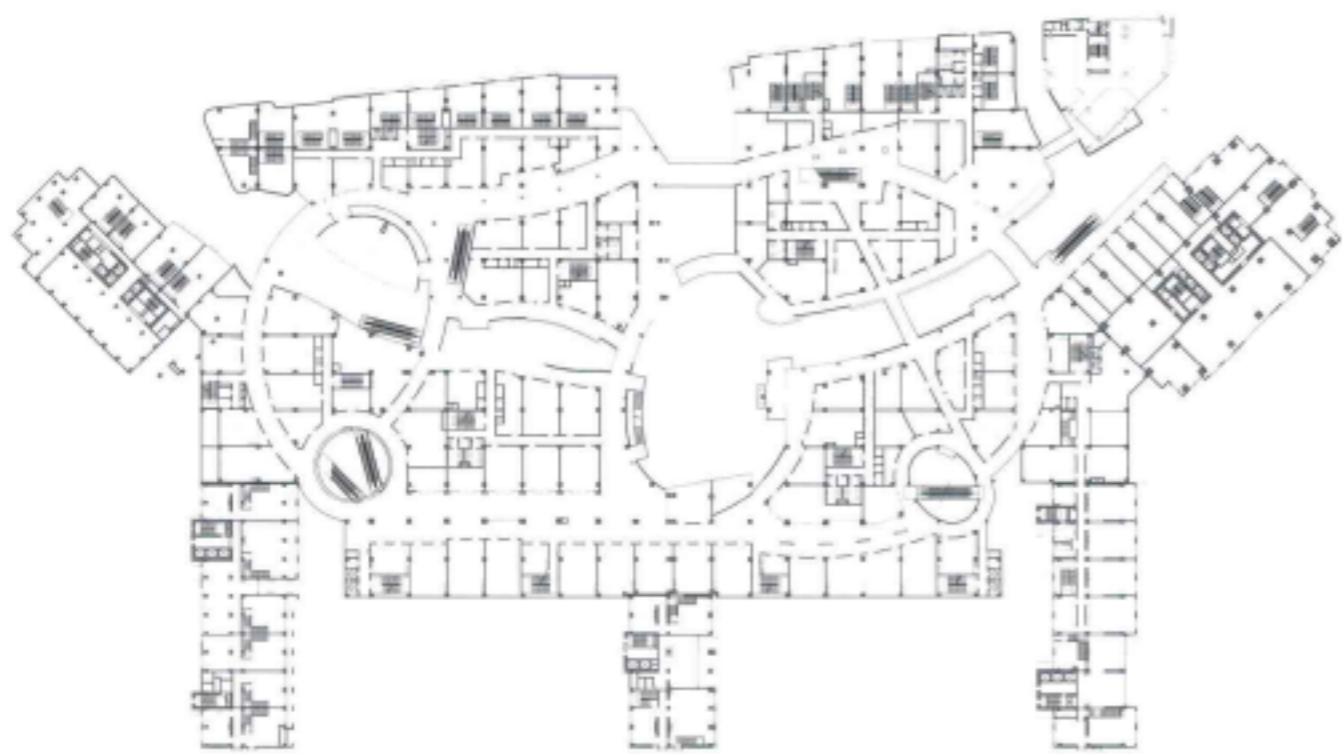
BELLVILLES











top left business plan/商业平面图

bottom left commercial street facades/商业沿街立面图

above local architectural photo/建筑局部实景图