

# BEIJING GREENLAND CENTRAL PLAZA

## 北京绿地中央广场

用地面积	建筑面积	设计时间	建筑类型
40 086平方米	224 202平方米	2009年	商业办公

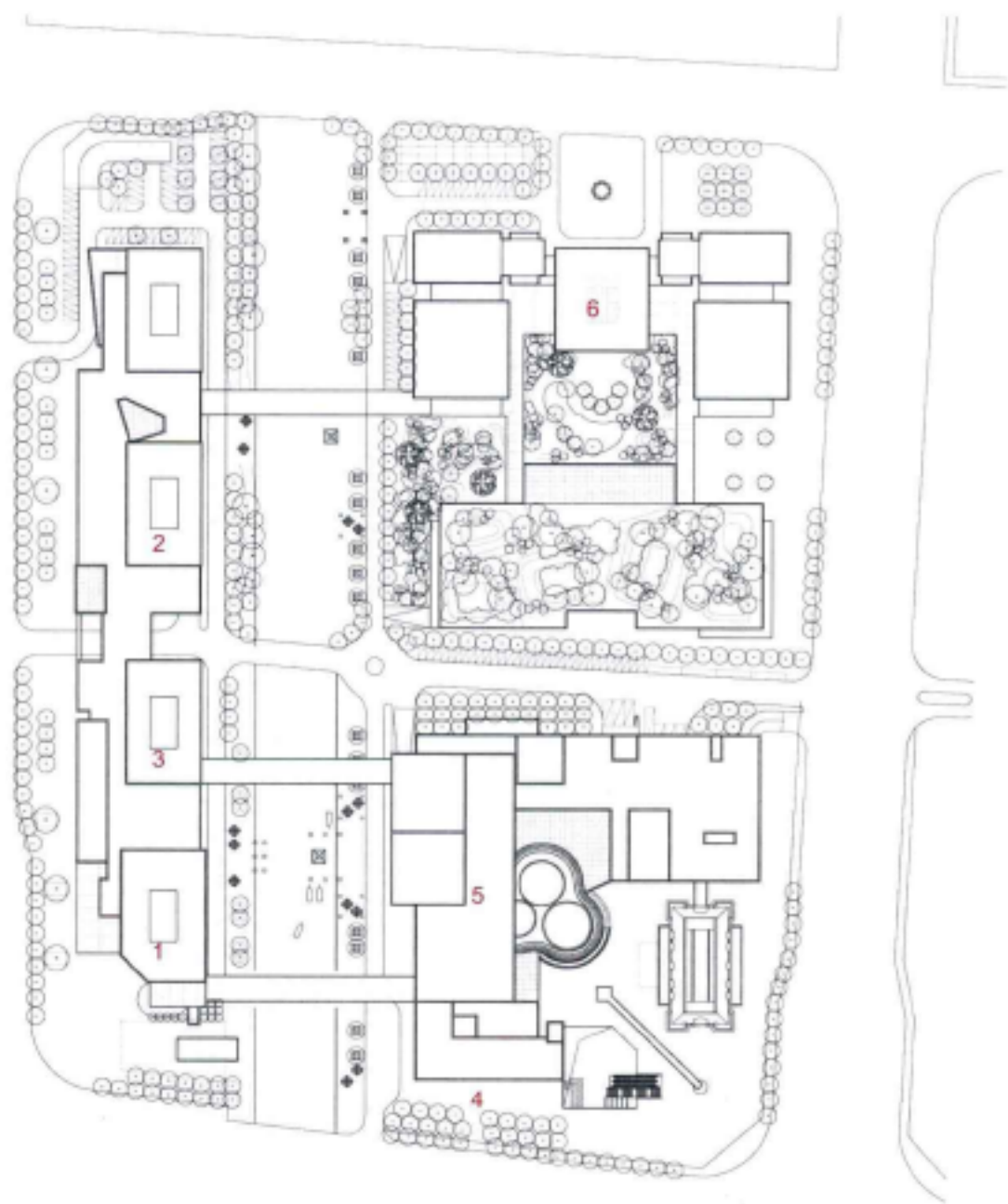
北京绿地中央广场及绿地缤纷城位于北京市大兴区，紧邻五环，距离市中心15千米左右，交通便捷；地下通道与北京地铁4号线延伸段相连。融合了百货、精品店、大型卖场、影院、娱乐、餐饮等各种时尚休闲的功能，满足了大兴区经济发展和市民购物休闲活动的需求。

本项目的建筑设计充分考虑了人在室外公共活动空间的直观视觉感受和空间尺度体验，营造了宜人的商业体验环境。内凹的广场、下沉的广场等为城市提供了难得的多层次的可停留空间，成为鼓励各种户外活动的场所。建筑群体采用古典式与现代风格并置的手法，形成强烈的视觉冲击感，给人过目难忘的场所感受。

Beijing Greenland Central Plaza and Beijing Greenland Funny City, located in Daxing District of Beijing City and enjoying convenient traffic, are adjacent to the 5th ring road and about 15km from the urban center; underground passage is connected with the extended segment of Beijing Subway Line 4. The project is composed of various fashionable functions, such as shopping mall, boutique, large-scale market, cinema, entertainment and restaurant, etc., so as to satisfy the economic development of the district and citizen's demand for shopping and entertainment.

Architectural design of this project gives full consideration to direct visual feeling and spatial experience in public space, successfully creating appropriate environment for commercial experiences. Concave square and sunk plazas provide rare diversified urban public spaces and encourage various outdoor activities. Buildings integrate classic and modern styles to form an intensive visual impact and to give people memorable spatial feeling.

1. quasi grade-A office/准甲办公
2. LOFT office/LOFT办公
3. SOHO office/SOHO办公
4. apartment-style office/公寓式办公
5. shopping mall/大型商业
6. hotels and business facilities/酒店及商务设施







left bird's eye view/鸟瞰图  
above site plan/总平面图

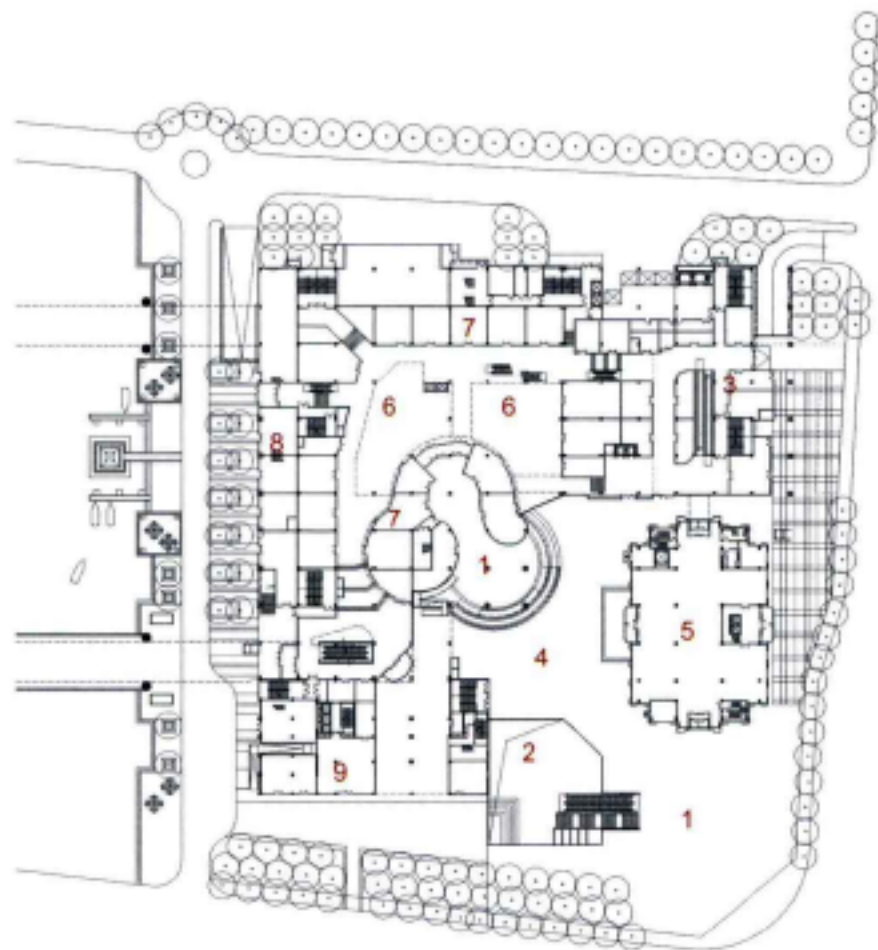


below photo/实景图

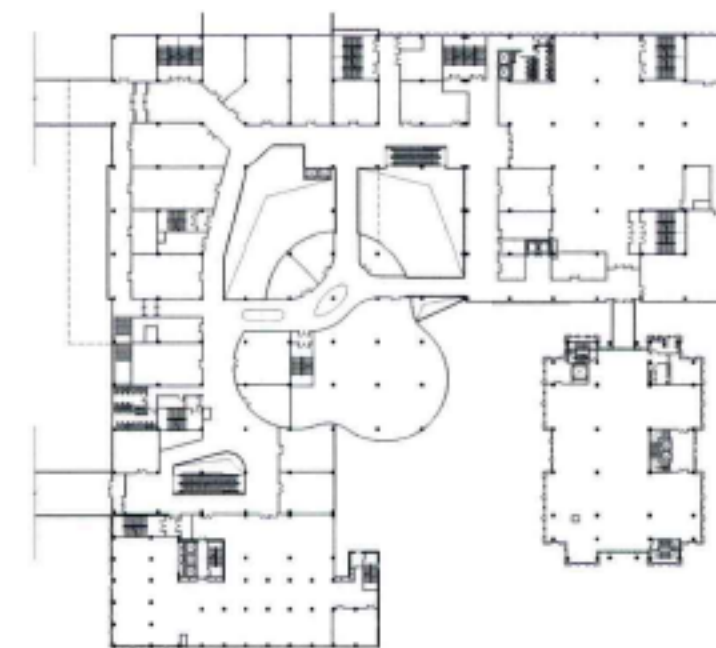
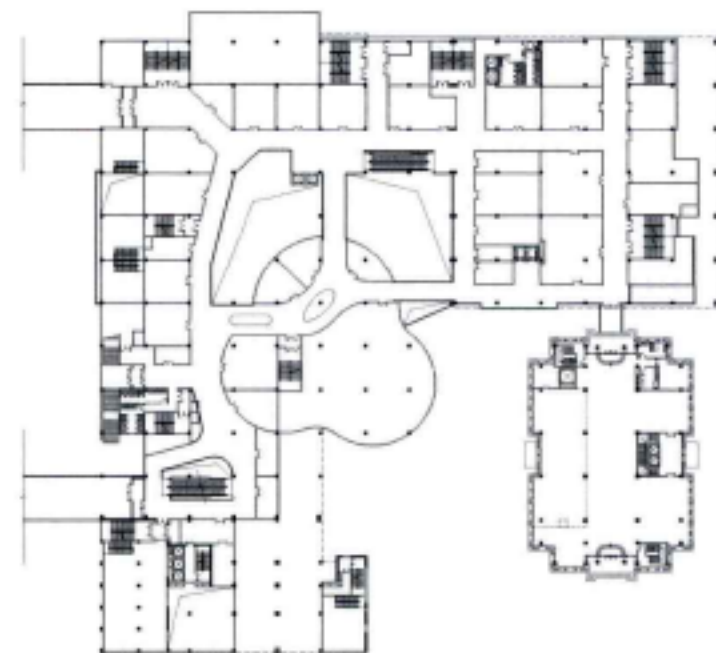
right standard floor plans/标准楼层平面图







1. commercial plaza/商业广场
2. sunk plaza/下沉广场
3. supermarket/大卖场
4. main entrance/商业主入口
5. clubhouse/俱乐部会所
6. atrium/中庭
7. shop/店铺
8. bar & cafe/酒吧茶座
9. lobby/公寓办公大堂









left and right photos and section diagram/实景图 and 局部详图

