



Looking towards the elevation facing the scramble junction 从繁忙的交叉路口看建筑

EX

The site of EX faces the front of a four-way crosswalk with heavy pedestrian traffic. The goal of the project was to design a core facility that could change the scenery of the Chiba station area that is suffering from economic decay. The solution to this problem was to design a building with a five-storey glass atrium in the front so the various activities inside would be seen from the outside. Then by having an atrium full of movement, the architects aimed to let the context and the atrium have a stronger connection to each other.

The main circulation for the building is gathered at the front atrium facing the existing shopping district. The atrium then is made with a transparent curtain wall so it visually opens up to the surrounding district. Besides, the escalator facing the atrium is cantilevered to make the space become open. The building's exterior is then clad with metal panels that vary in width to give the building a rhythm and avoids the monotonous surface.

The name of the building is "EX" which is a prefix meaning "out of". This is to emphasise on the designer's design concept: wide range of information and activities are sent out from this building, making the whole community a more attractive place.



The atrium becomes increasingly transparent at night as it is lit up 夜晚的灯光让建筑看上去更通透

EX商场

EX商场朝向一个交通繁忙的十字路口，项目的主要目标是设计一个能够改变千叶市车站区萧条的经济状况的商业设施。商场正面是一座五层高的透明中庭，因此，外面过往的行人都可以看到商场内部的活动，外部环境和中庭被紧密地联系在了一起。

建筑的主楼梯全部设在面朝商业区的中庭里。中庭透明玻璃幕墙从视觉上让商场向周边的区域开放。此外，朝向中庭的自动扶梯采用了悬臂结构，让空间看起来更开阔。建筑的外部包裹着不同宽度的金属板，形成了一种韵律感，避免了建筑表面过于单一。

建筑被命名为“EX”，在英文中意为“向外”，强调了设计师的设计理念，即源源不断的信息和活动从这座建筑向外涌出，为社区增添了诱人的活力。



外部细节 Close-up of the exterior

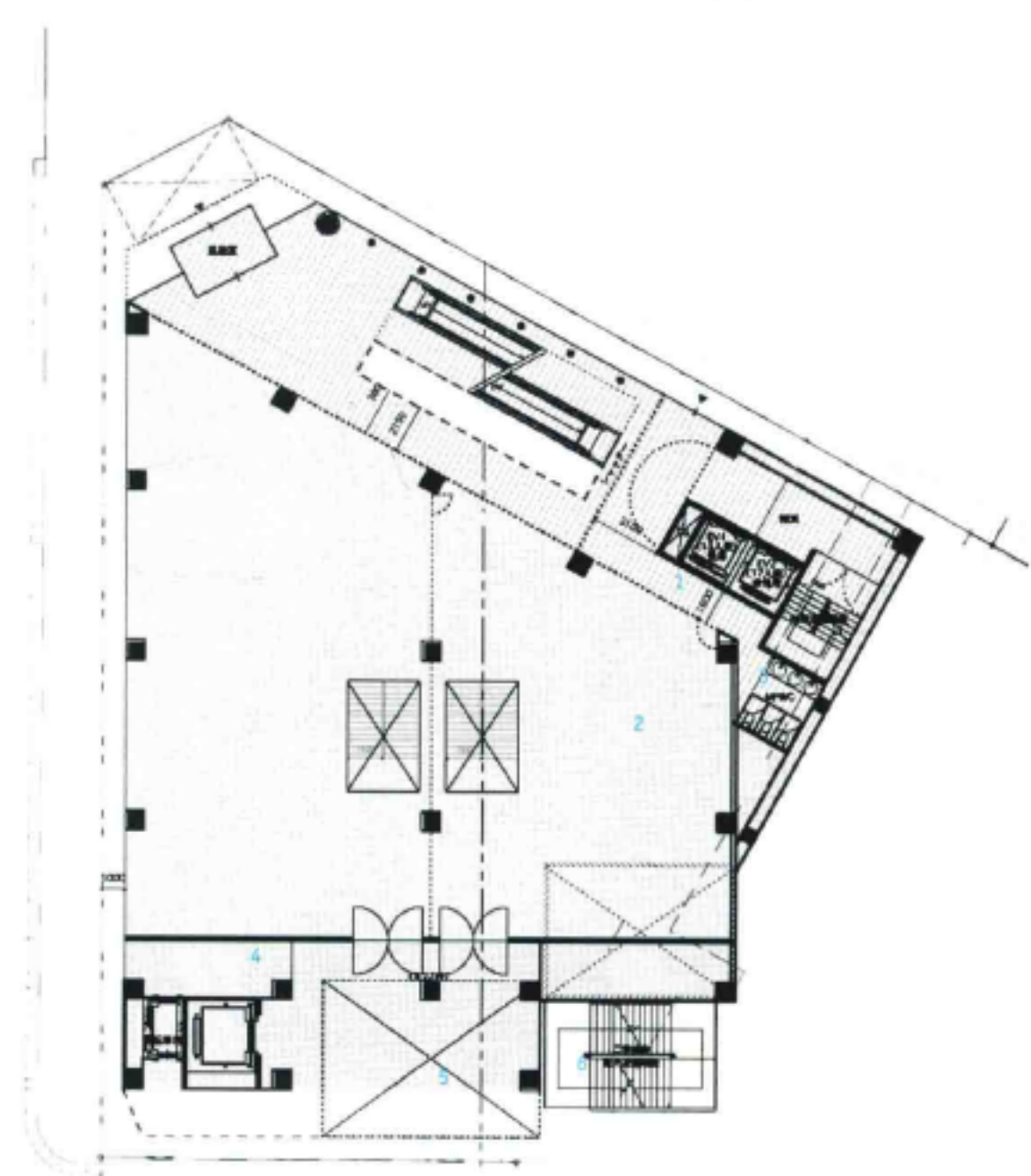


外墙上的印花使建筑更具活力 The organic print on the building surface adds playfulness to the architecture



View from the main ground level entrance looking at the cantilevered floors

从一楼看上方的悬臂楼层



1. 电梯
 2. 出租商铺
 3. 洗手间
 4. 中心监控室
 5. 垃圾回收区
 6. 逃生楼梯
1. lift
 2. tenant
 3. WC
 4. central monitor room
 5. garbage place
 6. escape staircase

Photo: Kohichi Torimura

Architect: SATOH Hirotsuka Architects

Commercial

Completion Date: 2008