

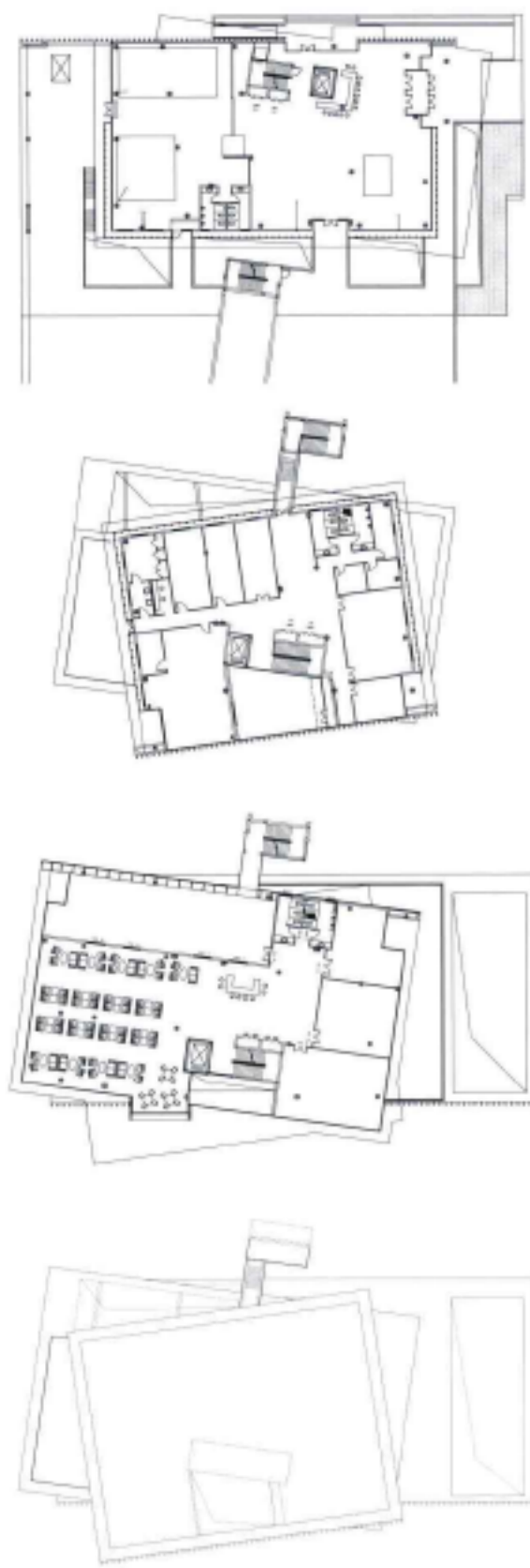
# SALES BUILDING OF BEIJING AIR CITY

## 北京翼之城售楼处

用地面积	建筑面积	设计时间	建筑类型
约3 000平方米	约2 000平方米	2009年12月	售楼处

北京翼之城售楼处位于首都国际机场东南侧，总建筑面积约2,000平方米。建筑形态轻盈现代，富有冲击力，以大尺度的悬挑和扭转形了极富张力的造型。同时设计充分尊重北京的历史传统，在设计之初把对北京四合院的钟情融合到设计之中，在建筑设计中将“院子”的概念贯彻始终，成为统一全局的元素。建筑师将每一层理解为一个场所，传统院落形式加以现代元素的重构，在每一层都塑造了具有传统意味的现代庭院空间。每层院子都有其独特的主题、鲜明的个性。穿梭其中时心理会产生戏剧性的变化，进而对售楼产生积极的影响。建筑在大量使用现代建筑常用的铝合金型材、穿孔钢板、玻璃的同时，又添加了黑与白、明与暗的对比，凸显其沉稳一面。整体建筑前卫现代又不失传统韵味、彰显个性又不失成熟稳重。

Sales Building of Beijing Air City is located at the southeast of Beijing Capital International Airport and covers a total building area of about 2,000m<sup>2</sup>. The building has vigorous and modern features and produces strong visual impact, utilizing large-scale cantilever and torsion to form an unique appearance. Meanwhile, the design gives full respect to the historical culture of Beijing. Features of Beijing courtyard building are infused into the architectural design and "courtyard" concept penetrates through the whole design process and becomes an element unifying the general layout. Architects design each floor into a location which consists of traditional courtyard and modern elements. Therefore, modern courtyard with traditional culture is created on each floor. Moreover, unique theme and identified features are designed for each courtyard. People's mind may change dramatically while walking through the courtyard, as it actively promotes people's willing to buy one. Besides ordinary building materials, such as aluminium alloy products, perforated steel plate and glass, the building also adds obvious contrast between black and white, as well as light and dark, showing the solemn appearance of building. Overall appearance of the building realizes a perfect balance between modern and traditional culture, personality and solemnity.



right plans/各层平面图  
far right exterior view/外景图









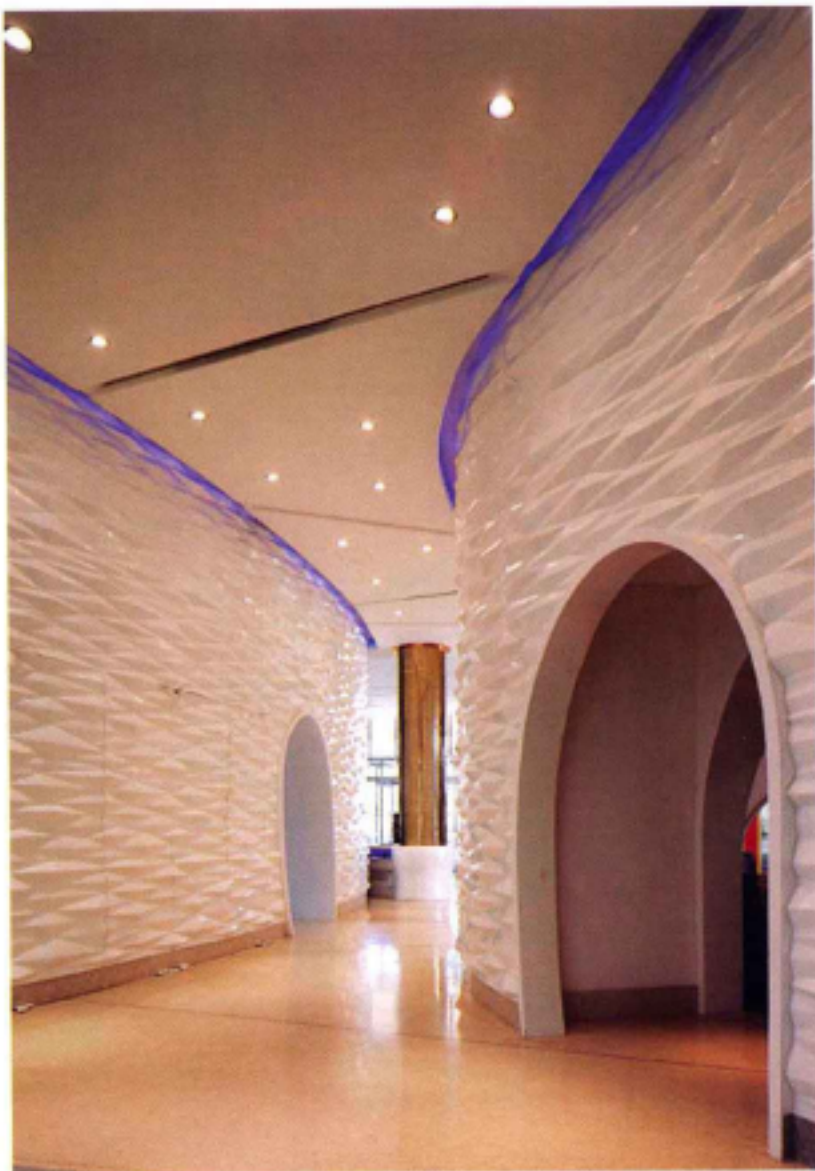
left and right exterior spaces photos/外部空间实景图











left interior spaces photos/内部空间实景图  
right node section/节点详图



