



Site plan
總平面圖

Structural Engineer: Robert Silman Associates
 MEP Engineer: Loring Consulting Engineers
 Acoustics: Cerami & Associates
 Graphic Design: Peter Scherer of H. Plus Inc.
 Landscape Architects: Quennell Rothschild & Partners, LLP
 Photographer: Jonathan Wallen & Elliot Kaufman
 Function: Offices
 Completed: May 2006
 Size: 2 139 square feet + 260.4 square foot cellar

結構工程師: Robert Silman Associates
 機電設備工程師: 資深諮詢工程師
 音響: Cerami & Associates
 平面設計: Peter Scherer of H. Plus公司
 景觀設計師: LLP建築師Quennell Rothschild & Partners
 攝影師: Jonathan Wallen 和 Elliot Kaufman
 功能: 寫字樓
 完成日期: 2006年5月
 規模: 2 139平方米+260.4平方米地下室

The Andrew W. Mellon Foundation

Andrew W. Mellon 基金會總部辦公樓

Design company: Platt Byard Dovell White Architects LLP

Architects: Ray H. Dovell AIA
 Charles A. Platt, FAIA
 Anne Holford-Smith, AIA
 Kathryn Crowley, AIA

設計單位: Platt Byard Dovell White Architects LLP

設計師: 美國建築師協會會員 Charles A. Platt
 美國建築師協會會員 Anne Holford-Smith
 美國建築師協會會員 Kathryn Crowley

Platt Byard Dovell White was asked by The Andrew W. Mellon Foundation to replan and expand its headquarter offices specifically to add space for major new initiatives.

For years, the self-effacing headquarters of the Mellon Foundation could be found, only with difficulty, in five brownstones on East Sixty-second Street. For an expansion, the foundation acquired three additional brownstones on Sixty-first Street. The redevelopment adds and expands upward a succession of modest brownstones - including the house once rented by Peggy Guggenheim. A new structure within includes two new floors; its exterior expression remains abstract. Interiors are transformed with offices, meeting rooms, and libraries for new education and art-support programs, and a midblock garden provides a new focus for the collegial life of the foundation.

Andrew W. Mellon基金會邀請Platt Byard Dovell White對其總部辦公樓進行重新設計和擴建,旨在將其擴建成為主要的新辦公大樓。

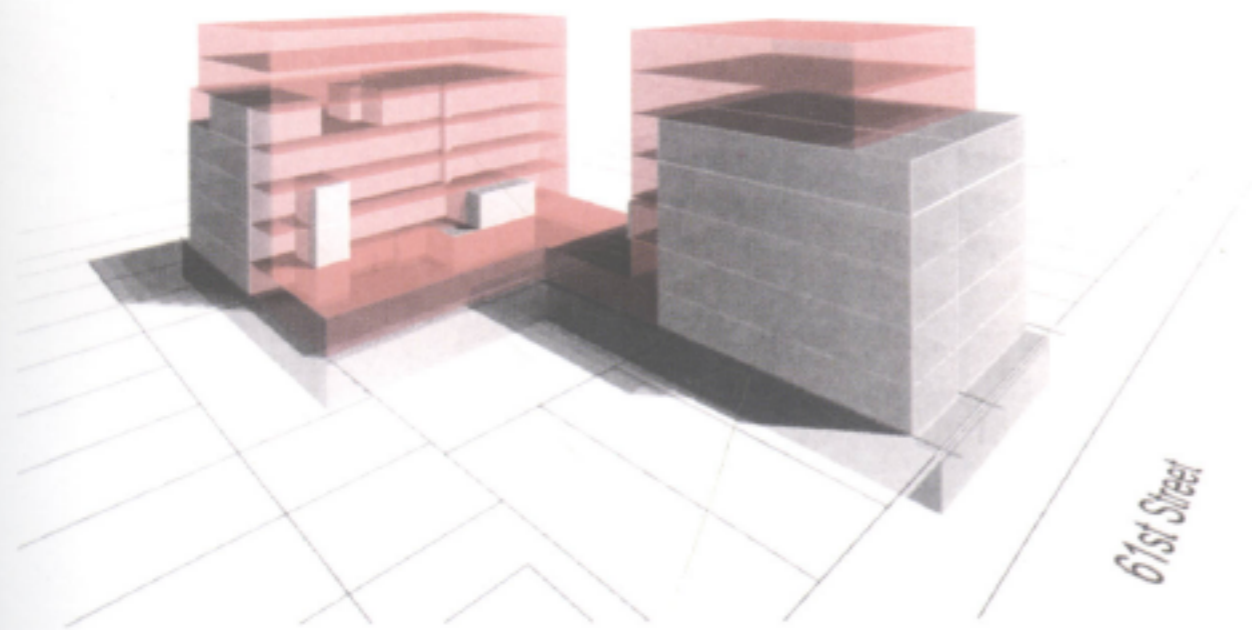
多年來,想在第62大街東段的五座褐石屋中找到不起眼的Mellon總部還有些困難。為了擴建其總部,該基金會又在第61大街上擁有了3座褐石屋。重新開發辦公樓為基金會的舊褐石屋增加了新的伙伴,包括曾經被Peggy Guggenheim租走的房子。新的建築有兩個新的樓層;其外表仍然保留抽象的風格。其內部為適應新的教育和藝術活動的需要而被改為辦公室、會議室和圖書館。一個從中間分成兩半的花園成了基金會社團生活的新焦點。











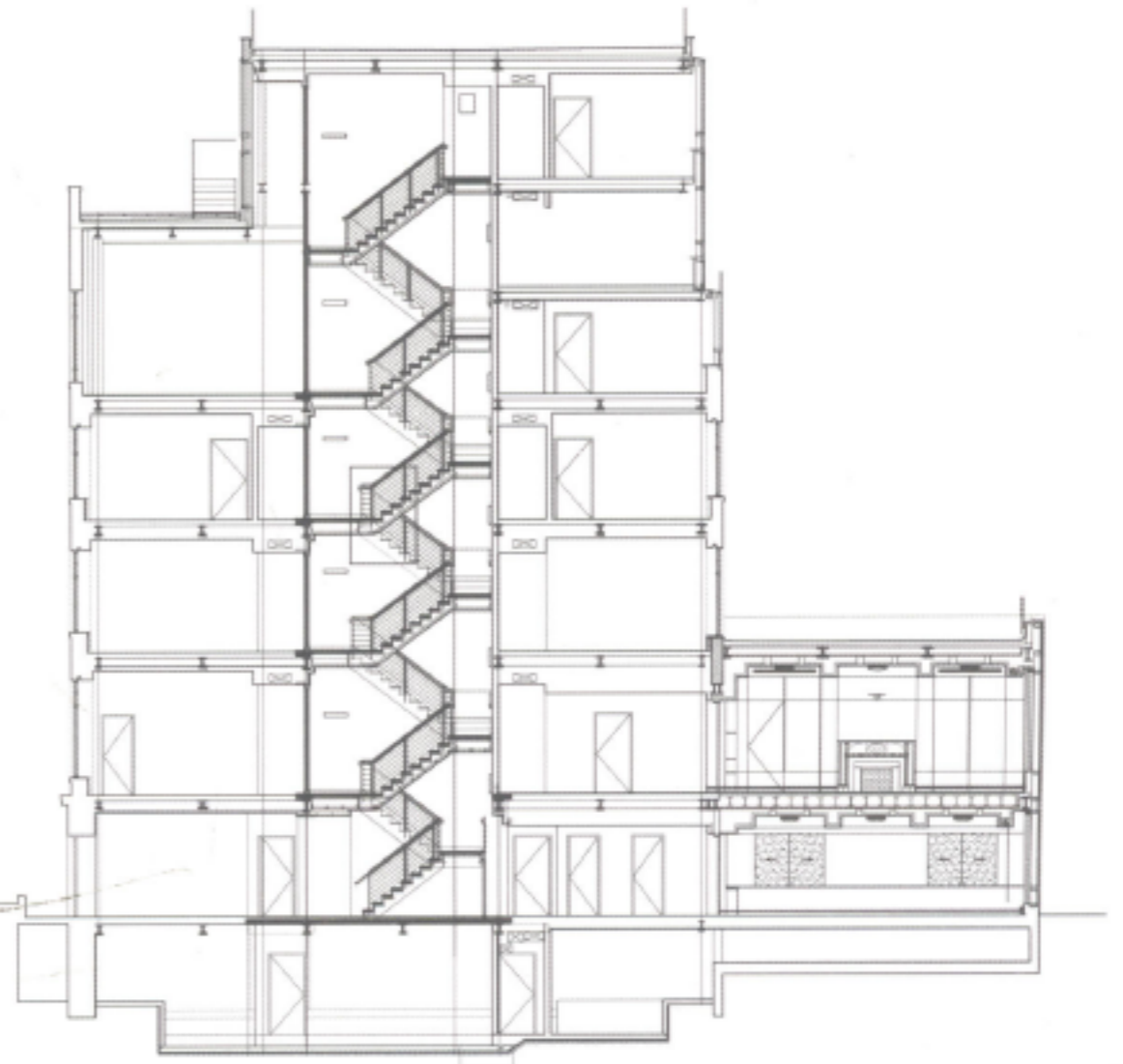
Program Allocation
模型圖



Model
模型圖



Floor plan
樓面平面圖



Section
剖面圖