



Façade 建筑外观

Pontevedra Campus

In the planning of the Campus of Pontevedra, the geometries shaping "local traces" and a nature still with potential, super put on the intention of creating an atmosphere that results from the permeability and presence of the environmental peculiarities, added to the decision to make the diverse activities of the university life take part among them, through two mechanisms: visual continuities in horizontal and vertical section, and conversion of circulation spaces in relation areas.

It leads to taking the most of reliving the river as organiser of the city, to deal and to propose the campus as community space of culture and leisure, and to recover the area of the campus and the river as park and as defined ecozone.

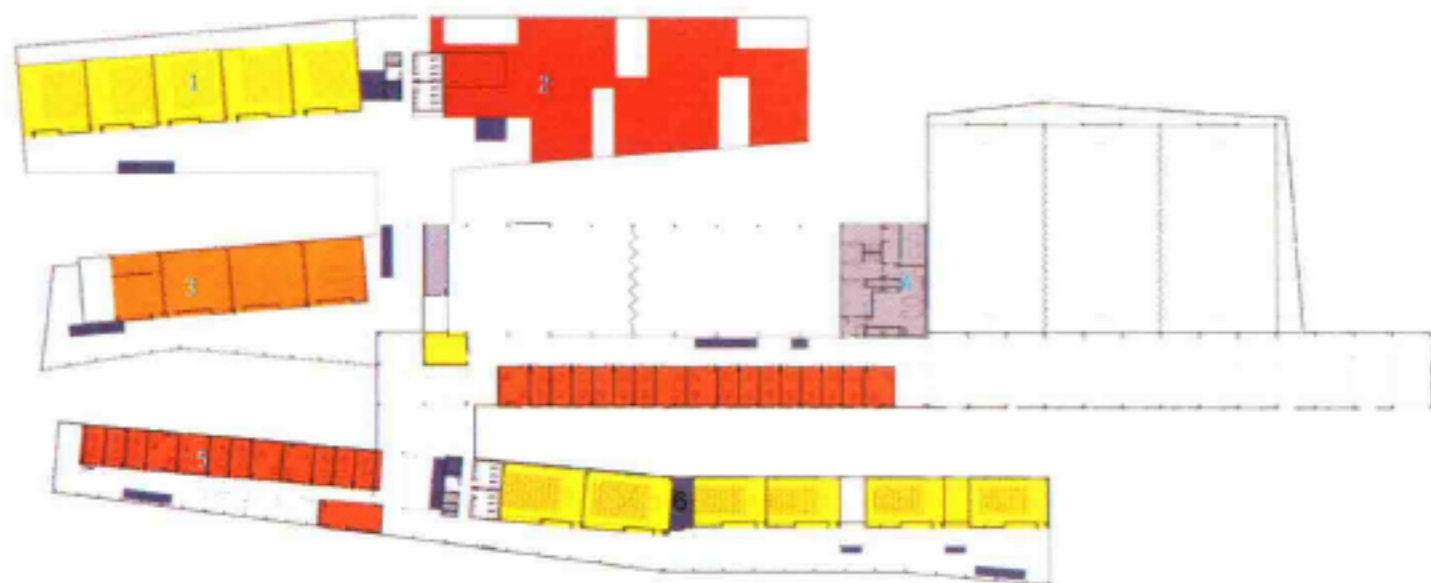
The central area of the campus is pedestrianised and creates a central-covered main square covered as a place that holds different events, which "sews" the buildings isolated. The landscape treatment joins the values of the natural space with the cultural place, coming together an ecozone of bank with a constructed garden, and the campus joins across entail with the river in the net bank path network that connect, with the city.

蓬特韦德拉学校

在蓬特韦德拉学校的规划中，具有区域特色的几何图案和自然的宁静感营造出一种亲和的氛围和独特的环境。校园设计通过两种机械系统——水平和垂直方向的视觉连续性与流通空间之间的相互转换实现了校园活动的多样性。

河流作为城市的规划者，将校园空间规划入社区文娱空间的一部分。校园和河流一起打造了一个生态公园。

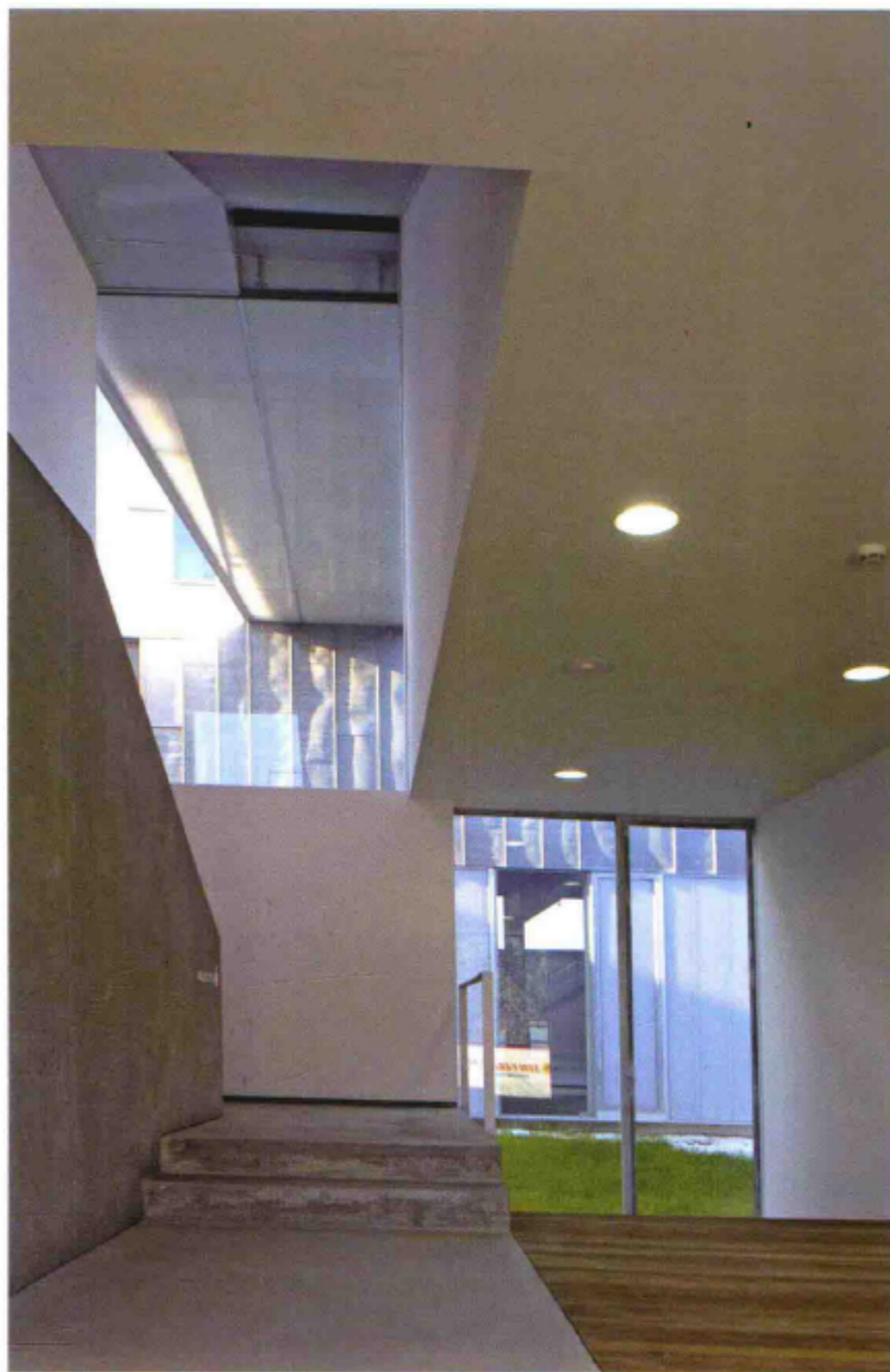
校园的中心区域是步行区，有一个可以举行各种活动的中心广场。广场还将校园内分散的建筑串联了起来。校园的景观设计与自然空间结合在一起，与学校的文化空间一起在河岸形成了一个生态区。校园与河流、河岸一起形成了一个网络，与城市紧密联系在一起。



1. 教室
 2. 大学图书馆
 3. 工作室/实验室
 4. 办公室
 5. 楼梯/电梯
1. lecture room
 2. university library
 3. work room/lab
 4. office
 5. stairs/lifts



走廊 Corridor



门窗细节 Details of openings



体育馆 Gym

Photo: Manuel González Vicente

Educational

Completion Date: 2010

Architect: Irigarri+Piñera Arquitectos