

Features 项目亮点

The design pays attention to achieve the balance among diversity, interestingness, unity and integrity. Four courts are designed for distinctly unique shopping experiences. Skillful edge design has well connected different spaces of different themes.

设计注重超大商业空间的多样性、趣味性、统一性与完整性的平衡，以主题空间的形式对四个中庭做出情景处理，以统一、全局的系列化边缘处理解决不同主题的空间过渡。

Key Words 关键词

Urban Complex in CBD CBD 型城市综合体

Tianjin Galaxy Mall

天津银河商业中心

Super Volume 超大体量

Theme Design 主题设计

Atrium Space 中庭空间

Location: Tianjin, China

Client: Tianjin Infrastructure Construction and Investment Group Co. Ltd.

Architectural Design: TVS Design (USA)

Interior Design: Haiipo Architects

Designers: Wu Haiqing, Zhang Qi, Zhou Qiaoli, Zhang Yifan, Qi Shaoli

Construction Drawing Design: Tianjin Institute of Architectural Design

Total Floor Area: 360,000 m²

项目地点: 中国天津市

客户: 天津城投集团

建筑设计: 美国 TVS 建筑设计事务所

室内设计: 上海海波建筑设计事务所

设计人员: 吴海青、张琪、周乔莉、张一帆、戚少立

施工图设计: 天津市建筑设计院

总建筑面积: 360 000 m²

» Overview

Standing in the city landmark of Tianjin — the Tianjin Cultural Complex, the Galaxy Mall is built around a lake with the Zhong Hua Opera House, the museum buildings, the art gallery and the library. Occupying a total floor area of 360,000 m², Tianjin Galaxy Mall ranks top at the list of large commercial complexes in today's China. The interior design requires to make balance among diversity, attractiveness, unity and integrity, along with well management of huge atrium space etc., all those put forward a great challenge to the designers.

» 项目概况

项目地处天津重要城市地标——天津文化中心广场内，与天津歌剧院、博物馆、美术馆、图书馆围湖而建。商业中心本身 36 万 m² 的超大体量在目前中国一线城市的大型商业体中位居首位。其室内设计在如何把控多样性、趣味性、统一性和完整性的平衡，以及对超大中庭空间的处理等方面对设计团队提出了极大的挑战。



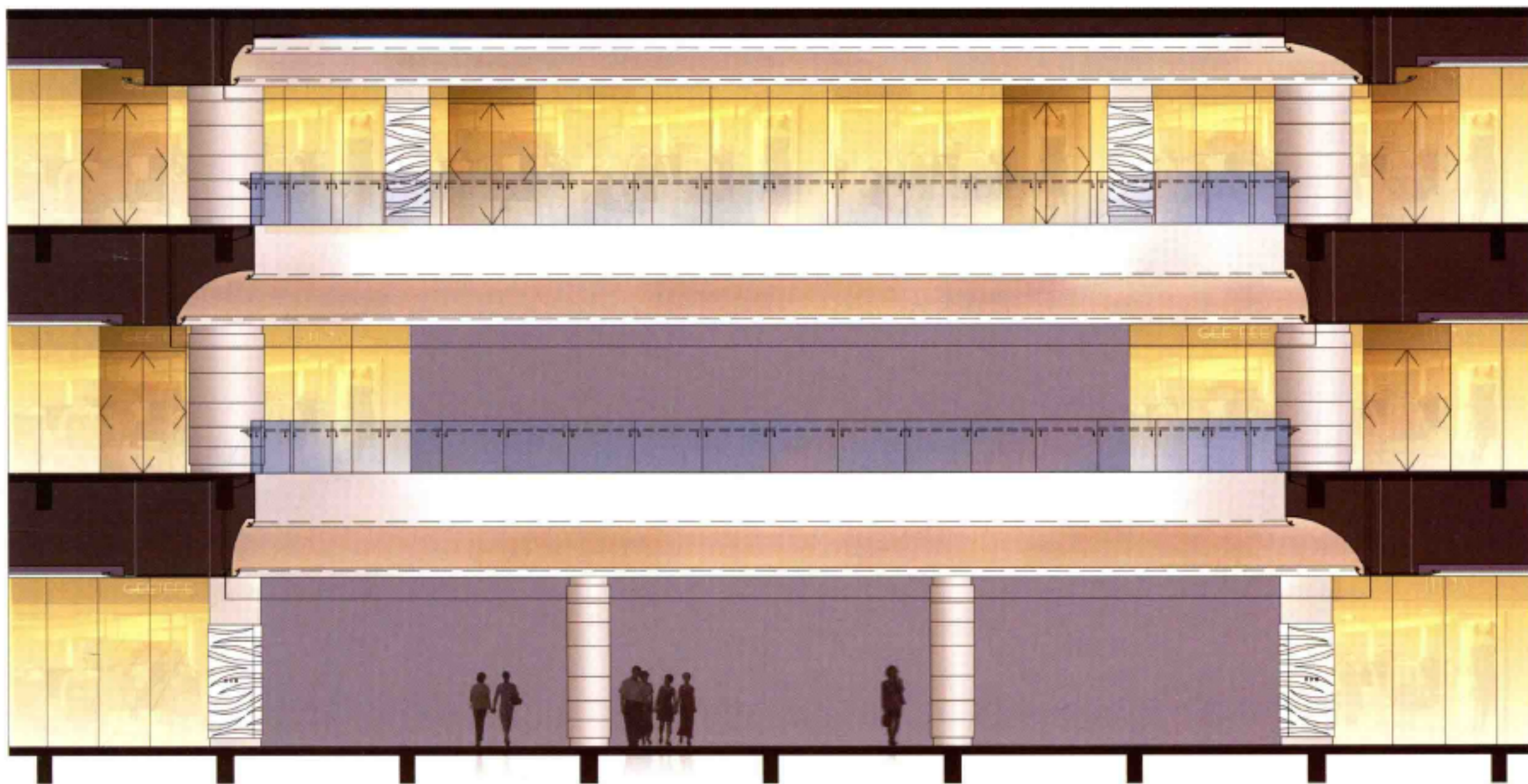


» Planning

The arrangement of four large atriums and the layout of elliptic annular shopping channels well solve the spatial sequence and make the shopping route comparatively convenient and reasonable. In order to correspond to "the galactic center" theme, the four large atriums are separately named as "Earth Courts", "Star", "Sun" and "Moon". The floor design and the cellar design are fully expressed through the four themes, with distinctive characters and strong

cultural feeling. What is more, within the interior design, various edge processing and connect processing are conducted. And the arc linear processing with natural form is used a lot, making a unified arrangement, so as to step from one space to another space with novelty and no an incongruous sight.



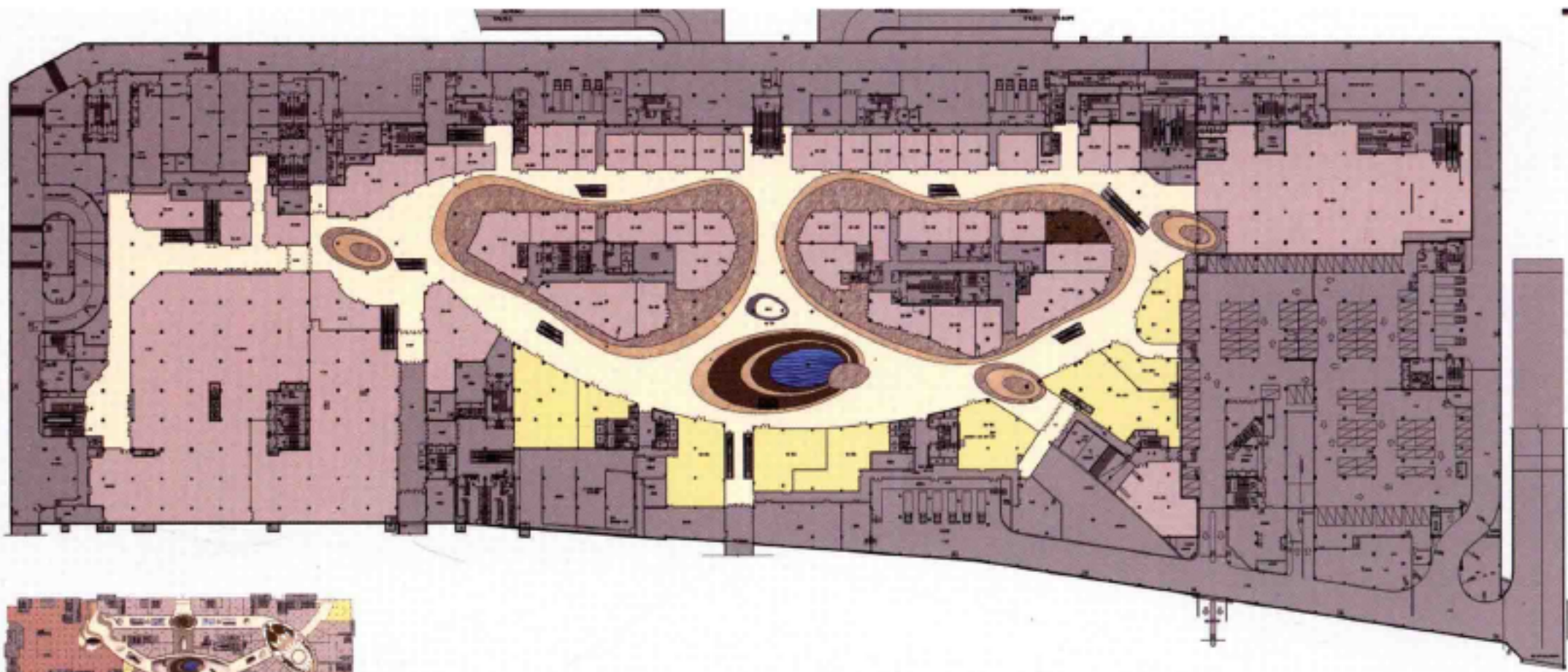


» 规划布局

项目中四个大型中庭的设置与椭圆形环状购物通道的布置较好地解决了空间序列问题，并使得购物路线变得相对便捷合理。为呼应“银河中心”的主题，特将四个大型中庭以“大地”、“星空”、“日辉”、“明月”的主题命名，在地面、天花的设计上围绕四个主题进行充分演

绎，特色鲜明，文化感强烈。此外还对各种边缘处理、交接处理，以及本项目设计中大量使用的自然生态的弧线线型处理，均作了统一安排，使得从一个空间步入另一个空间时有新鲜感而无生硬突兀感。





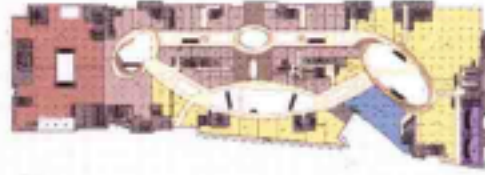
Basement Plan
地下一层平面图



1st Floor Plan
一层平面图



2nd Floor Plan
二层平面图



3rd Floor Plan
三层平面图



4th Floor Plan
四层平面图



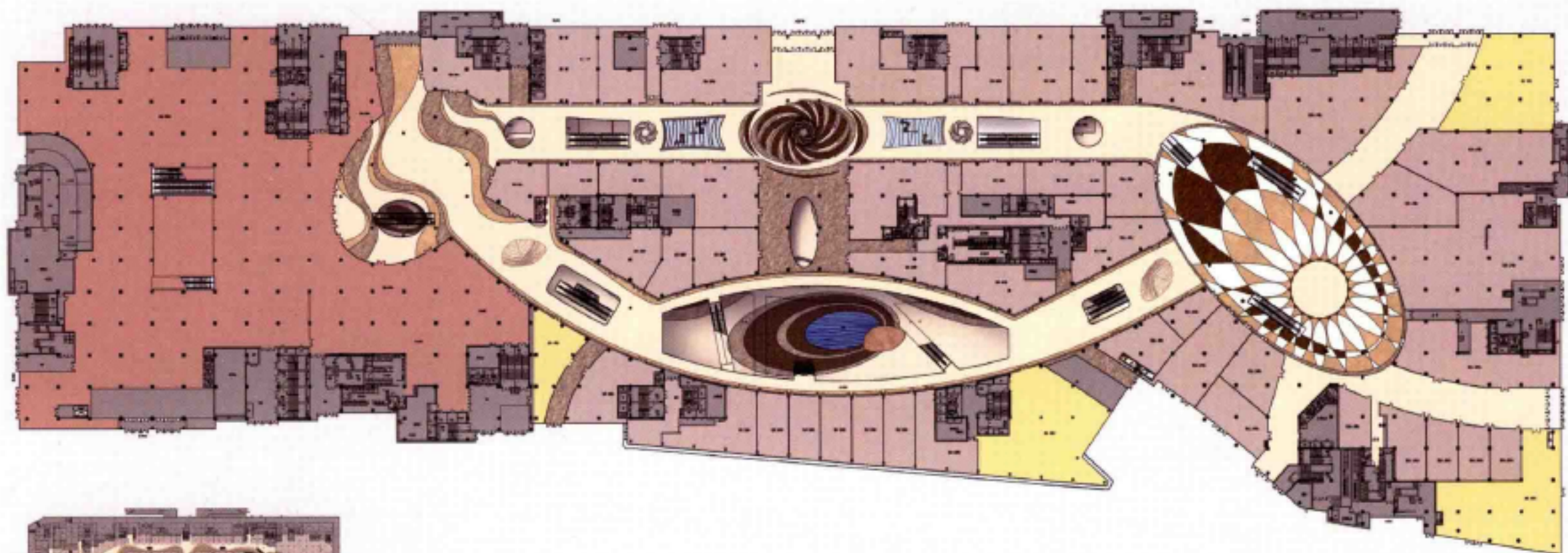
5th Floor Plan
五层平面图

» Interior Space Design

At the earlier preparatory stage, each party has required solutions about the appearance of the steel structure exposure over the large atriums, and about the strong skylight due to a large glass canopy. To settle those problems, designers combines large lightings with special design and themed ceilings with new processing. At the meanwhile, the large vertical water sheet, garden of seasons, musical art etc. increase the culture feature, interesting and artistic quality of the indoor space. Also,

the performing-arts parts are designed for different atriums for enhancing culture feature. Interesting and artistic quality of the mall. Within the atrium, "Earth Courts", the edges of guard rails are taken advantage of creating a large cascade music water curtain, which has never existed in any commercial space and has built a comfortable place for resting and viewing.





1st Floor Plan
一层平面图



Basement Plan
地下一层平面图



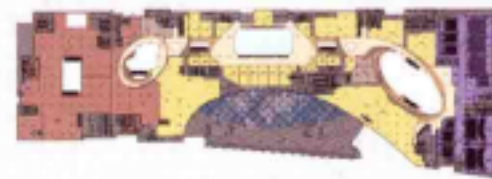
2nd Floor Plan
二层平面图



3rd Floor Plan
三层平面图



4th Floor Plan
四层平面图

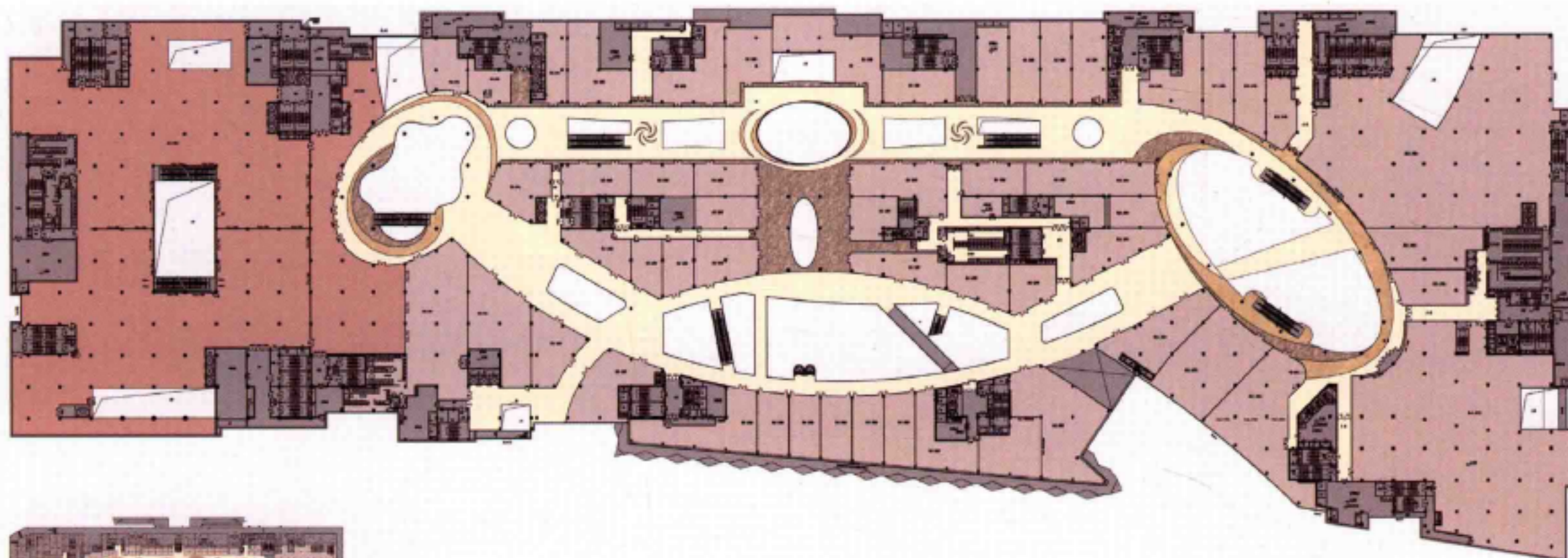


5th Floor Plan
五层平面图

» 室内空间设计

在前期方案阶段，各方均对大型中庭空间上方外露的钢结构的美观问题，以及大型玻璃天棚所带来的天光过于强烈的问题提出了解决需求。设计师以新颖的主题化的天顶处理形式和特殊设计的大型灯具组合，解决了大型中庭空间上玻璃天棚的钢结构外露和过多天光问题，同时以室内大型垂直音乐水帘、四季花园、音乐艺术表现等手法增加室内空间的文化性、

趣味性和艺术性。为增加这一大型商业中心的文化性、趣味性和艺术性，在不同中庭空间内增设了艺术表演区，在地球厅内还利用层层叠落的中庭扶手边缘，设计了目前尚未在商业空间中出现过的大型叠级音乐水帘，与该处的四季厅构成了舒适的休息观赏场所。



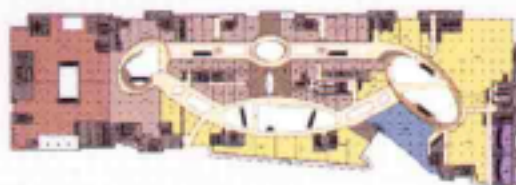
2nd Floor Plan
二层平面图



Basement Plan
地下一层平面图



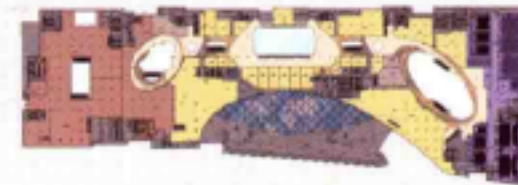
1st Floor Plan
一层平面图



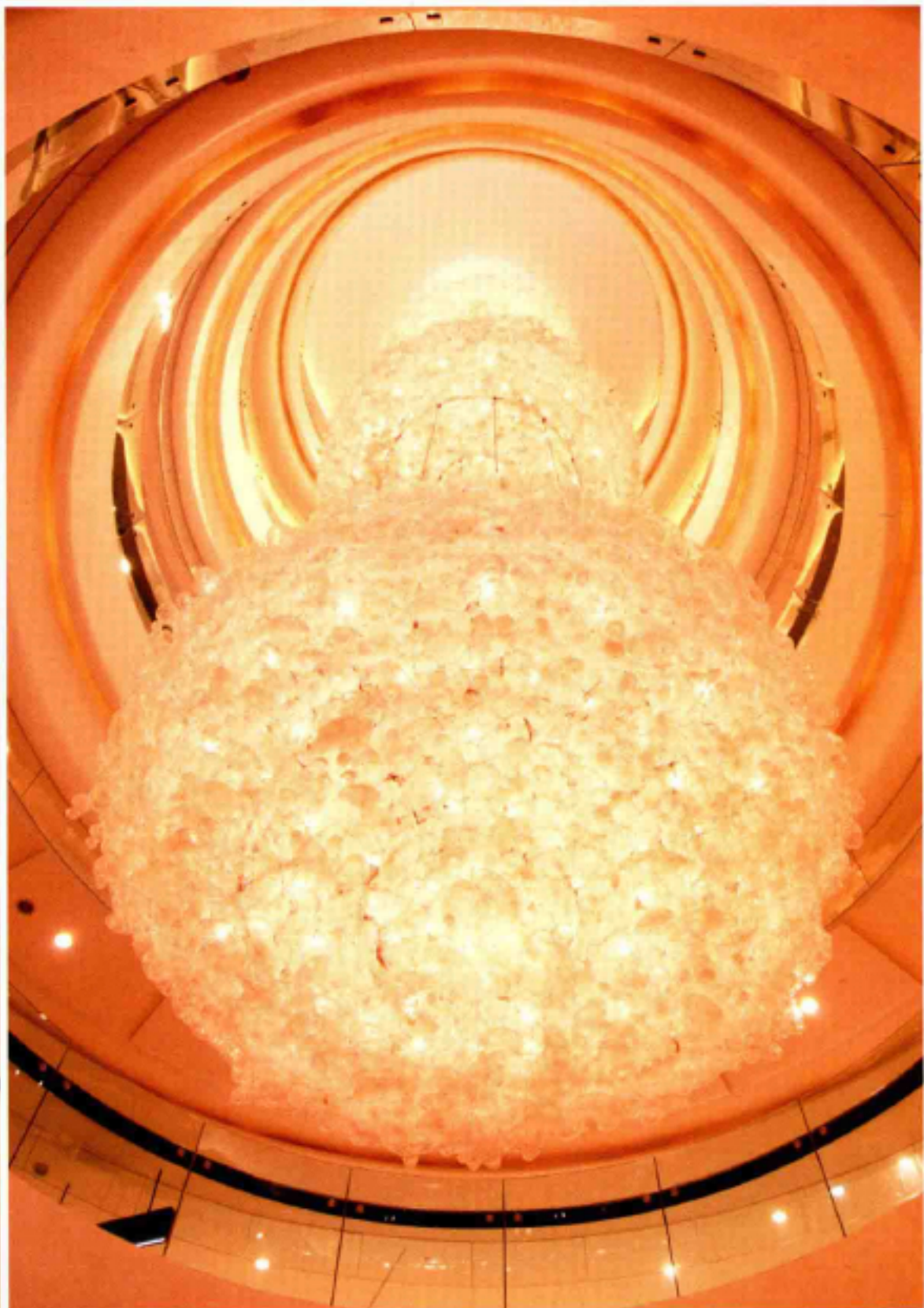
3rd Floor Plan
三层平面图

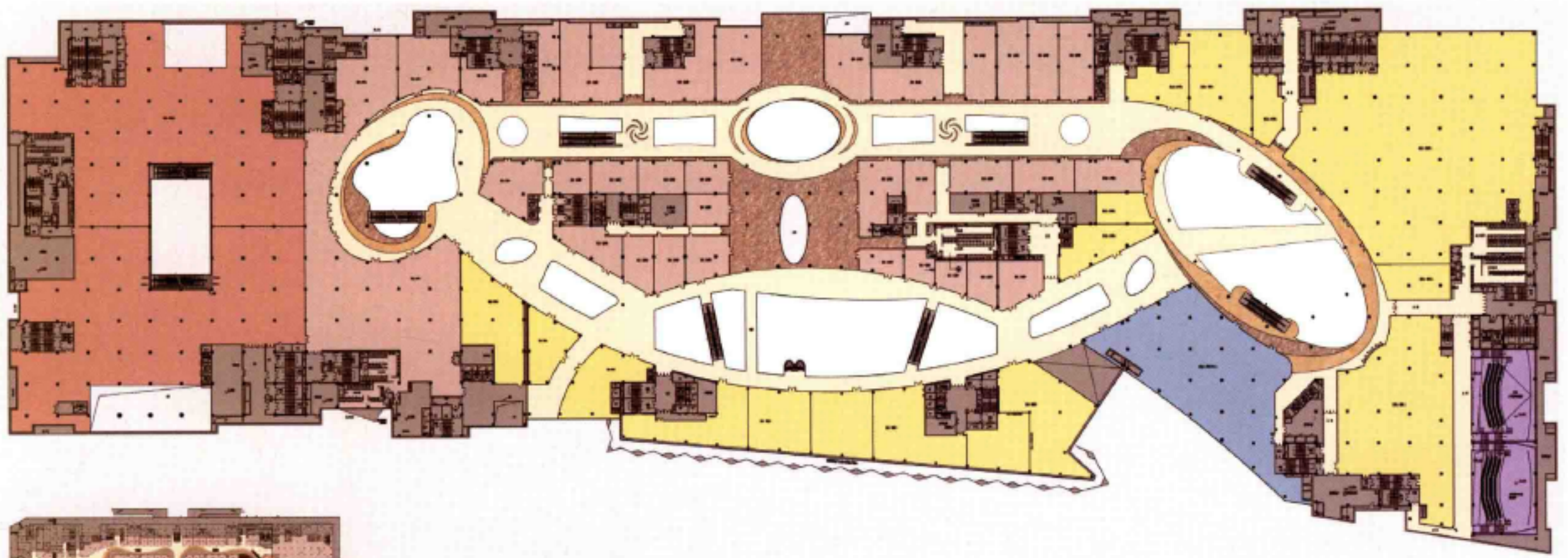


4th Floor Plan
四层平面图



5th Floor Plan
五层平面图





3rd Floor Plan
三层平面图



Basement Plan
地下一层平面图



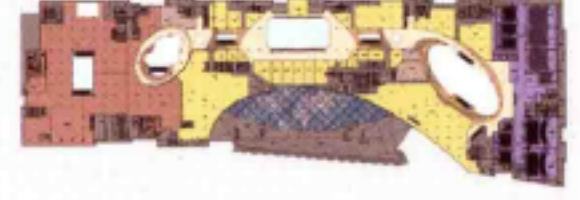
1st Floor Plan
一层平面图



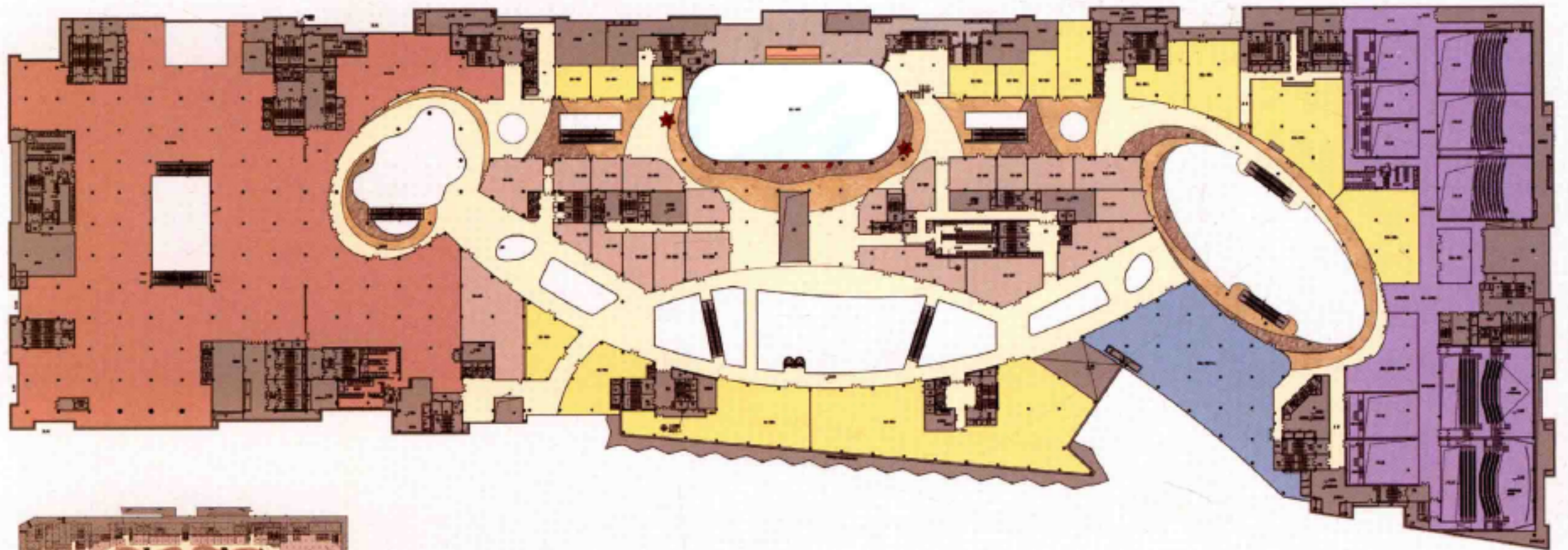
2nd Floor Plan
二层平面图



4th Floor Plan
四层平面图



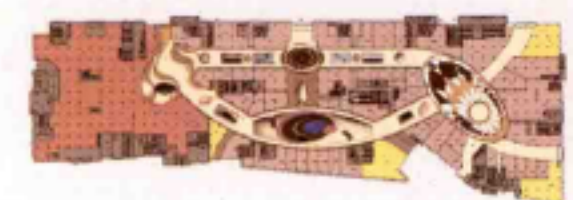
5th Floor Plan
五层平面图



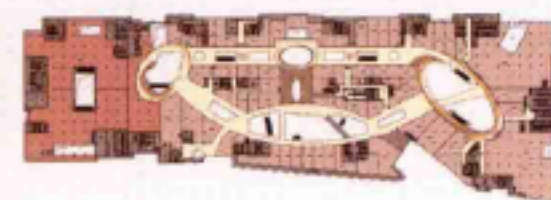
4th Floor Plan
四层平面图



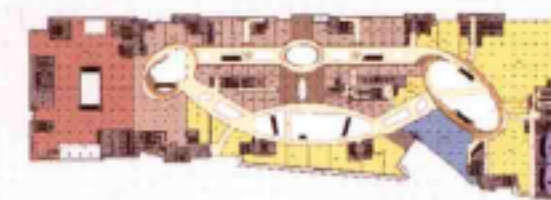
Basement Plan
地下一层平面图



1st Floor Plan
一层平面图



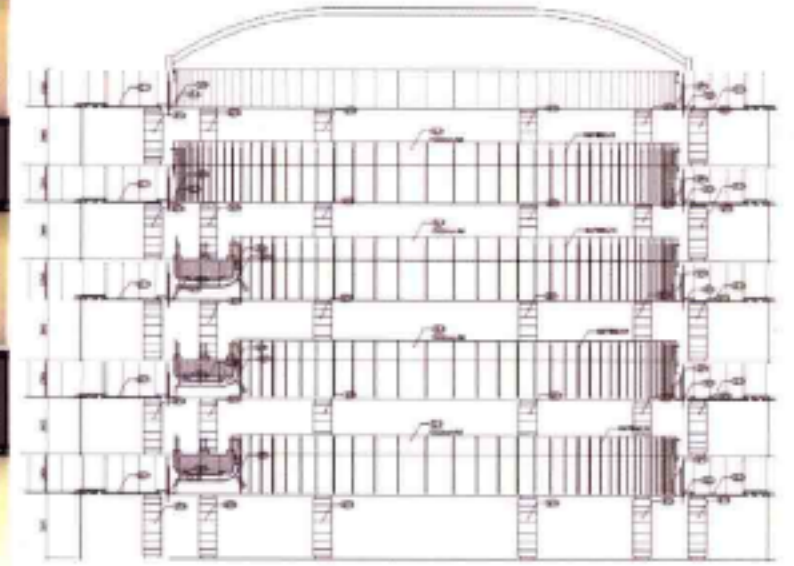
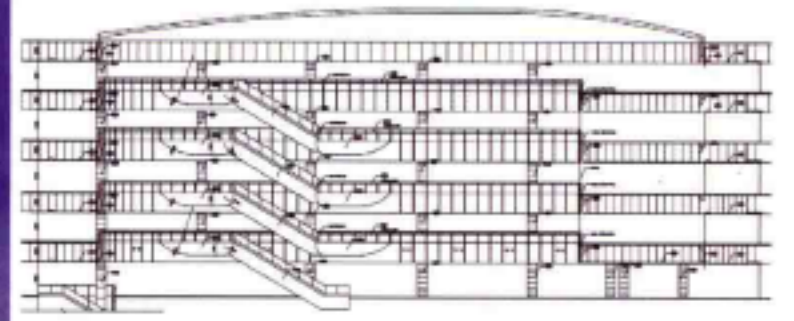
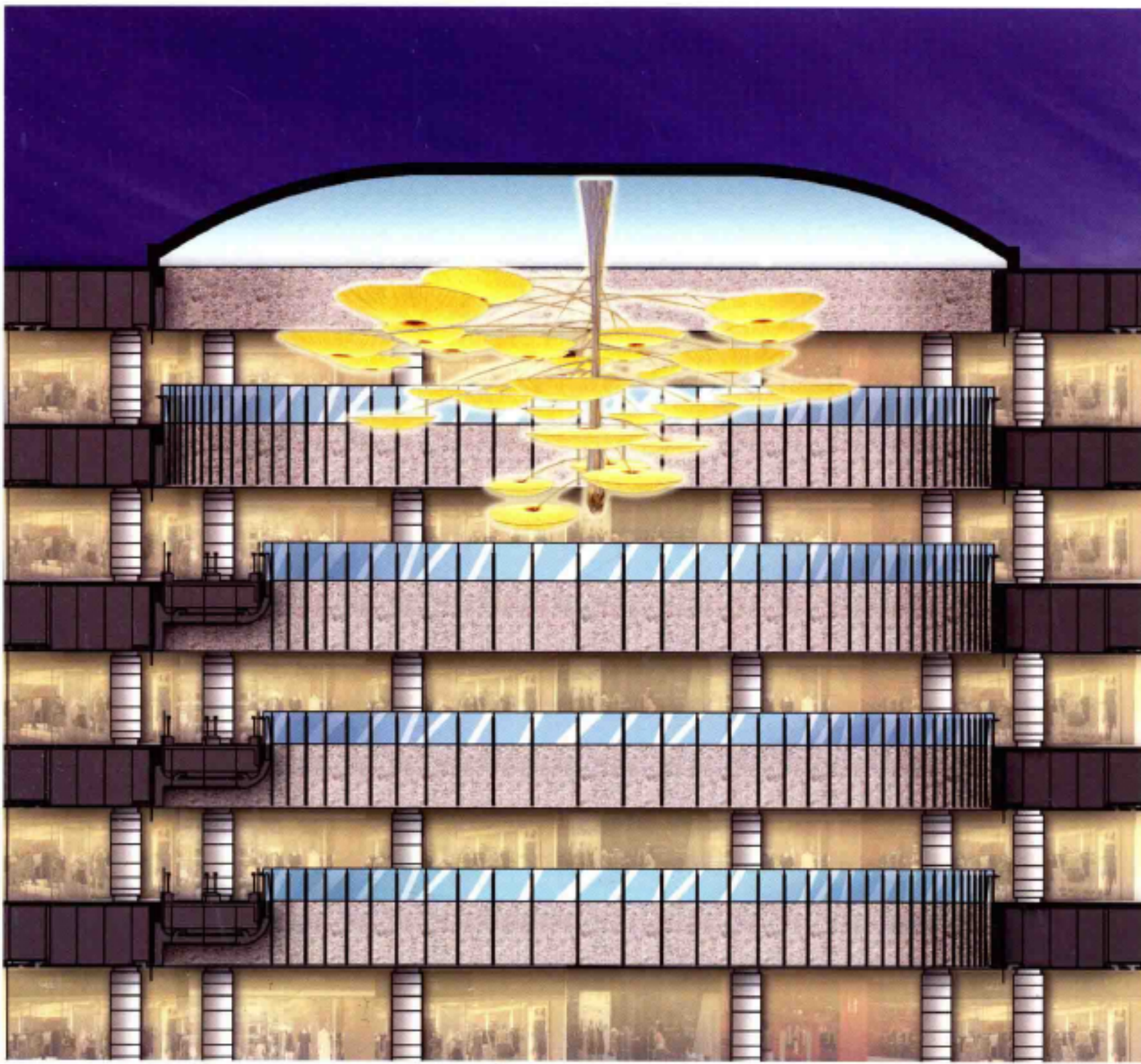
2nd Floor Plan
二层平面图



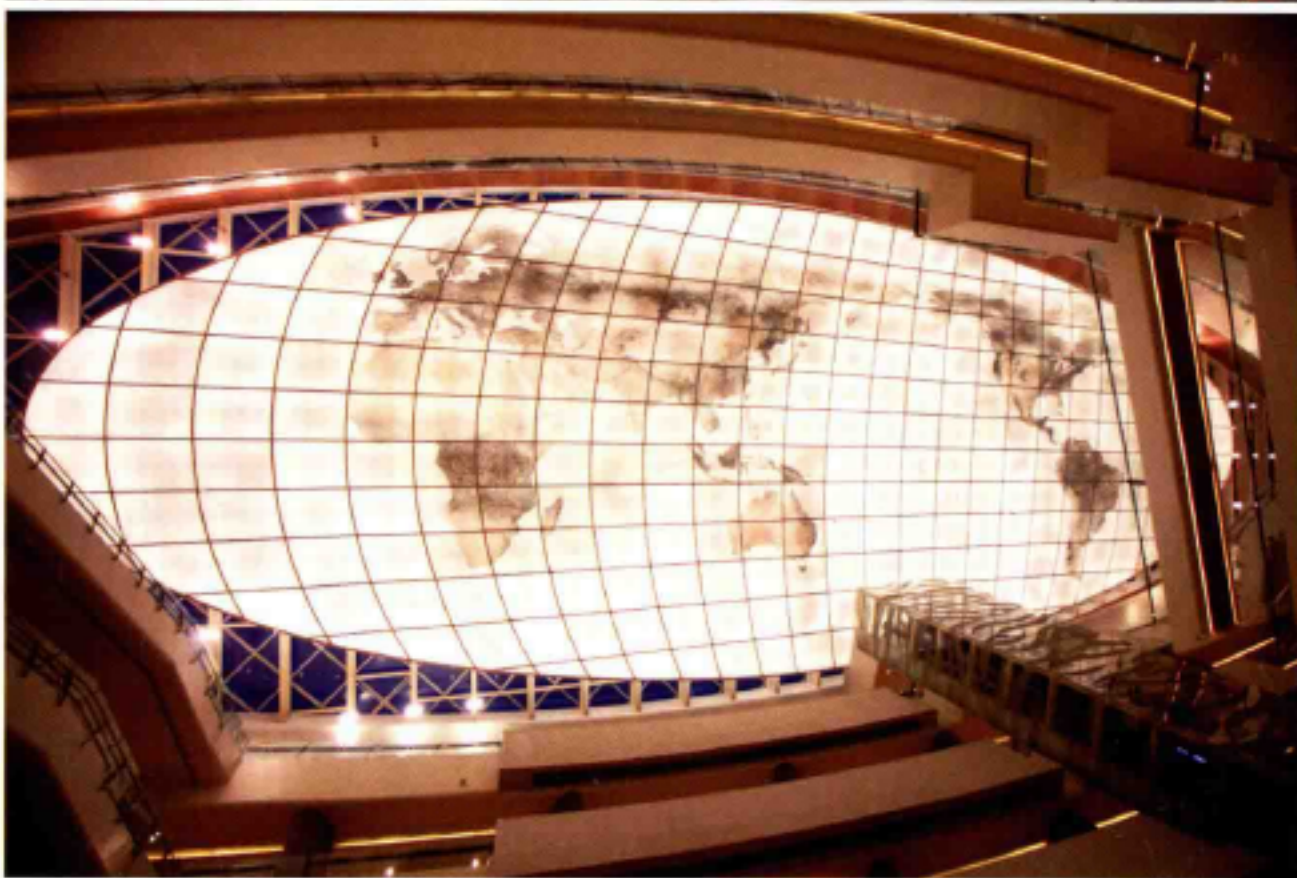
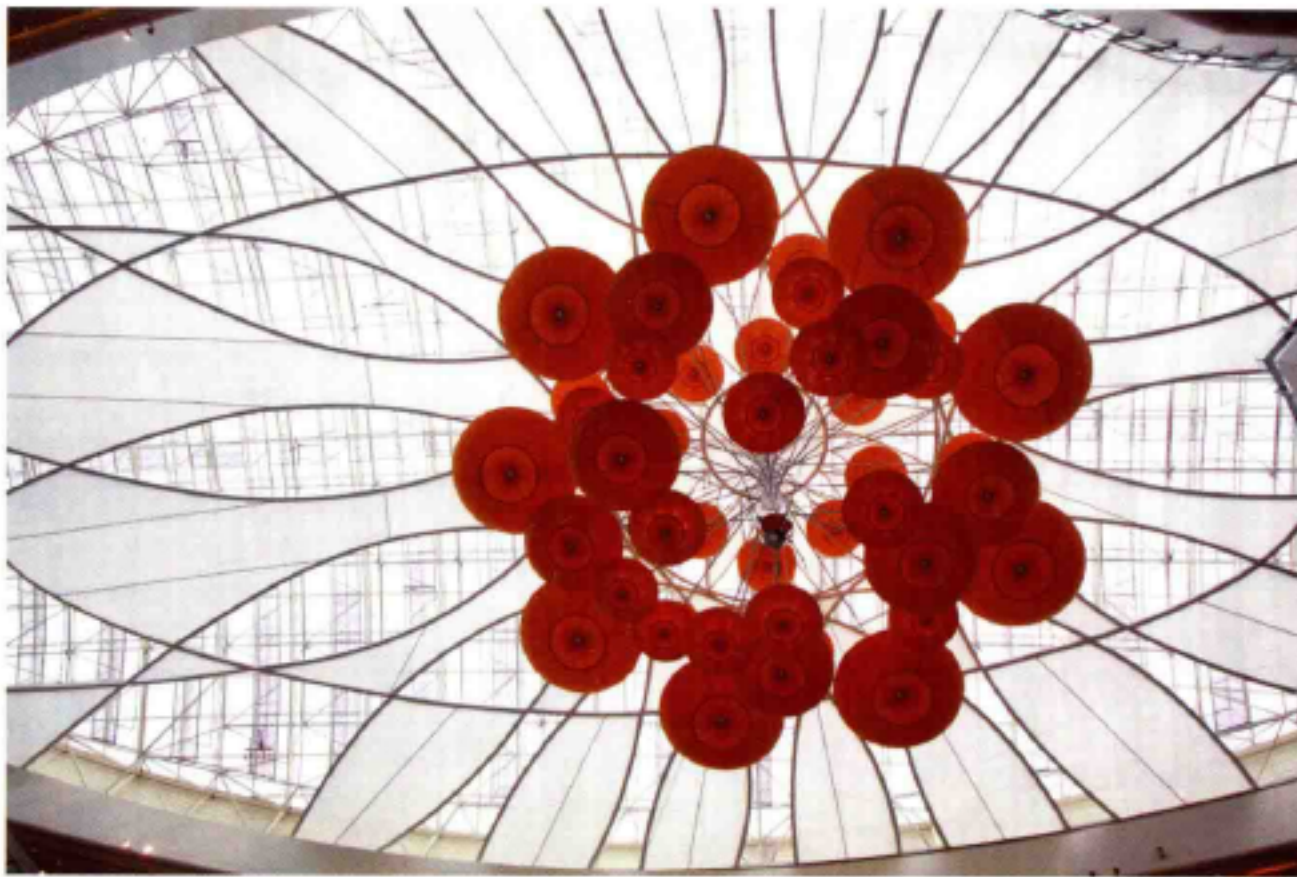
3rd Floor Plan
三层平面图

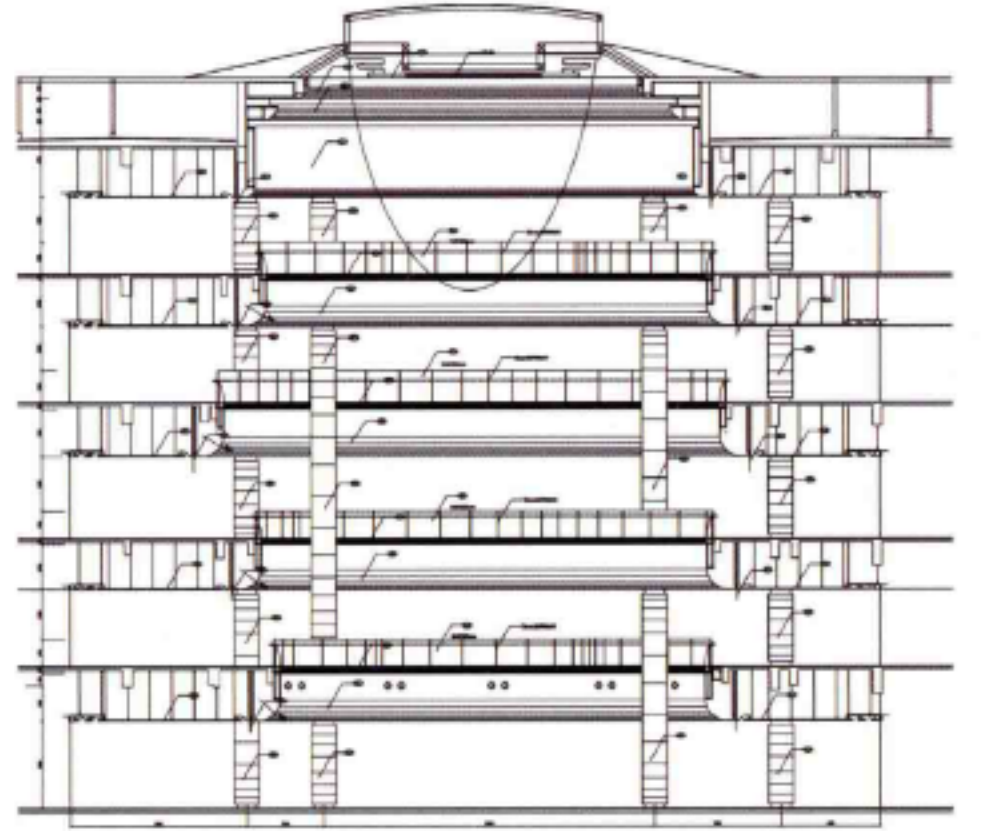
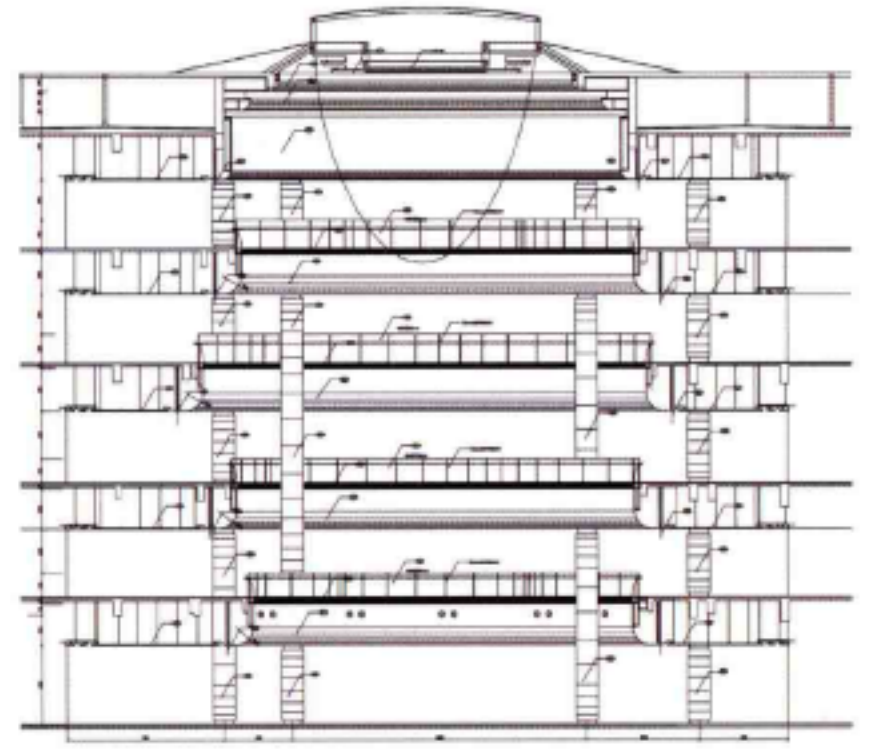
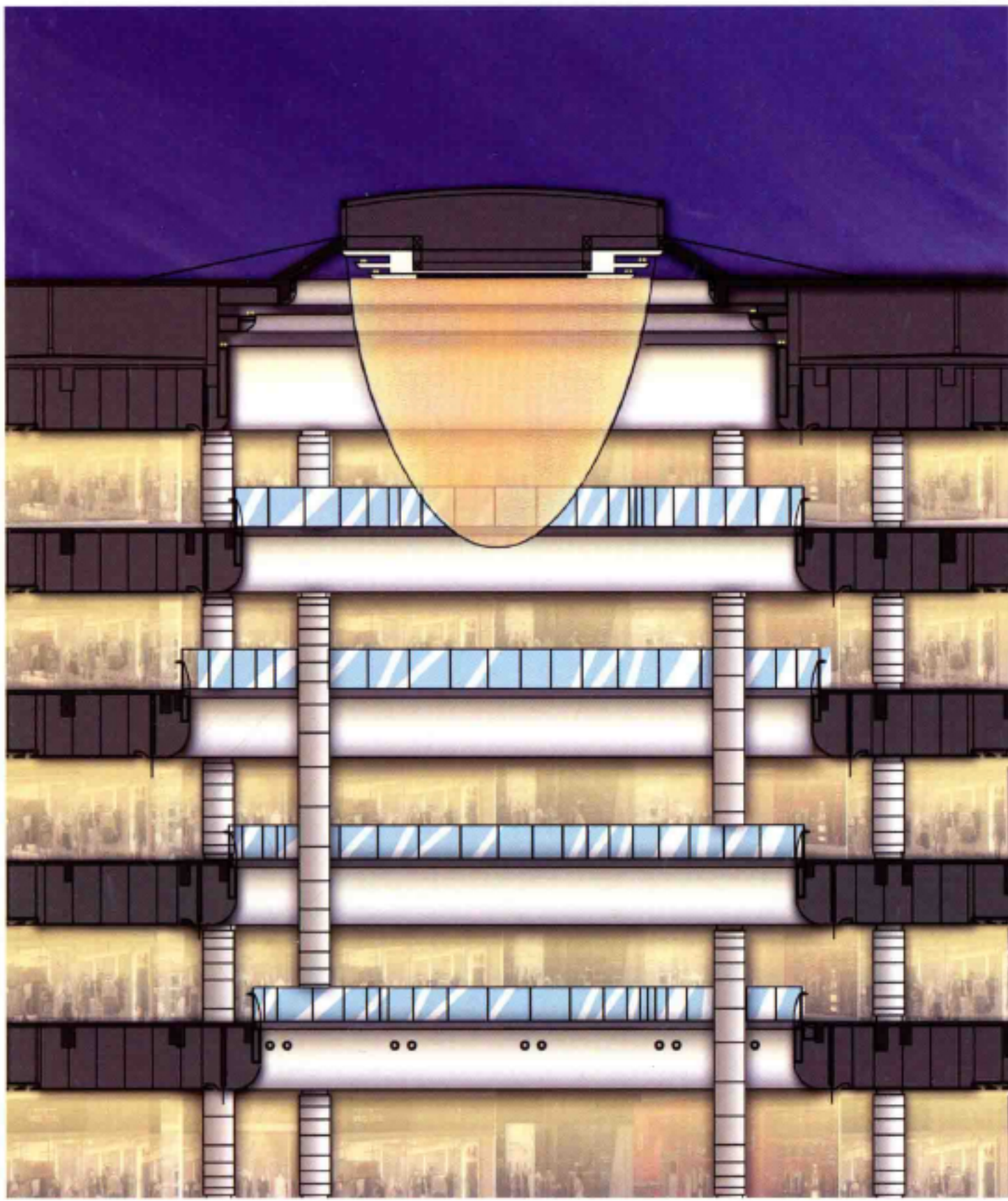


5th Floor Plan
五层平面图



Office of profile elevation
日厅剖立面图





Month profile elevation
月厅剖立面图

