



Site plan  
總平面

Design: 2004-2005  
Location: Yubei District, Chongqing  
Total floor area: 13 545m<sup>2</sup>  
Site area: 6 572m<sup>2</sup>  
Building height: 24m

設計時間: 2004年—2005年  
地點: 重慶市渝北區  
總建築面積: 13 545平方米  
占地面積: 6 572平方米  
建築高度: 24米

## Chongqing Tianjiangdingcheng Boyuan Business Street

重慶天江鼎城博園商業街

**Design company:** Atelier DESHAUS

**Architects:** Zhuang Shen Liu Yichun Chen Yifeng Fan Minji

設計單位: 大舍建築師事務所

設計小組: 莊慎 柳亦春 陳屹峰 範敏姬

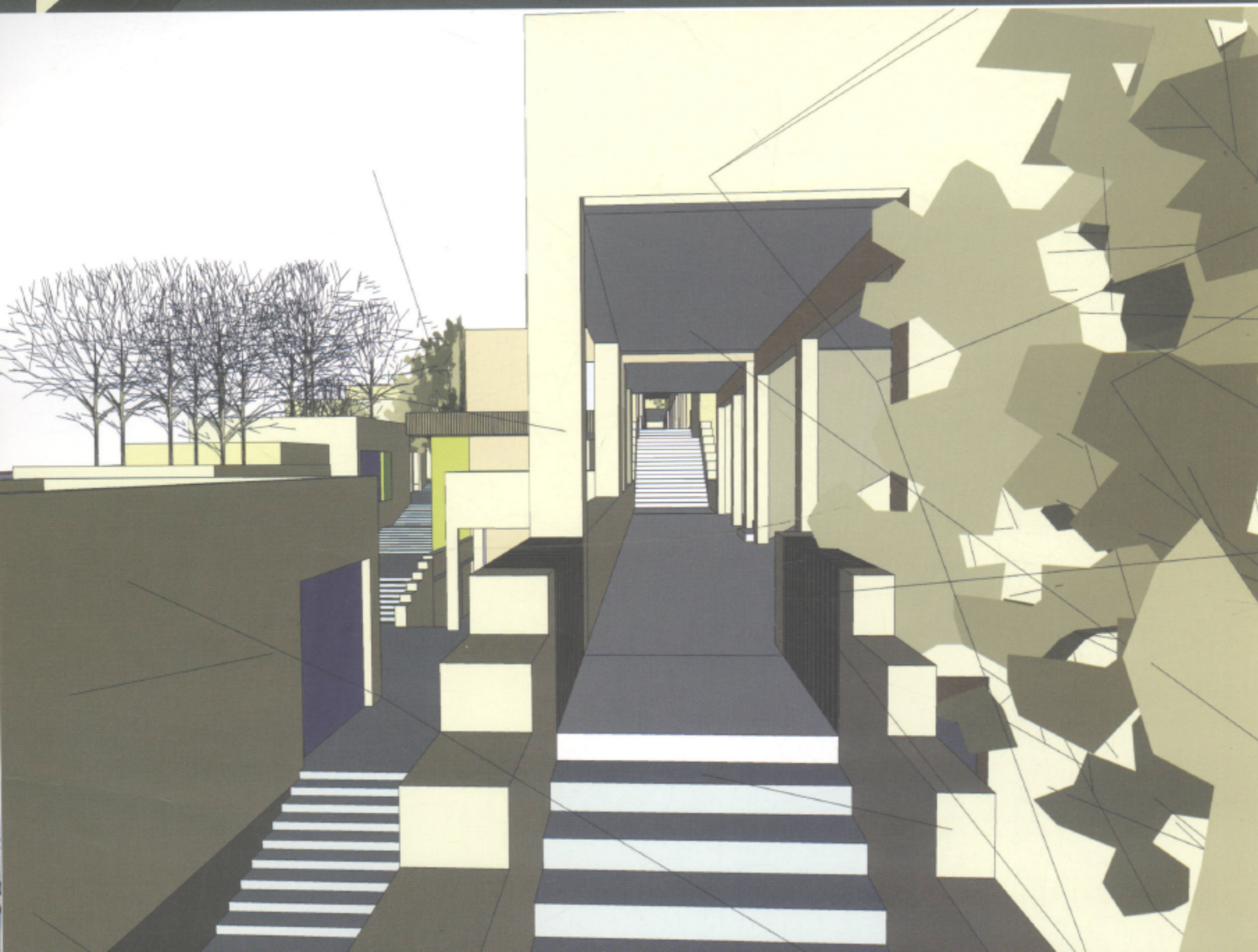
The building of the business street was originally planned to cut into the left and the right part by a straight line. By modifying the road, the architect enclosed two parts to an "island". Owing to enormous size of the building, in order to avoid the original natural hill being engulfed by the building, the architectural design creates a new "terrain", a planted island with a sense of place and local feature, in combination with the current landform and the functional feature of the project itself. The street space with multiple rolling levels becomes an important carrier of the building to realize its locality, so as to represent the rich dimension and quality of the local traditional commercial street space of Chongqing. The image of the building finally emerges in the form of an integral cluster within the urban dimension. The building along the inner street highlights intimacy to man and thriving business atmosphere, and allows itself to vary with uncertainty of the business patterns in conjunction with a variety of business spaces.

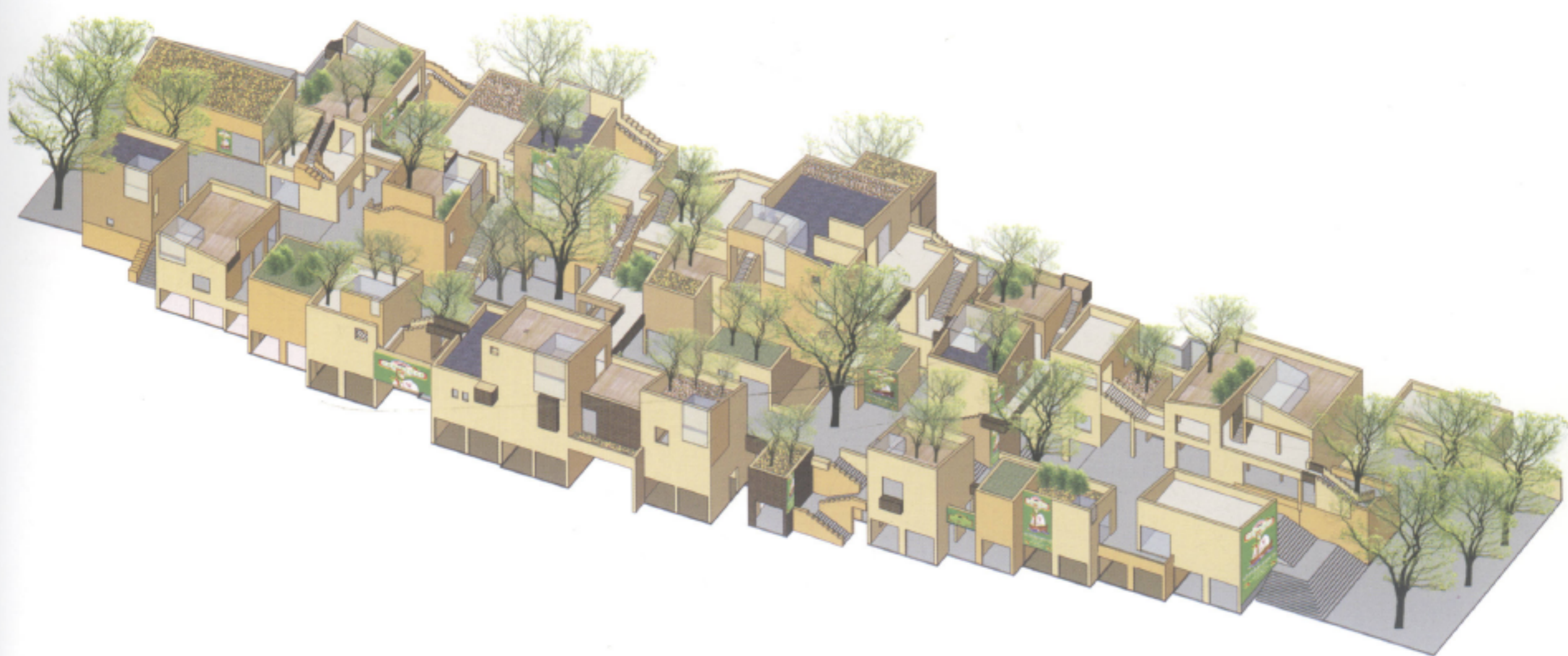
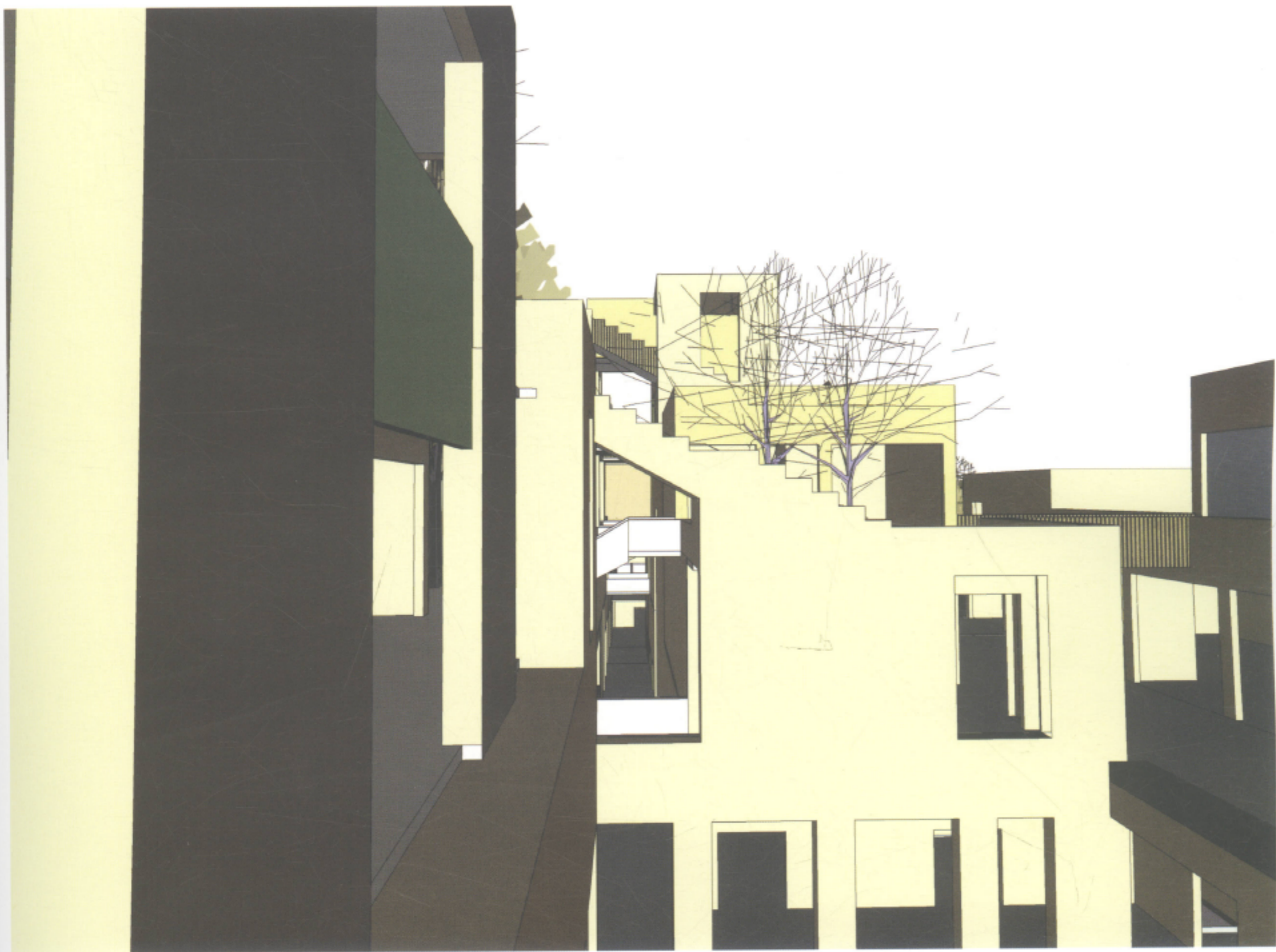
The external facade of the building is mainly veneered with face tiles, mixed and jointed by a series of yellow face tiles. Two faces contrasting in brightness cross at the outside corner, creating a sunny environment for Chongqing, which lacks sunshine.

商業街的建築起初被直線規劃分割成左、右兩部分。建築師將道路加以修改，使原來的兩部分合成一座“島嶼”。由於建築容量較大，為避免原來的自然山體最終被建築物吞沒，建築設計結合現有地形，並結合項目自身的功能特點，進而演繹一個具有場所感與地方特質的新“地形”——一座綠化的島嶼。起伏的多層次街道空間，成為該建築實現其地方性特色的一個重要載體。以體現重慶當地傳統商業街道空間的豐富尺度與質感，建築的形象在城市中最終以一個具有整體感的聚落形態出現。建築沿內街強調近人的親切尺度和豐富繁榮的商業氛圍，結合不同類型的商業空間，允許其自身因為商業模式的不確定性而變化。

建築的外立面主要採用面磚貼面。選取幾種黃色系的面磚混合拼貼，明度強弱的兩個面交在陽角，為少見日照的重慶塑造一個有陽光的环境。



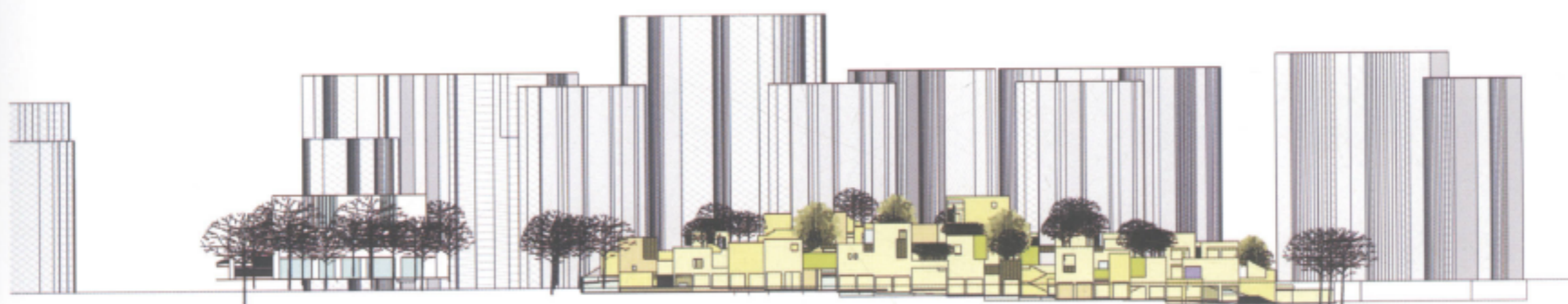




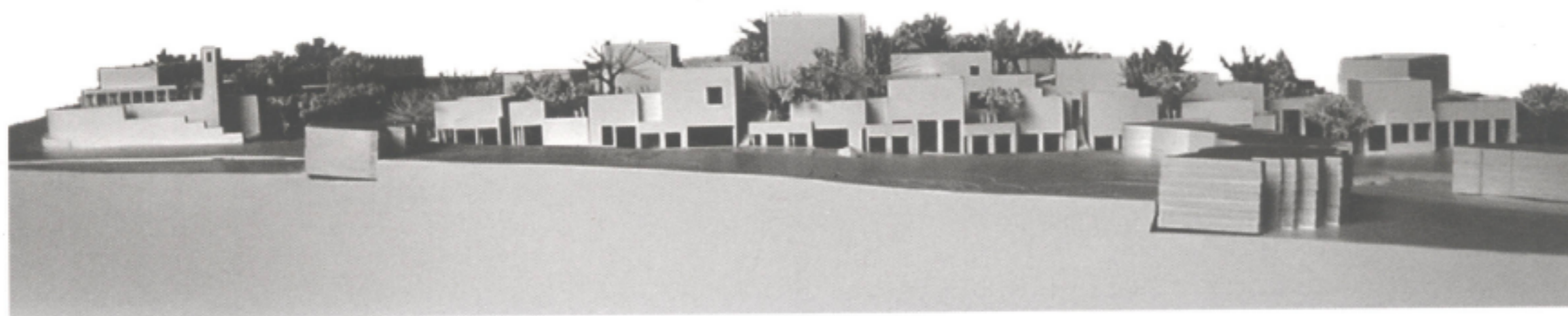




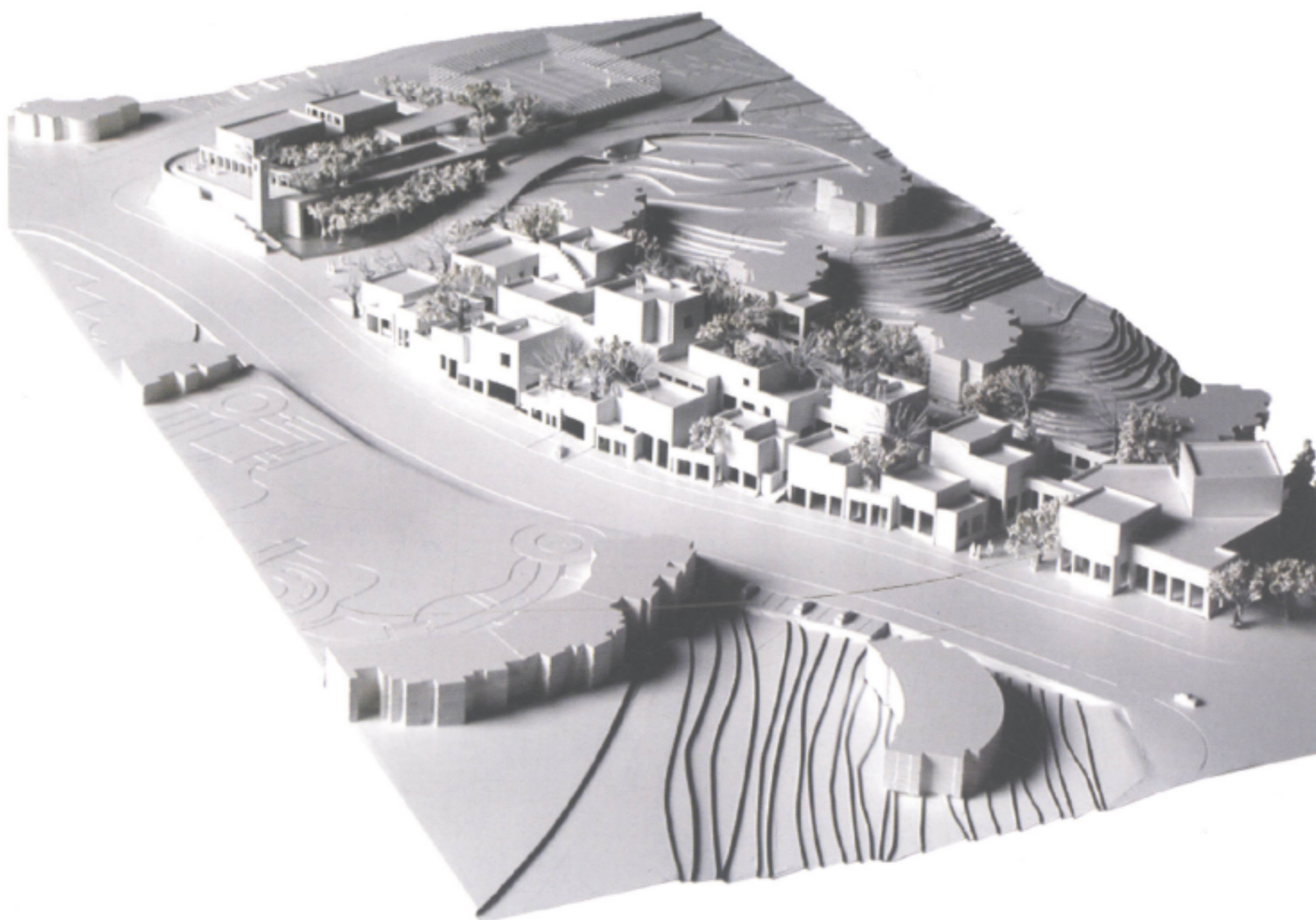
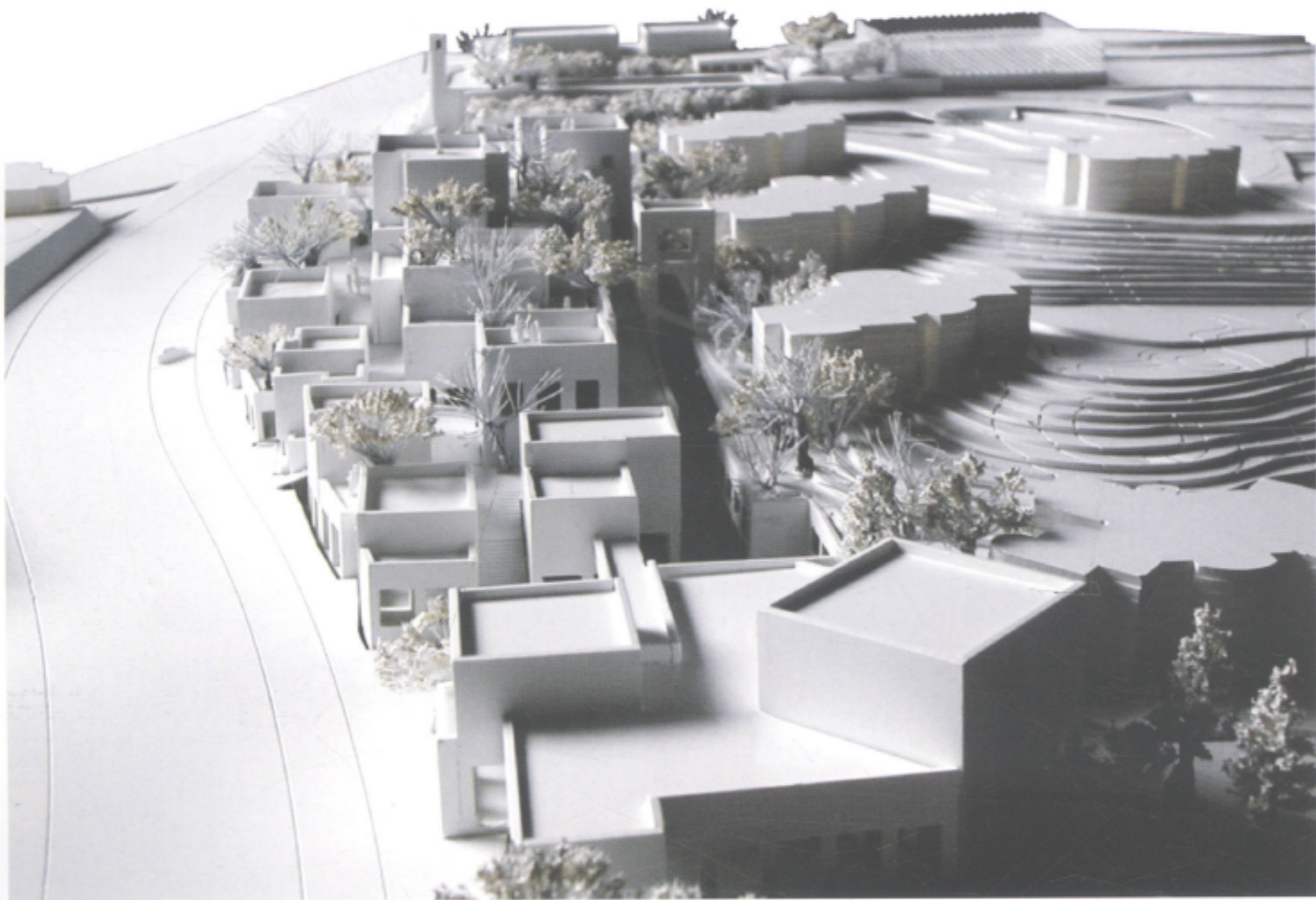
Bird view  
鸟瞰图

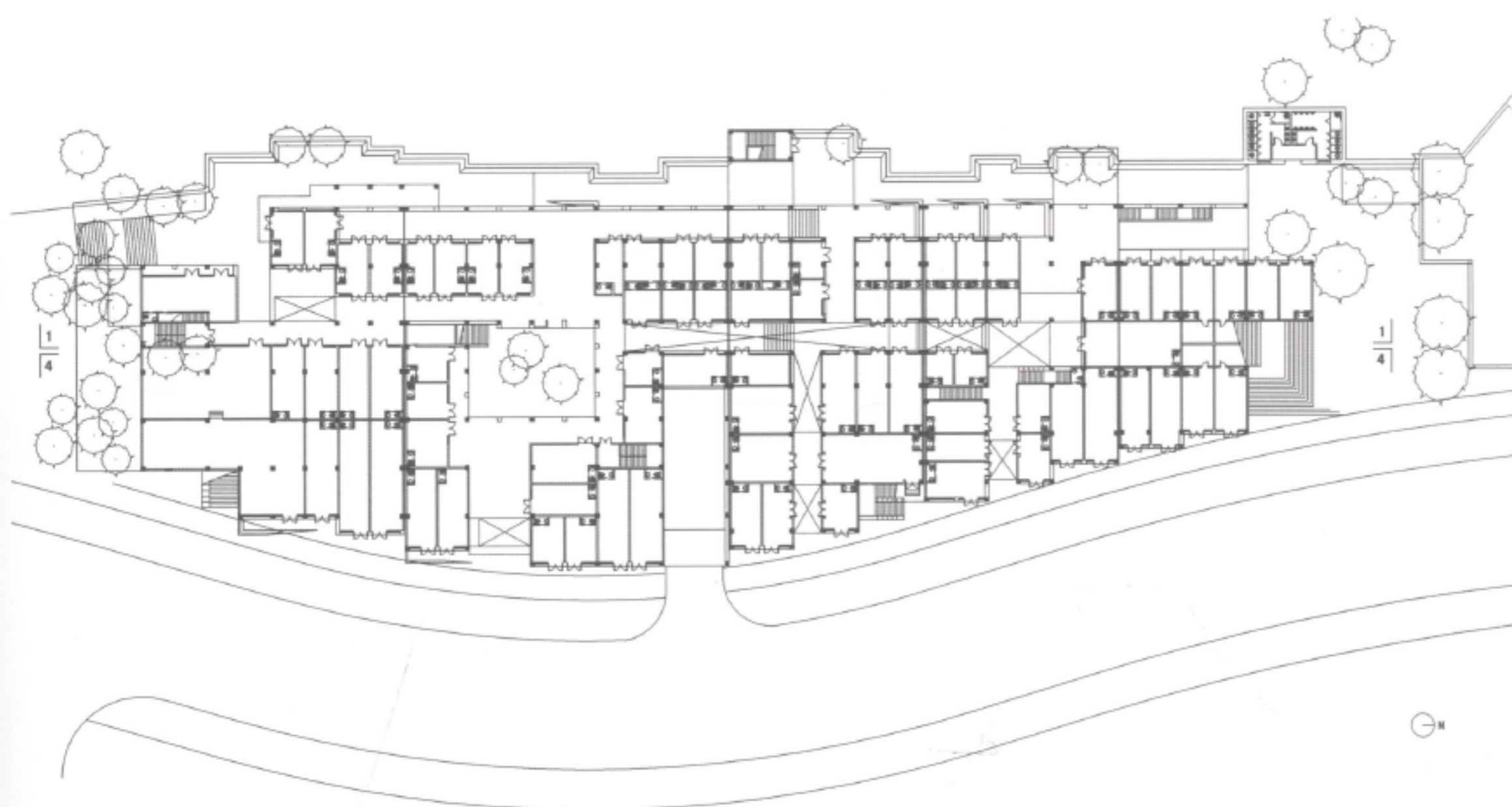


East elevation  
东立面图



Model  
模型图

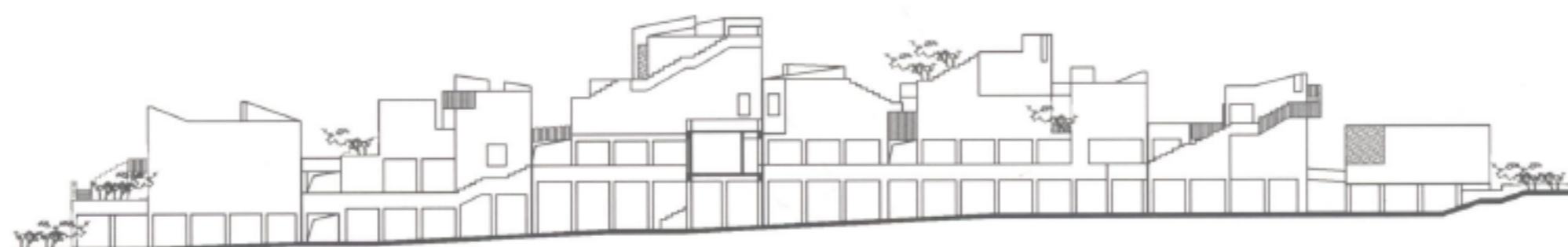




1st floor plan  
一層平面圖



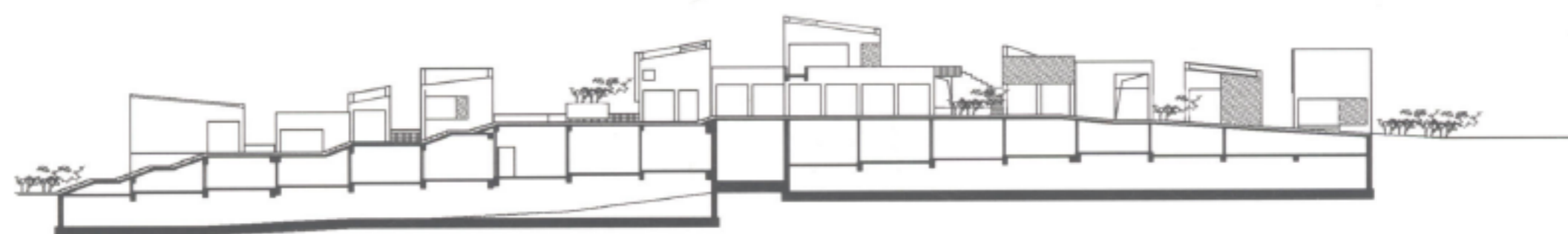
East elevation  
東立面



West elevation  
西立面



1-1 Section  
1-1剖面圖



2-2 Section  
2-2剖面圖