

Santral Istanbul Museum of Contemporary Arts

Istanbul Bilgi University sought for the renovation of Silahtaraga Power Plant, a typical modern industrial setting to be transformed into a museum, recreational and educational centre. Among the various buildings that were dealt with in this context, the two large boiler houses were handled with an interpretation that implied to their new function, in a way of abstraction in the design. The two buildings, that were detached but stood very close to each other to complete the surrounding building mass, were planned in a way proper to the volumetric existence of their older functions, but with a kind of "timeless" approach on surface qualities.

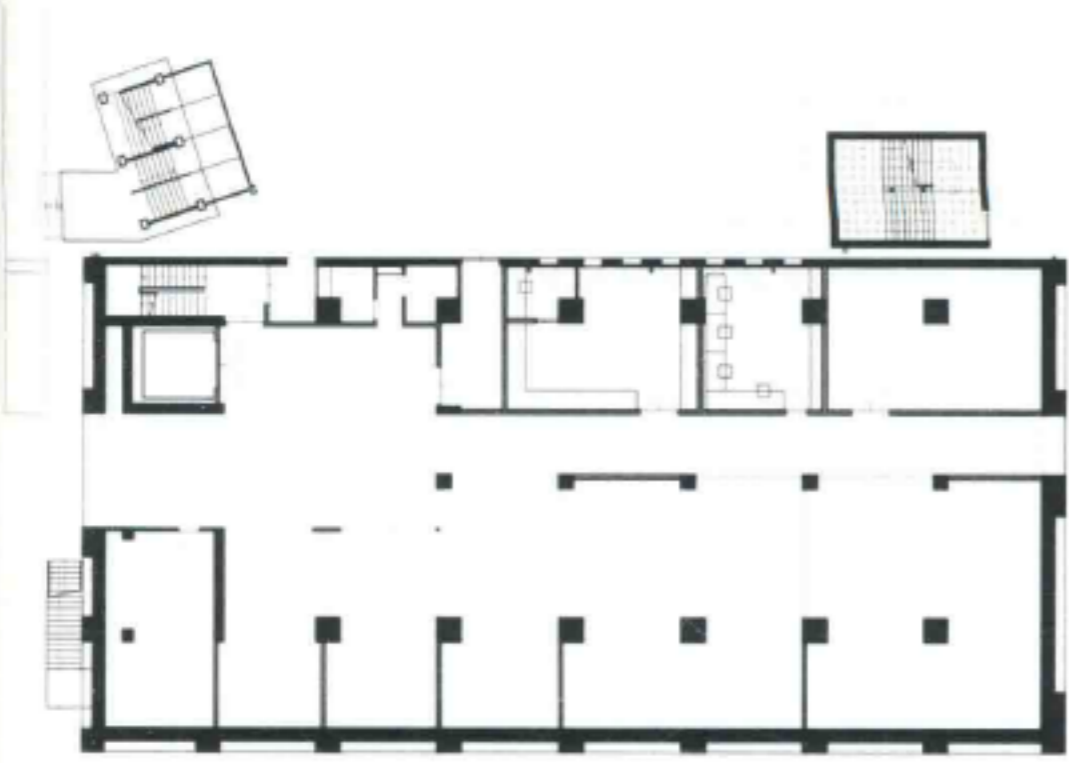
Just like the old buildings, new structures are composed of a dense and heavy inner core and a light, semi-transparent exterior sheathing that covers the core without touching to the possible extend. Instead of the pounced state created by the walls and windows on the surfaces of the old buildings, a metal mesh that this time homogenises the sense of the whole building is simply placed on the concrete base. In this sense, it was considered that the buildings should evoke a kind of insignificance by intervening into the aura of the environment at daytime, but should turn out to be a simple lighthouse with the interior lighting of the museum that makes the metal mesh invisible at night time.

伊斯坦布尔Santral现代艺术博物馆

伊斯坦布尔比尔及大学试图翻新Silahtaraga发电厂，将其改建成一个集博物馆、休闲、教育于一身的中心设施。在发电厂里各种各样的建筑中，两座大型锅炉房的翻新设计十分具有抽象效果，从外形上展示了自身的功能性。这两座建筑虽然各自独立，但是相距很近，它们的设计与其自身的体量特征相符，在外观上体现了一种“永恒”的特点。

与旧建筑改造相同，新建的结构同样拥有厚重感的室内结构和轻盈的半透明外墙。与旧建筑的外墙和窗户所营造的块状结构相反，新建筑的外墙在混凝土底座上添加了一层金属网结构。这样一来，建筑在白天看起来平淡无奇，与周边的建筑无异；但是到了夜晚，博物馆的室内照明模糊金属网，建筑将变身成为一座简洁的灯塔。





1. entrance 2. hall 3. stairs
1. 入口 2. 大厅 3. 楼梯



Photo: EAA-Emre Arolat Architects, nevzat sayın (nsmh)

Architect: EAA-Emre Arolat Architects, nevzat sayın (nsmh)

Cultural

Completion Date: 2007