

## Features 项目亮点

The design well organized the horizontal and vertical spaces: soaring office tower stands in harmony with the commercial annex to provide an flexible urban space.

设计将横向与纵向空间进行了有机的整合，高层写字楼的高耸挺拔与商业裙楼的延绵弧线共同构成了张弛有度的城市空间。

## Key Words 关键词

## Urban Complex in CBD CBD 型城市综合体

# World Urban Square

## 世界城市广场

**Glass Roof 玻璃屋面**

**Skyline 天际弧线**

**Urban Space 城市空间**

Location: Pudong New District, Shanghai, China  
Architectural Design: Shanghai Xingtian Architectural  
Engineering & Design Office  
Land Area: 17,400 m<sup>2</sup>  
Total Floor Area: 62,774 m<sup>2</sup>  
Completion: 2007.06

项目地点: 中国上海市浦东新区  
建筑设计: 上海兴田建筑工程设计事务所  
用地面积: 17 400 m<sup>2</sup>  
总建筑面积: 62 774 m<sup>2</sup>  
竣工时间: 2007 年 6 月

### » Overview

Located in Pudong District of Shanghai City, the site is adjacent to the highways on three sides. It extends 300m long from east to west to have three city interfaces. Around the square, the completed buildings stand nearby the roads, serving as tall and thick screens for the passers-by. By analyzing the disadvantages of the site, the architects designed a wide pedestrian square at the intersections, in which the landscape and sunken square will make the urban space become relaxed, friendly and attractive for future development.

### » 项目概况

项目位于上海市浦东区，基地三面紧邻快速车道，东西绵延 300 多米，与城市形成了三个接触面。周边已建成的建筑紧邻道路，在行人身边形成了一道道高大厚实的屏障。建筑师意识到这种空间环境的不足，在首尾邻近两个道路交叉口处作了退让，形成了宽阔的步行广场，通过景观、下沉广场的布置，放松了十字路口城市空间的压迫感，不仅营造了会呼吸的城市空间以吸引人流汇聚，更以友好的姿态延续了城市空间的弹性发展。

### » Planning and Architectural Design

The structure is composed of a commercial annex and an office tower. Standing near to a high-rise commercial building in the northeast, the tower will not shadow the residential area to its northwest. And at the same time, it separates the office entrance from the commercial entrance reasonably, to shape a continuous commercial space with the auxiliary office space set behind. For the office building, a gentle curve appears at the joint of the east and south facades, and



上海广播电视台  
东方卫视

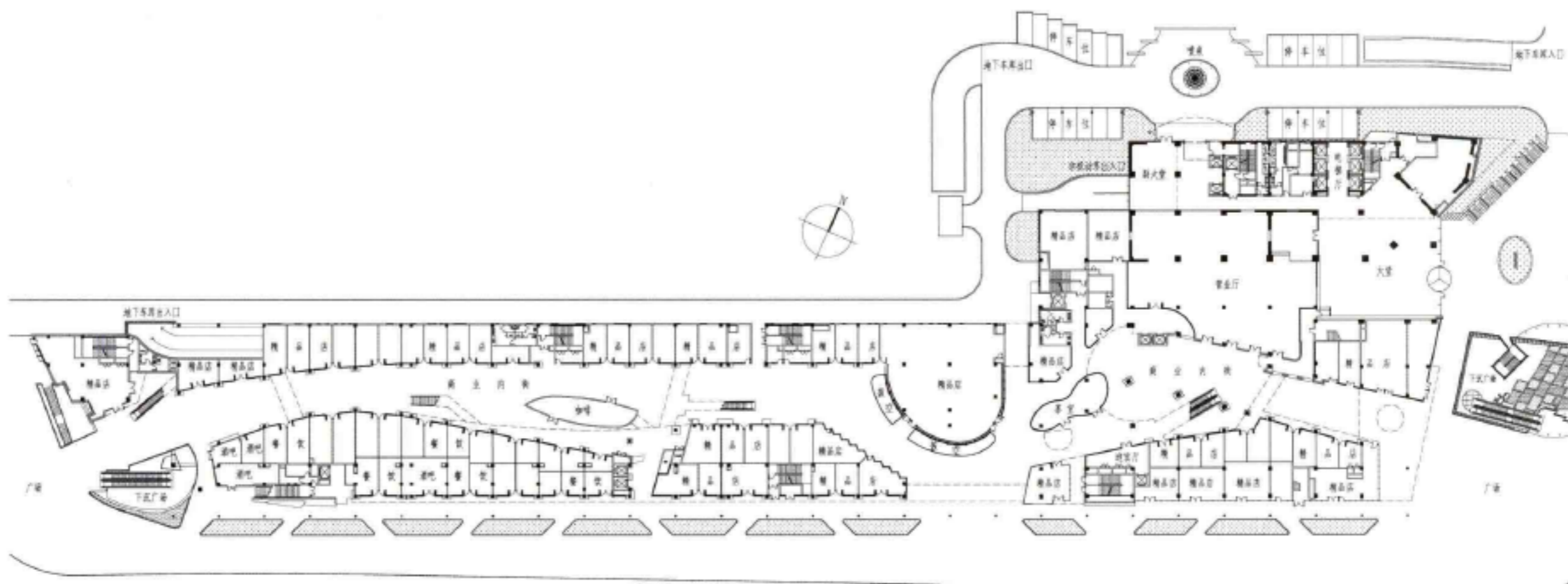
上海广播电视台  
东方卫视

大拜三  
大拜三

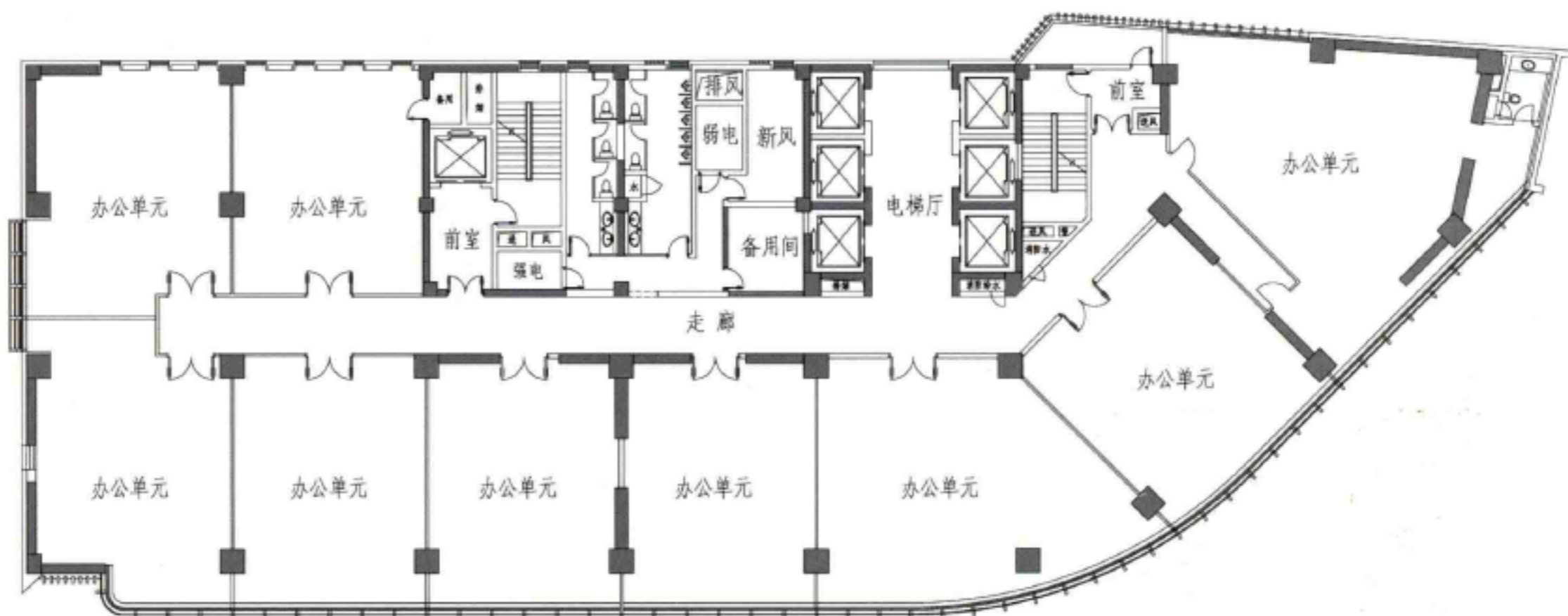


Site Plan 总平面图

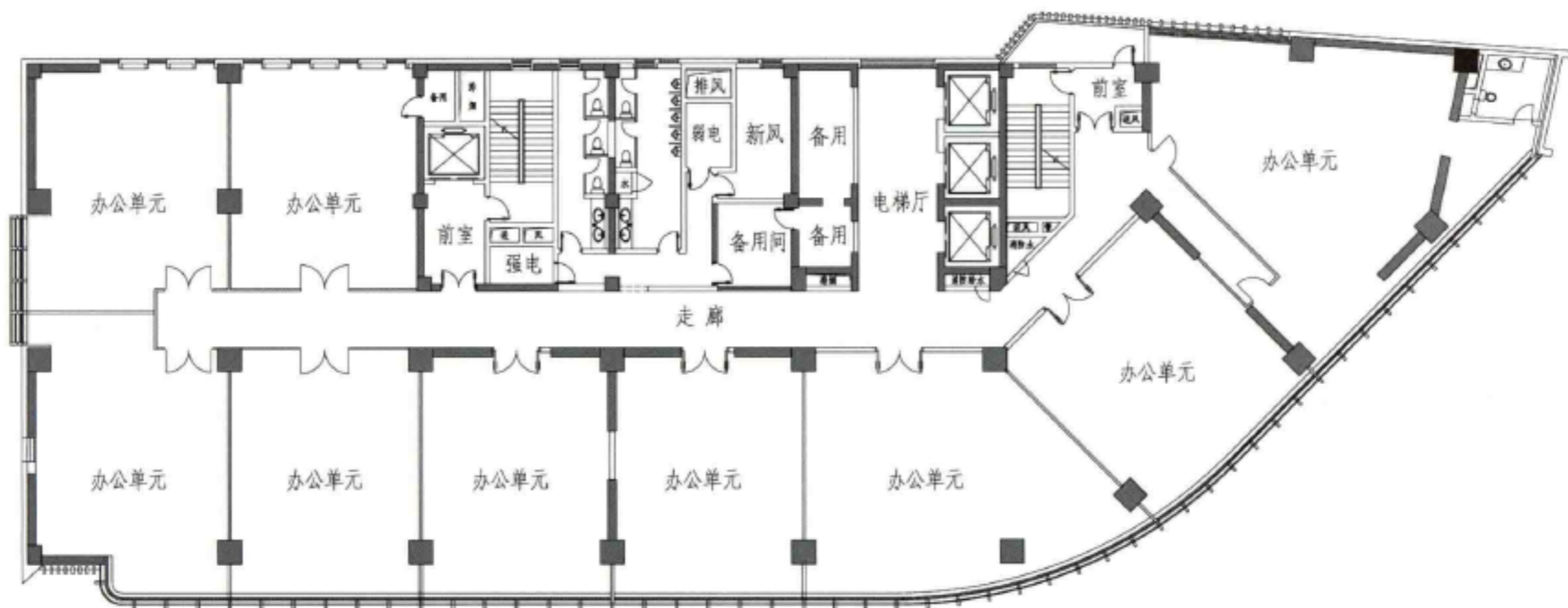




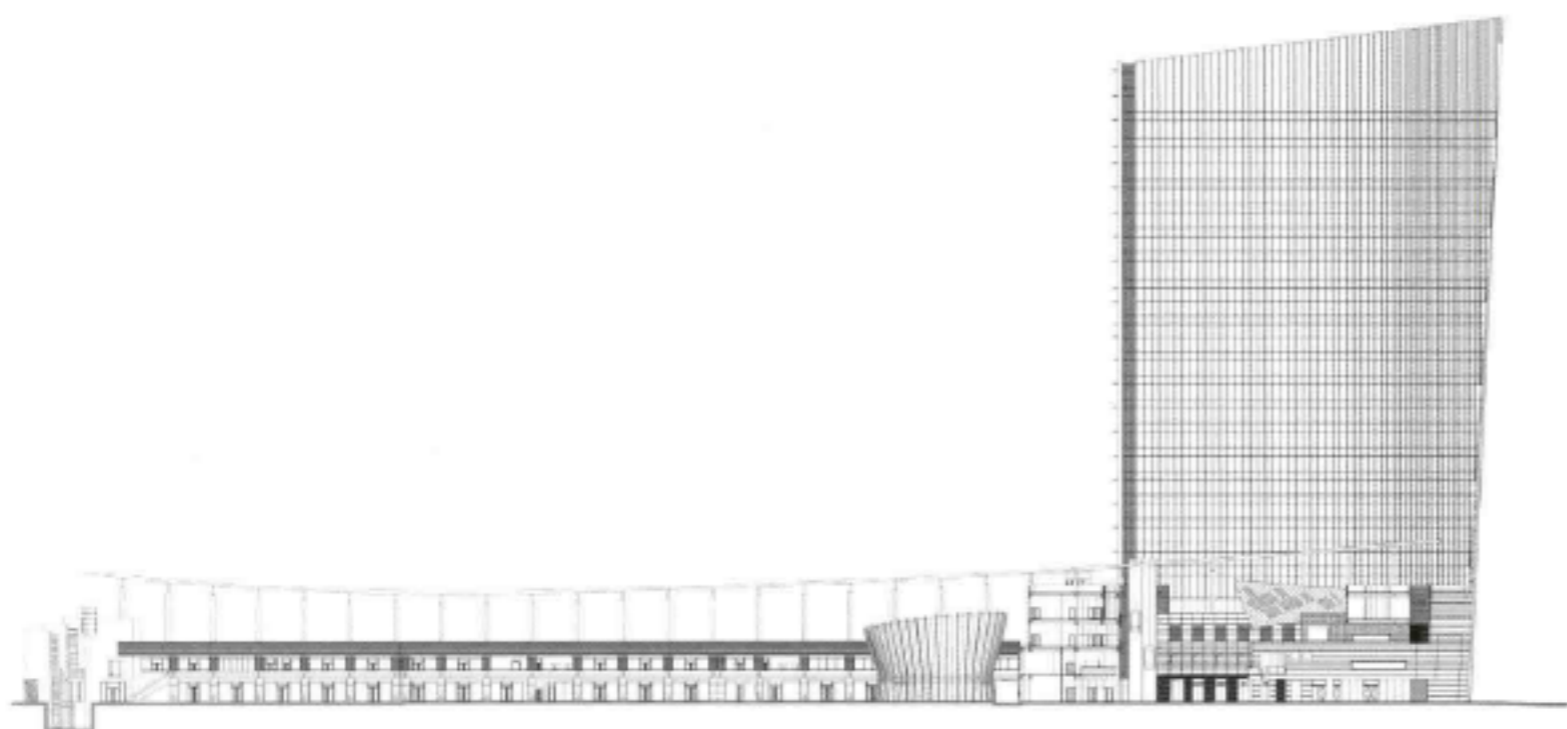
Floor Plan 1 平面图 1



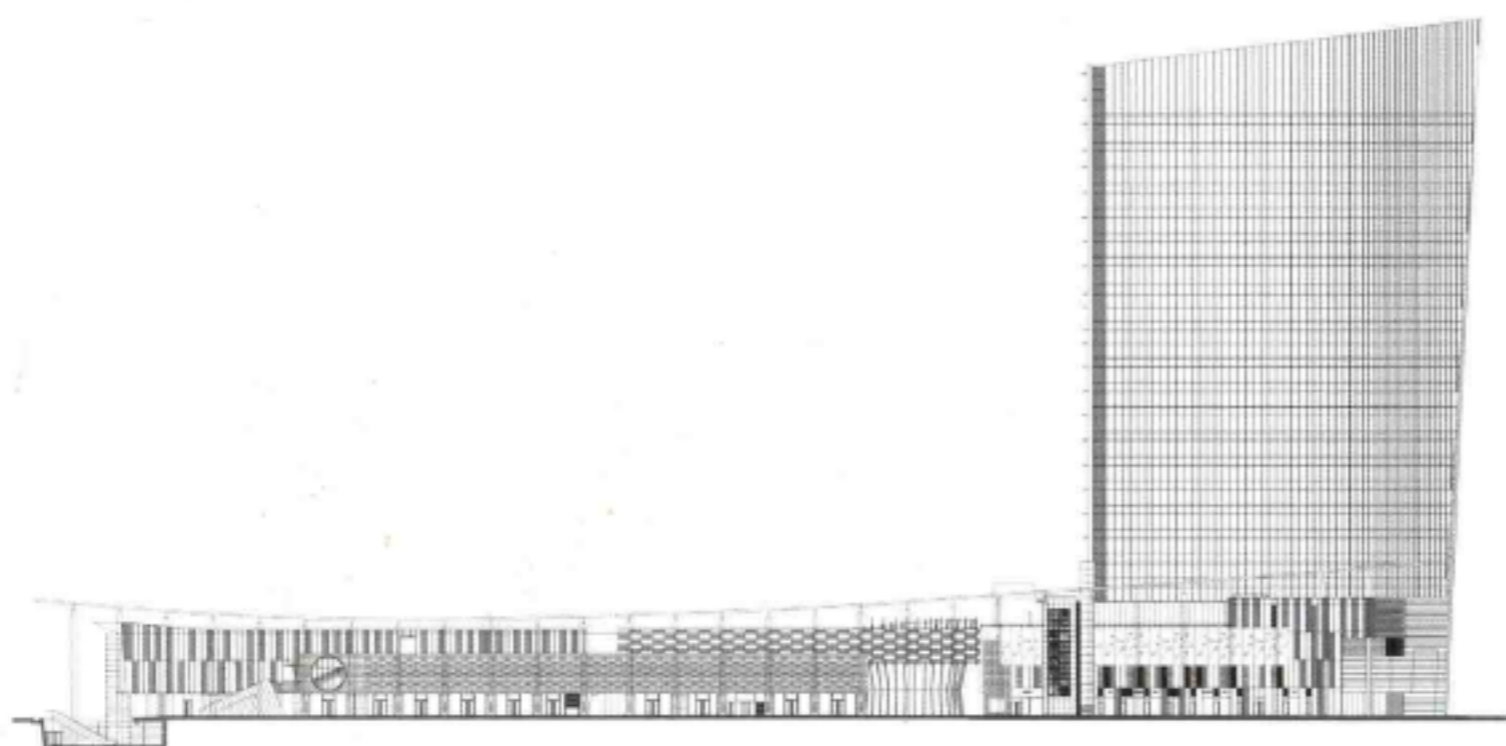
Floor Plan 2 平面图 2



Floor Plan 3 平面图 3



Elevation 1 立面图 1



Elevation 2 立面图 2

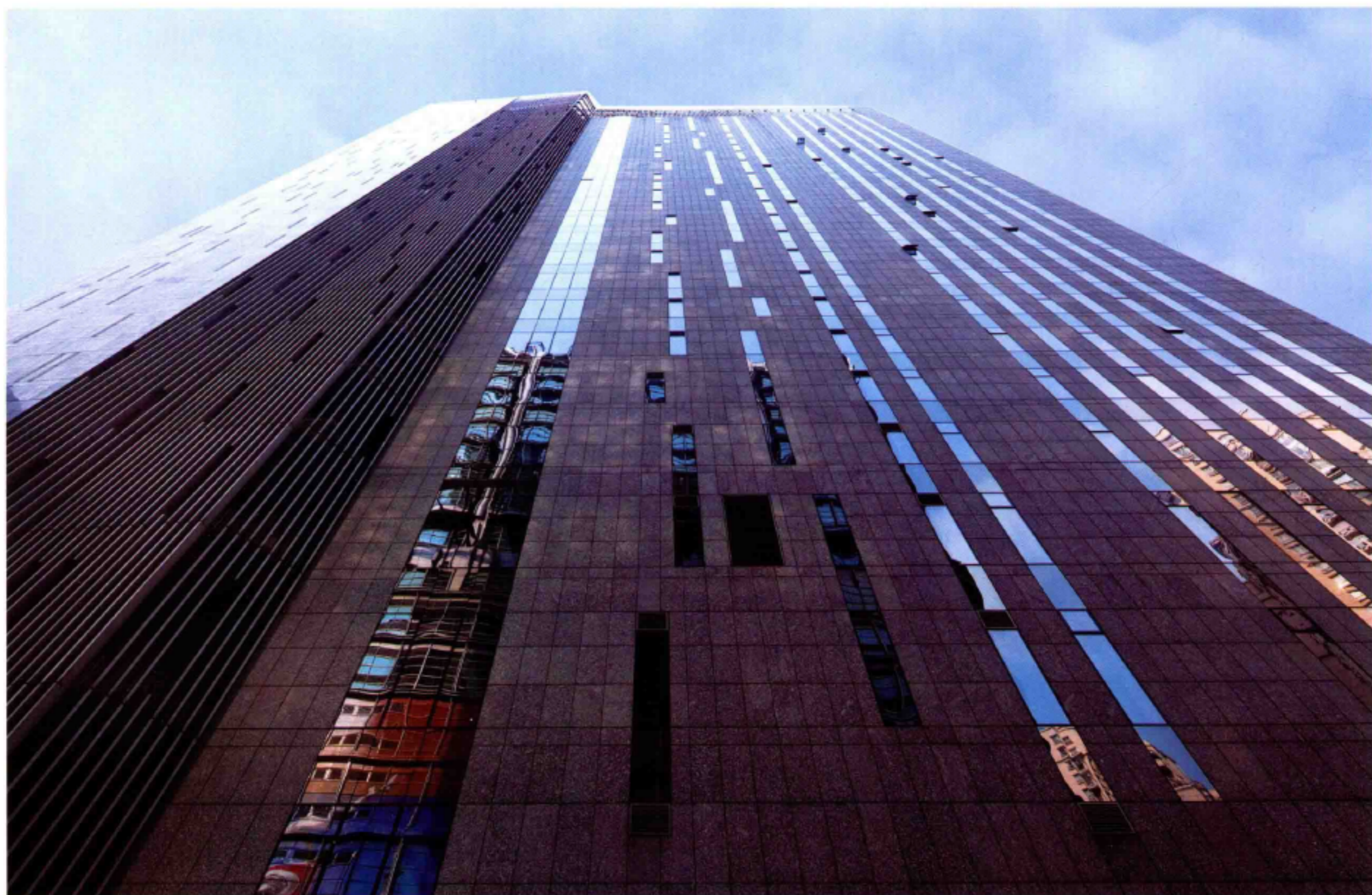
the spaces at the intersections appear to be elegant and friendly, continuing the round corner design of the existing commercial building in the north and echoing with the arc-shaped wall of the YAOHAN building in the east. In this way, it well extends the existing urban space and keeps a harmonious environment.

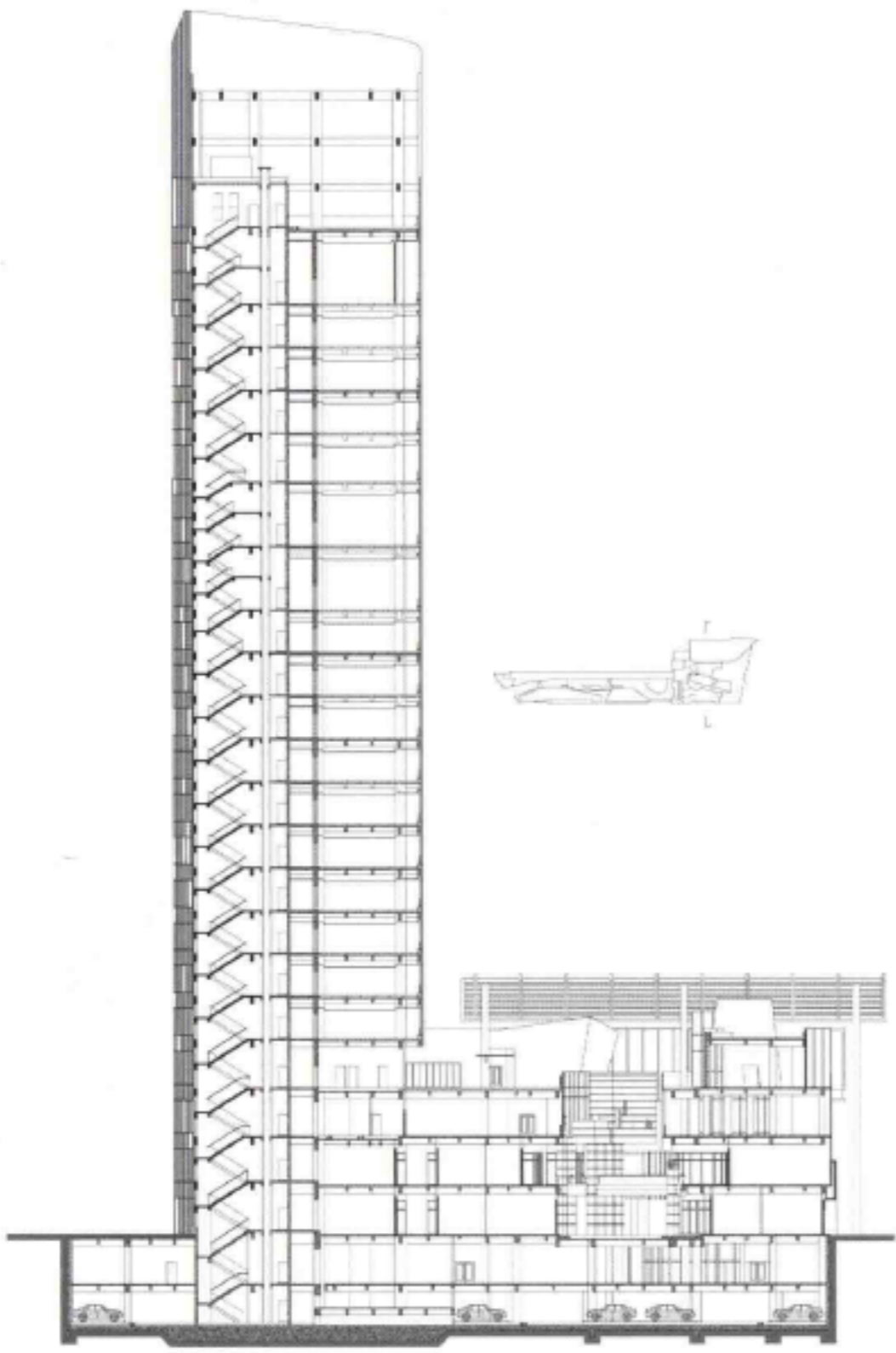
Curved roof of the annex shapes a beautiful skyline and is in dialogue with the high-rise office. Under the roof, half-open space is a all-weather pedestrain street which is sheltered from the sun and rain. The glass roof rises higher at two ends to speed drainage in the rainy days and remind people of the traditional roof style.

## » 规划布局及建筑设计

建筑由水平向的商业裙楼和竖向的高层写字楼组成。高层写字楼贴近东北角基地外的高层商业建筑，既避免了对基地西北侧住宅区的日照影响，同时也合理地将办公入口与商业入口分开，办公楼后置，使商业空间连贯完整。高层写字楼在东、南两面的交界处柔和地抹出一道弧面，在道路交叉口处显得大方、友好，延续了北侧原有高层商业楼的圆角处理，又与东面的八百伴商业建筑弧形拱券墙体相呼应，巧妙地续写了既有城市空间，加强了空间的整体性。

商业裙楼之上，一片巨大的屋檐创造了一道优美的天际弧线，整合了建筑的形体关系，并与高层部分的设计语言取得统一。屋檐下的半开放空间，形成了全天候步行商业街，既可阻挡炎热的太阳，又可遮蔽风雨，两头略微抬起的玻璃屋面加快雨天排水，自然地形成了充满传统屋面起翘韵味的联想。





Sectional Drawing 剖面图

