

Site plan
總平圖

Project team: Juergen Mayer H., Hans Schneider, Wilko Hoffmann, Andre Santer, Sebastian Finckh, Marta Ramirez Iglesias, Georg Schmidhals, Marcus Blum
 Competition team: Juergen Mayer H., Jan Christoph Stockebrand, Marcus Blum, Klaus Küppers, Hans Schneider
 Invited competition 2005, 1st Prize
 Architect on site: Imhotep, Donachie und Blomeyer
 Structural engineer: Lydia Thiesemann, CBP
 Building services: Energiehaus, Sineplan
 Light engineer: Andres Lichtplanung
 Landscape architects: Breimann & Bruun
 Model: Werk5
 Client: Cogiton Projekt Alster GmbH, Hamburg
 Project period: 2005-2007
 Completion: 2007

項目團隊: Juergen Mayer H., Hans Schneider, Wilko Hoffmann, Andre Santer, Sebastian Finckh, Marta Ramirez Iglesias, Georg Schmidhals, Marcus Blum
 競賽團隊: Juergen Mayer H., Jan Christoph Stockebrand, Marcus Blum, Klaus Küppers, Hans Schneider
 邀請競賽 2005年一等獎
 現場建築師: Imhotep, Donachie 及 Blomeyer
 結構工程師: Lydia Thiesemann, CBP
 建築服務: Energiehaus, Sineplan
 燈光工程師: Andres Lichtplanung
 景觀設計師: Breimann & Bruun
 模型: Werk5
 客戶: Cogiton Projekt Alster GmbH, Hamburg
 項目時間: 2005年—2007年
 完工日期: 2007年

ADA 1 - An der Alster 1, Office Complex , Hamburg, Germany

ADA 1 — An der Alster 1, 德國漢堡綜合辦公大樓

Design company: J. MARER H'S Studio

設計單位: J. MARER H'S Studio

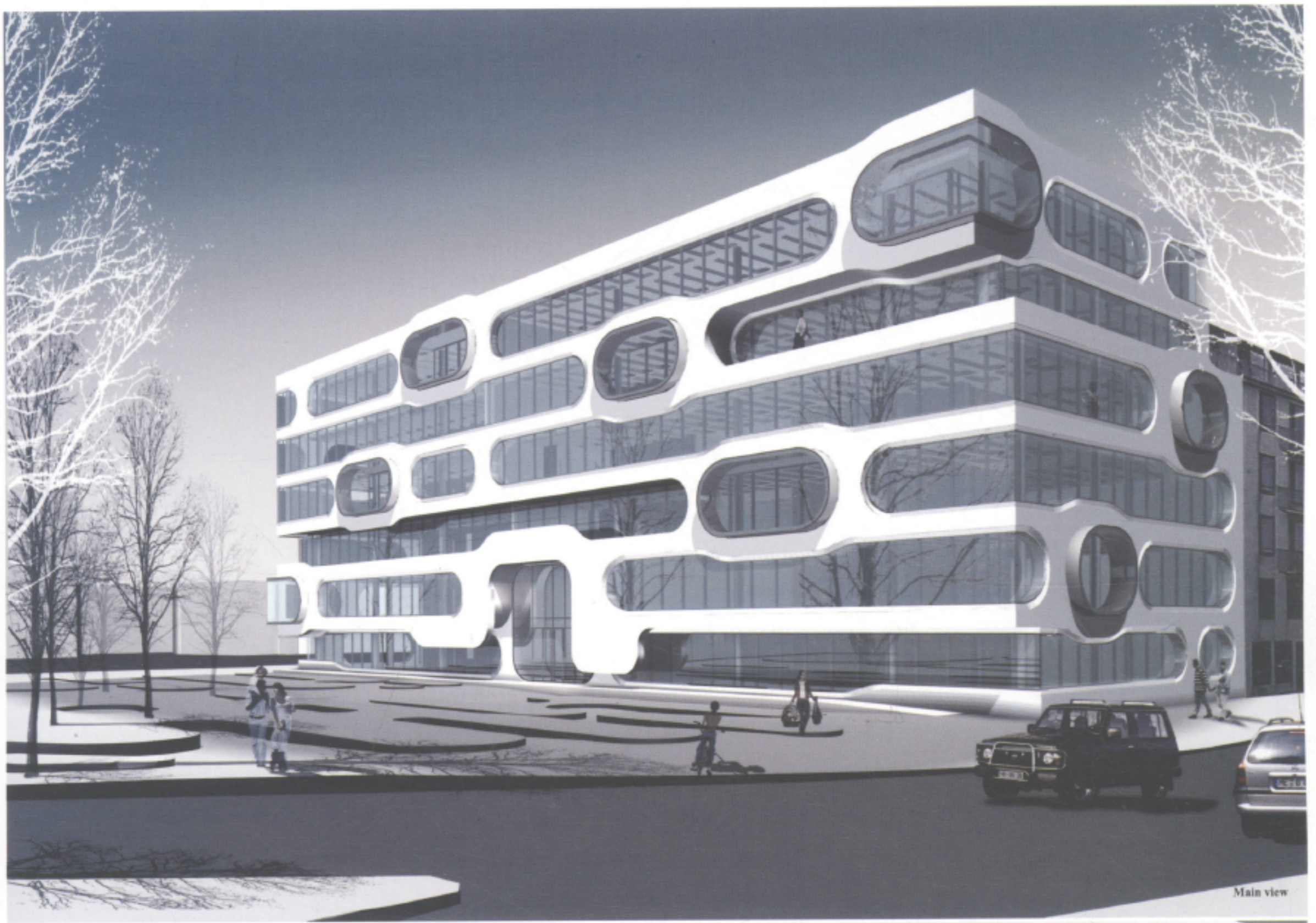
The building site is directly located at the intersection between the lively downtown of Hamburg and its urban landscape rich of water and old trees. It is the transition from town to nature, and the gate building to the busy inner city.

The horizontal striped facade with its floating eyes celebrates the view onto this unique context. In front of the building lies a public park which continues the design strategy of the facade into the landscape. The "eyes" in the facade and the platforms in the park form places to meet and contemplate. The office spaces serve both a generic spatial layout and specific moments related to the "eyes". Large spans provide various possibilities of office layouts in combination with balconies and climatically tempered outdoor spaces of the "eyes".

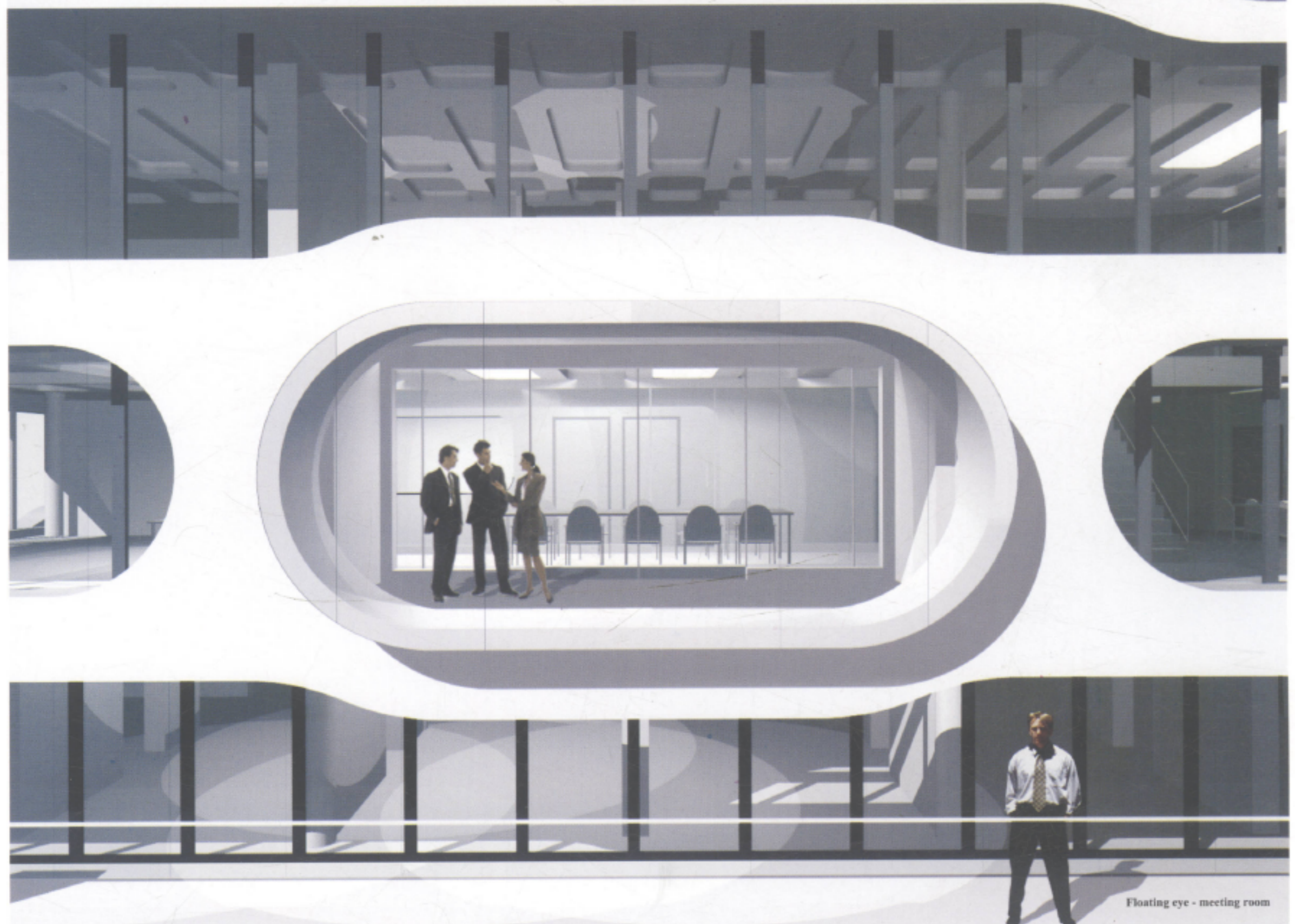
The office building "An der Alster 1" links interior and exterior spaces to the public park in front of the building and to the city context of Hamburg, becoming the new anchor piece of the prestigious Aussenalster waterfront.

建築基地恰好位於漢堡繁華的市中心和到處是水和古老樹木的城市景觀的交叉點。它是城鎮和自然之間的過渡，是通向繁華市中心的大門式建築。

帶有漂浮式“眼睛”的水平條紋立面體現了這一獨特背景景觀。大樓前面有一座公園，公園將立面設計方法融入景觀的設計。立面上所謂的眼睛和公園裏的平臺形成了聚會和沉思的場所。辦公空間既是作為一般的空間布局，也是與“眼睛”有關的特殊時刻。大跨度為辦公布局與陽臺和受氣候調節的“眼睛”的戶外空間的布局提供了各種可能性。辦公大樓“An der Alster 1”把室內和室外空間與辦公樓前的公園以及漢堡城市背景連接在一起，成了久負盛名的外阿斯特湖水域的新核心。

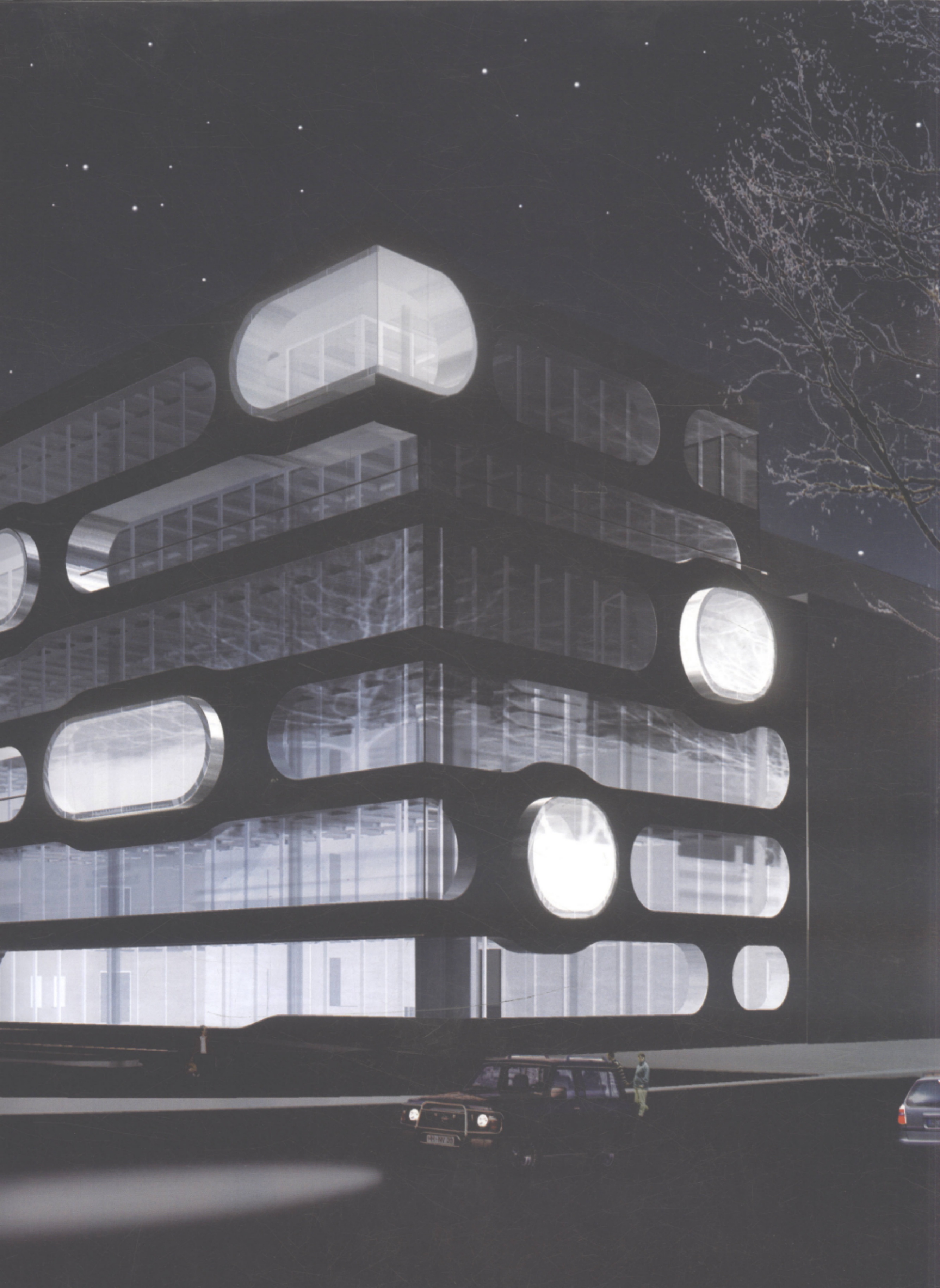


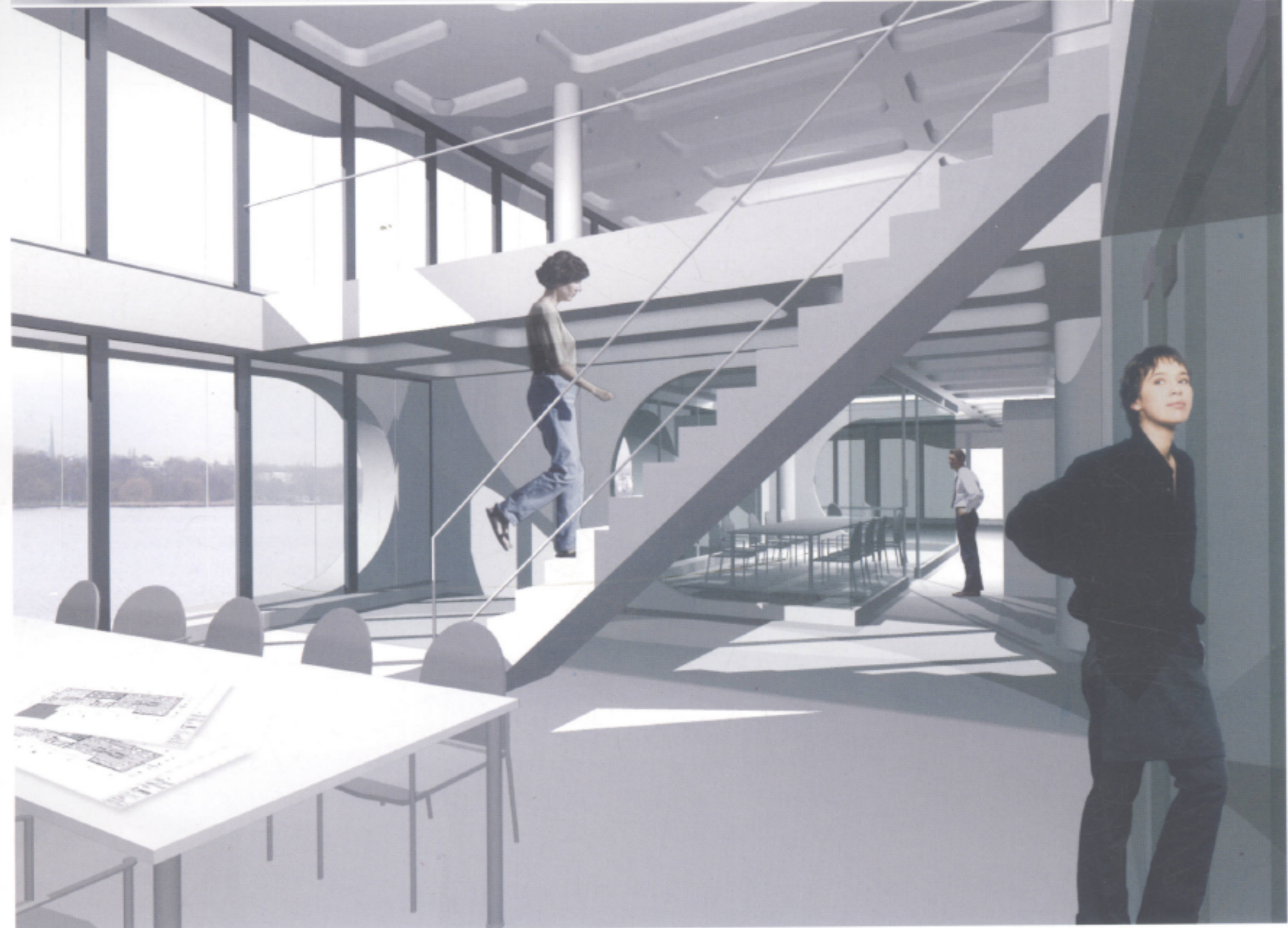
Main view



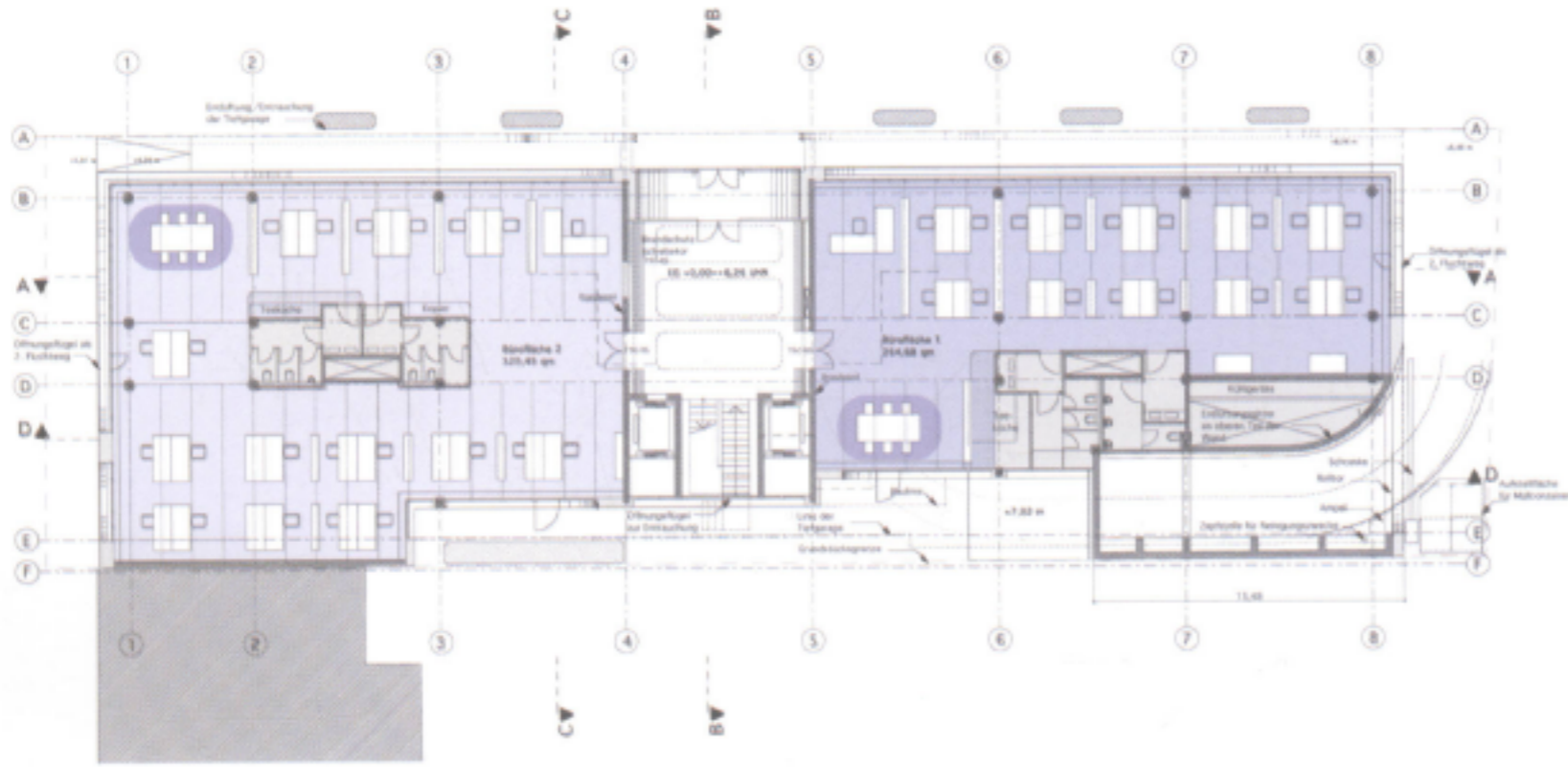
Floating eye - meeting room



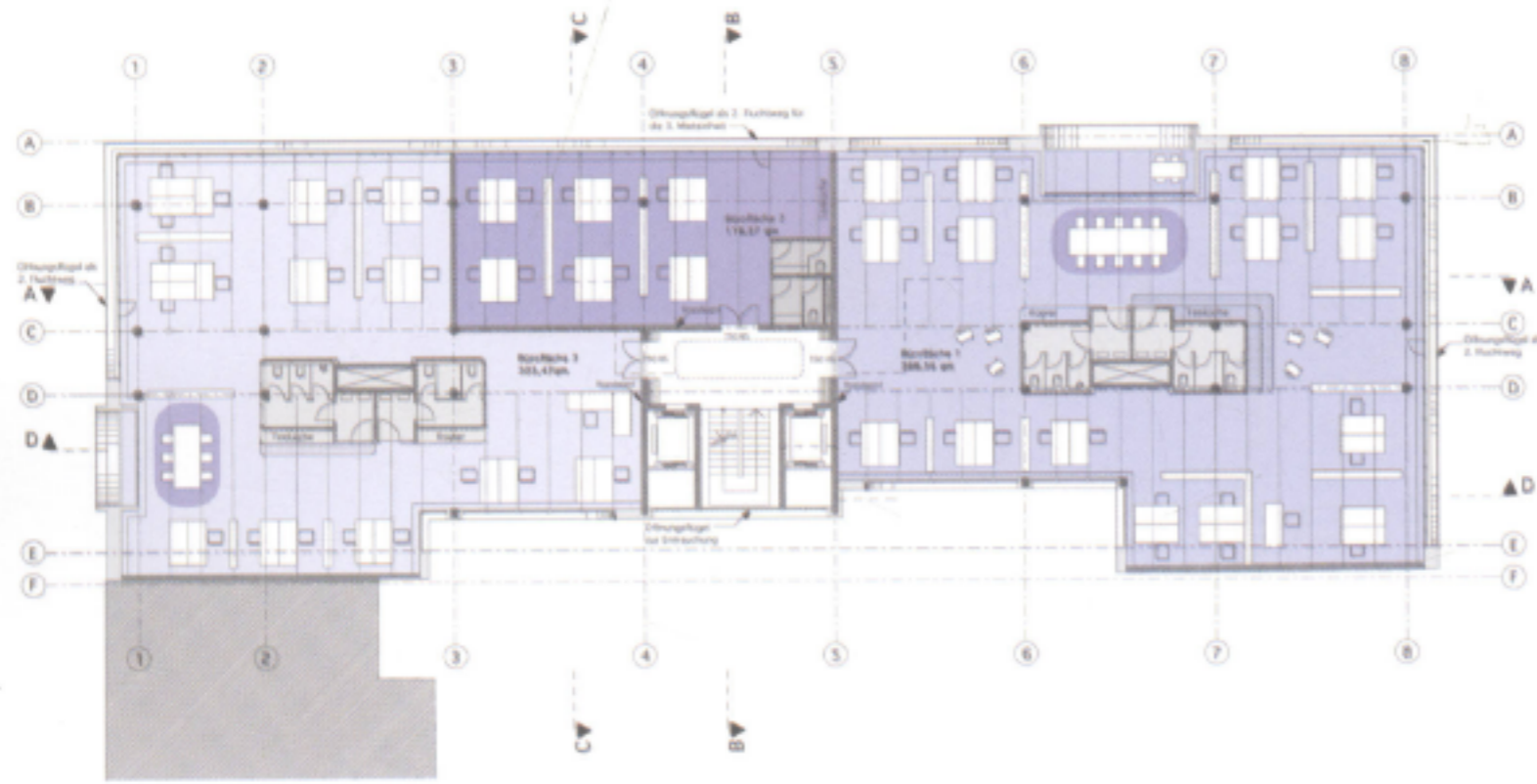




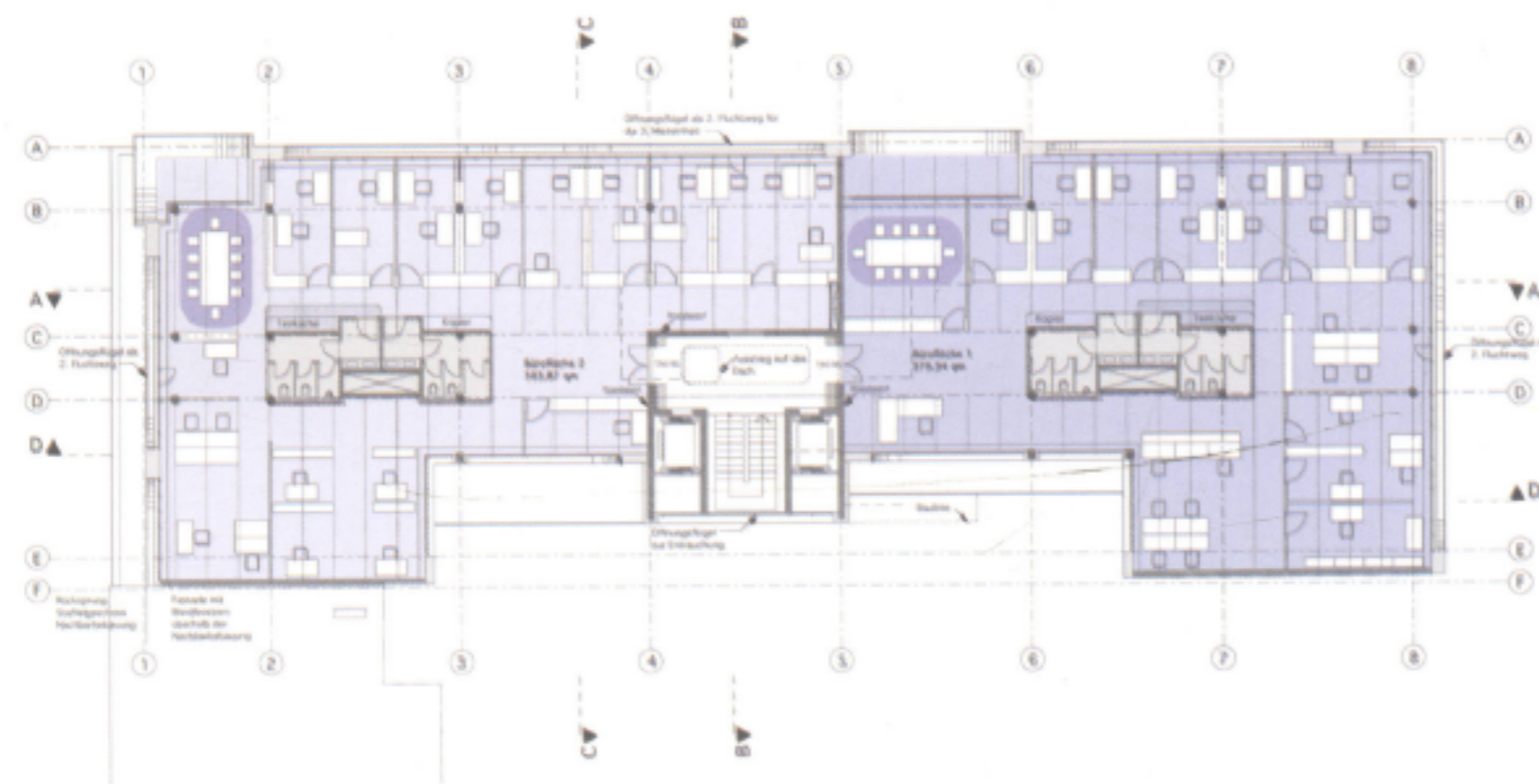




Ground floor plan
 底层平面图



Third floor plan
 三层平面图



Fifth floor plan
 五层平面图

