

前海国际会议中心，深圳，中国

Qianhai International Convention Centre, Shenzhen, China, 2014

建筑设计：肖诚
Architect: XIAO Cheng

城市客厅是本设计的基本理念。在此基础上，以开放性、兼容性、公众参与性作为设计原则。高效的组织空间和利用在本项目中也尤为重要。占地2000m²的“大屋檐”，位于大堂前面的广场。这是一个可以激发一系列公共活动的场所。在建筑内部，L型布局的大堂和侧厅分别与不同的功能分区或独立或相互关联，它们可以有效地实现空间的灵活性，并有效地节省资源。建筑外形的概念来自于“钻石”——即隐藏的宝藏在被开挖抛光后而变得闪亮。抛光的部分玻璃幕墙所表达的“钻石”是不同的角度。“石头”则是反映在黑暗铝幕墙与钻石的纹理。该项目建成之后，有300多场不同形式和大小活动在这里举行。在操作方面，各种各样的节能设计方法使建筑物的能源消耗大大低于大多数的大型会展建筑。它也成为人们日常休息、散步及交流的地方。□

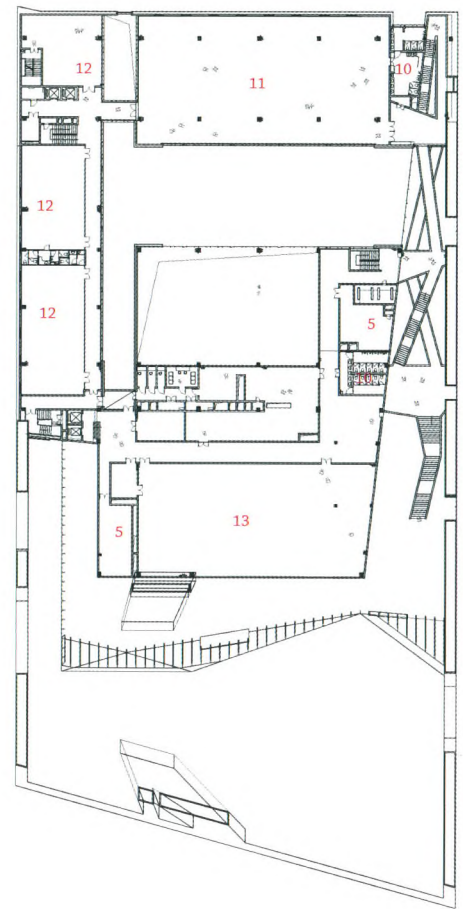
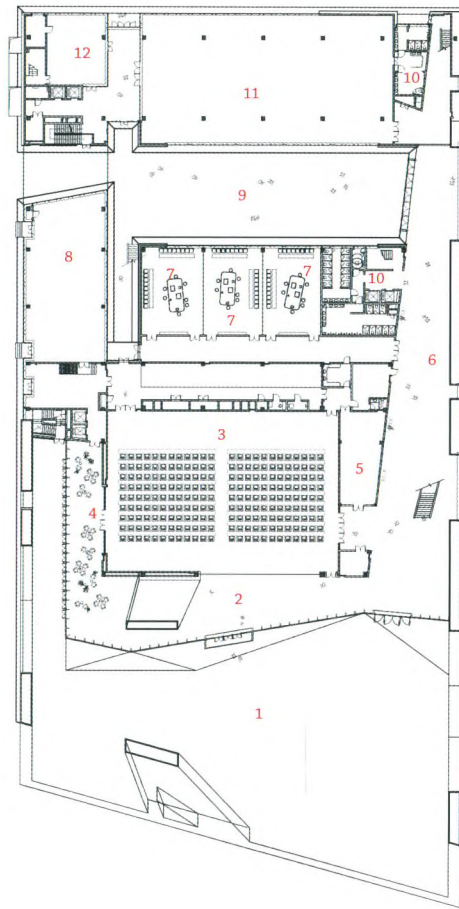


"Urban Lobby" is the primary concept of the design, based on which openness, compatibility and public participation become the most important principle. At the same time, high efficiency of space organization and utilization is also very important.

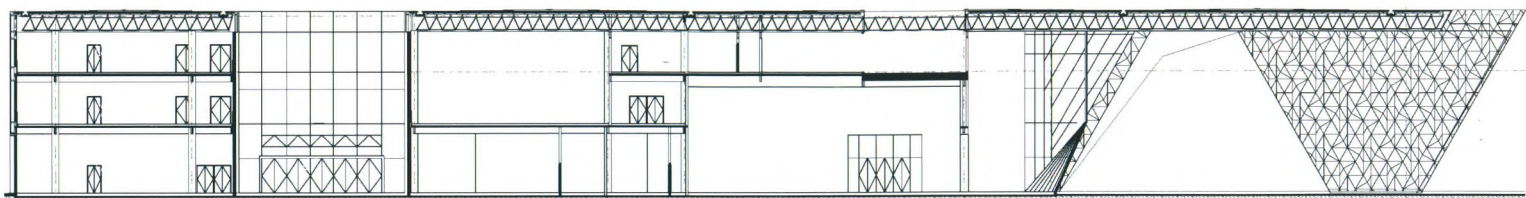
A "big eave" covering an area of 2,000 square metres is located between the lobby and the square in front of the building. It is a unique place to inspire some public activities such as outdoor concert, fashion show or even weekend market. Inside the building, L-shaped layout of the lobby and the side hall are respectively associated with the different function-regions either independent or interrelated, which can realize the flexibility and can save energy effectively.

The concept of the image comes from "diamond" - hidden treasure in a large boulder, and becomes shiny after excavation and being polished. The polishing part of "diamond" is expressed by the glass curtain wall of different angles. "Stone" is reflected by dark aluminium curtain wall with diamond texture.

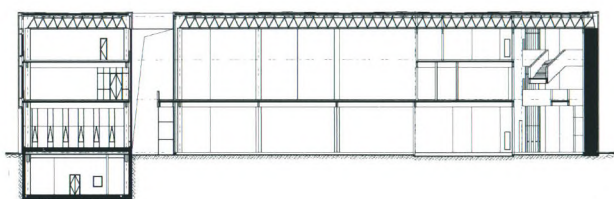
Within the year after completion, there were more than 300 activities of different forms and sizes held in this building. In terms of operations, a variety of energy saving design methods makes the energy consumption of the building much lower than most of the large-scale convention buildings. It also turns itself into a place for people to take a rest after daily work, to walk, and have spontaneous communication.□



- 1 外景/Exterior view
2 首层平面/Ground floor plan
3 三层平面/Second floor plan
- | | | |
|-------------------------------|--------------------|-----------------------|
| 1-大屋檐下空间/Space under big eave | 6-边厅/Side hall | 10-卫生间/Toilet |
| 2-大厅/Lobby | 7-会议室/Meeting room | 11-交易室/Trading office |
| 3-多功能厅/Multi-functional hall | 8-厨房/Kitchen | 12-办公室/Office |
| 4-咖啡厅/Cafe | 9-庭院/Courtyard | 13-餐厅/Dinning room |
| 5-服务间/Service room | | |



4



5

项目信息/Credits and Data

设计团队/Design Team: 凌峥, 王静/LING Zheng, WANG Jing

建筑面积/Floor Area: 12,861m²

建成时间/Completion: 2014.12

摄影/Photos: 肖诚, 张超/XIAO Cheng, ZHANG Chao



6

4.5 剖面/Sections

6 外景/Exterior view