

University Mozarteum

The University was named after Wolfgang Amadeus Mozart and is a worldwide acknowledged training Centre for artists now for more than 160 years. Situated directly next to the Mirabell Gardens in Salzburg, the Mozarteum is part of the inner city ambience.

A stony solitaire is situated at the entrance and the Mirabellplatz Square is visually being led into the building. Entering the doorway of the hall is a special moment created by illumination effects through the floor. The hall is illuminated with down lighter from the shed-roof-construction. The lights are being arranged in bunches and can be activated as light isles in between which the students and concert guests might move animated by the light. A perron leads to the institute's areas. Open-access balconies with integrated light channels serve as attractive lounge zones. The walls appear to glow from cherry tree wood and therewith create a warm and festive character.

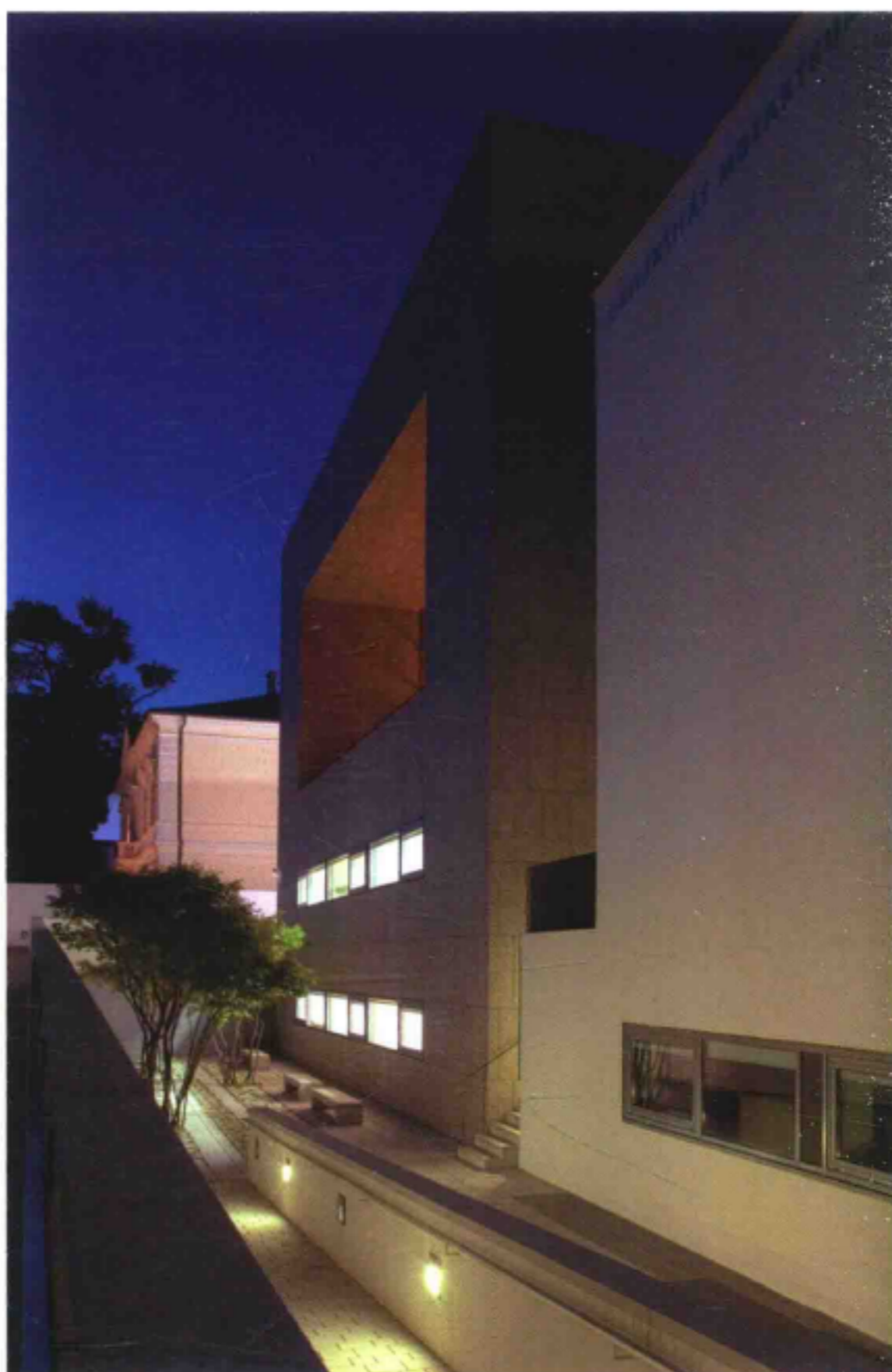
To make this outer illumination more visible, the façade of the solitaire is being shaded. The remaining three walls create an edged and bright solitaire. The light concept in context with the building makes a varied but calm and reserved impression. It wants to inspire and give room to the creativity of the occupants.

莫扎特大学

160多年来，莫扎特大学一直作为世界知名艺术培训中心，其名字源于著名音乐大师莫扎特。大学与米拉贝尔花园毗邻，已成为整座城市景观的一部分。

巨大的石雕坐落在入口处，莫扎特广场的风光“涌入”建筑内。走进大厅门口便会充分感觉到灯光营造的独特氛围——灯饰从屋顶上悬垂下来，一簇簇排列着，形成一座座“光岛”。经过一级台阶，便可达到其他区域，开放式的阳台可用作休息区，墙壁在灯光的照射下散发出温暖而喜悦的气息。

为增强建筑外部照明可见性，设计师专门将石墙一侧遮盖起来，另外三面墙壁则更加突显明亮感。独特的照明理念赋予整幢建筑淡雅沉稳的特色。



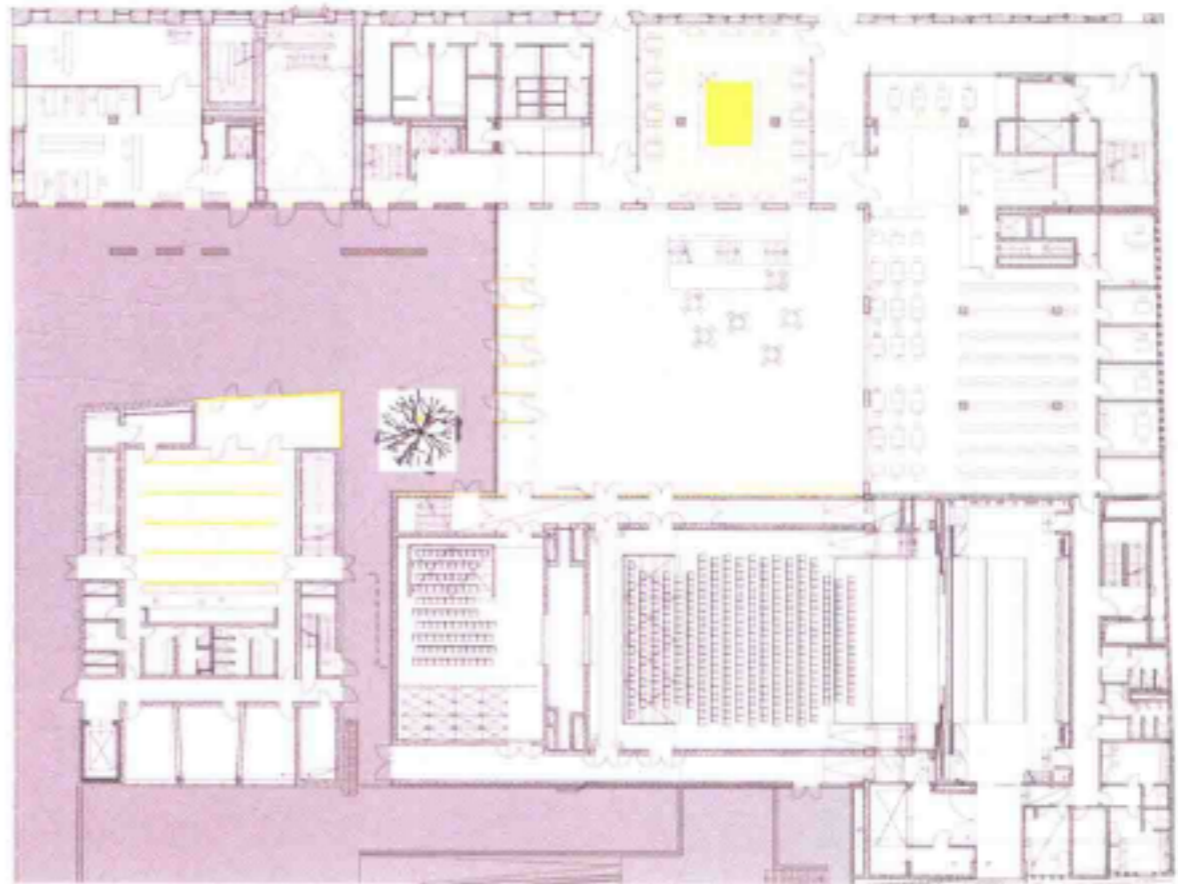
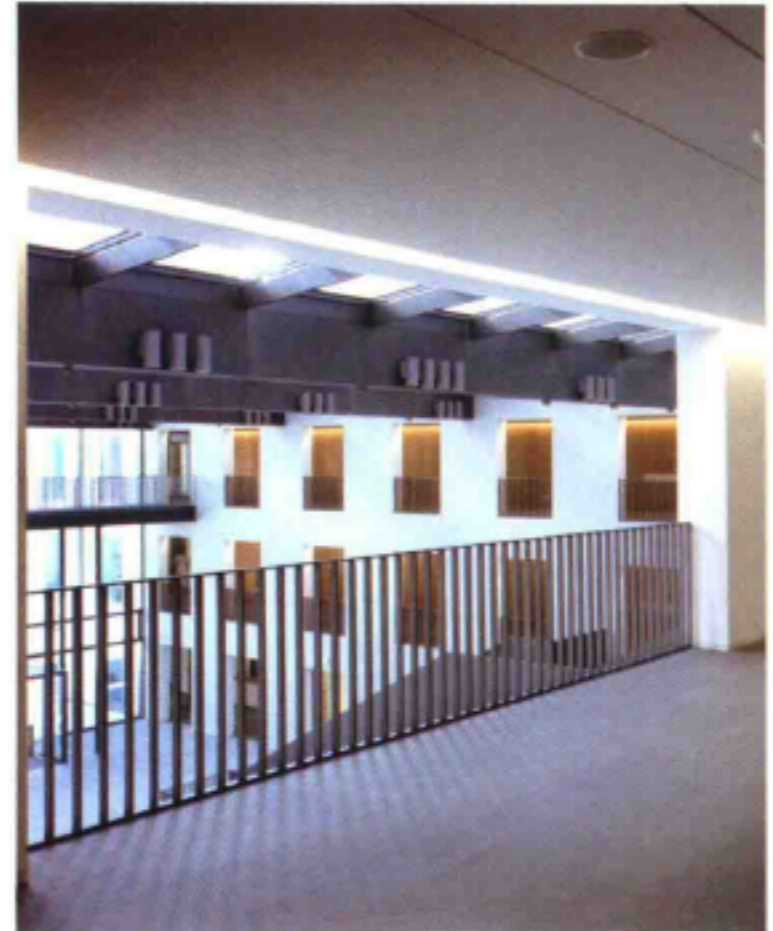


Photo: Andrew Phelps

Educational

Completion Date: 2006

Architect: Rechenauer Architects, Munich
Lighting Design: Gabriele Allendorf - light identity, Munich

