

View from Sandford 从桑福德路上看建筑

Multi-Purpose Hall, Sandford Park School

The Multi-Purpose Hall creates a new identity for the school from Sandford Road, advantageously reinforcing the school within its suburban context of Ranelagh. Located at the middle ground between the gate lodge and school house, it allowed for the insertion of a contemporary architectural volume to mediate between the different generations of school appendages.

The brief was to provide a multi-purpose hall for use by various school departments including sport; music; recitals, theatrical performance, examinations, assembly, and ancillary presentations. The space was for an equivalent Department of Education and Science 406-square-metre sports hall allowing for three badminton / single basketball court, with ancillary storage and changing facilities. Due to the context and functions, the quality of both internal and external acoustics was critical. Noise penetration onto neighbouring properties required an increase in the mass of internal walls and roof, and reverberation times internally were reduced through the softening of internal finishes.

Externally the expression of materiality has been reduced to enhance the juxtaposition between the hall and the immediate context. The use of a fibre cement cladding meant the entire form could be homogeneously wrapped with only the entrance screen and Profilit glazing of the hall being inserted into the skin. A visual connection is created between the footpath and the hall through the suppression of the internal floor level. It is through this separation of ground that an enhanced spatial arrangement is made between the external school environment and the new hall.

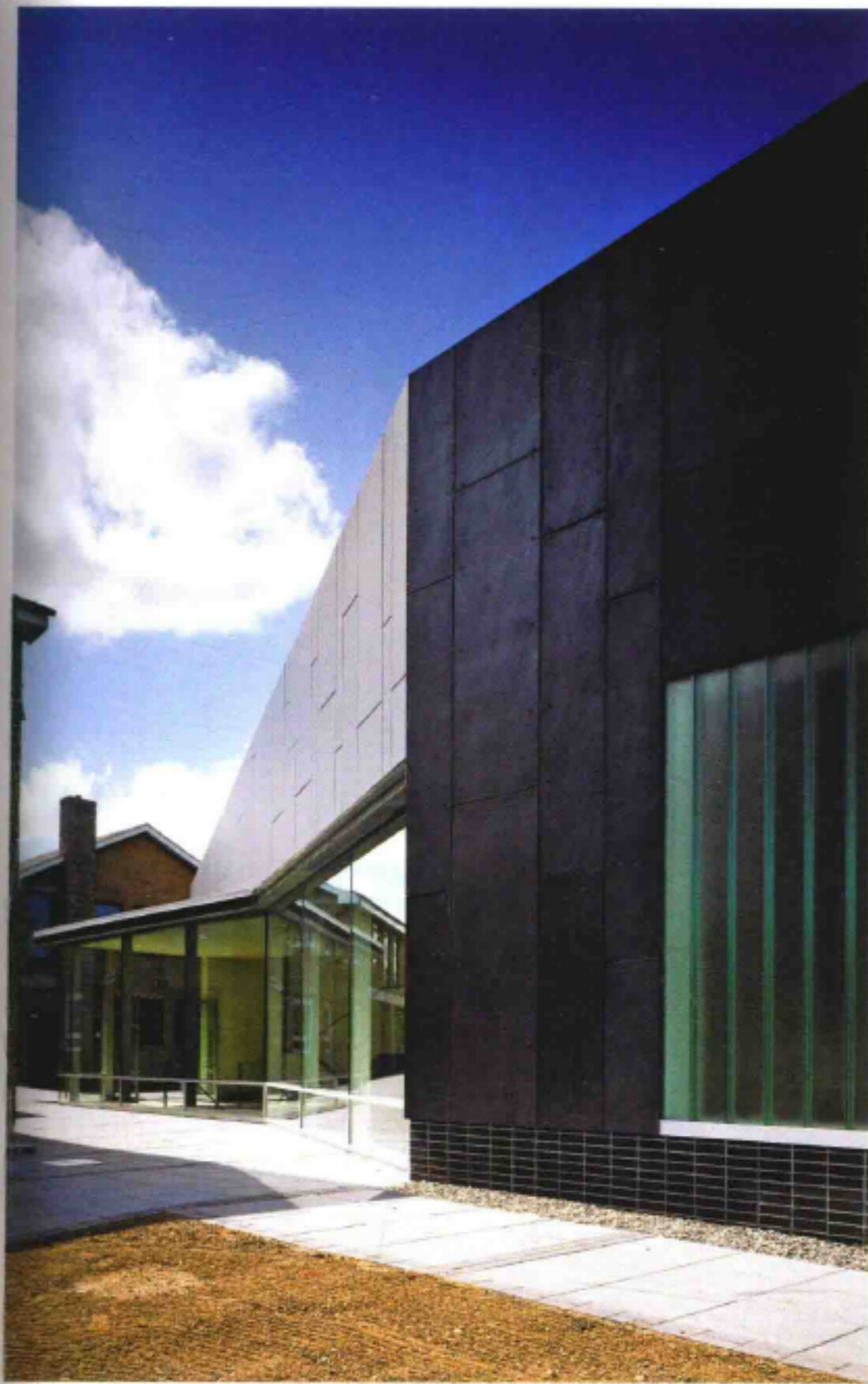
桑福德公园学校多功能厅

从桑福德大路望去，新建的多功能厅构成了学校的全标识，使得学校在周围的背景环境中更加突出。多功介于校舍与大门之间，现代风格的结构犹如纽带一般接着学校内不同的建筑。设计的理念即为建造一个供校不同学科部门共同使用的多功能大厅，包括羽毛馆、篮球场、储存柜及更衣橱等。由于其特殊的用途室内外音响设备显得尤为重要。

外观材质的运用凸显简约，借以强调建筑与背景环境跳跃感。清一色的水泥覆层使得入口犹如镶嵌在表面般。设计中尽量降低减少内部楼层，在视觉上将整个筑与四周的小路连通，营造统一感。



Front elevation's night view 建筑正面夜景



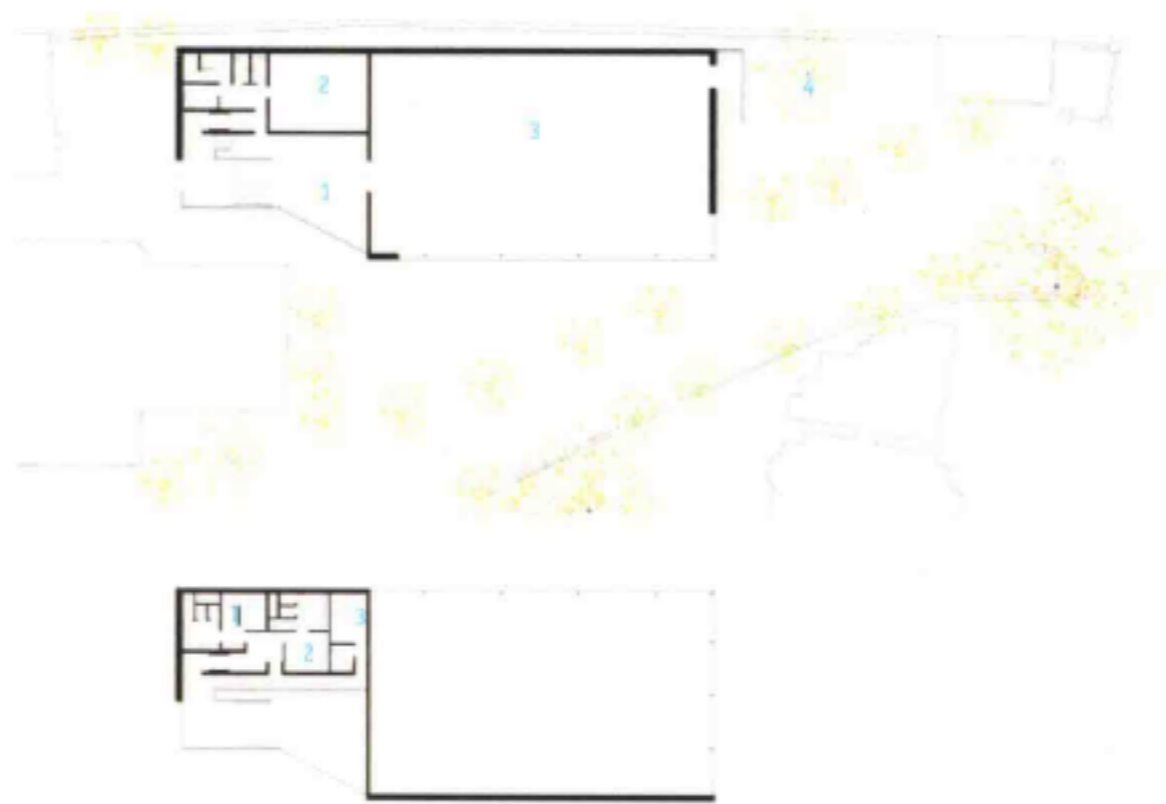
入口外观 Entrance foyer exterior



内外连接处 Exterior + interior connection



人行·集会空间 Foyer, assembly space



Ground floor plan

1. plant
2. store
3. multi-purpose hall
4. foyer

一楼平面图

1. 机房
2. 仓库
3. 多功能厅
4. 大厅

Upper floor plan

1. changing 1
2. changing 2
3. sports office

二楼平面图

1. 更衣室1
2. 更衣室2
3. 体育厅

Photo: Rós Kavanagh

Educational

Completion Date: 2009

Architect: DTA Architects
Team: Colin Mackay, Derek Tynan, Dermot Reynolds, David Graham