

Futian Science & Technology Plaza, Shenzhen

福田科技廣場第二輪方案

Design company: Urbanus Architecture & Design Inc.

Chief architect: Meng Yan

Team: Li Da Zhang Zhen Tu Jiang Huang Zhiyi Yang Qili Mathias Wolff Zuo Lei Xia Miao Peng Yuxin Rao Enchen Wang Yanfeng

Client: Jindi Real Estate

設計單位: 都市實踐

主創建築師: 孟岩

項目組: 李達 張震 塗江 黃志毅 楊期力 Mathias wolff 左雷 夏淼 彭宇新 饒恩辰 王彥鋒

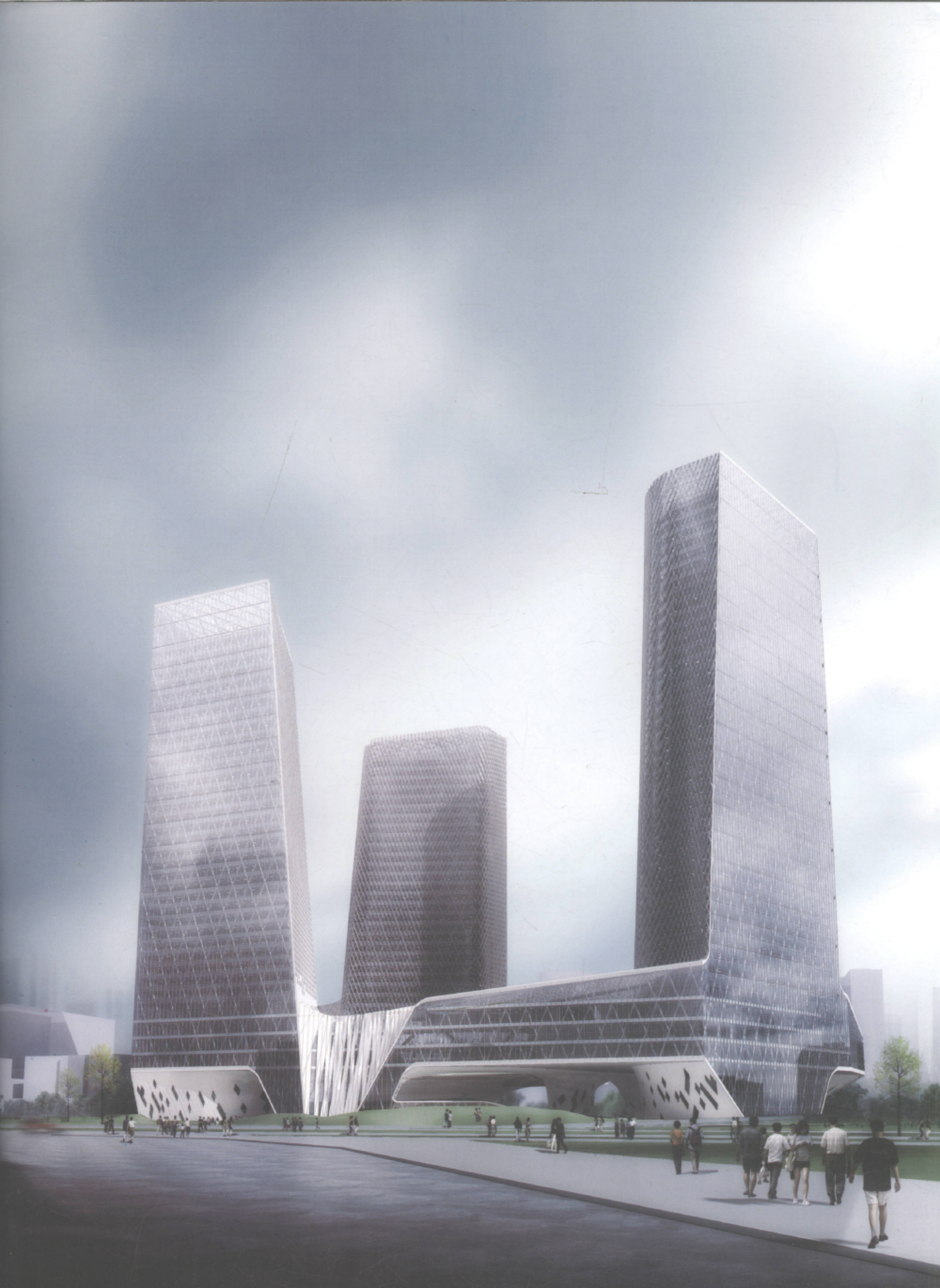
業主: 深圳市金地房地產

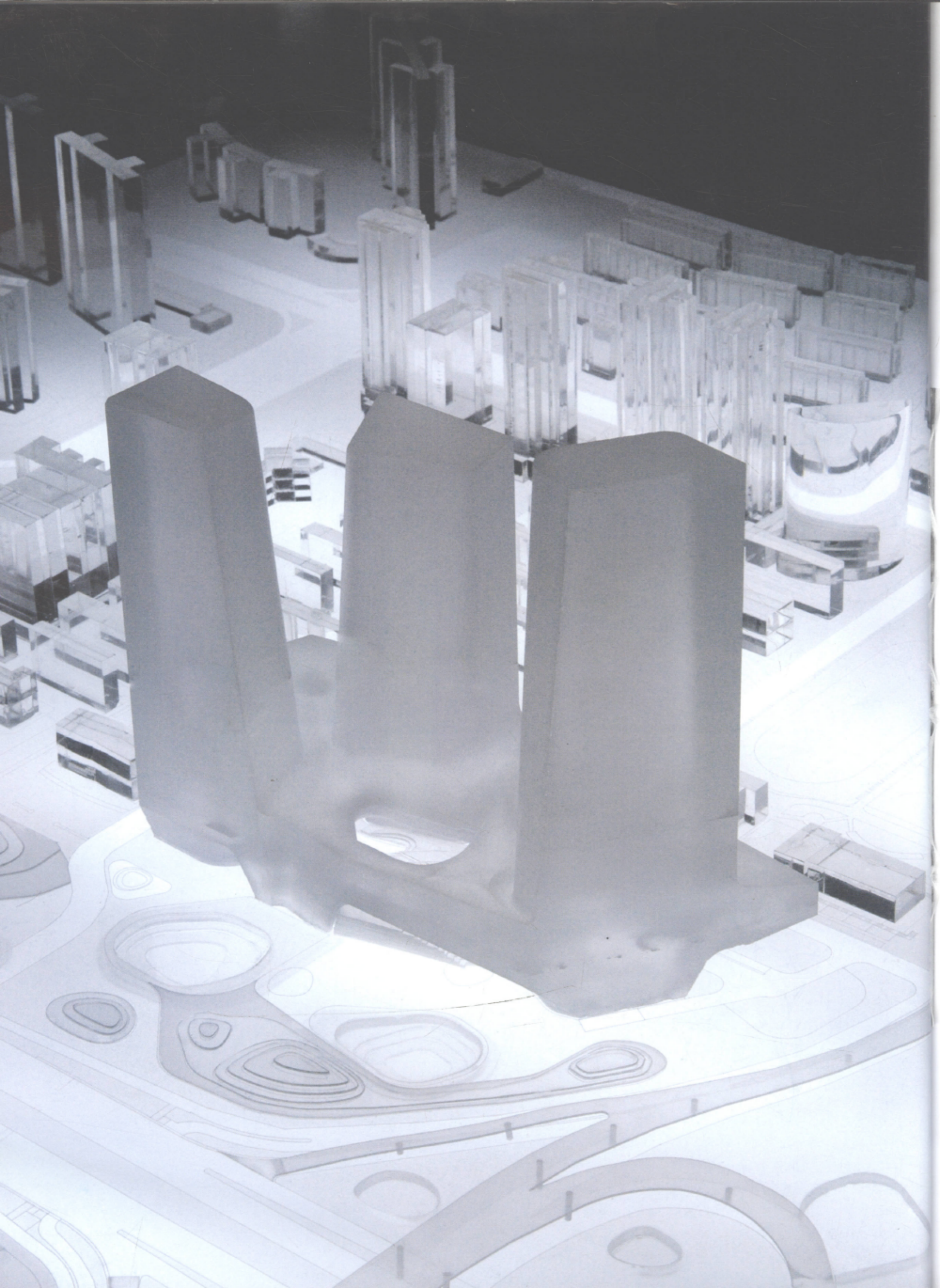
The scheme calls in question and reflects on the urban space dissimulation caused by the typology of nearly all the large building complexes in current China. This kind of typology mostly adopts the form of the tower buildings established on the large-area base podia. The tower building can both realize the optimization of the land and landscape resource value, and achieve the representative aspiration and symbolic meaning of the city; the podia tightly anchor the high tower buildings onto the site with the large public porches, the multi-functional spaces and the business spaces, satisfying people's stable and grand visual experiences to appreciate buildings long formed under the limit of technical conditions. However, this kind of typology with the tower buildings plus podia tends to separate the building from the surrounding city, and podia's occupation of the site blocked people's free traverse through the city space. As a large complex of business, hotel and residence, this tower building is not detached from the podia but is a complete and continuous integrity. The podia is not situated on the site but floated in the air, as a public space linking three tower buildings. It not only forms an open terrace but also serves as a gigantic container including all the public facilities of several buildings. The whole building cluster is like a cut mountain wonder, like a wonderful peak, a gorge, a water-eroded cave, and a forceful rise of the land. The ground around the ground floor of the building is again released so that the lawns, woods and various activity places are like floating islands strewn around without blocking people's strolling around the city. The picture relationship of the city has been transferred from two-dimension to three-dimension, thus maximally exhibiting the landscape potentials without cessation. The dream that urban dwellers harbour for the rural life can be fulfilled by this kind of man-made landscape.

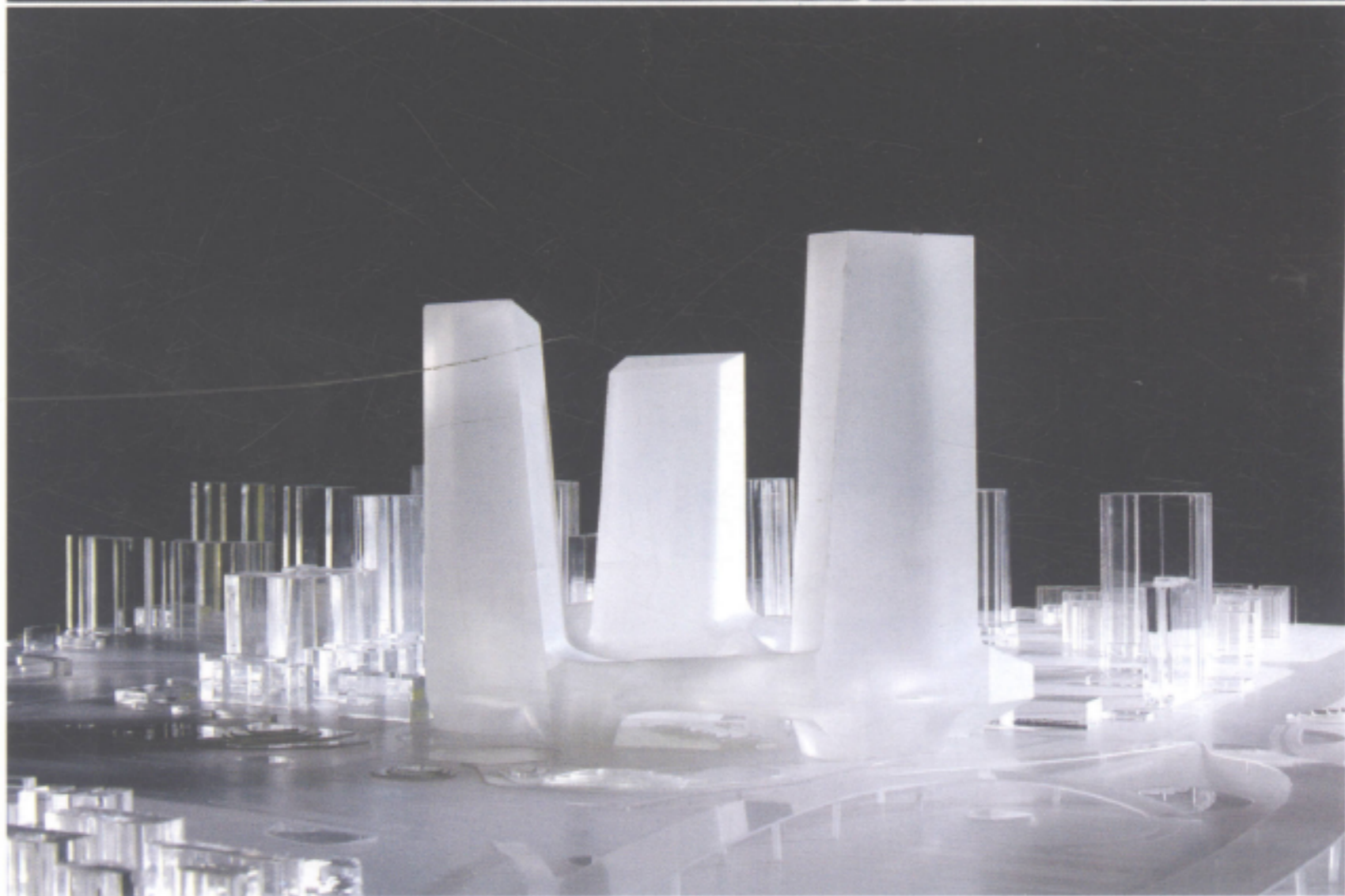
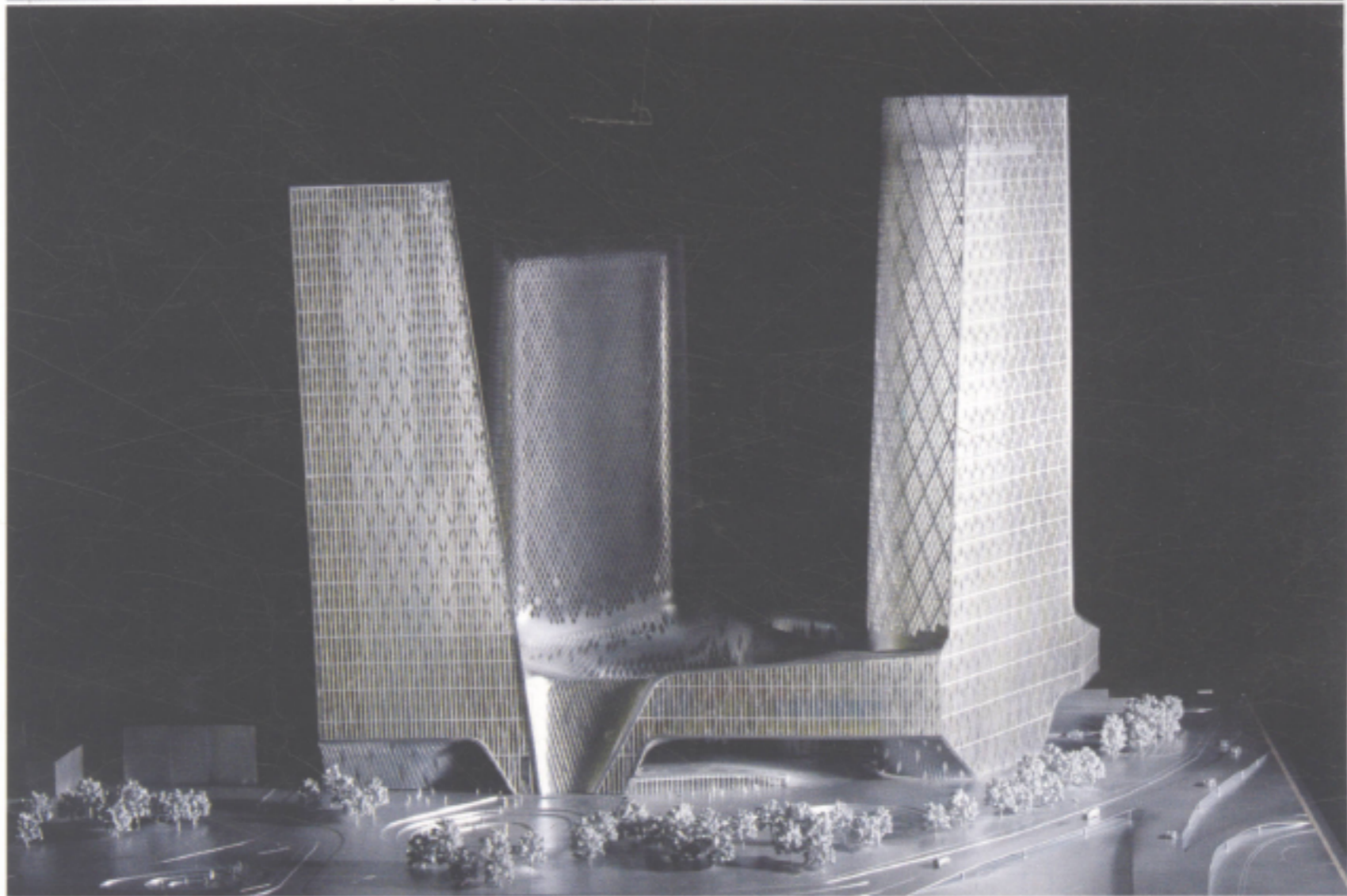
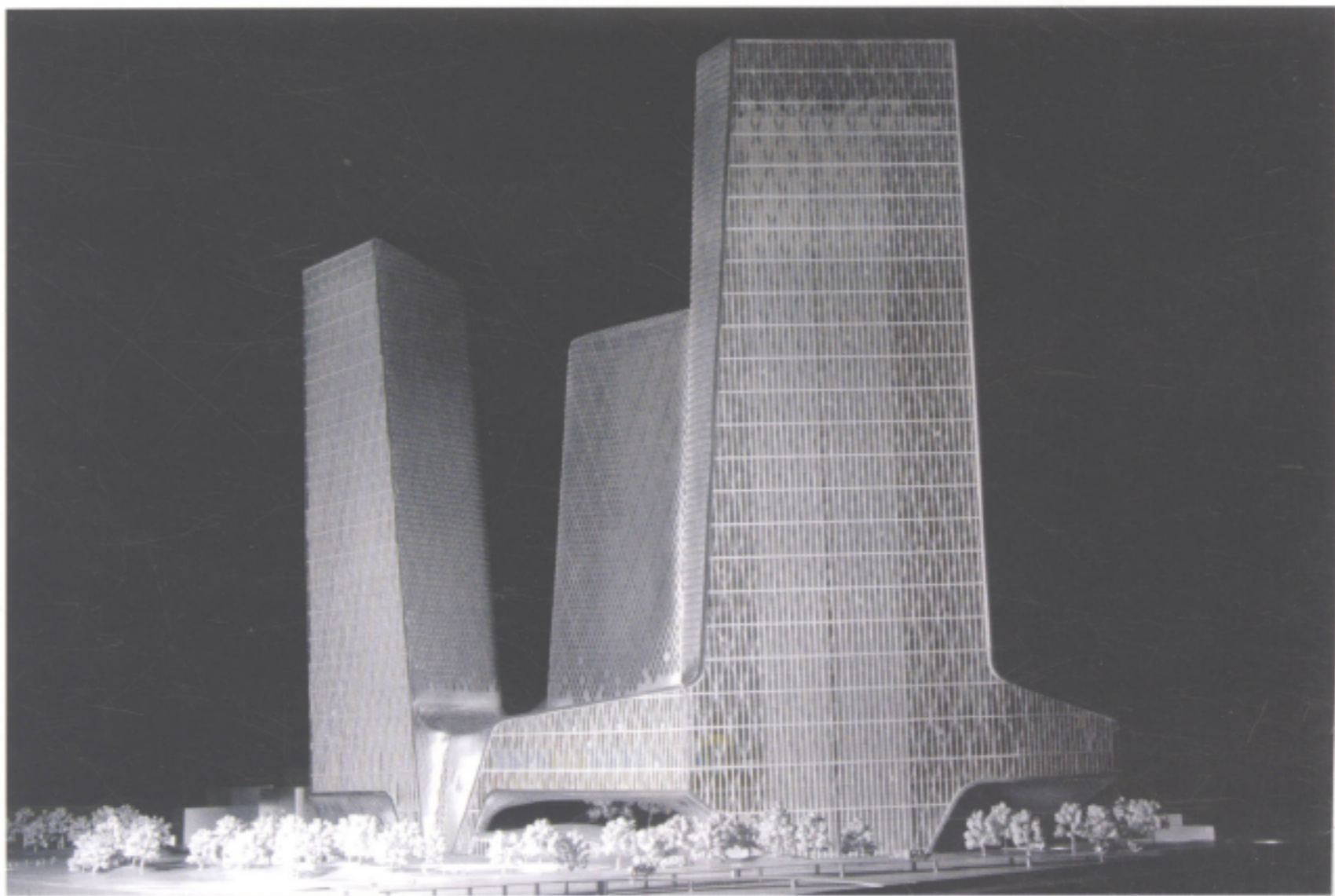
方案是針對當今中國幾乎所有大型建築綜合體的類型學所造成的城市空間異化的質疑和反思。這種類型學大都採用在大面積基座裙樓上設置塔樓的形式。塔樓既實現了土地和景觀資源的價值最大化，又滿足了城市的表現欲和象征意義；裙樓則是用大型公共門廳、多功能空間和商業空間把高聳的塔樓緊緊錨固在基地上，滿足了人們長久以來在技術條件的限制下形成的欣賞建築穩固、莊重的視覺經驗。然而，這種塔樓加裙樓的類型學往往使建築從周邊的城市中分離出來，裙樓對基地的占據，阻隔了人們在自己的城市空間中的自由穿越，作為一座大型商業、酒店和住宅綜合體，這個的塔樓和裙樓不再分離，而是形成一個完整連續的整體。裙樓不是座落在基地上，而是浮在空中，成為連接三個塔樓的公共空間。它既形成了一個開放的平臺，又作為一個巨大的容器包含了幾座大樓的所有公共設施。建築群整體像一座被切削的山體奇觀，是奇峰，是峽穀，是溶洞，是大地有力的隆起。大廈底層周圍的地面被重新釋放出來，草地、樹林和各種活動場地像一片片浮島散落在四周，使得人們在城市中的漫遊不再被阻隔。城市的圍底關係由二維轉入三維，景觀潛力被最大化地連續展現。都市人對田園生活的夢想，借由這種人造地景得以實現。

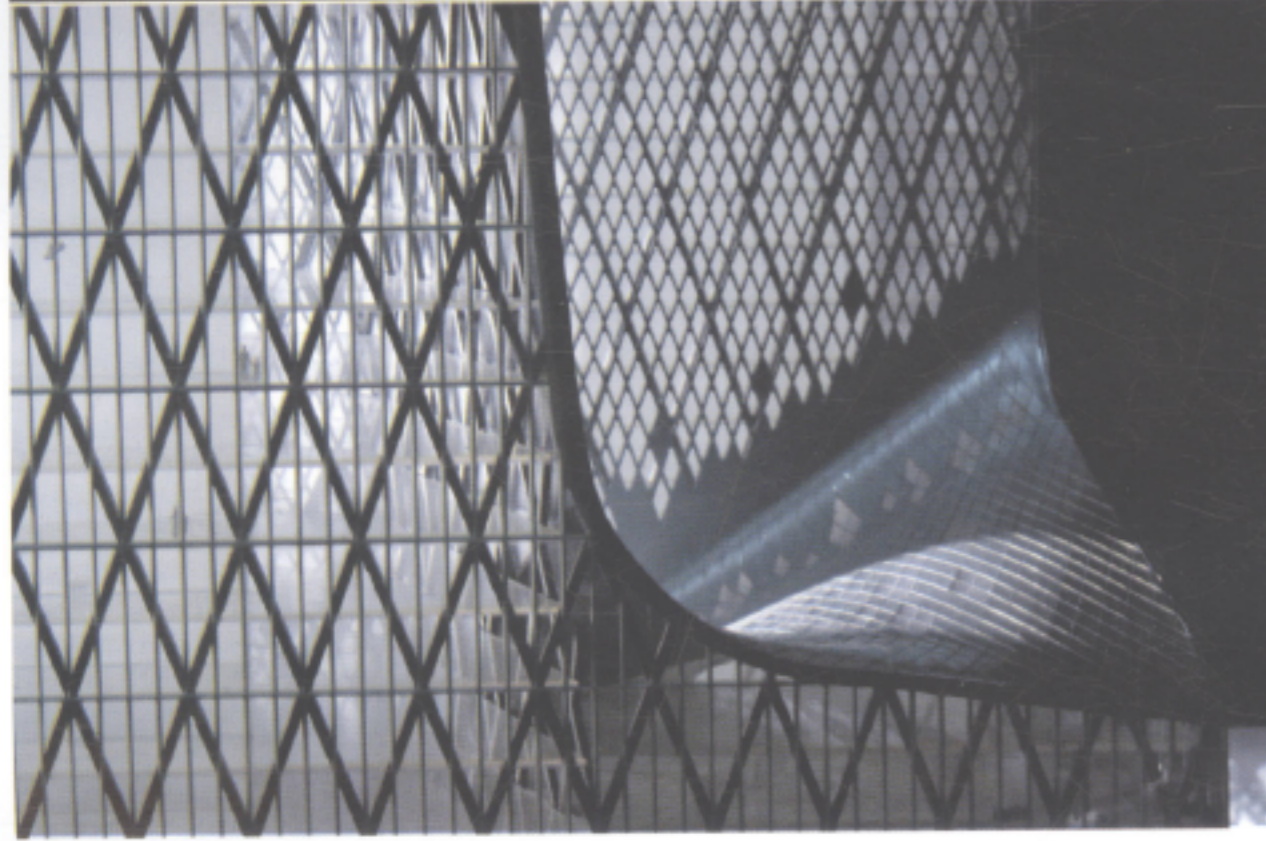
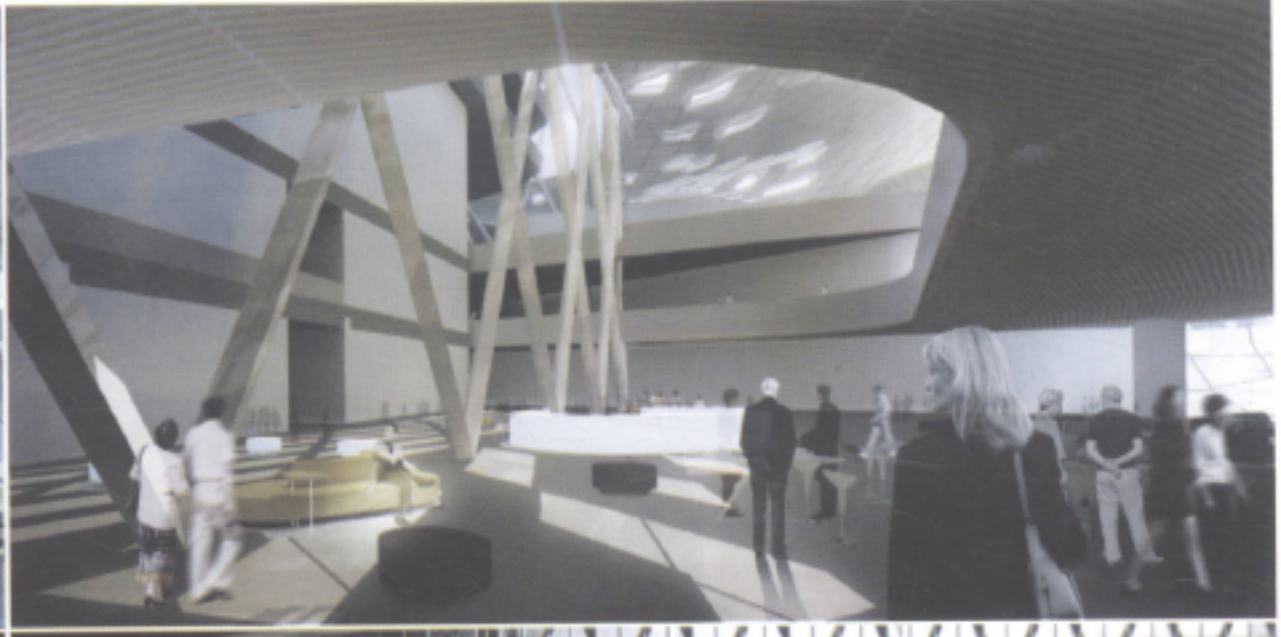
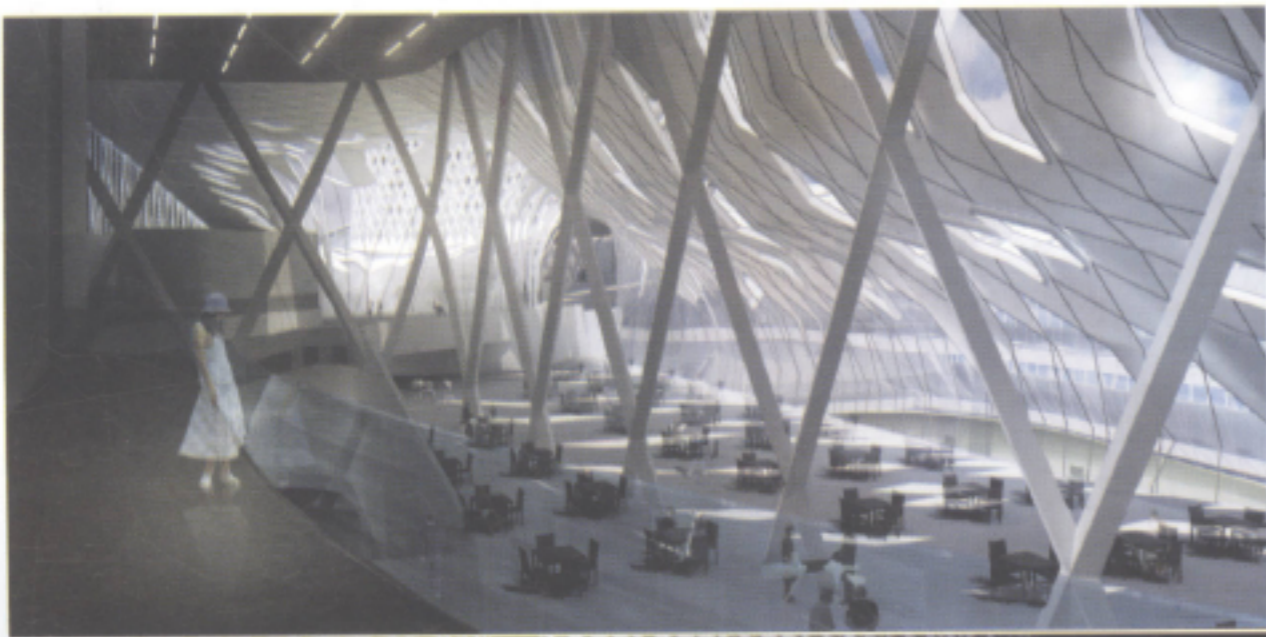




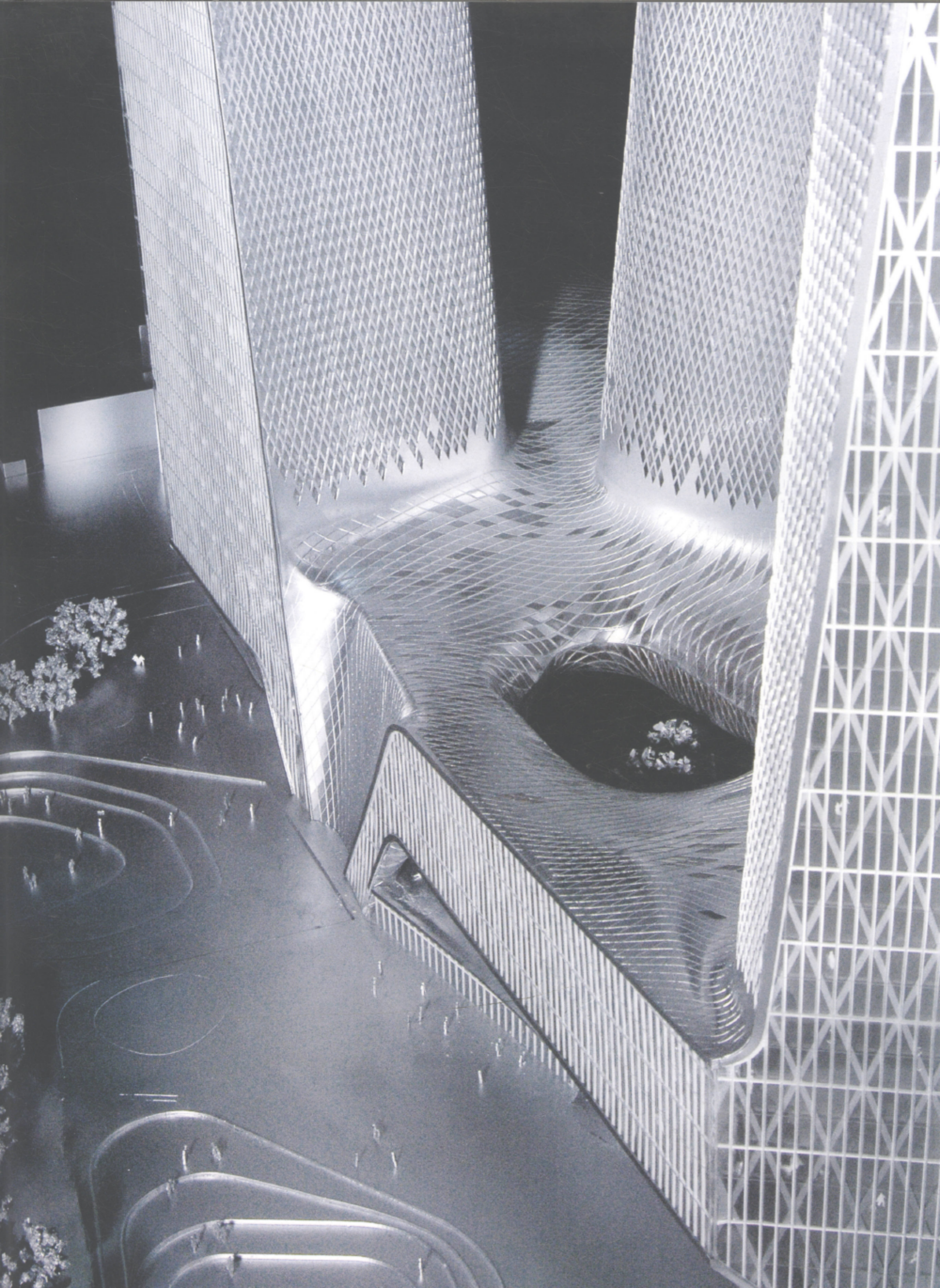


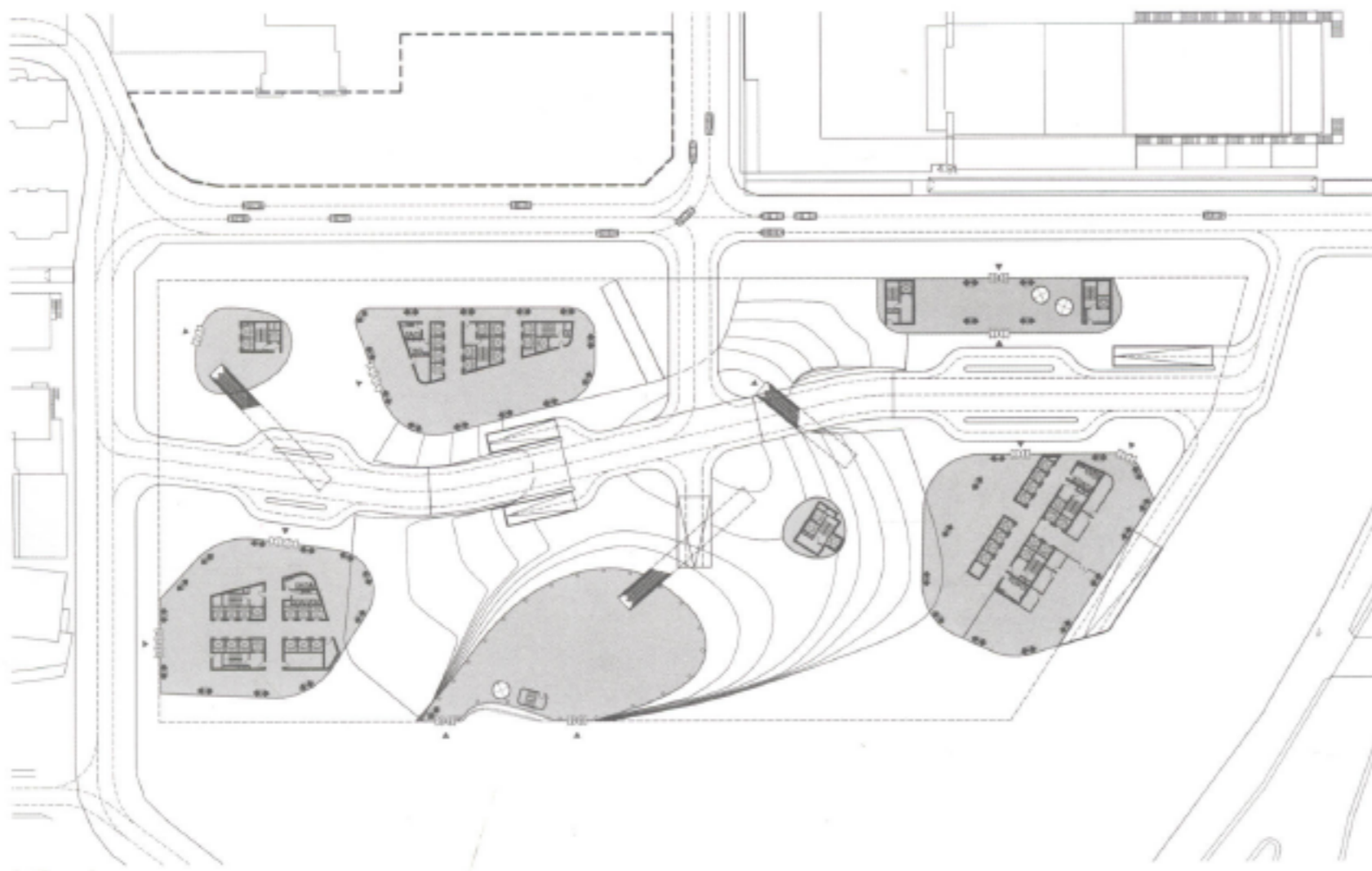




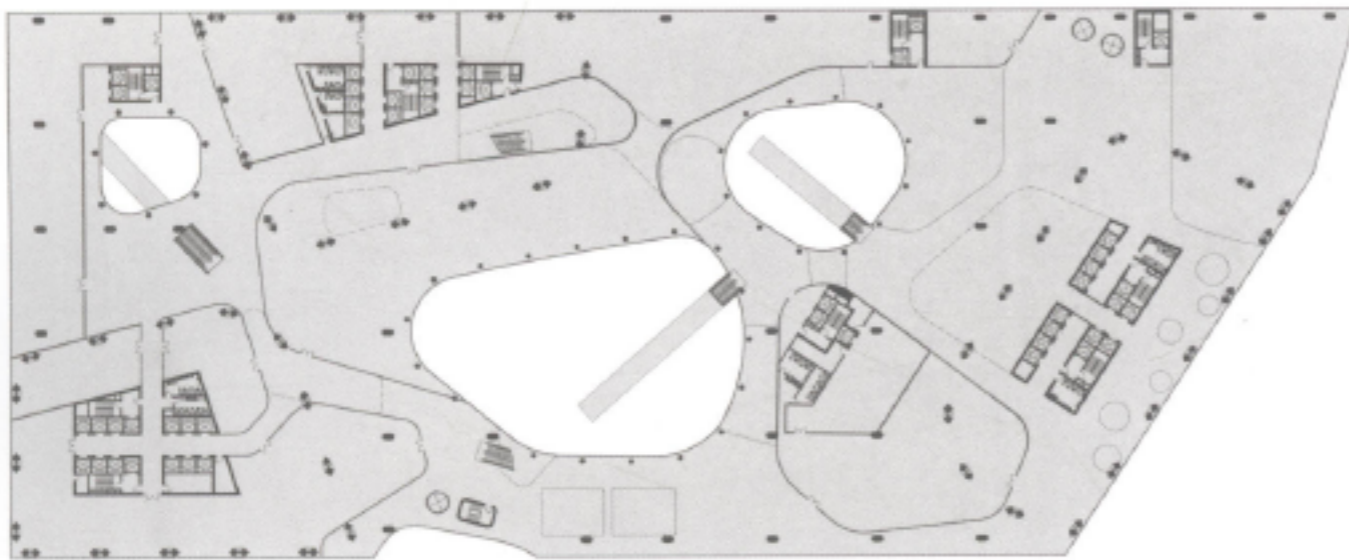


Landscape plan 1:800
景观层平面图 比例: 1:800

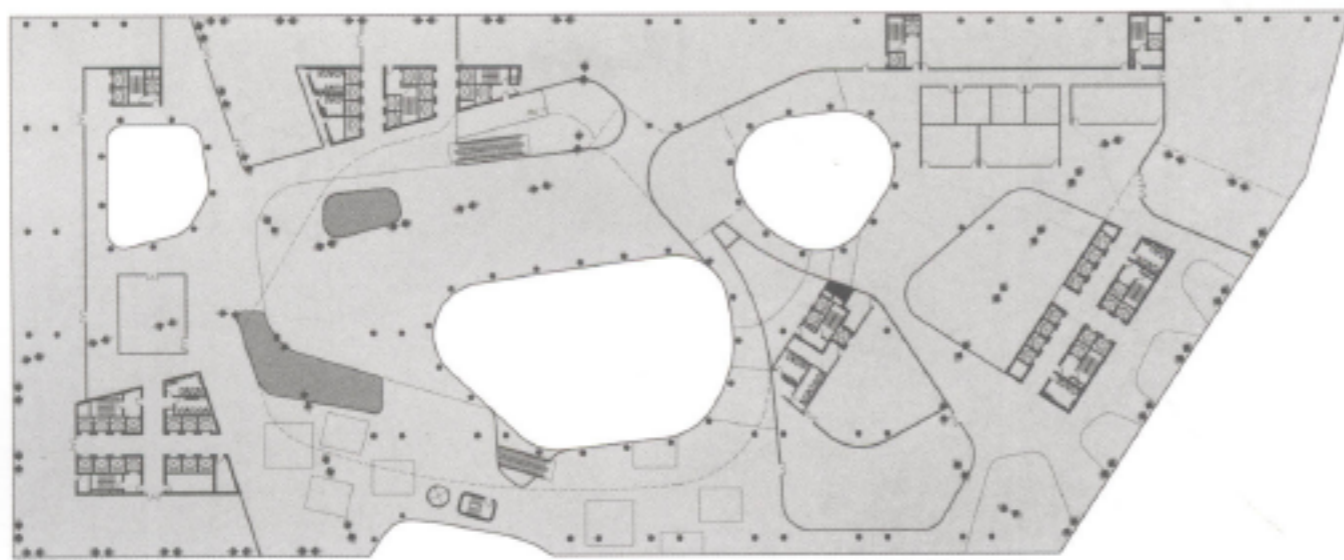




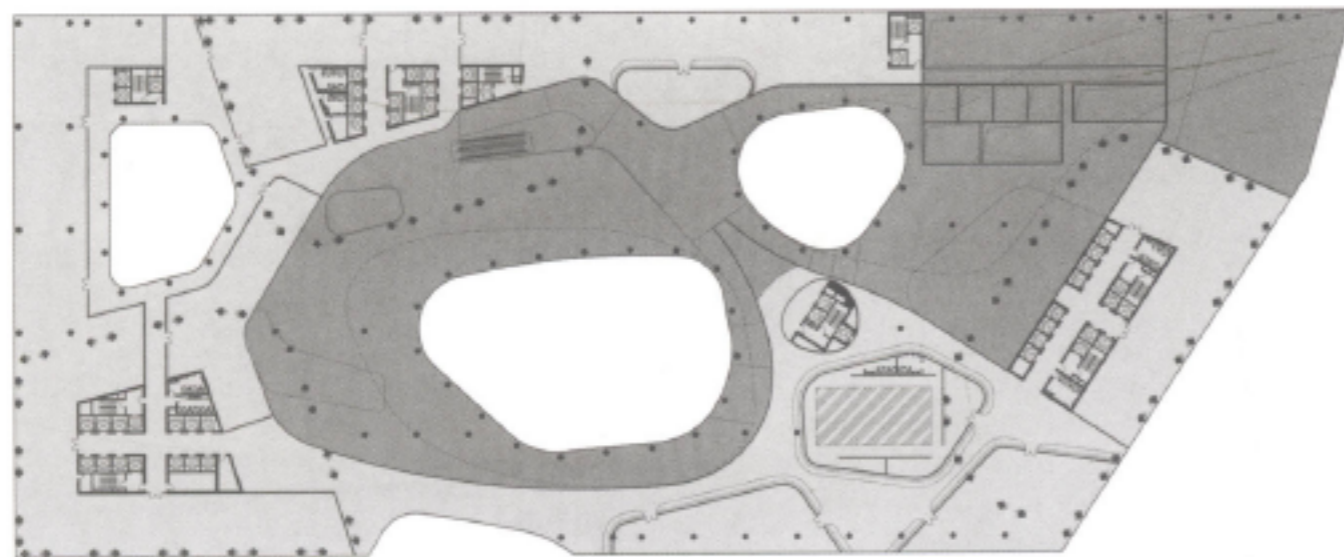
1st floor plan
一層平面圖



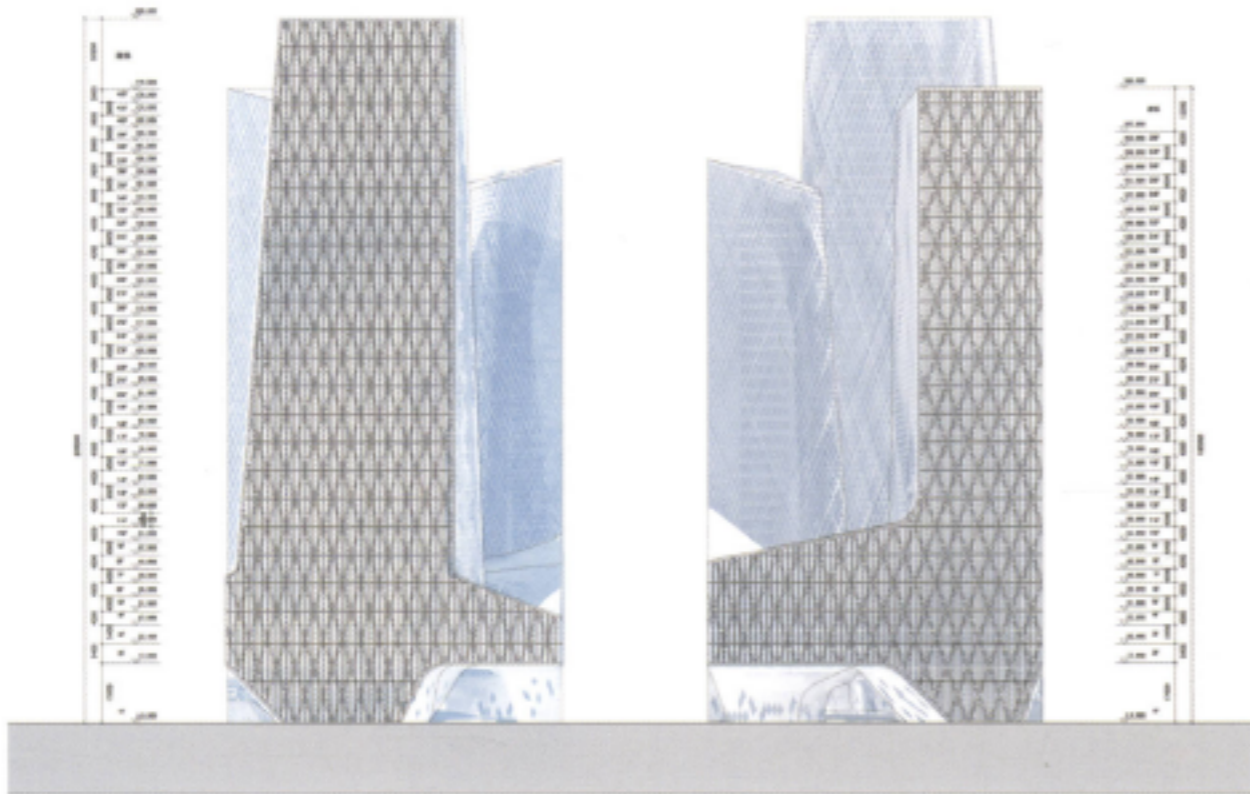
2nd floor plan
二層平面圖



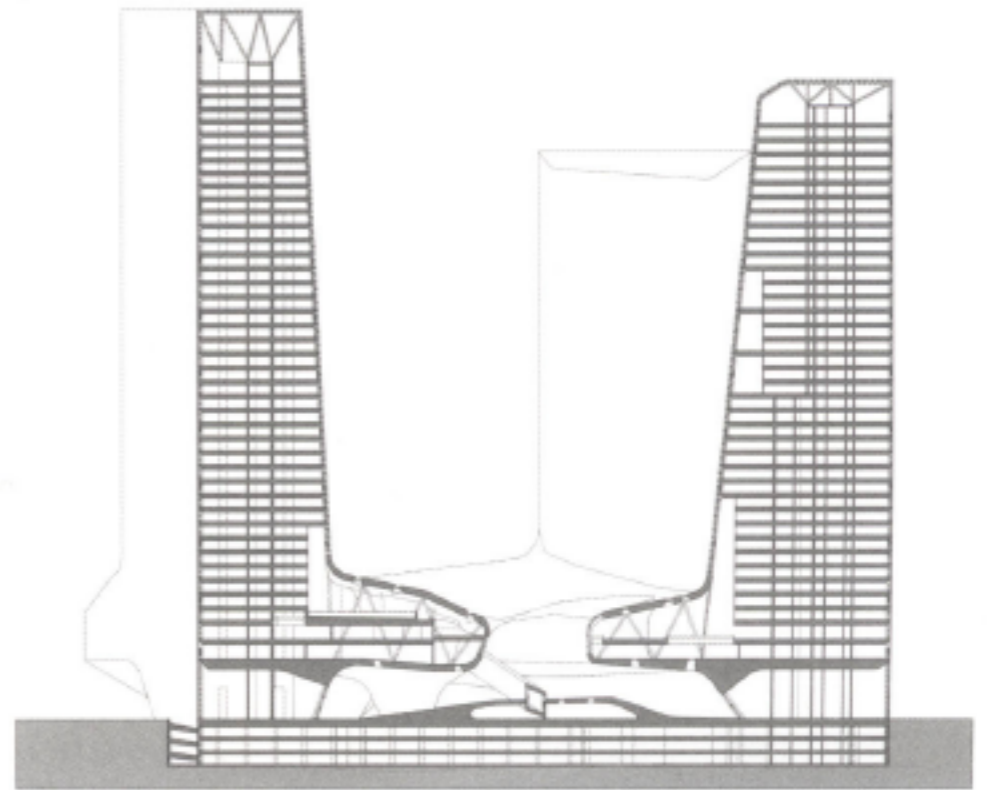
3rd floor plan
三層平面圖



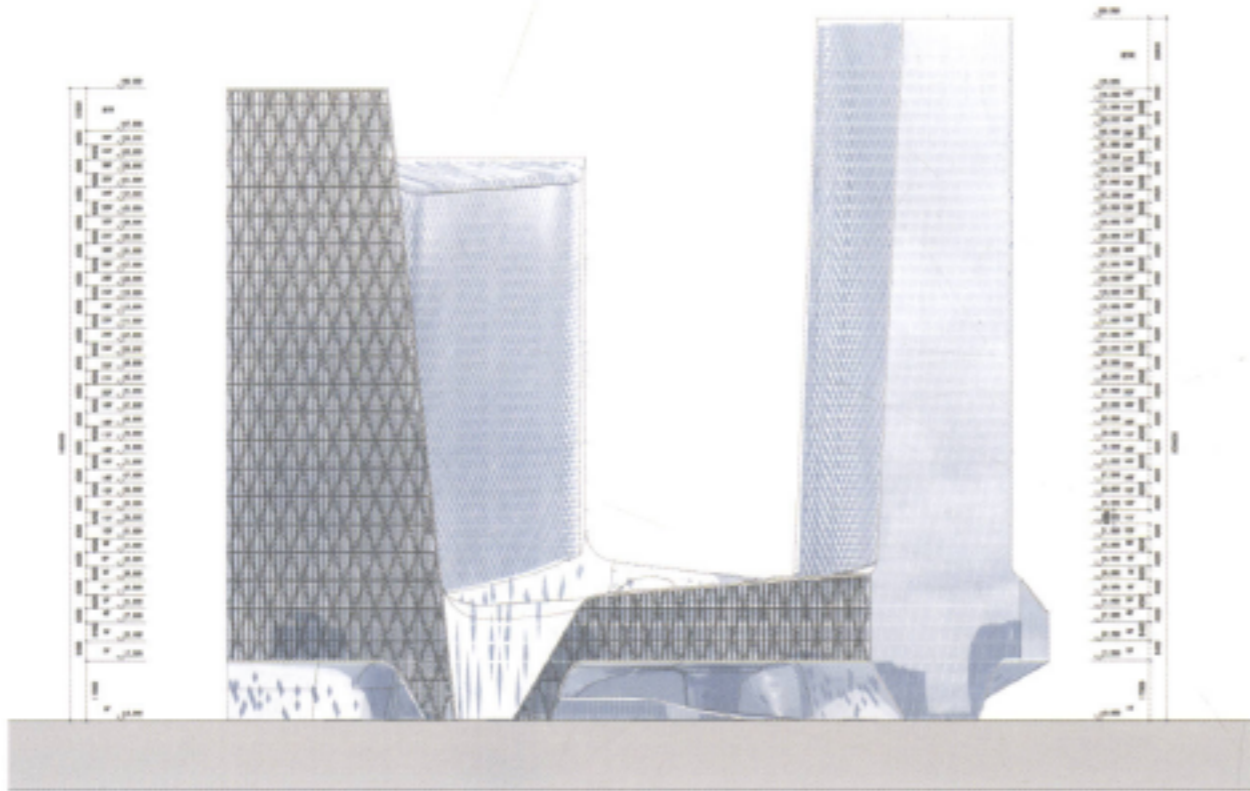
4th floor plan
四層平面圖



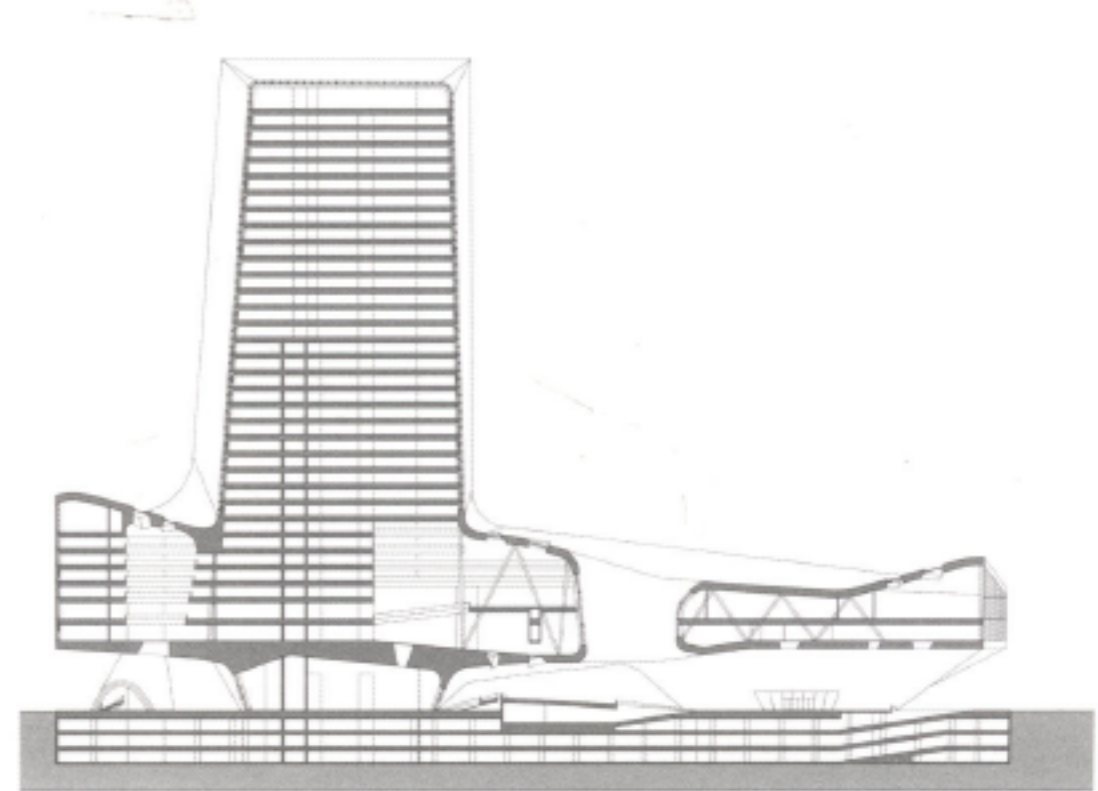
East elevation
东立面图



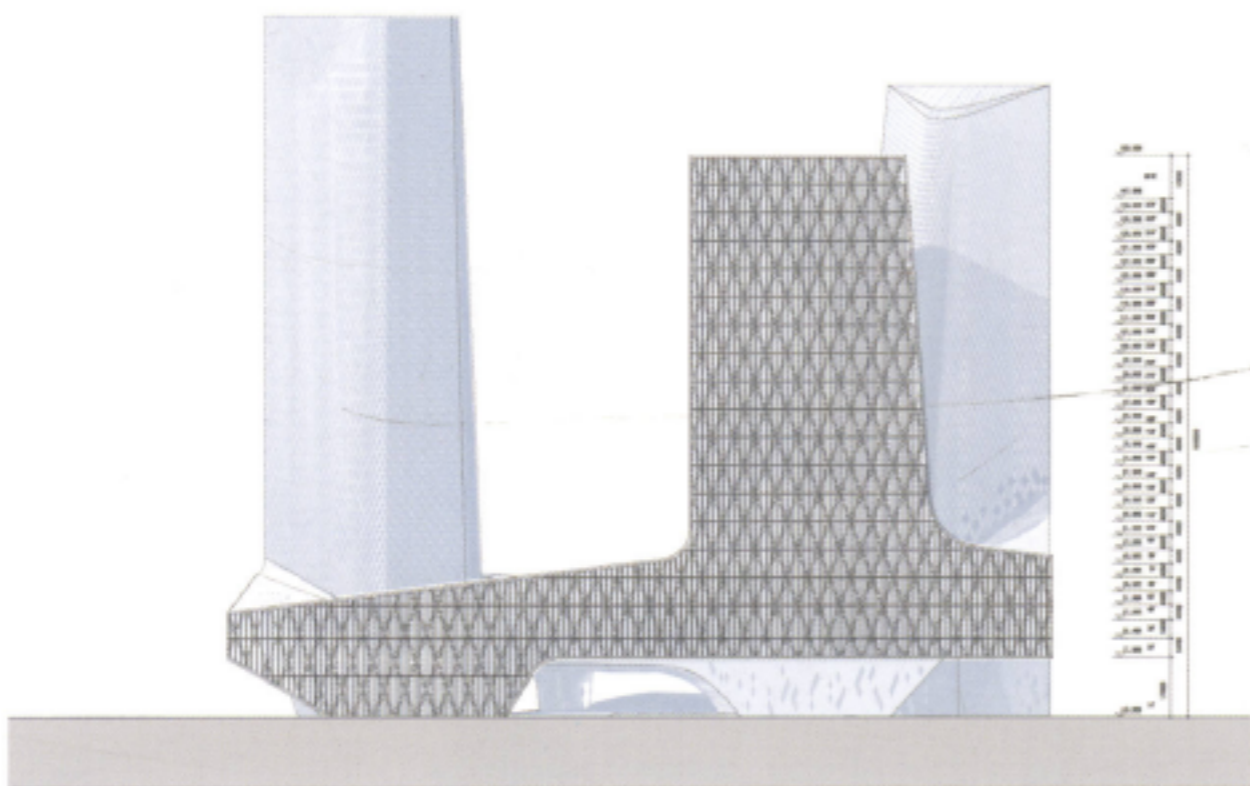
A-A section
剖面图A-A



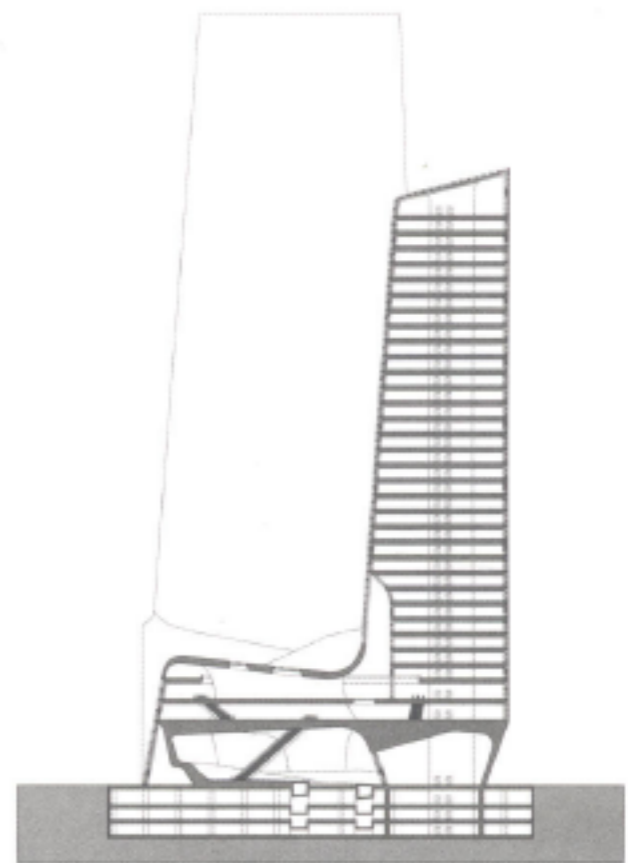
South elevation
南立面图



B-B section
剖面图B-B



West elevation
西立面图



C-C section
剖面图C-C