

CUMULUS

积云大厦

Functional area 功能区域

Apartments: 14,370 sqm Retail and public programme:
10,450 sqm Offices: 8,500 sqm Cultural and social
facilities: 19,200 sqm Underground parking

公寓: 14,370平方米 零售和公共设施: 10,450平方米 办公: 8,500平方米
文化和交际设施: 19,200平方米 地下停车场



Location: Oslo, Norway **Designers:** SMAQ **Photographer:** SMAQ **Competition date:** 2008 **Completion date:** 2014
Total area: 55,000 sqm **Competition name:** European 9 Competition **Place in the competition:** First prize

项目所在地: 挪威, 奥斯陆 设计师: SMAQ建筑事务所 摄影师: SMAQ建筑事务所 参赛时间: 2008年 建成时间: Unknown 建筑面积: 55,000平方米 竞赛名称: 第九届欧洲文雅城市可持续发展与新公共空间设计大赛 竞赛所获名次: 一等奖

Awarded reason:

The project "Cumulus" takes on the challenge of diversifying social structure along with the sustainability imperative.

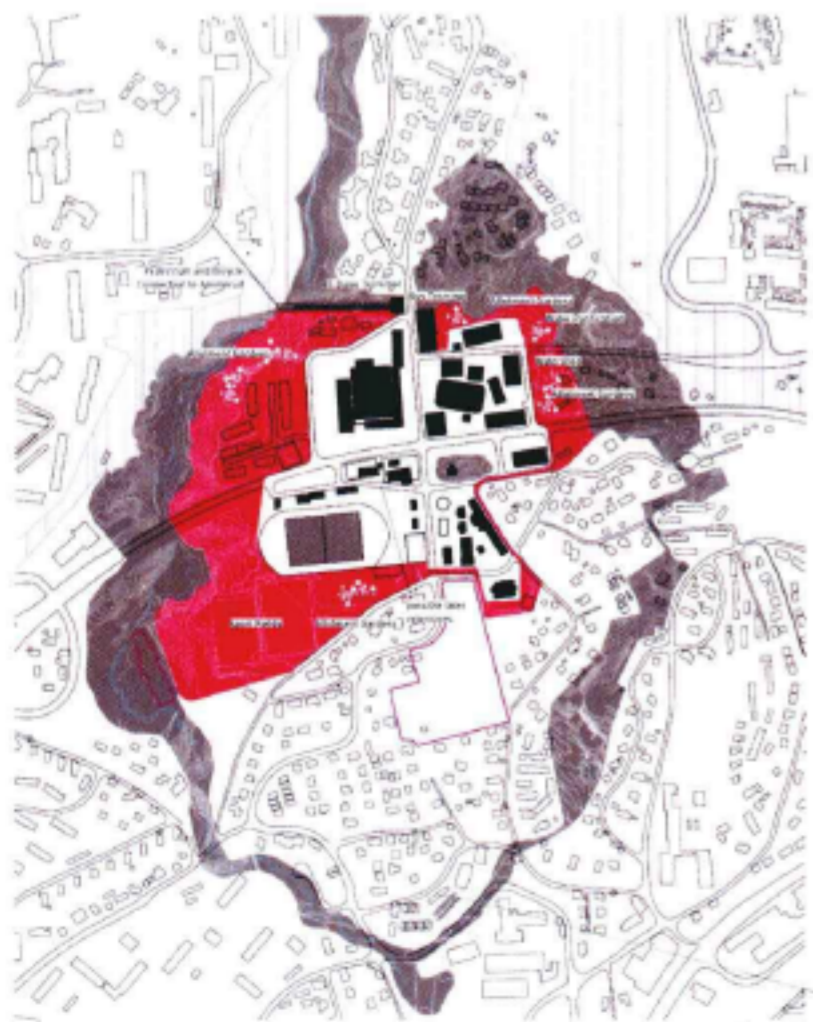
获奖原因:

积云大厦项目设计满足了多样化社会建筑结构的需要, 符合城市建筑可持续发展的要求。

Cumulus is a proposal for Grorud that believes in the latent potentials of the site: its latent ecologies and orders, the environmental presence in outer city low density urbanism, the mix and publicness of the blunt peripheral programmes and the underlying ideas of modern light and lit dwelling manifest in the existing housing slabs of Grorud centre. Cumulus thus is a strategy to re-cycle, de-sectorise and confront these latencies and interweave them through a concept of (water) flow: the project conceives social spaces as related to environmental dynamics and develops a close - but not too close - public sphere inherent to the loose aggregate at hand. Cloud! The white and heavy cumulus congestus cloud serves as performative model to develop an architectural

typology for this synthesising approach: undetermined and open on the ground, heavy and stable on first floor, a spongy heap in the sky. It floats above and fixates rudimentary every day programmes; it enables an intimate and lit inhabitation of the skies.

挪威格鲁德地区拥有独特的生态景观和古典建筑, 人口密度小、空气清新、自然纯朴的周边设施、蕴含着现代建筑思想的建筑风格等优越条件为积云大厦的创建提供了必要的条件。积云大厦的设计遵循环保、可循环利用的设计理念, 巧妙结合所处的地理位置的优越条件, 将公共空间与动态环境紧密相联, 营造出和谐自然的氛围, 同时, 完美的弹性空间, 为将来的环境发展提供有利条件(十年后这里的人口会增加一倍)。云朵状的建筑外观为建筑领域开创了一个全新的类型: 开放宽敞的一楼, 坚实厚重的二楼, 海绵状的锥形顶层, 整个建筑如同漂浮在空中, 注视着每天的日升日落, 赋予高层建筑以崭新的色彩。



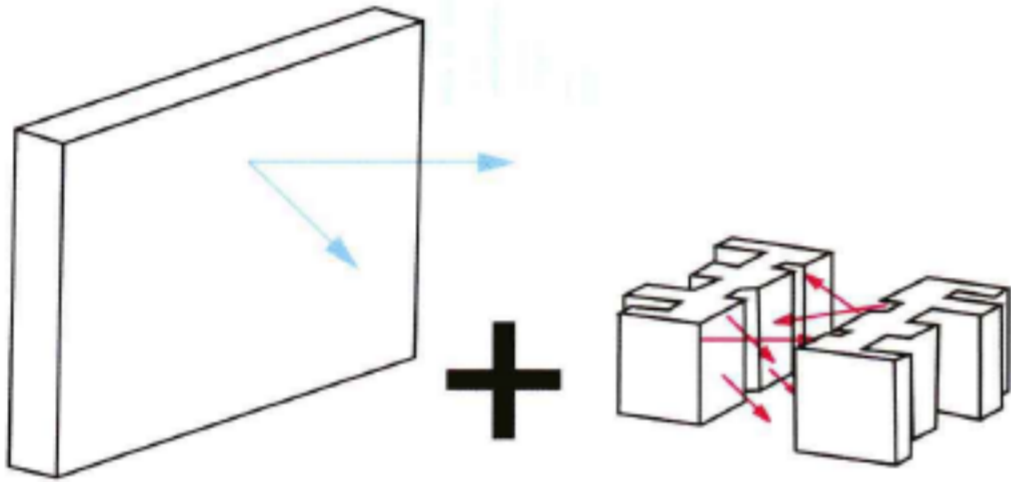
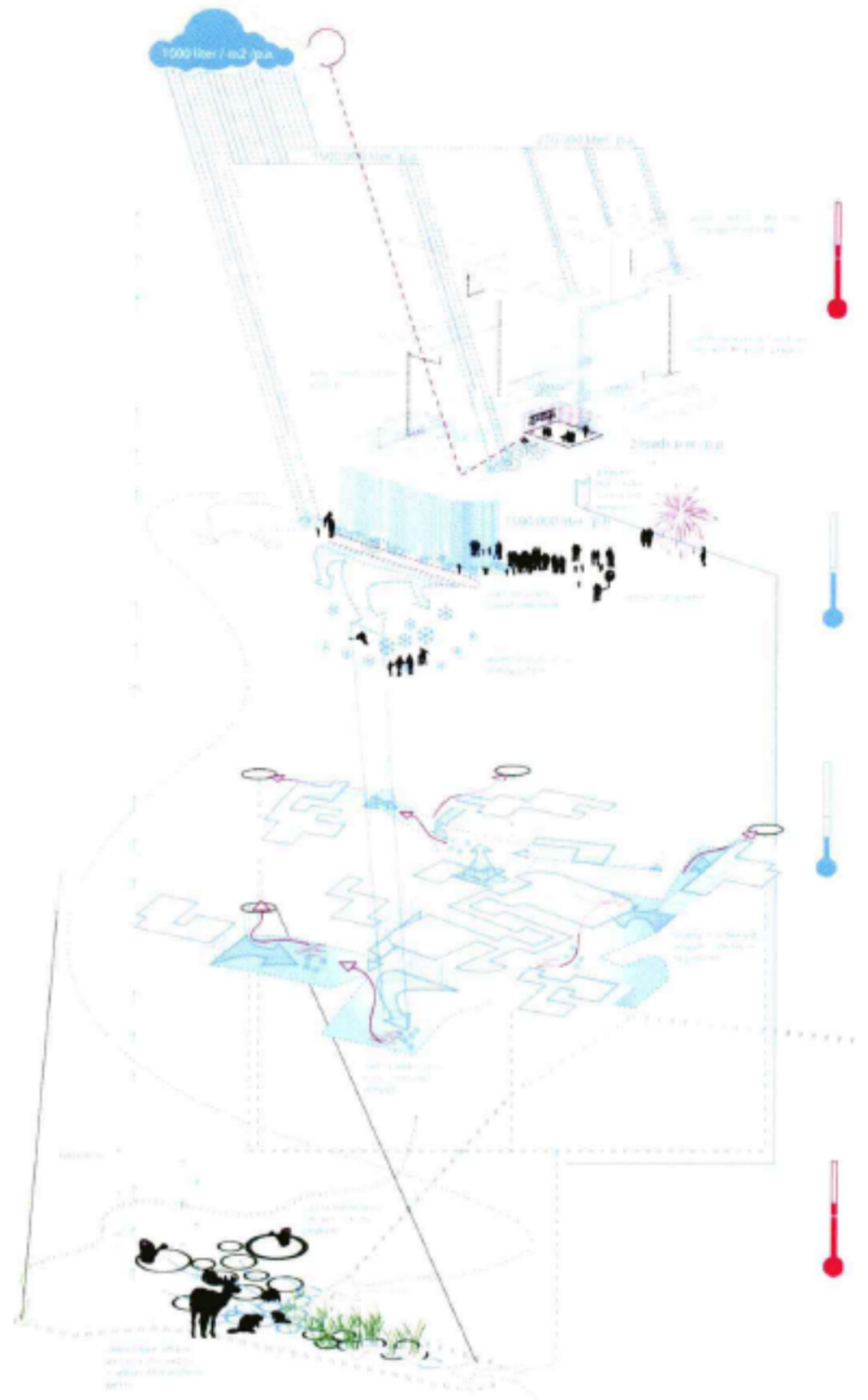


blomar og plantar

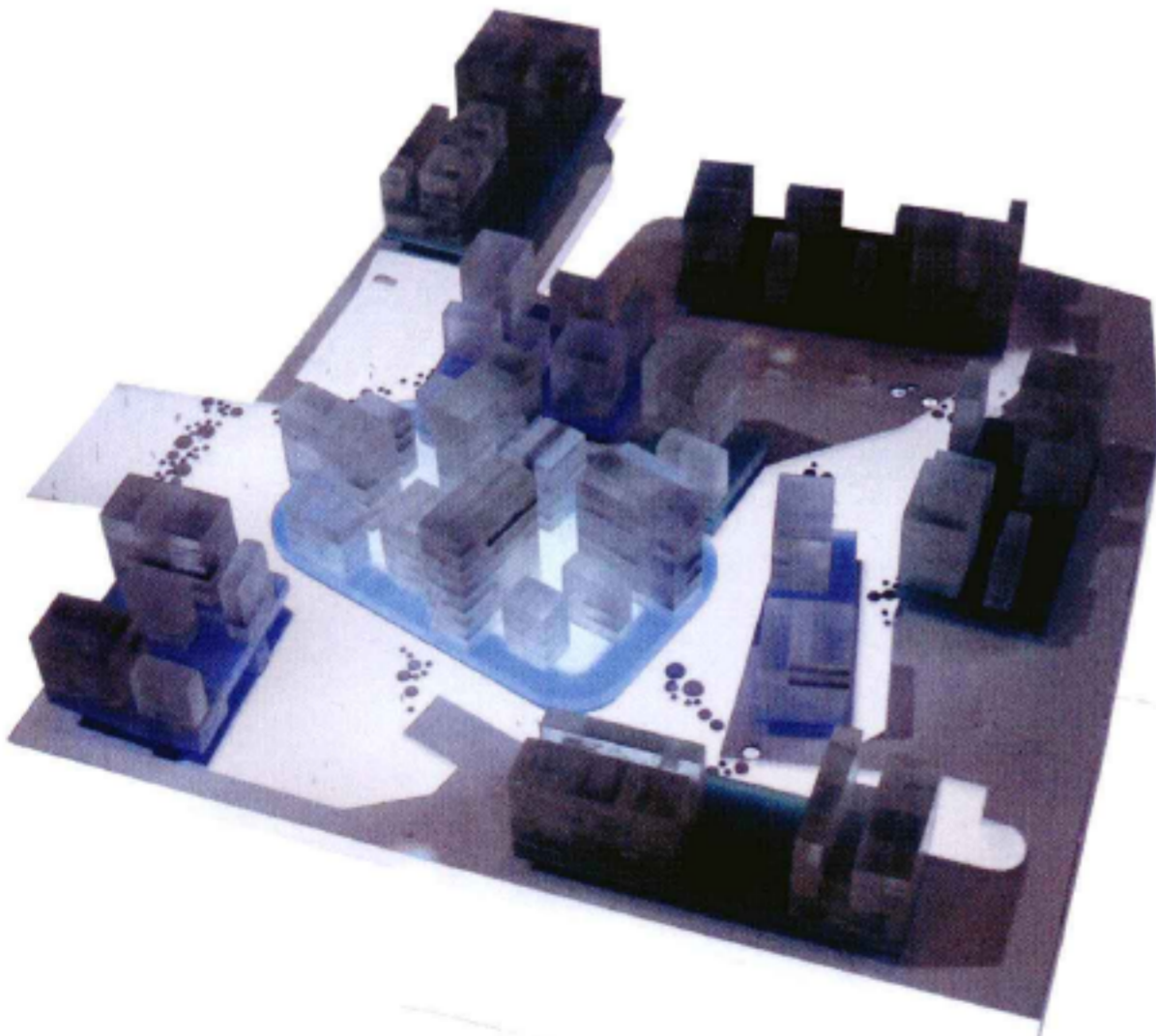
blomsterbuket

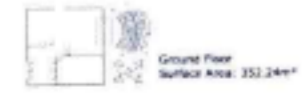
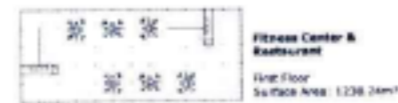
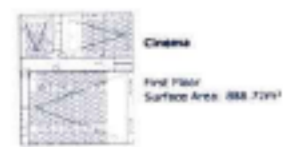
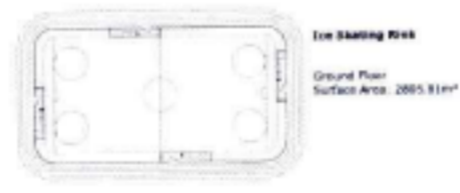


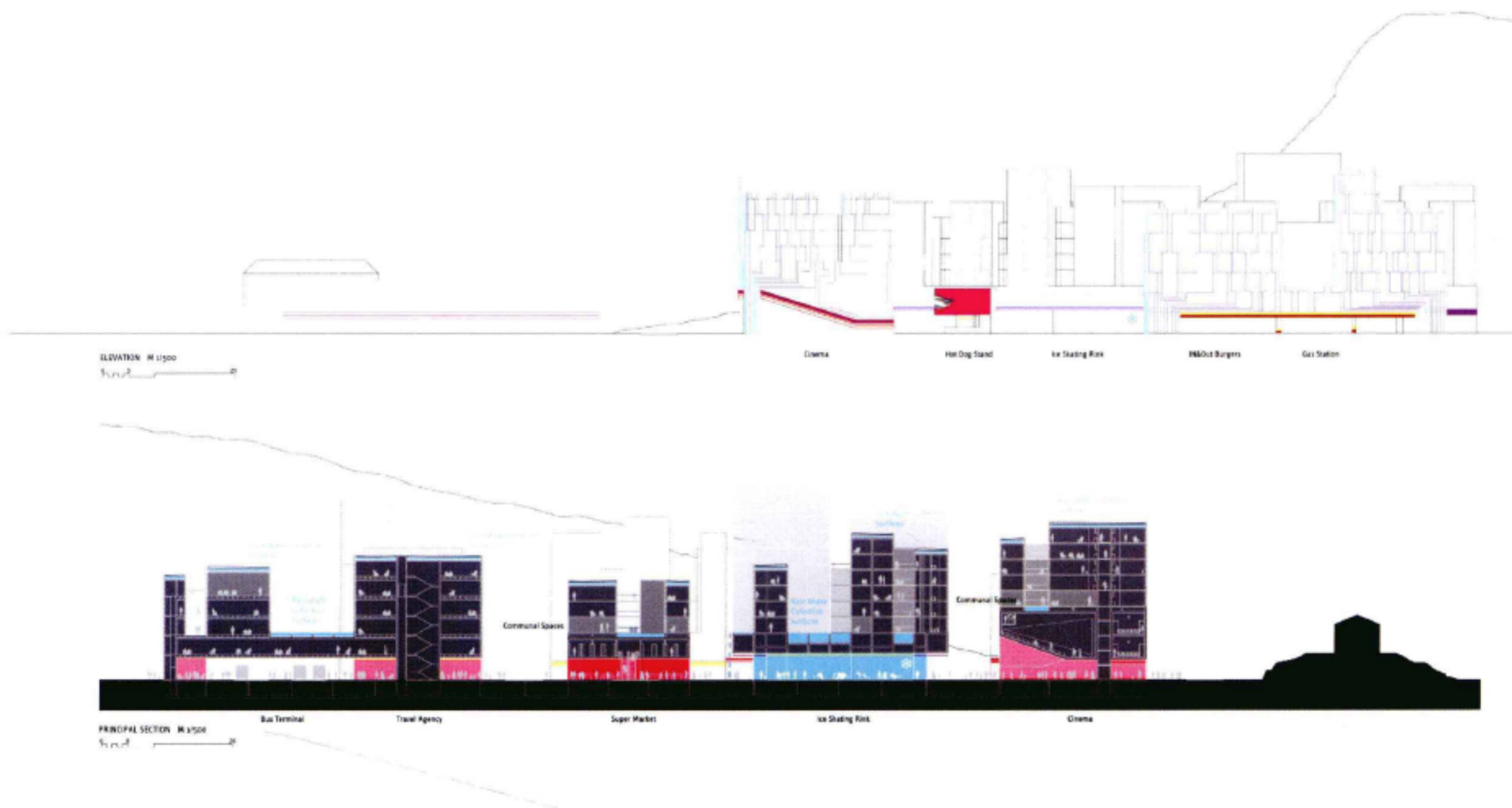
restaurant

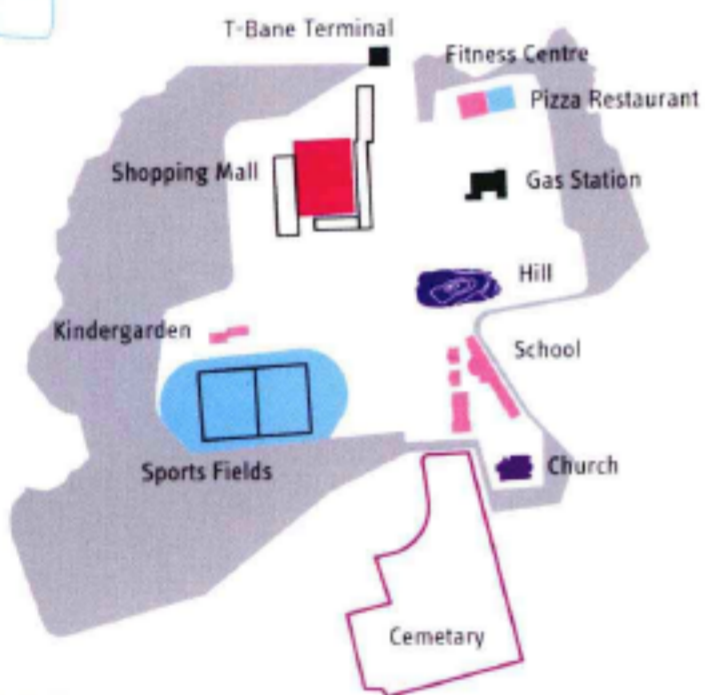
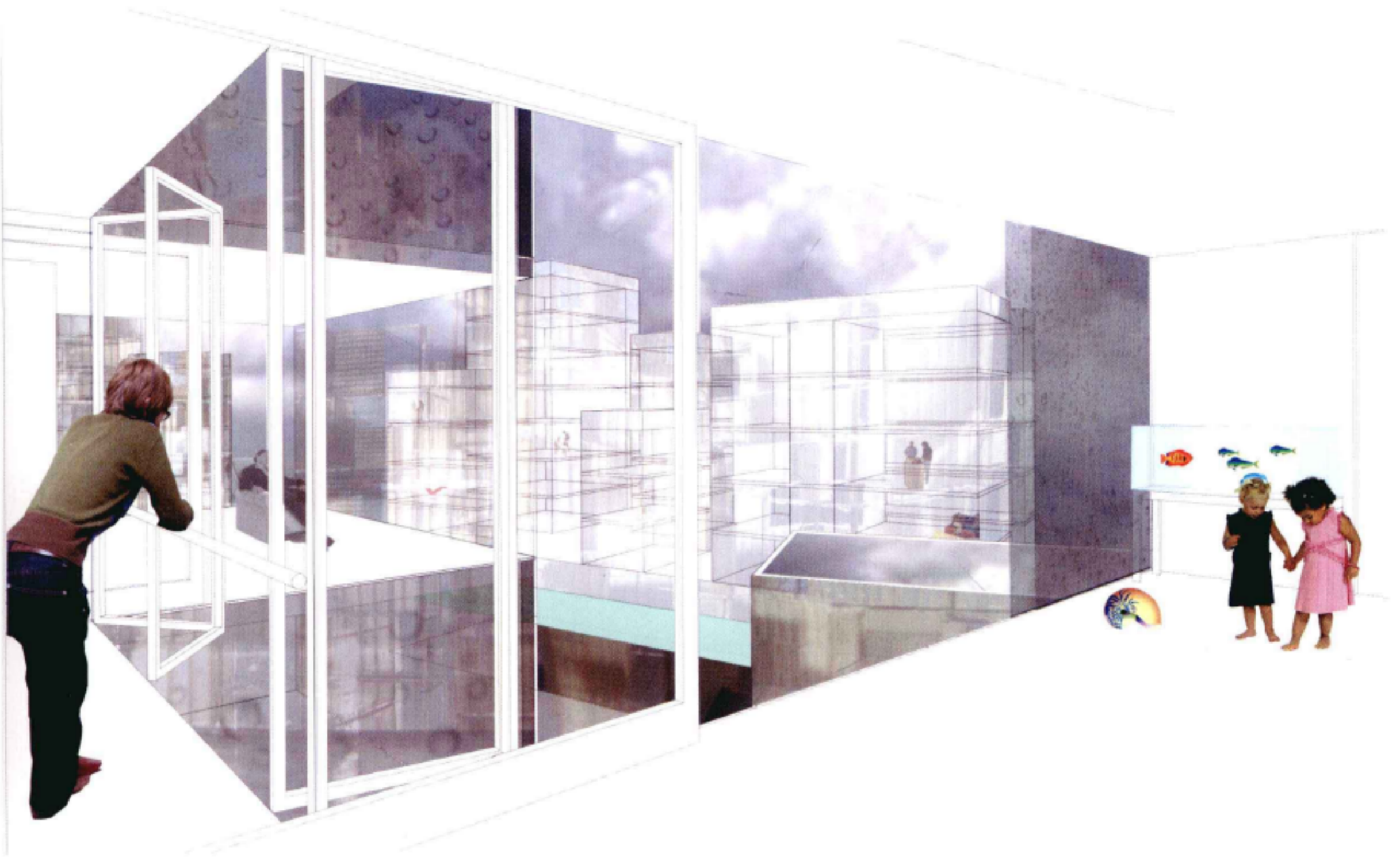


COMBINING MODERNIST PANORAMIC VIEW AND OLD TOWN INTIMATE RELATIONSHIP

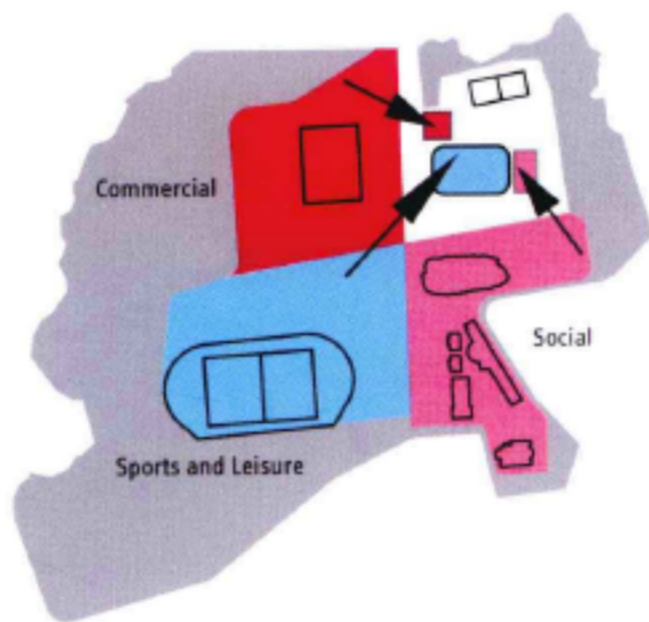




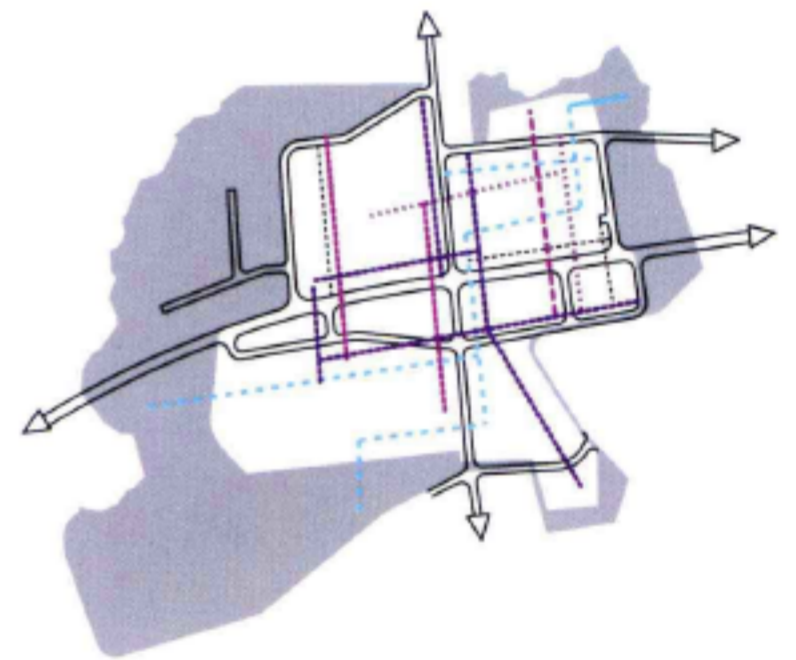




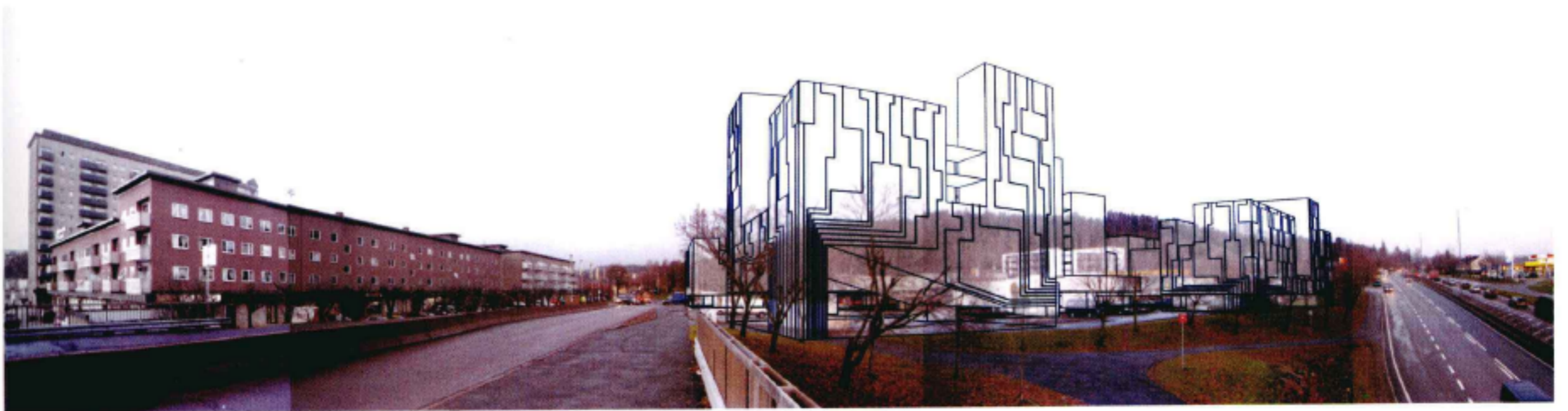
INVENTORY
it's all there

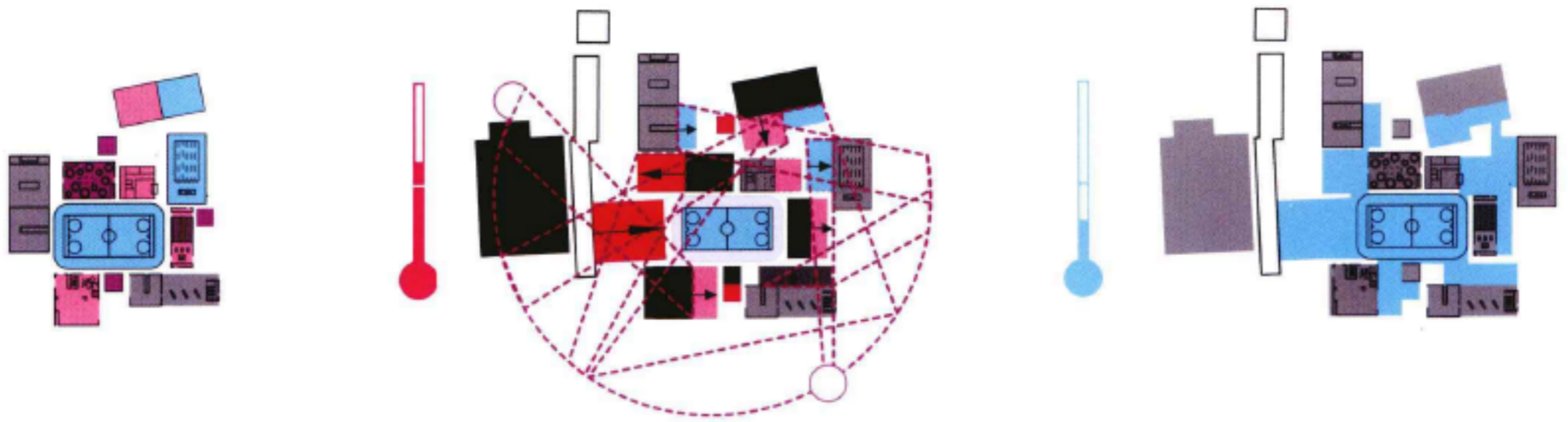


4 PROGRAMMATIC FIELDS AND CROSSOVER AS INITIAL



WEB OF URBAN ROADS AND PEDESTRIAN PATH
supports horizontality of movements

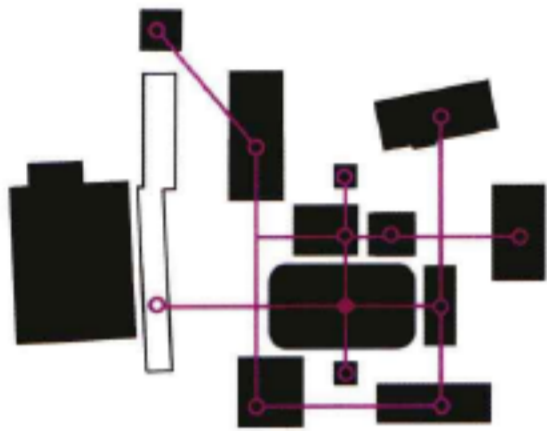




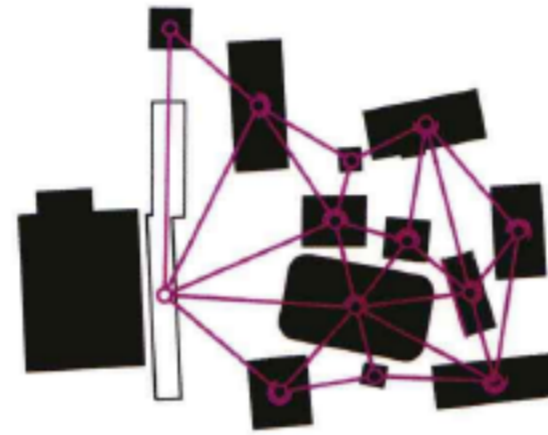
DENSE PACKING OF PROGRAMMES

SUMMER OUTDOOR PROGRAMS
rearranging the packing according to sun exposure:
close but not too close relationships

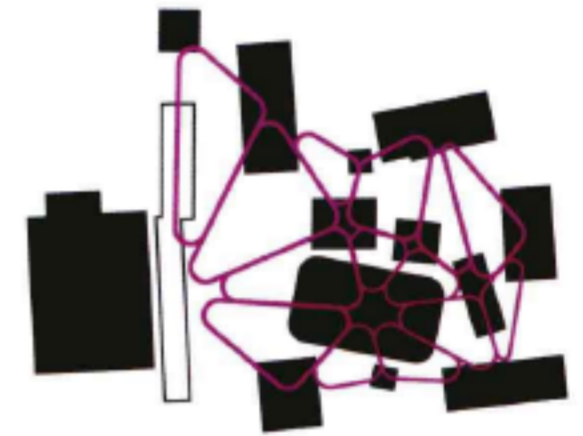
WINTER OUTDOOR PROGRAMS
ice skating surface connects all public programmes



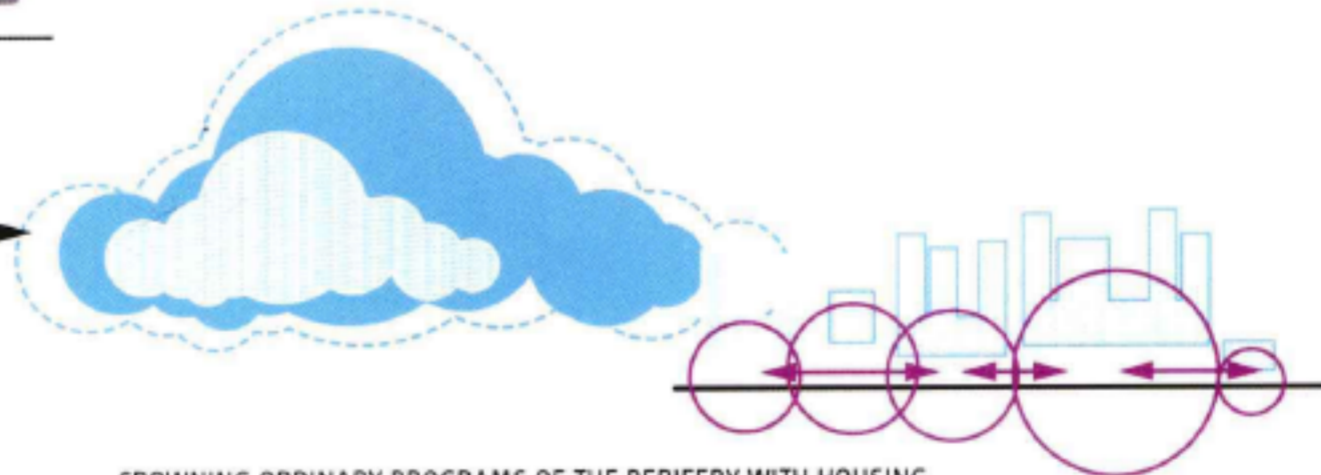
CONNECTIONS AND RELATIONS OF PROGRAMMES



ADJUSTMENTS OF PROGRAMMES
to site boundaries and through rotation of the central ice skating rink for better connectivity



RESULTING SPACES OF INTERACTION



CROWNING ORDINARY PROGRAMS OF THE PERIFERY WITH HOUSING
a cloud inhabited by air dwellers is defining a continuous horizontal public field on ground level



MOSAIC OF ENCLAVES
rorud Senter potentially linking the surrounding neighborhoods

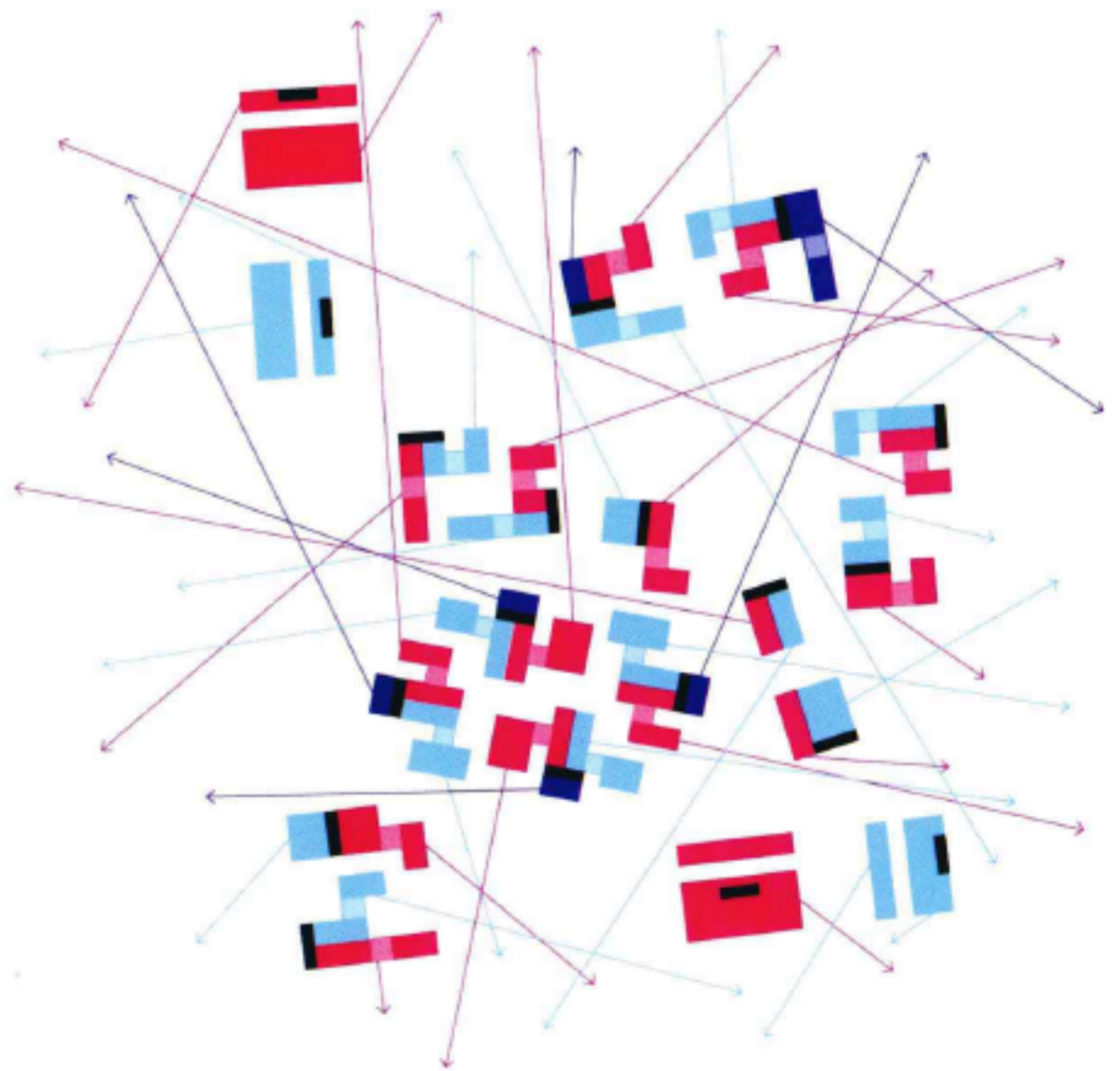
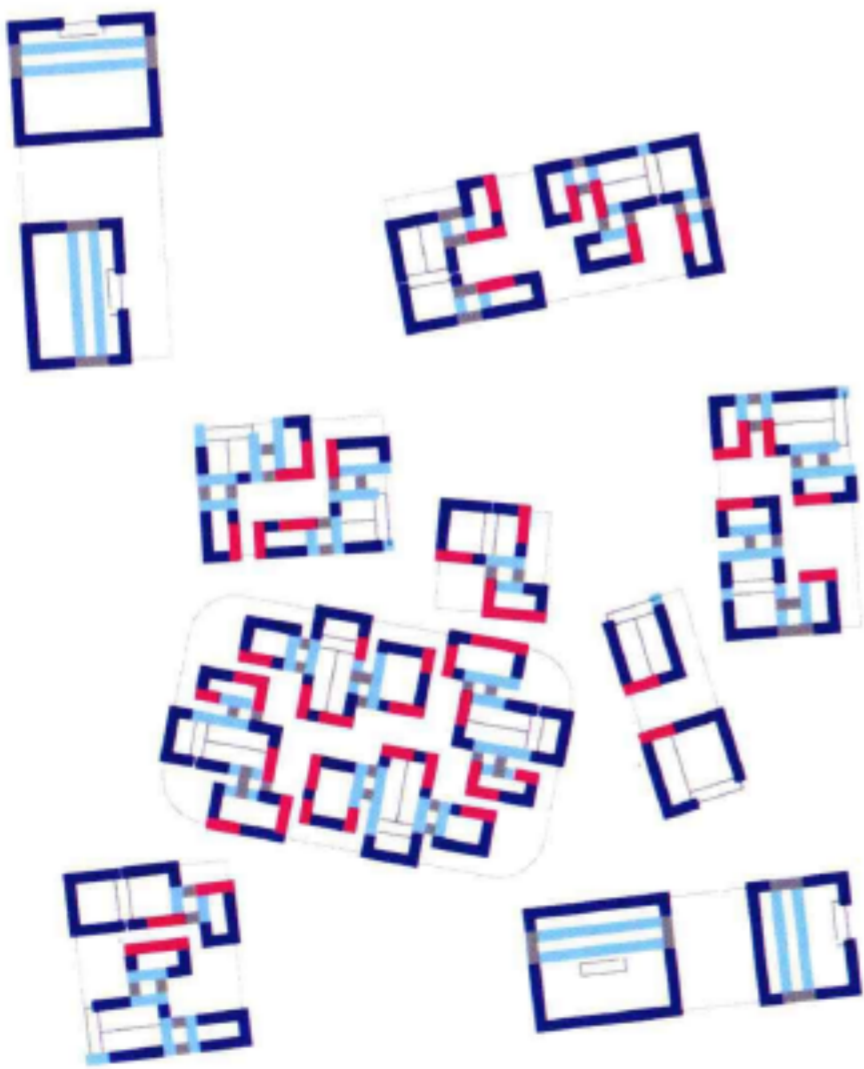
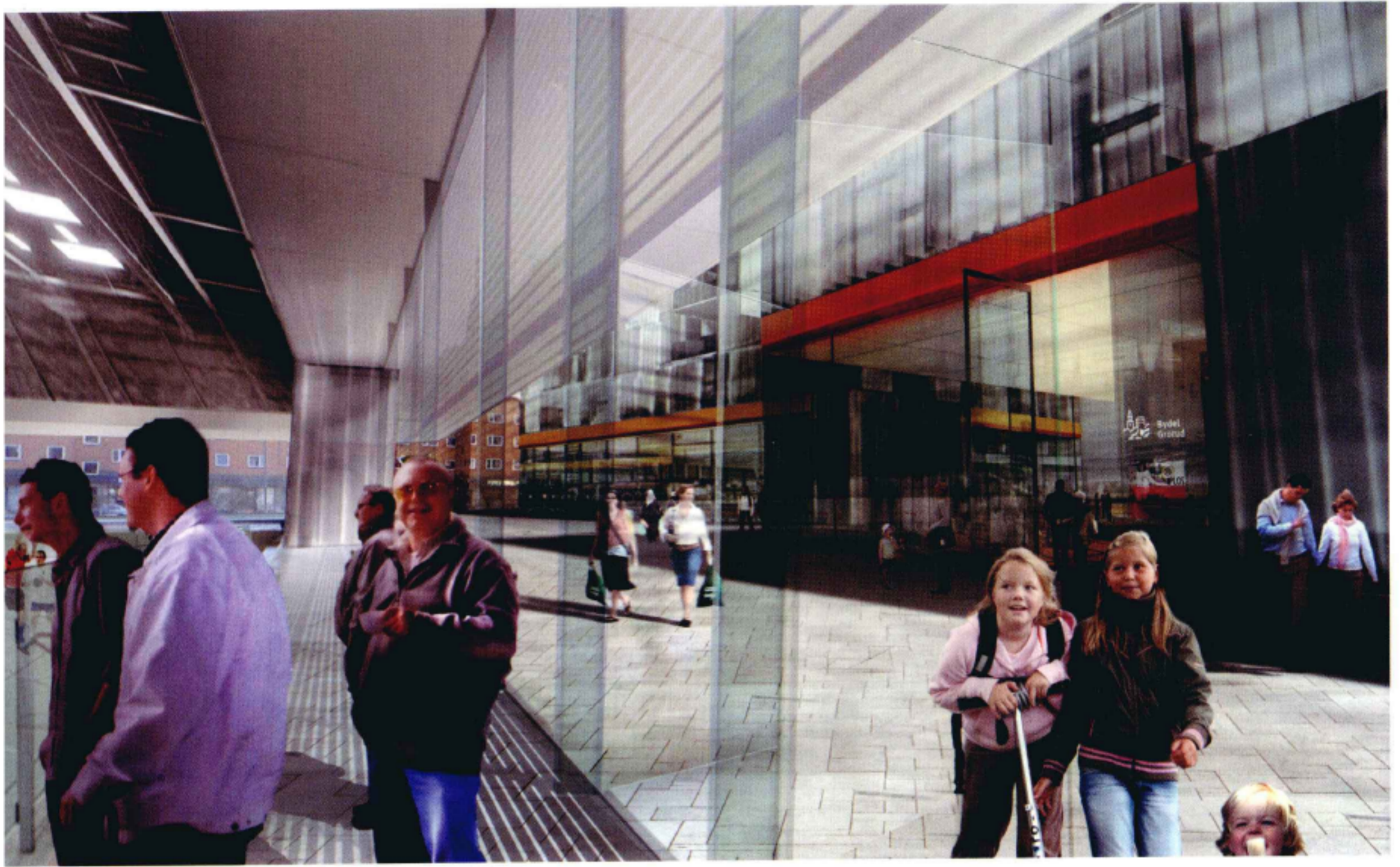


EXISTING ENCLAVES
Gorud, Ammerud, Romsas and Gorud Senter

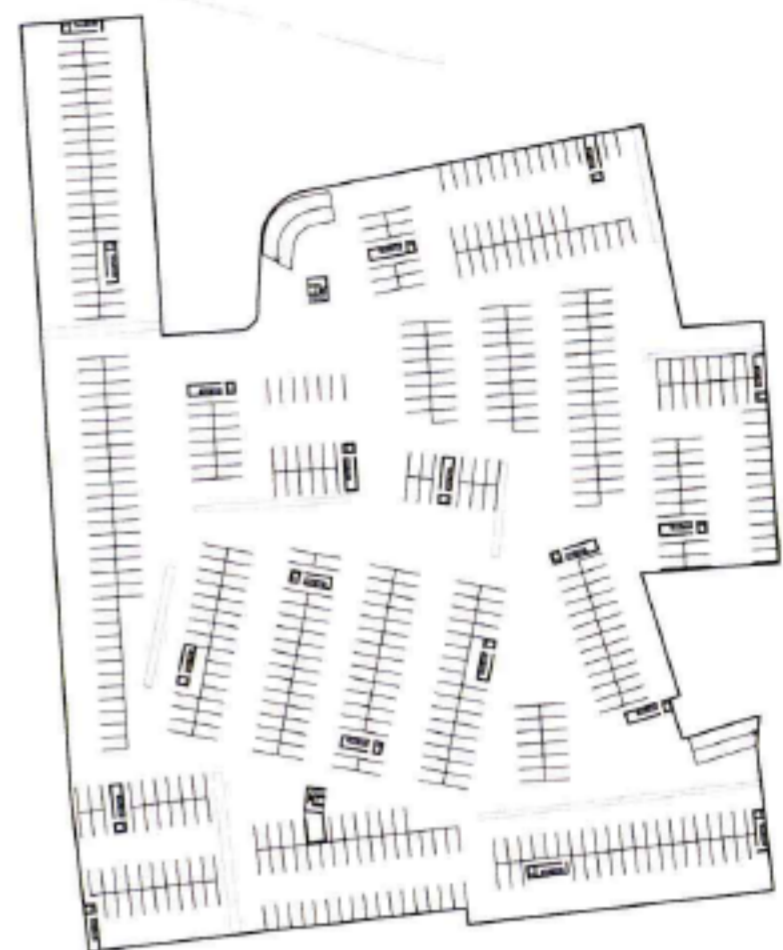
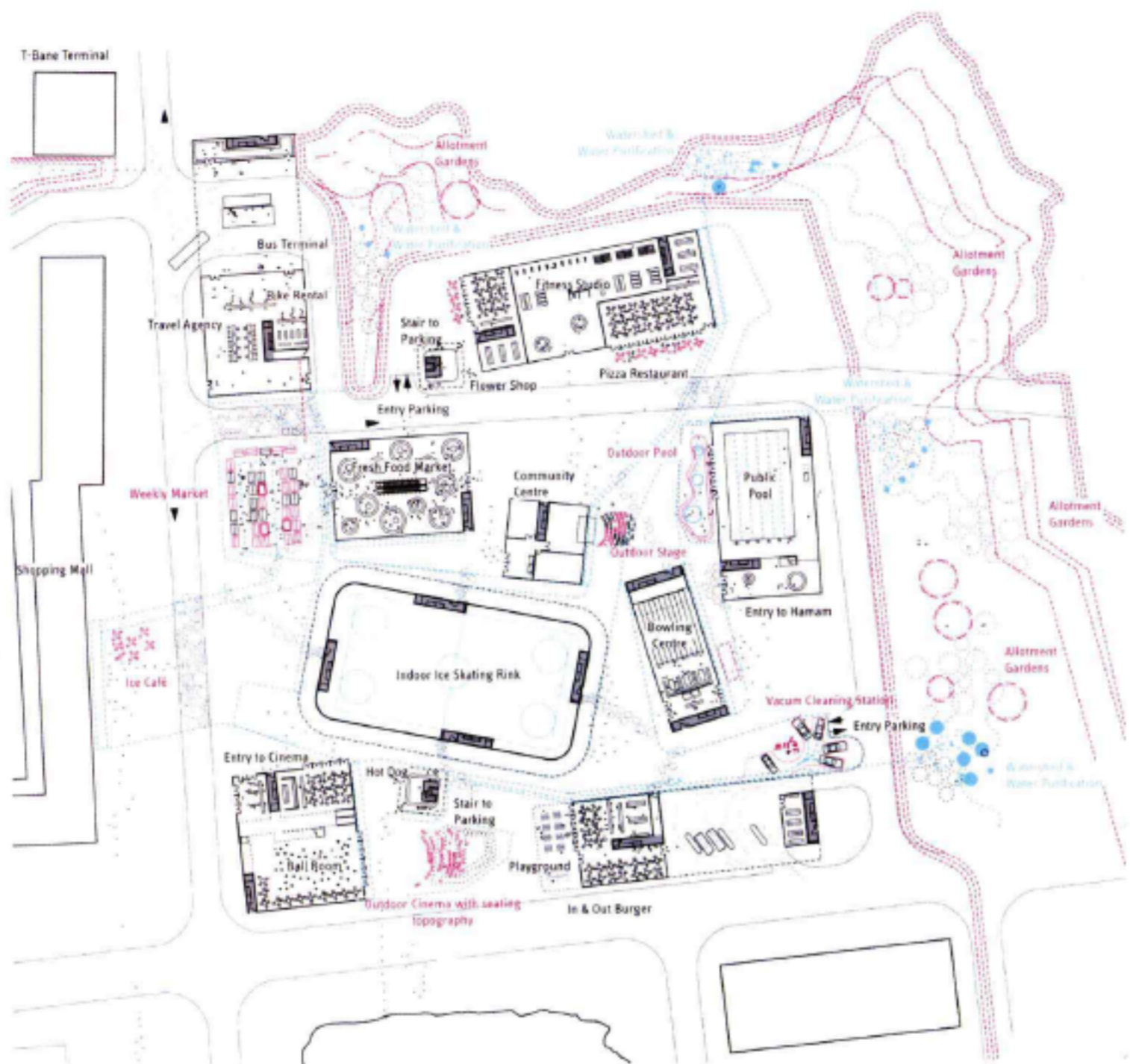


PROMOTED ECOLOGIES
defining and connecting the enclave trough adjacencies









Type A
 Number of Apartments : 13
 Surface Area : 131.6m²
 TOTAL : 1316m²



Type B
 Number of Apartments : 08
 Surface Area : 98.8m²
 TOTAL : 869.2m²



Type C
 Number of Apartments : 30
 Surface Area : 29.6m²
 TOTAL : 889.2m²



Type D
 Number of Apartments : 10
 Surface Area : 138.8m²
 TOTAL : 1388m²



Type E
 Number of Apartments : 10
 Surface Area : 107.6m²
 TOTAL : 1076m²



Type F
 Number of Apartments : 07
 Surface Area : 62.2m²
 TOTAL : 436.4m²



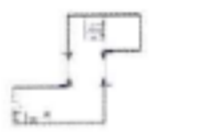
Type G
 Number of Apartments : 04
 Surface Area : 100.3m²
 TOTAL : 401.2m²



Type H
 Number of Apartments : 06
 Surface Area : 69.3m²
 TOTAL : 415.8m²



Type I
 Number of Apartments : 04
 Surface Area : 133.52m²
 TOTAL : 534.08m²



Type J
 Number of Apartments : 04
 Surface Area : 130.8m²
 TOTAL : 443.2m²



Type K
 Number of Apartments : 04
 Surface Area : 118.8m²
 TOTAL : 443.2m²



Type L
 Number of Apartments : 27
 Surface Area : 50.18m²
 TOTAL : 1354.2m²



Type M
 Number of Apartments : 23
 Surface Area : 29.8m²
 TOTAL : 176.3m²



Type N
 Number of Apartments : 03
 Surface Area : 182.6m²
 TOTAL : 547.8m²



Type O
 Number of Apartments : 06
 Surface Area : 90.2m²
 TOTAL : 541.2m²



Type P
 Number of Apartments : 30
 Surface Area : 90.2m²
 TOTAL : 541.2m²



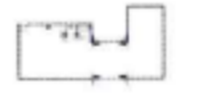
Type Q
 Number of Apartments : 06
 Surface Area : 110.8m²
 TOTAL : 665.2m²



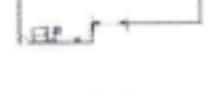
Type R
 Number of Apartments : 05
 Surface Area : 110.8m²
 TOTAL : 554.0m²



Type S
 Number of Apartments : 23
 Surface Area : 108.32m²
 TOTAL : 300.6m²



Type T
 Number of Apartments : 05
 Surface Area : 121.52m²
 TOTAL : 607.6m²



Type U
 Number of Apartments : 04
 Surface Area : 121.92m²
 TOTAL : 487.6m²



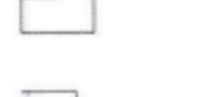
Type V
 Number of Apartments : 04
 Surface Area : 180.32m²
 TOTAL : 401.2m²



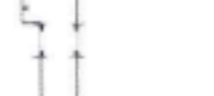
Type W
 Number of Apartments : 06
 Surface Area : 39.6m²
 TOTAL : 237.6m²



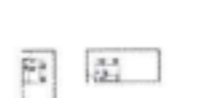
Type X
 Number of Apartments : 05
 Surface Area : 100.32m²
 TOTAL : 501.6m²



Type Y
 Number of Apartments : 05
 Surface Area : 106.32m²
 TOTAL : 501.6m²



Type Z
 Number of Apartments : 05
 Surface Area : 121.92m²
 TOTAL : 609.6m²



Type AA
 Number of Apartments : 05
 Surface Area : 34.2m²
 TOTAL : 171m²



Type A
 Number of Apartments : 06
 Surface Area : 62.2m²
 TOTAL : 367.2m²



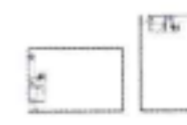
Type B
 Number of Apartments : 01
 Surface Area : 44.8m²
 TOTAL : 44.8m²



Type C
 Number of Apartments : 01
 Surface Area : 60.3m²
 TOTAL : 60.3m²



Type D
 Number of Apartments : 02
 Surface Area : 72.9m²
 TOTAL : 145.8m²



Type E
 Number of Apartments : 03
 Surface Area : 52.9m²
 TOTAL : 158.7m²