

Zhejiang Art Museum

浙江美术馆

Architect: Cheng Taining 主创建筑师: 程泰宁

Design Team: China United Engineering Corporation/CCTN Architecture Design Co. Ltd./
Qian Bolin, Wang Dapeng, Guo Li, Zheng Mao'en, Hu Yang

Construction Area: 31,550m²

Location: Hangzhou, Zhejiang

Completion Date: 2008

Photographer: Zhao Weiwei, Chen Su

Awards: 2009 1st Prize, China Best Construction and Design Awards

2009 1st Prize, Zhejiang Province Qian River Construction Cup

2009 Top Prize of China's 60th Anniversary Architectural Awards

设计团队: 中国联合工程公司 / 中联筑境建筑设计有限公司 / 钱伯霖、王大鹏、郭莉、郑茂恩、胡洋

建筑面积: 31,550平方米

项目地点: 浙江, 杭州

建成时间: 2008年

摄影师: 赵伟伟、陈溯

获奖: 2009年度全国优秀工程勘察设计行业奖建筑工程一等奖

2009年获“浙江省钱江杯(优秀勘察设计)”一等奖

2009年获建国60周年“建筑创作大奖”

Zhejiang Art Museum resides by the West Lake, and crouches against the lush Yuhuang Mountain. Embraced by waters and mountains, the building enjoys the superior environment endowed by heaven. The total construction area is 31,550m², including 15,338m² underground and 16,212m² aboveground.

The museum unfolds itself along the terrain, in a moderate gradient layer by layer all the way to the Lake. Behind the wavy building contour is a harmony in the co-existence of artificial building and natural environment. The Museum, natural in shape, reveals the kind of aroma that radiates the unique culture of the south of Yangtze River. The colour collocation in the whitewashed wall and the black roof tile, and the shape combination of various flat and pitch roofs, were brought

into the creation in a vivid but abstract manner, reflecting a freshly refined and unequivocal cultural taste. The vast white wall, some black roof components scattered, and the smooth and free, organic and sensible flow of lines, together produced an aesthetic image of traditional ink painting and calligraphy. The structured application of steels, glasses and stones emphasized the texture contrast. Diversified cones and cuboids organized into a number of attractive flat and pitch roof combinations, conveying a strong sense of sculptural design and modernity.

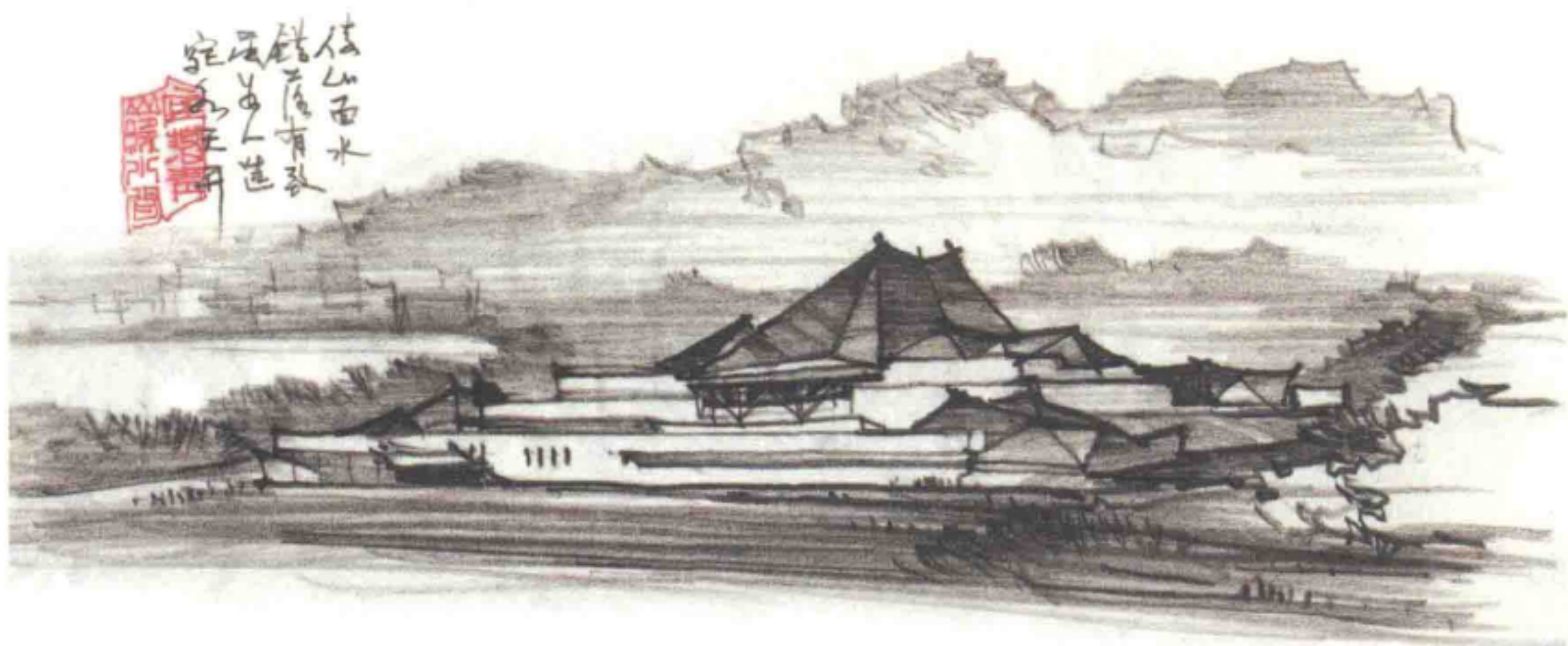
The unique and creative combination and organization of shapes and spaces have made the concept of profound integration of traditional charm and modern spirit especially pronounced.





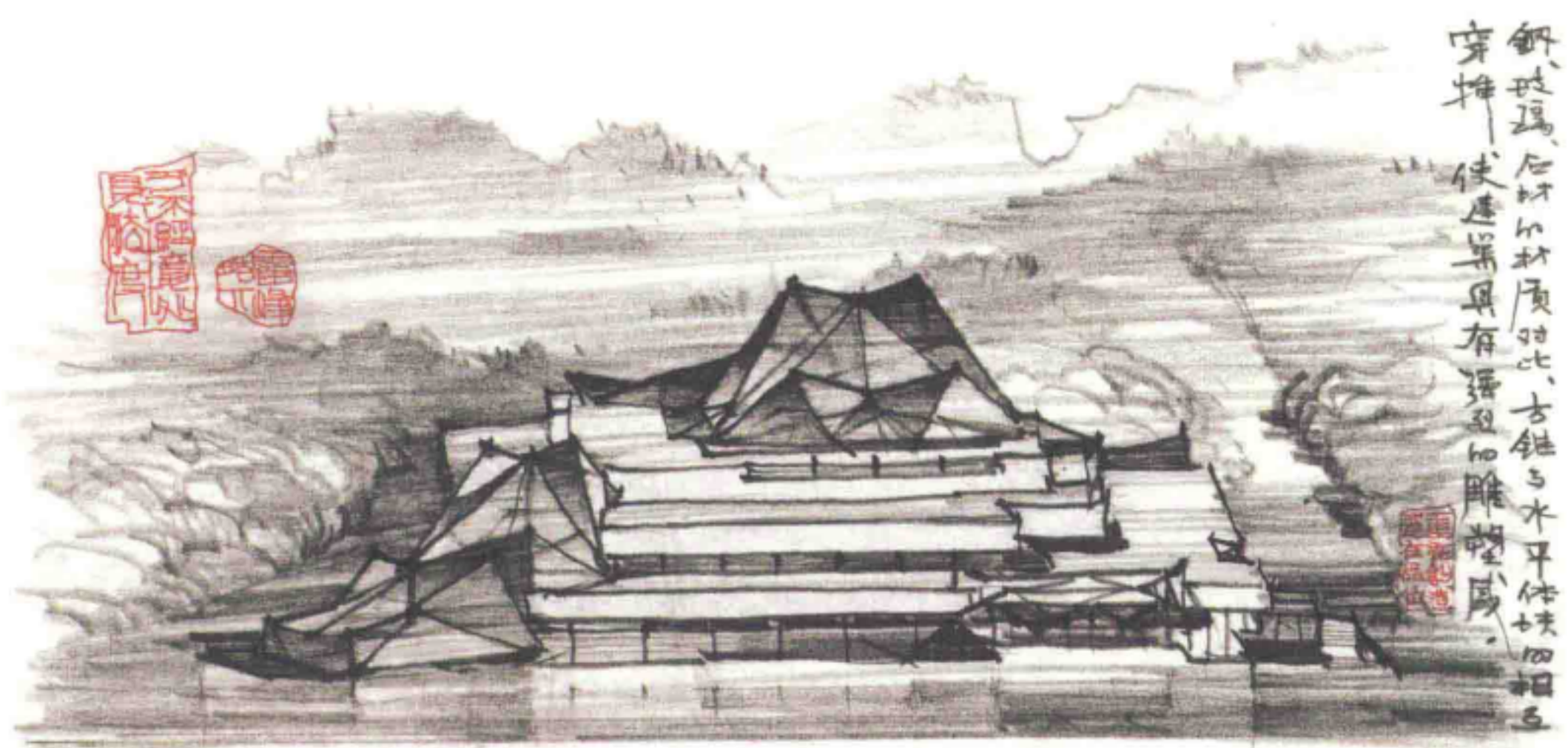
1. The use of steel, stone and glass reinforces the contrast of materials and adds modern sense for the museum
2. The undulating lines achieve harmony with the surroundings
3. The combination of white walls and black cone roofs fulfill the museum with Chinese painting flavour

1. 钢材、石材和玻璃加强了材质的对比，增添了建筑的现代感
2. 建筑起伏的线条与周边环境达到了和谐统一
3. 白色墙面与黑色的锥形屋顶穿插组合，使整个建筑充满了水墨韵味



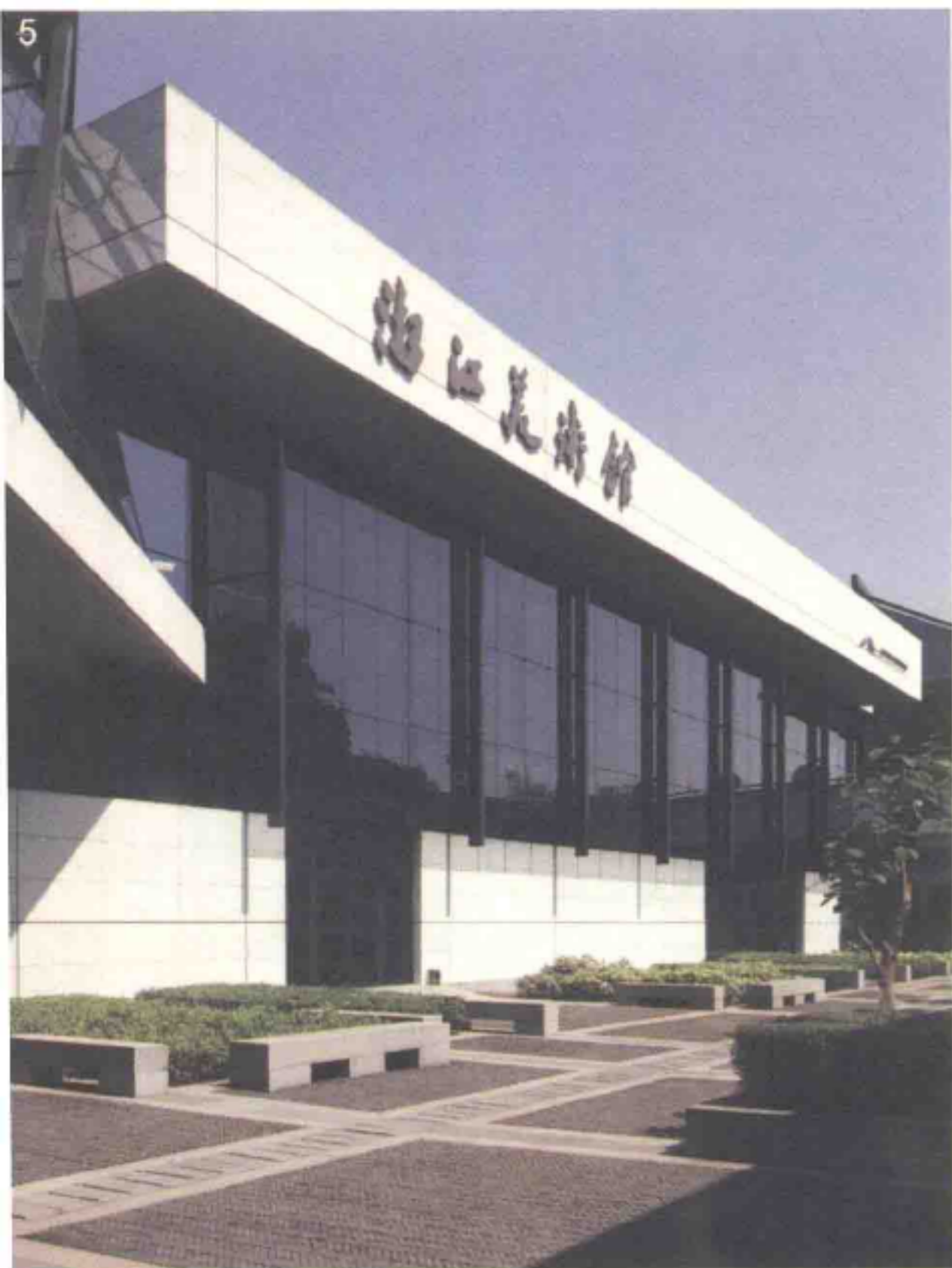


3





4



5

美术馆位于西子湖畔，背靠苍翠的玉皇山麓，建筑依山傍水，环境得天独厚。总建筑面积31,550平方米，其中地下15,338平方米，地上16,212平方米。

建筑依山形展开，并向湖面层层跌落。起伏有致的建筑轮廓线达到了建筑与自然环境共生的和谐状态。建筑造型自然而又充分地流露了江南文化所特有的韵味，粉墙黛瓦的色彩构成、坡顶穿插的造型特征，在“似与不似之间”被带入了我们的创作之中，体现了一种清新脱俗而又空灵含蓄的文化品位。特别是以大片白色墙面为图底，以黑色屋顶构件勾勒，线条张扬洒脱而又不失法度，极富传统水墨画和书法的审美韵味；钢、玻璃、石材的运用，强调了材质的对比，坡顶变形生成出多种形态的锥体与水平体块的穿插组合又使建筑充满强烈的雕塑感和现代感。

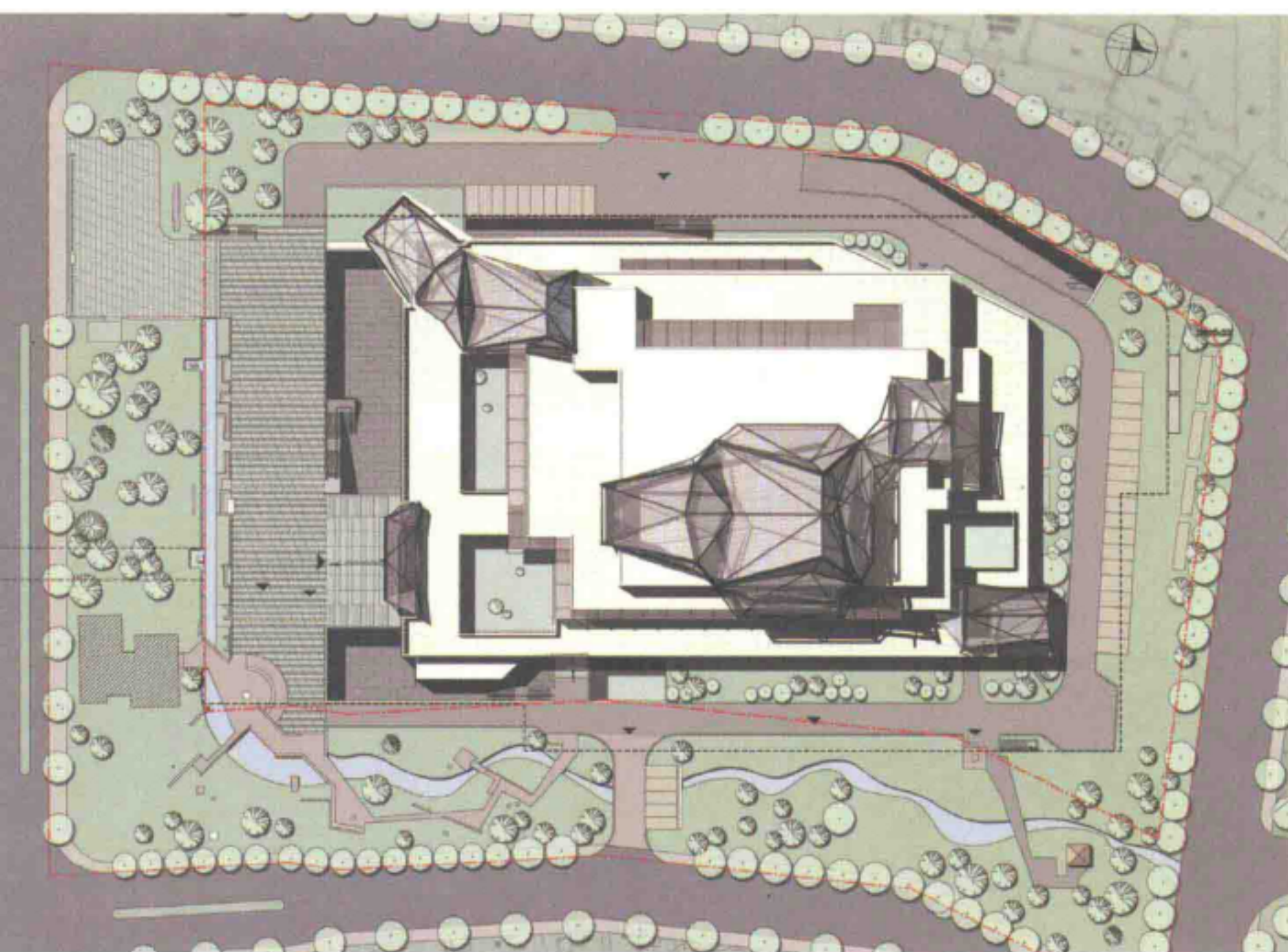
独特的建筑形体和空间充分体现了传统意韵与现代精神的深层次融合，具有原创性。

- 4. Main entrance
- 5. Sunk plaza landscape
- 6. Details of cone roof
- 4. 主入口
- 5. 下沉广场景观
- 6. 屋顶构件细节





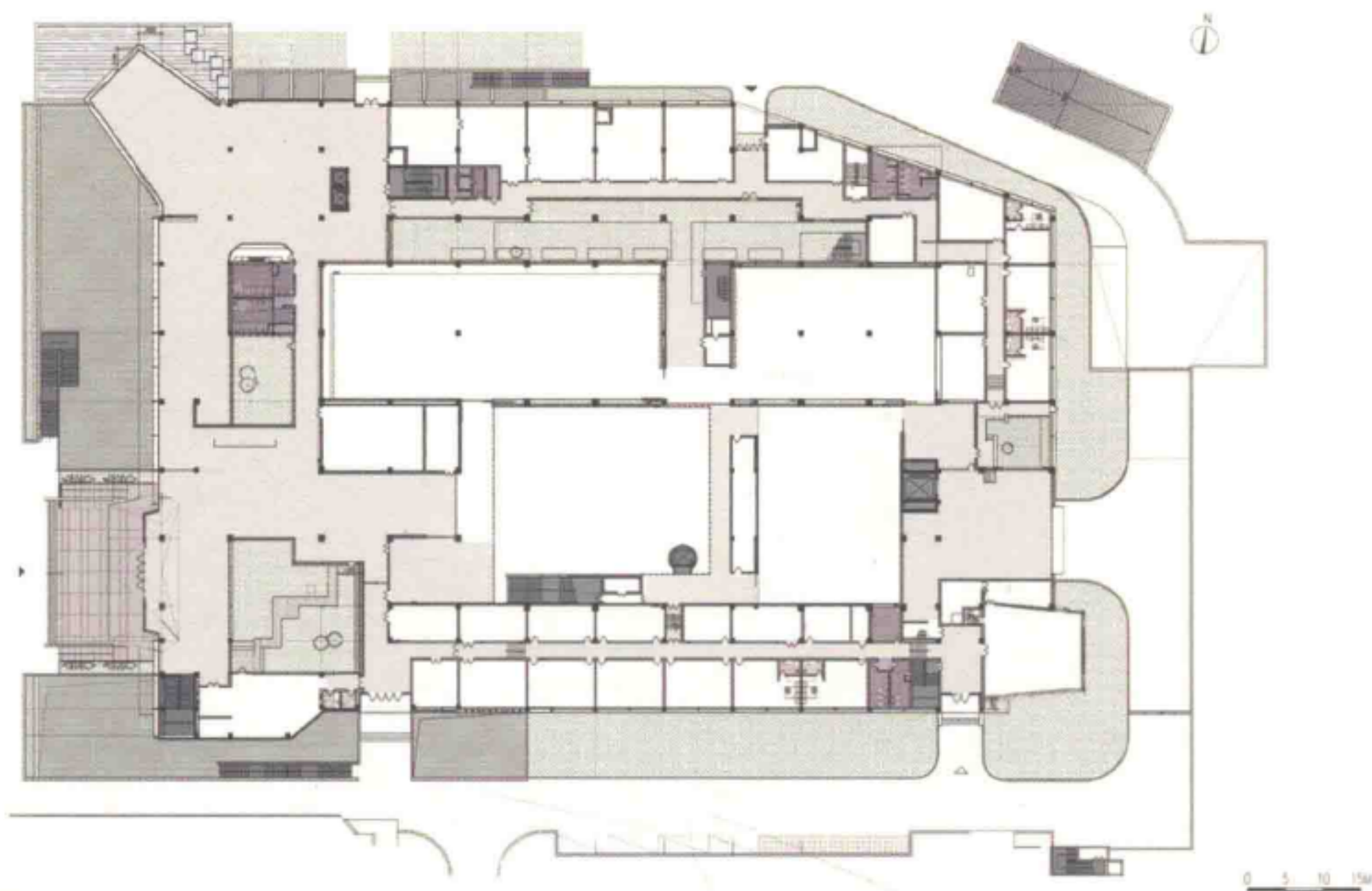
7



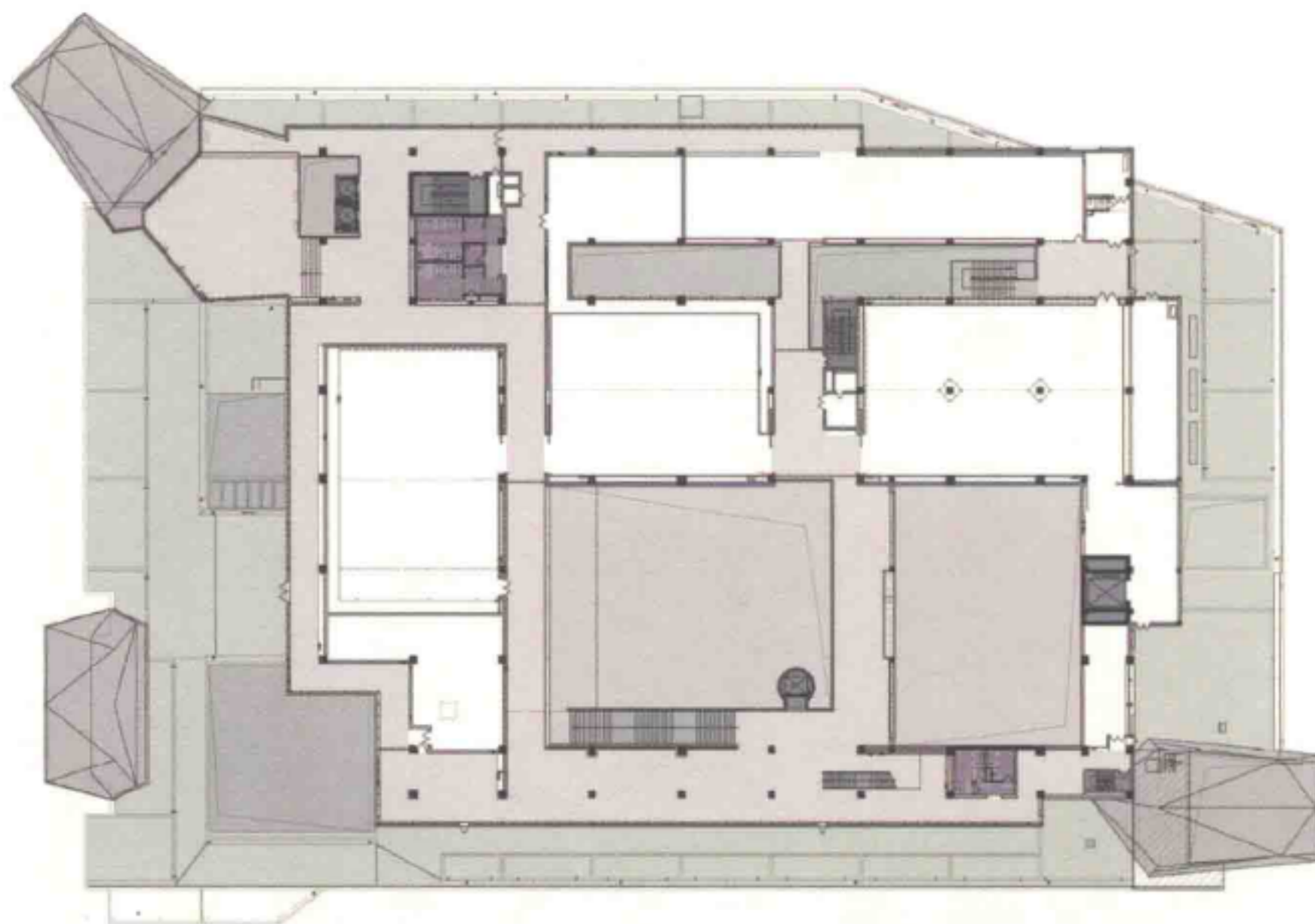
- 7. Interior view of central hall
- 8. View of roof components from central hall
- 9. Narrow courtyard
- 7. 中央大厅内景
- 8. 中央大厅看屋顶构件
- 9. 窄院

Site Plan
总平面图





Ground Floor Plan
一层平面图



1st Floor Plan
二层平面图

0 5 10 15M

