

## Features 项目亮点

The design adopts the curve and wave as the theme; the 230 m high tower is like the hurricane running up into the sky and the annex buildings at the bottom are attached to one side of the main tower, thus the spiral plane naturally forms a moving business line.

设计以曲线和波浪为主题，高约230 m的主塔犹如拔地而起的龙卷飓风直冲云霄，底部裙房依附于主塔一侧，其螺旋形的平面自然地形成了商业动线。

## Key Words 关键词

## Urban Complex in CBD CBD 型城市综合体

# Suzhou GCL Commercial Complex

## 苏州协鑫商业综合体

**Undulate 波浪形**

**Transparent Vision 视觉通透**

**Spiral Plane 螺旋形平面**

Location: Suzhou, Jiangsu, China  
Architectural Design: Shanghai Jiang Architects &  
Engineers (JAE)  
Floor Area: 430,000 m<sup>2</sup>

项目地点: 中国江苏省苏州市  
建筑设计: 上海江欢成建筑设计有限公司  
建筑面积: 430 000 m<sup>2</sup>

### » Overview

The project is located in the north of Shishan Road of the new district of Suzhou, the east of Suzhou Paradise and opposite of the Shangri-La across a street. It has a land area of 71,500 m<sup>2</sup> and a floor area of 430,000 m<sup>2</sup>. The project is positioned as the urban complex and service apartments.

### » 项目概况

项目地块位于苏州新区狮山路北侧，西望苏州乐园，与香格里拉隔街而立。地块面积71 500 m<sup>2</sup>，建筑面积430 000 m<sup>2</sup>。其被定位为城市综合体和服务式公寓。

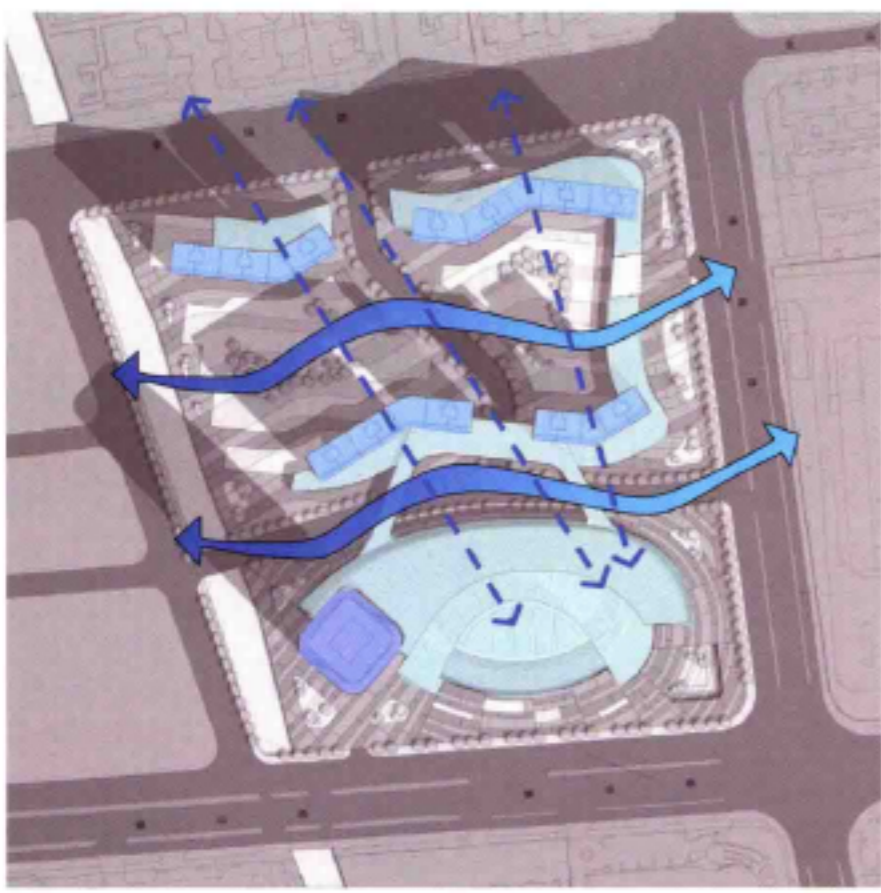
### » Design Theme

The design adopts the curve and wave as the theme, the 230 m high tower is like the hurricane running up into the sky and the annex buildings at the bottom are attached to one side of the main tower, thus the spiral plane naturally forms a moving business line.

In the north of the service apartment community, the undulate apartment towers are well-proportioned, which not only encloses a large concentrated green land, but also guarantees the transparency of the visual corridor in the horizontal level.



Site Plan 总平面图



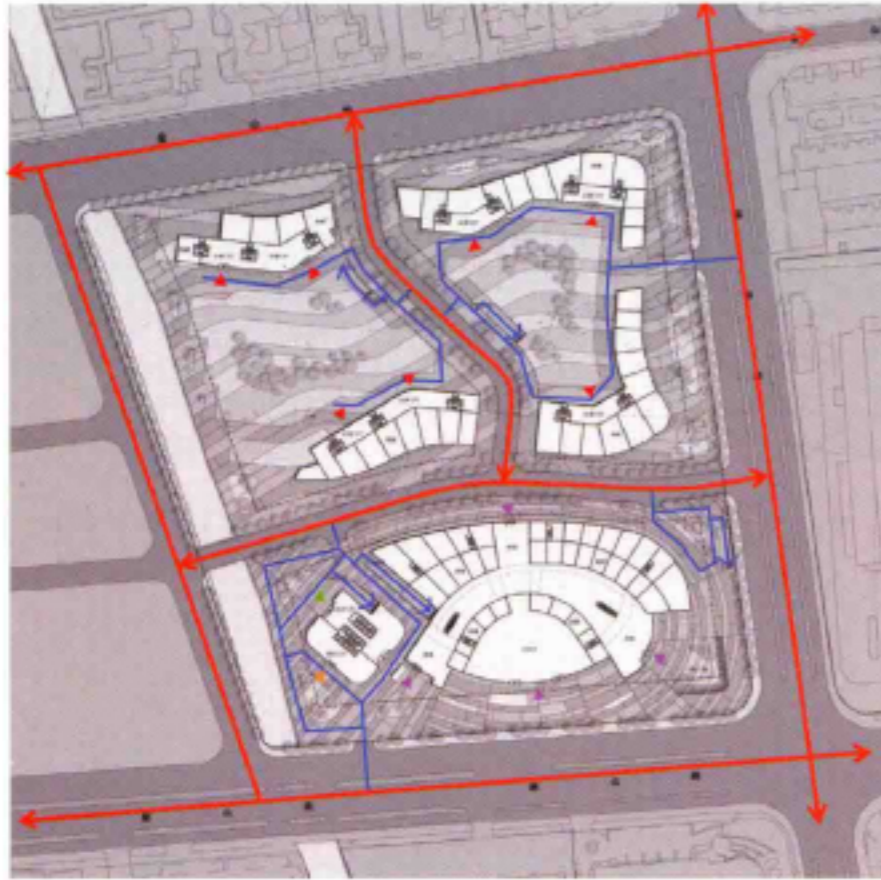
建筑高度分析

- 0 m-30 m
- 100 m-120 m
- 200-230 m



商业布局分析

- 购物中心
- SOHO / 商铺
- - - 商业流线
- 商业街



车行交通流线分析

- 城市道路
- 基地内道路
- 地下车库出入口
- ▲ 商场入口
- ▲ 办公入口
- ▲ 酒店入口
- ▲ 服务式公寓入口



易于分期建设



绿化景观分析

- 基地绿化
- 景观绿化
- 水体景观



空间等级分析

- 城市开放空间
- 河岸休闲空间
- 小区内嵌空间



## » 设计主题

设计以曲线和波浪为主题，高约 230 m 的主塔犹如拔地而起的龙卷飓风直冲云霄，底部裙房依附于主塔一侧，其螺旋形的平面自然地形成了商业动线。

北面的服务式公寓社区里，呈波浪形的板式公寓塔楼错落有致，既围合了一大片集中绿地，也保证了水平向视觉走廊的通透。



Soho Typical Floor Plan 服务式公寓标准平面图



