



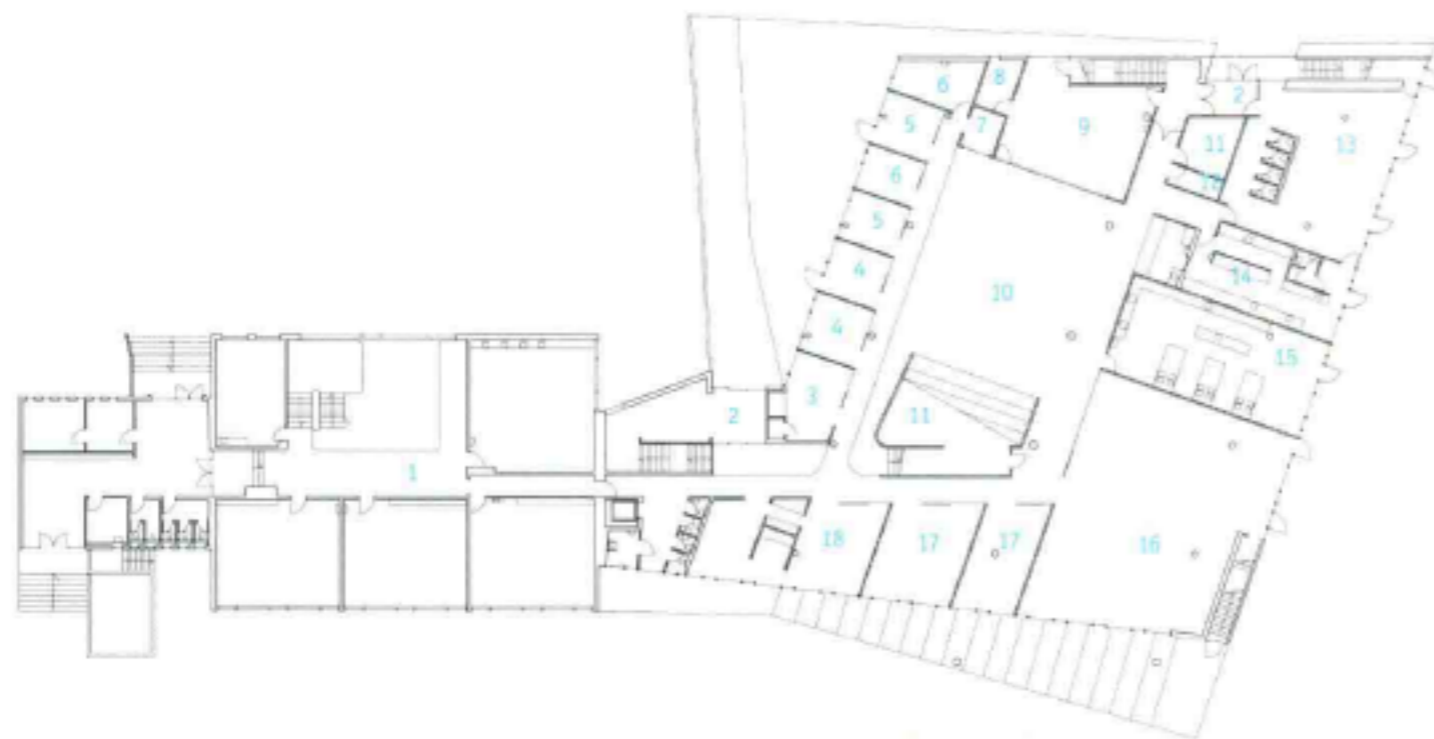
Stepped ramp and canopy on south side 南侧的台阶坡道和半盖

## Vogaskóli School

The new extension is founded on the principles of open schooling. The building is centred on a double-height hall surrounded on the lower floor by library, music, kitchen and administration areas and teaching zones for the youngest and middle age groups on the upper. Divisions between areas are minimised and if necessary are of glass or movable partitions. A grand stair connects the hall to the upper level and this can be used either as an audience platform or a stage.

As a consequence of the deep plan, the periphery is predominately glazed with full height windows interspersed with attenuated grilles. The exception is the more massive, north fair-faced-concrete façade due to the proximity of the noisy Skeidavogs road. The heart of the building receives additional daylight through the clearstorey windows in the hall.

The main entrance is located at the junction of the existing building and the new extension. Students may be dropped-off securely in the entrance court and the same route serves the basement staff car park. The entrance is also connected to the school grounds on the south side of the buildings where the land has been lowered to create an external space for teaching and play, sheltered from the inclement weather. On fine days teaching on the upper levels can be extended outside on the east-facing balcony that also doubles as a secure fire escape route.



## 沃加斯高利中学

沃加斯高利中学扩建工程以打造开放式学校为目标。建筑的中央是一个双层楼高的大厅，周围环绕着图书馆、音乐教室、厨房、行政区和中低年级教学区。各个区域之间尽量极少使用隔断，多数都被玻璃门或是可移动门所替代。宽大的楼梯将大厅和上面的楼层连接起来，楼梯也可以作为观众席或是舞台。

建筑外墙的大部分是点缀着细长栅格的落地窗，唯有朝向喧闹的Skeidavogs大街的北侧墙面是由美观的混凝土构成。大厅的天窗为室内提供了足够的自然采光。

建筑的主入口和原有的教学楼相连，学生可以由入口中庭或是教职工地下停车场进入。入口同样地与建筑南侧的操场相连。操场的地势较低，带屋顶的保护区可作为户外教学或运动之用。在晴朗的天气，师生们可以在二楼东侧的阳台上活动，阳台也可作为防火安全通道。

- |                        |            |
|------------------------|------------|
| 1. existing building   | 1. 原有建筑    |
| 2. entrance lobby      | 2. 门厅      |
| 3. reception           | 3. 前台      |
| 4. headmaster          | 4. 校长室     |
| 5. office              | 5. 办公室     |
| 6. meeting room        | 6. 会议室     |
| 7. DJ booth            | 7. DJ室     |
| 8. music practice room | 8. 音乐练习室   |
| 9. music               | 9. 音乐教室    |
| 10. hall               | 10. 大厅     |
| 11. store              | 11. 商店     |
| 12. cleaners           | 12. 洗衣房    |
| 13. staff room         | 13. 更衣室    |
| 14. kitchen            | 14. 厨房     |
| 15. teaching kitchen   | 15. 教学厨房   |
| 16. library            | 16. 图书馆    |
| 17. seminar            | 17. 小组讨论室  |
| 18. special teaching   | 18. 特殊教学教室 |



南面的台阶坡道和半盖 Stepped ramp and canopy on south side



入口 Entrance



大厅 Hall

Photo: Sigurgeir Sigurjónsson

Educational

Completion Date: 2007

Architect: Studio Granda Architects