

# Stratheden Eighteen-Bed Dementia and Mental Health Unit

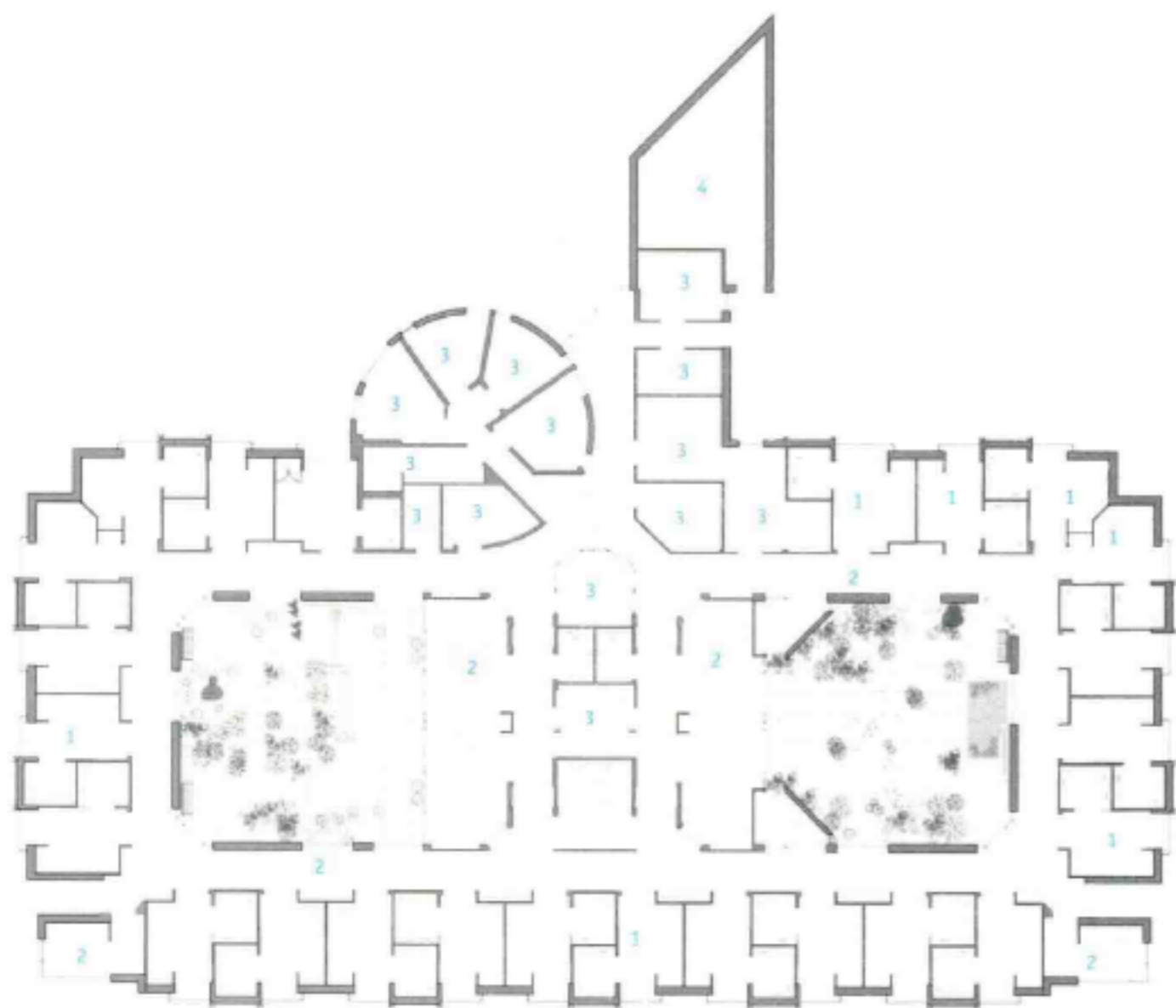
# Stratheden医院痴呆与精神健康病房

The proposal is to provide a low security residential dementia unit in the grounds of Stratheden Hospital. The accommodation consists of eighteen single bedrooms with en-suite shower rooms and associated accommodation for both patients and staff. The building is single storey with a U-shaped plan. Bedrooms are split into the two wings and the communal facilities located centrally. The whole building focuses on a south-facing secure garden for patients with the southern edge of the garden walled and framing the view south towards Walton Hill and White Hill. The design allows for patients to wander freely around the building and into the secure sensory garden. The circulation around the garden has small alcoves with built-in seating for patients to stop and sit and look out into the garden.

项目为Stratheden医院的寄宿制痴呆病房，共有18间：病患和工作人员所提供的配备浴室的套房。建筑呈U形结构，病房设在两翼，而公共设施设在中央。整个建筑朝向南面的带围墙安全花园，可以看到沃尔顿山和怀山上的风景。患者们可以在建筑周围或是花园里随意活动。花园四周环绕着小凉亭，患者可以坐在里面休息欣赏花园的风景。

Each bedroom has a bay window with views out into the grounds of Stratheden. Secondary light comes into each individual room via a roof light located below the pitched roof ridge line. Each bedroom is identifiable by individual pitched roofs giving the patients a sense of their own identity within the building. All the other accommodation and circulation areas have flat roofs at different heights.

每个套房都有一个凸窗，可以看见Stratheden医院里景象。斜屋顶的屋脊上有一排天窗为室内提供自然光。每个套房的斜屋顶都不尽相同，让患者产生了一种独特的归属感。其他的设施和公共区域则采用了高低落的平屋顶。



- 1. 卧室
- 2. 病房
- 3. 工作区/咨询区
- 4. 服务区
- 1. bedroom
- 2. patient areas
- 3. staff/consulting
- 4. services



Exterior 建筑外观





庭院 Courtyard



花园 Garden



接待处 Reception

Photo: Richard Murphy Architects Ltd.

Hospital

Completion Date: 2009

Architect: Richard Murphy Architects Ltd.