



Beijing Nexus Centre

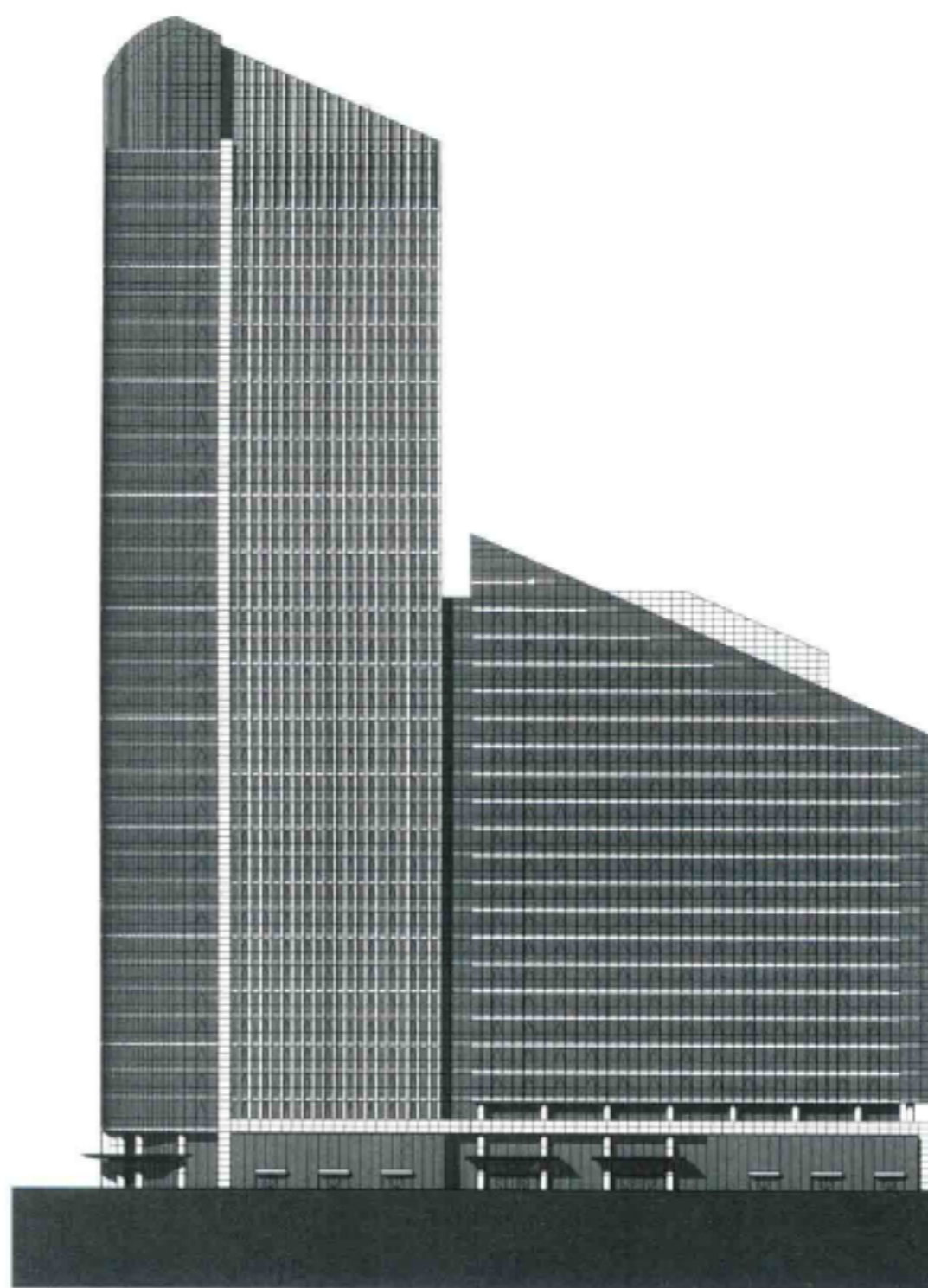
The Nexus Centre is a structure of sophisticated form and superb function. Its column-free and unusually large 2,200-square-metre floor plate allows ultimate freedom for tenants to fully customise their space and maximise efficiency according to individual needs. Located on a long, linear site, the dual-tower complex slopes from south to north from its 551-foot apex in order to limit shadow casting on its northern residential neighbours. The eastern façade fronts the heavily-trafficked ring road and gives retailers prominence along the base. The western façade, by contrast, overlooks the serene setting of an urban park. On the south, the building curves in relation to its corner site, opening up to a large landscaped plaza that segregates vehicular and pedestrian traffic while creating an inviting amenity for tenants.

The design of the complex uses a combination of stainless steel and granite to define distinct fenestration that visually breaks down the overall mass into more slender elements. Expansive floor-to-ceiling glass is applied throughout in order to bring natural light deep into the office floors. Extensive vertical shading devices on the east and west façades control heat gain, and operable windows on all floors promote the introduction of fresh air throughout the work environments.

北京嘉盛中心

嘉盛中心造型独特，功能齐全。2,200平方米的开放式楼面让租户可以自由利用空间，根据自身需求将效率最大化。这座双重塔楼南高北低，位于南面168米高的最高端距离建筑的最北面有很长的距离，最大限度地避免了高楼遮光的问题。建筑的东立面朝向交通繁忙的东三环路，为零售商提供了优秀的商业空间。建筑的西立面朝向一个开阔的景观广场，与交通车道相隔绝，环境宜人。

建筑的设计采用了不锈钢和花岗岩的组合结构，独特的外窗设计覆盖了整个建筑的外墙，使建筑看起来更加细长，大片的落地窗为办公楼层提供了丰富的自然采光。建筑东侧和西侧的外墙采用了巨大的垂直遮阳设备，控制了建筑的热吸收。各个楼层的可调控窗户让新鲜空气能够顺利流入工作空间。



East elevation 东立面

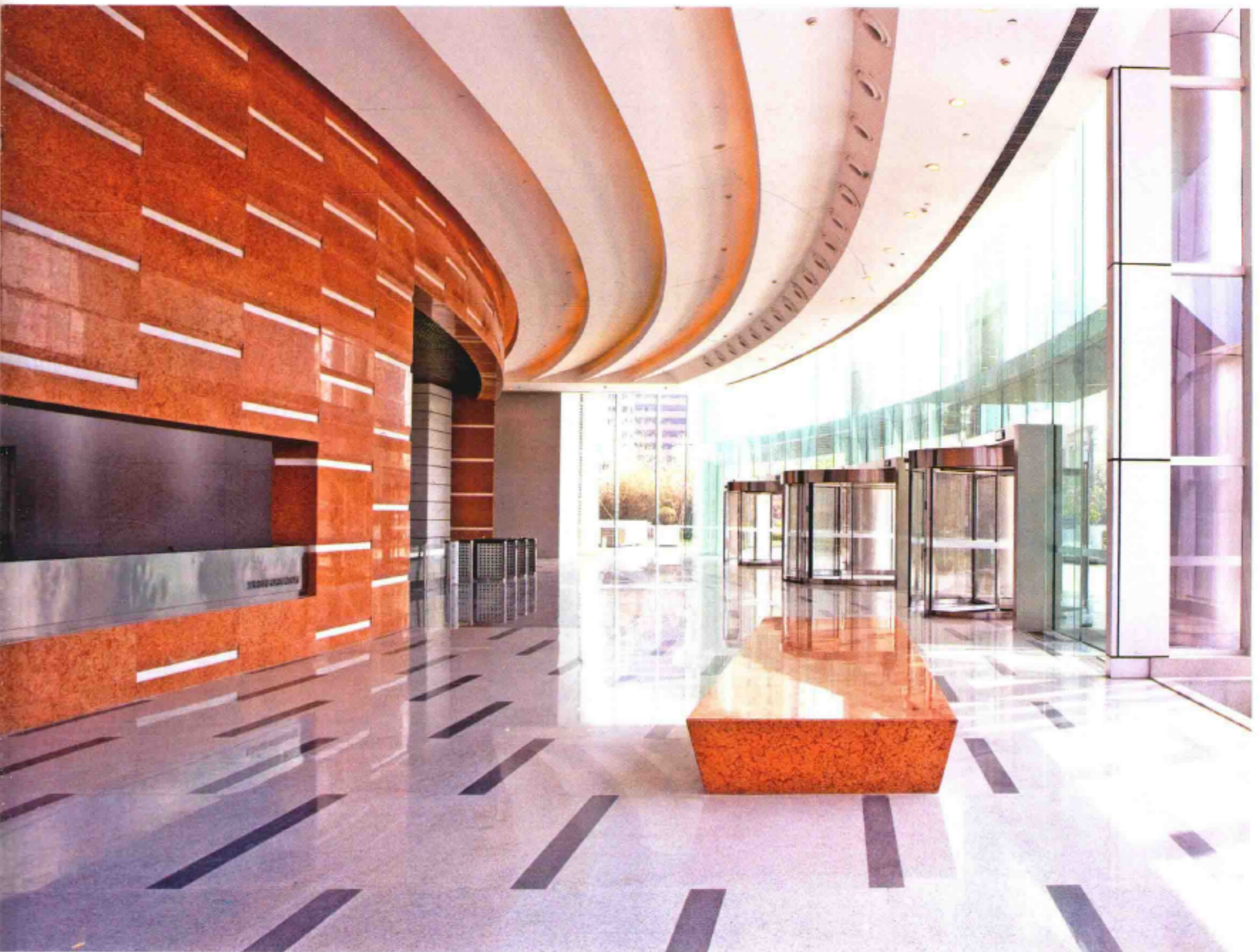
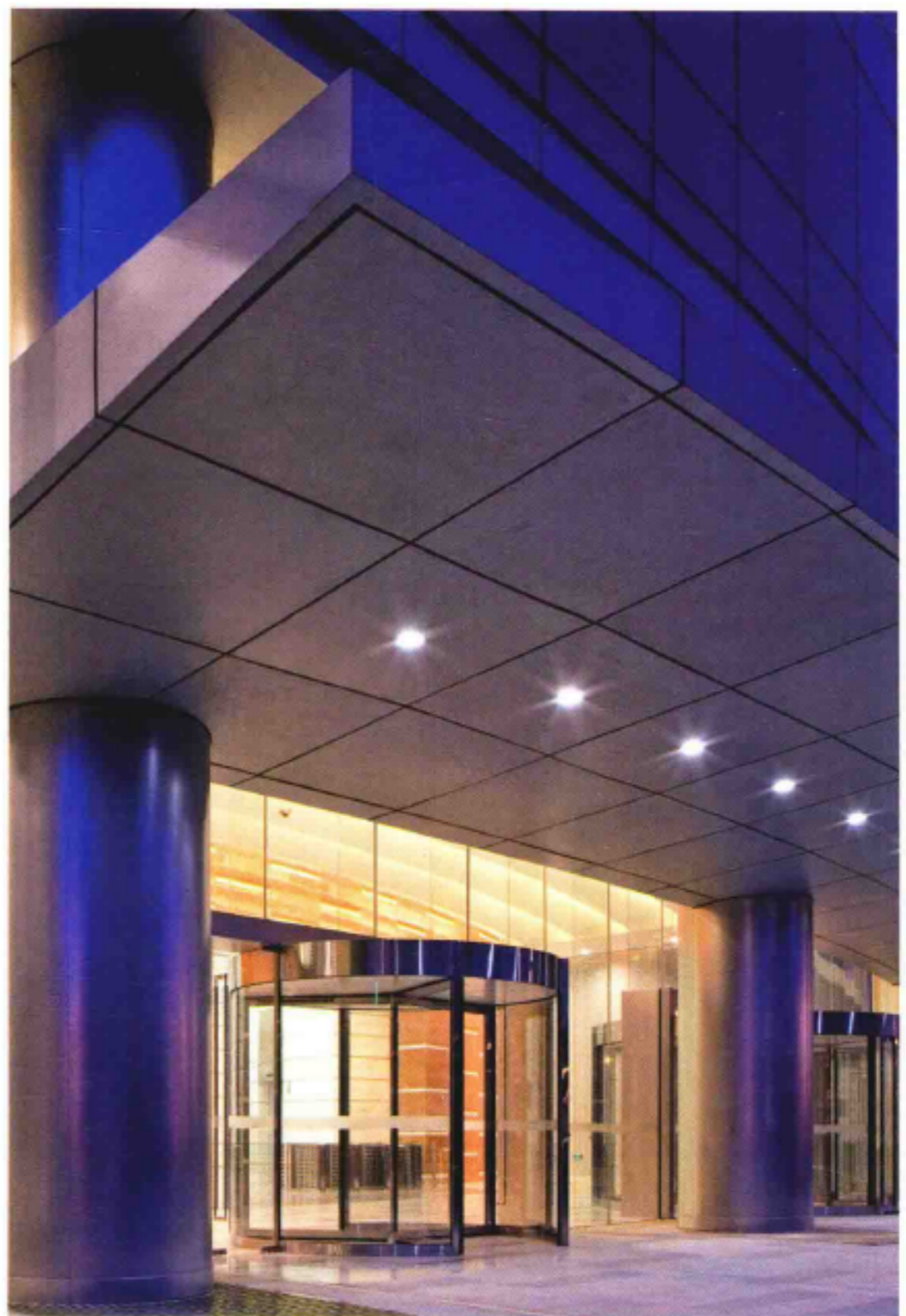


Photo: Doug Snower, Doug Snower Photography

Completion Date: 2008

Architect: Goettsch Partners

Corporate