

## Features 项目亮点

Designers made the most of the width and depth of the site, and divided it into 3 proper blocks through commercial pedestrian street and central plaza, to form cohesive commercial atmosphere and create one-stop urban complex.

设计充分利用基地的面宽和进深，通过商业步行街、中心广场将地块分割成尺度合适的3个区块，形成内聚的商业氛围，打造一站式的城市综合体。

## Key Words 关键词

## Urban Complex in CBD

### CBD 型城市综合体

# SHIN City Lifestyle Plaza 无锡新之城全生活广场

## Commercial Flow 商业动线

## Multivariate Space 多元空间

## One-stop Service 一站式服务

Location: Wuxi, Jiangsu, China

Client: Wuxi Jingfa Real Estate Co., Ltd.

Architectural Design: 9 Town Design Studio for Urban Architecture

Type: Commercial Building

Design Team: Yu Lei, Rong Zhaohui, Jiang Lei, Dai Fang, Xu Tian, Deng Hongfeng, Lu Ping, Li Hongxing, Wang Yongjie, Zhang Xiaoming

Land Area: 60,099 m<sup>2</sup>

Floor Area: 150,127 m<sup>2</sup>

Design: 2008

Completion: 2011

Photography: Yao Li

项目地点: 中国江苏省无锡市

客户: 无锡经发置业有限公司

建筑设计: 九城都市建筑设计有限公司

设计类别: 商业建筑

设计团队: 于雷 戎朝晖 姜磊 戴芳  
许天 邓宏峰 陆坪 李红星  
王永杰 张晓明

占地面积: 60,099 m<sup>2</sup>

建筑面积: 150,127 m<sup>2</sup>

设计时间: 2008年

竣工时间: 2011年

摄影师: 姚力

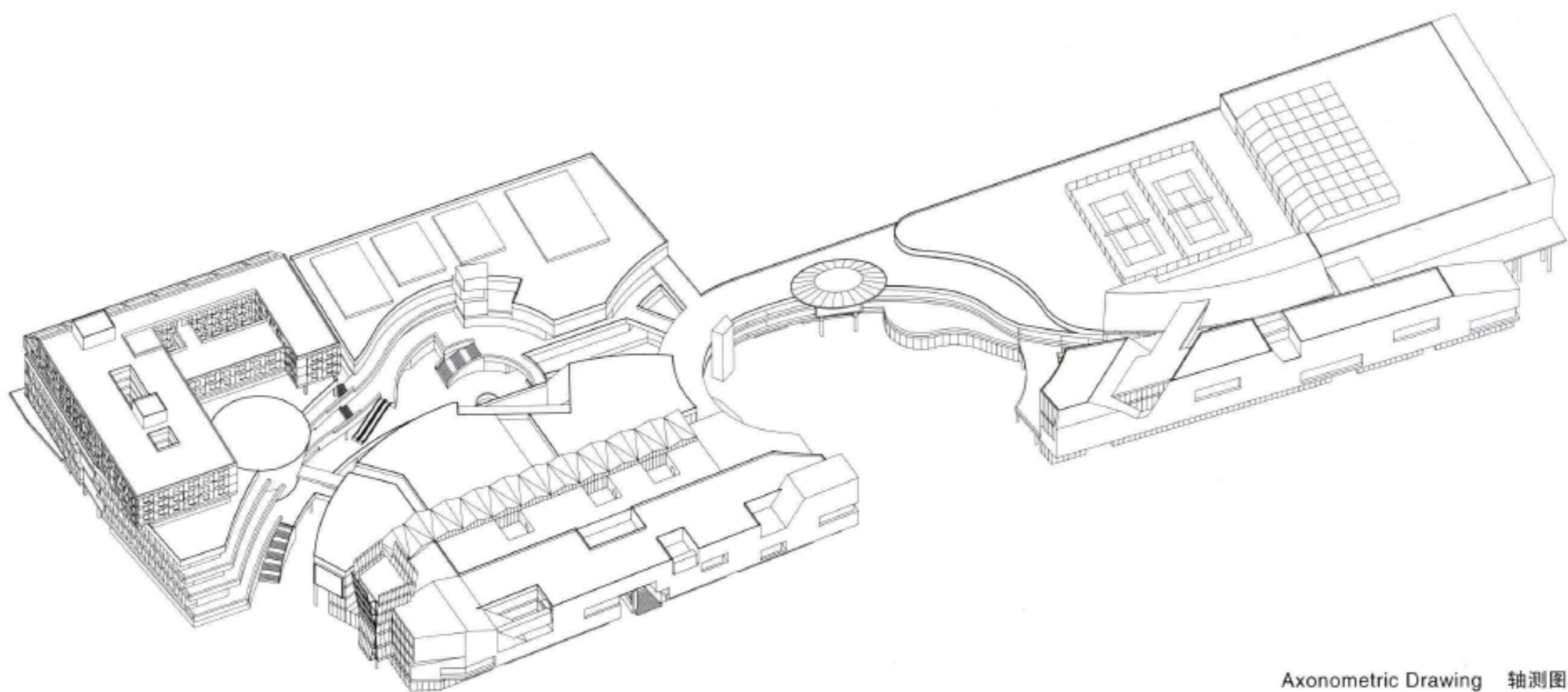
## » Overview

Located at Wuxi High-tech Zone, SHIN City Lifestyle Plaza is an urban complex comprised of living, entertainment, leisure and shopping, etc. which provides residents nearby with international shopping experience in accordance with reasonable planning.

## » 项目概况

无锡新之城全生活广场位于无锡高新区，是集生活、娱乐、休闲和购物为一体的城市综合体。项目以科学的业态组合、合理的布局规划，让无锡新区市民在家门口就能享受到国际级的购物休闲品质。

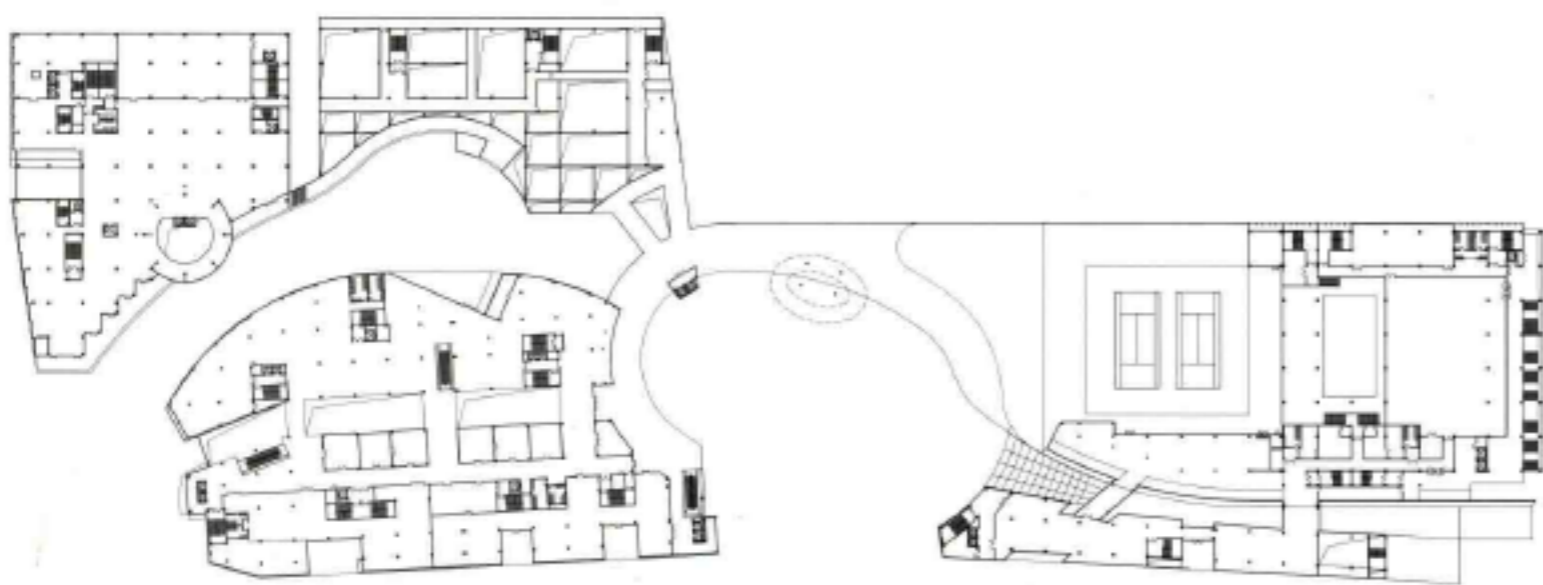




Axonometric Drawing 轴测图



Floor Plan 1 平面图 1



Floor Plan 2 平面图 2

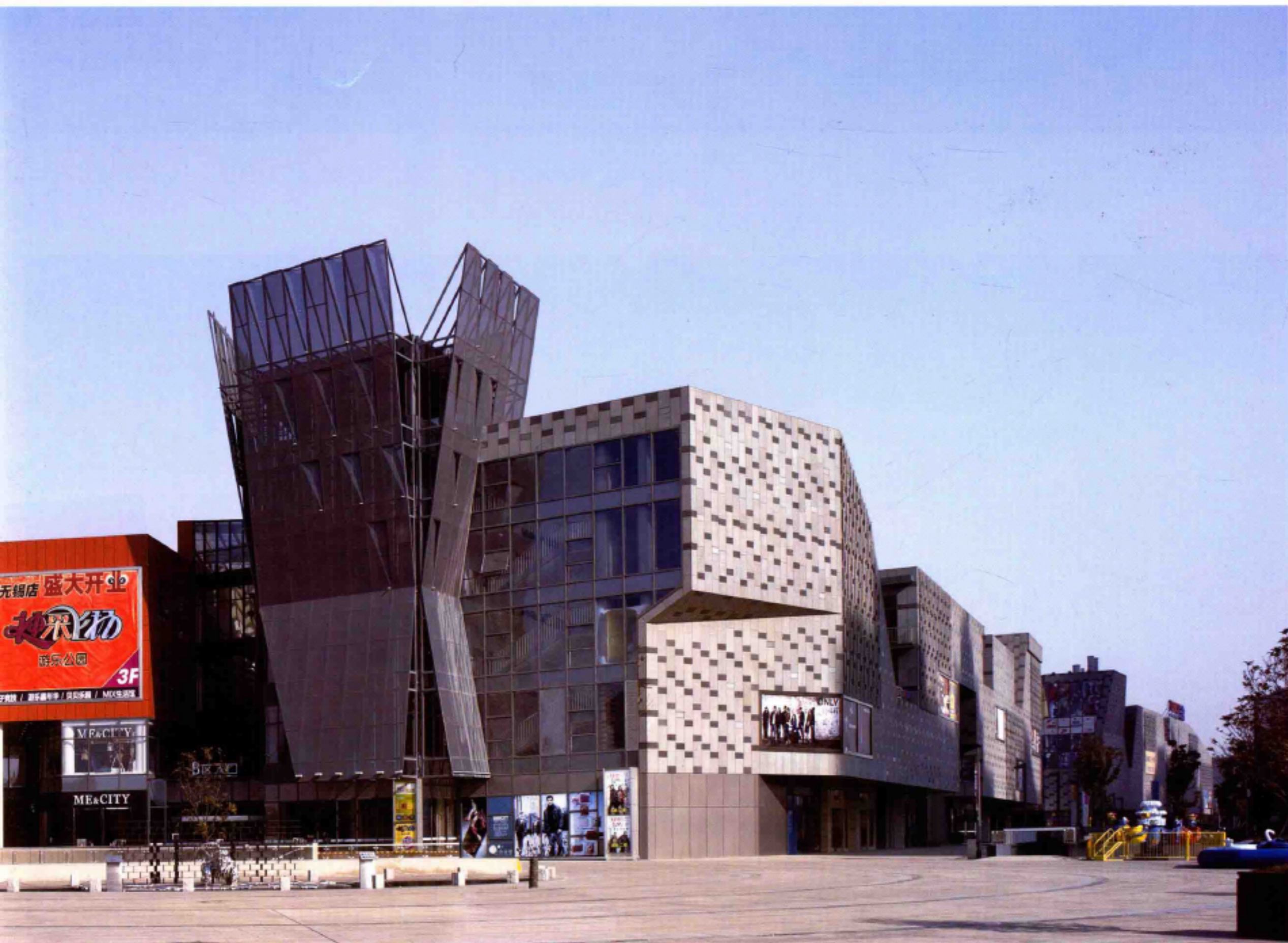
## » Architectural Design

Designers made the most of the width and depth of the site, and divided it into 3 proper blocks through commercial pedestrian street and central plaza, to form cohesive commercial atmosphere and create one-stop urban complex. Multi-layered urban public space was designed to combine with commercial flow, which not only attracts customers, but offers the citizens a wonderful place to visit, and form an organic whole of deeply interpenetrated commercial place and city life.

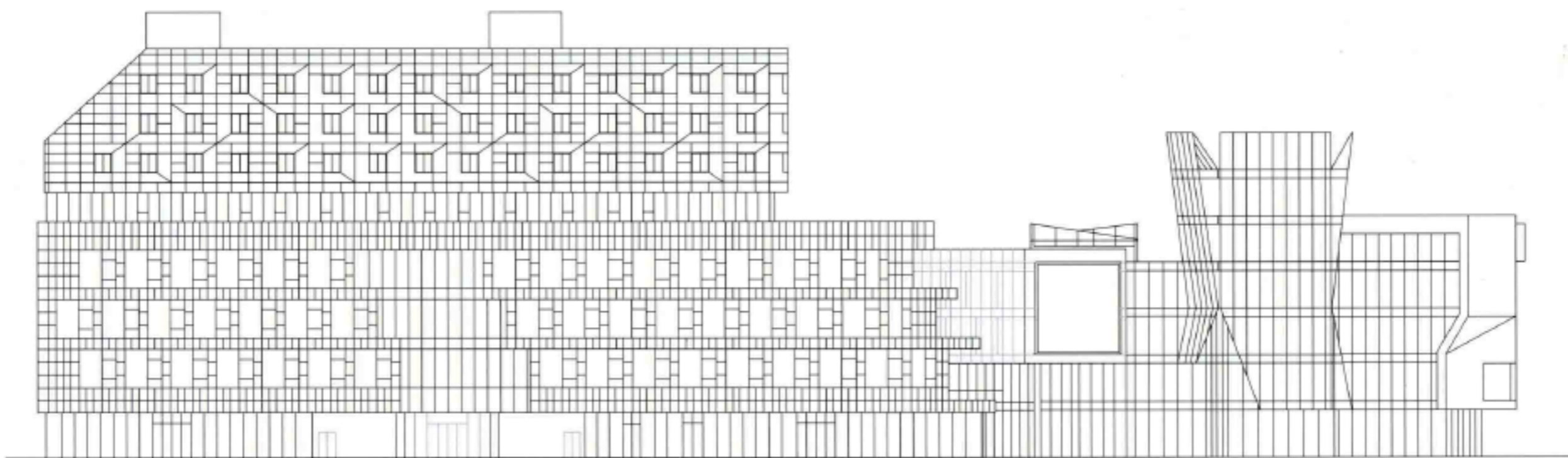
## » 建筑设计

设计师充分利用基地的面宽和进深，通过商业步行街、中心广场将地块分割成尺度合适的三个区块，形成内聚的商业氛围。结合商业动线设计多层次的城市公共空间，高效地引入商业人流、聚集人气，同时也为市民提供了丰富的活动场所，使商业空间和城市生活互相渗透，形成有机的整体。

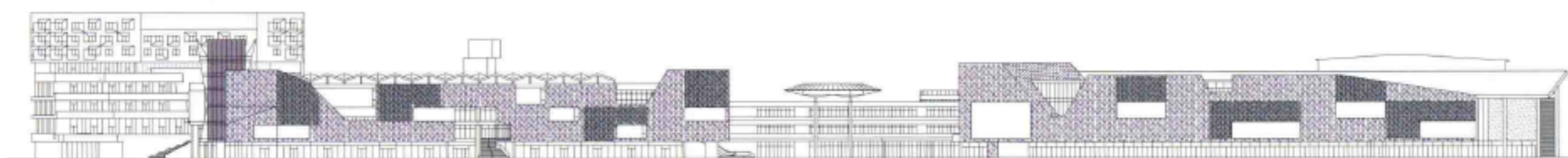








West Elevation  
西立面图



South Elevation  
南立面图



