

BEIJING XINGCHANG YISHU VILLA

北京兴创屹墅

用地面积	建筑面积	设计时间	建筑类型
152 439.2平方米	210 573.2平方米	2010年月至2010年12月	住宅

该项目是由北京兴创公司开发的高端居住社区。地块位于北京市大兴区双高路南侧，交通便利，周边环境幽雅，整个区域比较适合居住。整个地块分为三片区域，东南角为联排别墅区，东侧中间为配套高端会所，其他区域为多层和小高层。立面造型体块清晰，古典大气。建筑细部运用古典元素，彰显建筑的精致与高贵，强调手工感和厚重感，代表了当前法式豪宅的建筑风格。

Beijing Xingchuang Yishu Villa project is a high-end residential community developed by Beijing Xingchuang Investment Co., Ltd. The project site is located to south of Shuanggao Road in Daxing District of Beijing City, enjoying convenient traffic system and beautiful environment. It is a habitable residential project. The whole site is divided into three blocks, including townhouse villa block at southeast corner, supporting high-end chamber block at the middle of east part and multilayer and high-rise block at other areas. Building facades show clear and classical generosity and solemnity. Classical elements are used for detail design to show the delicacy and elegance of buildings. The senses of handicraft and stability represent the architectural style of French luxurious residential building.



above site plan/总平面图

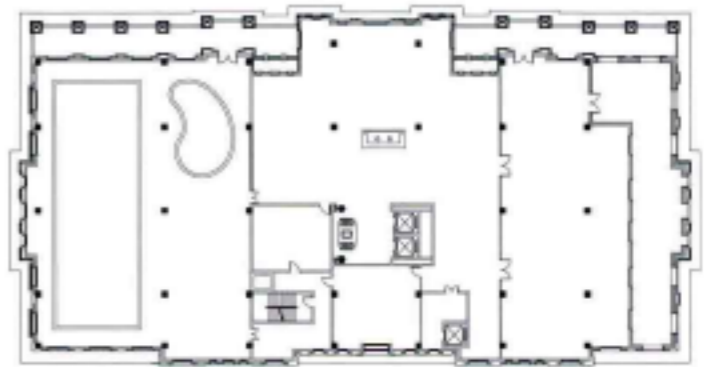
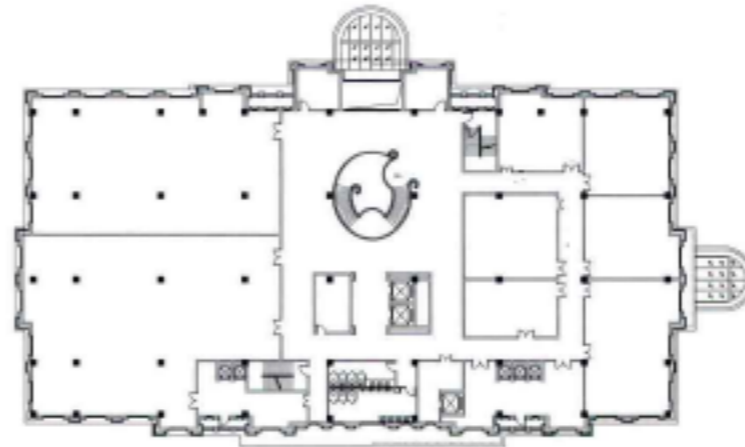
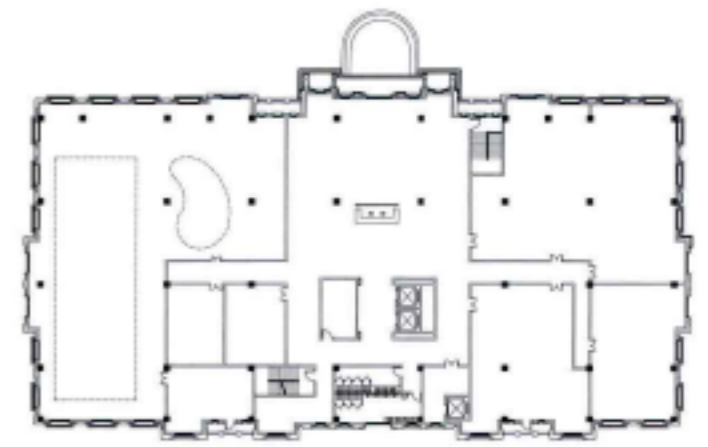
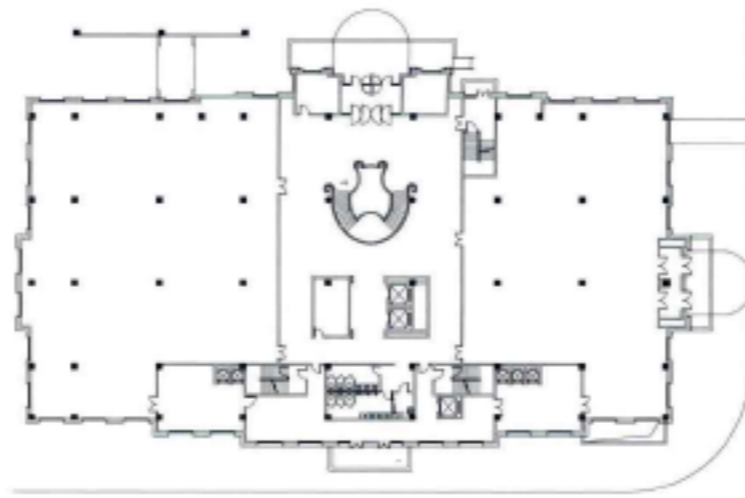
right district interior court perspective/小区内院透视图











left group interior perspective/组团内景透视图

above architectural level/建筑平面图

below architectural facade/建筑立面图

