

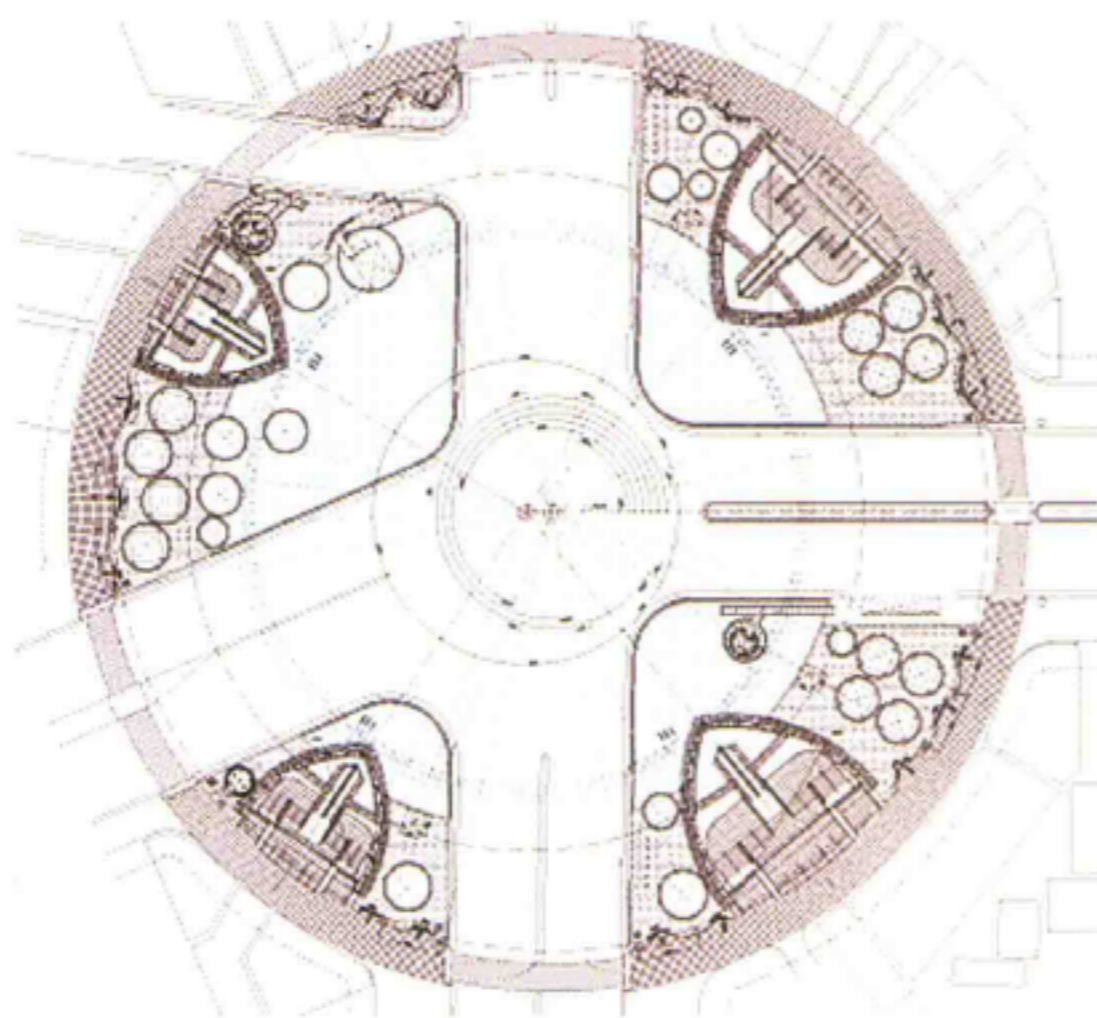
Panoramic view 全景图

## Kaohsiung Metro Station

Kaohsiung city decided a construction of the subway, and designated Shin Takamatsu to design a new subway station. The design range was the concourse (total floor area: 10,000 square metres) and the entrance. The station is located under an intersection in the central Kaohsiung city. Concretely, four main entrances on four corners and eight sub-entrances along the road are architecture on the ground. Therefore, through urban point of view, these designs influence the landscape of the city. As the result of researching the characteristics of the site with basic recognition, Shin Takamatsu found a historical fact that this intersection was the place where the Taiwan democracy movement began. The confusing design task because of the simplicity of functional request was rapidly solved by the symbolic information. An idea, which settles the four entrances located on four corners as an architectural synthesis and gives each entrance the form of joining hands while unifying them was generated in one sitting. At the presentation for the concept, these forms were named "Form of Prayer". Kaohsiung city gladly accepted it. An idea that the emitted laser beams from the top of the four entrances meet above the central intersection was proposed at the presentation.

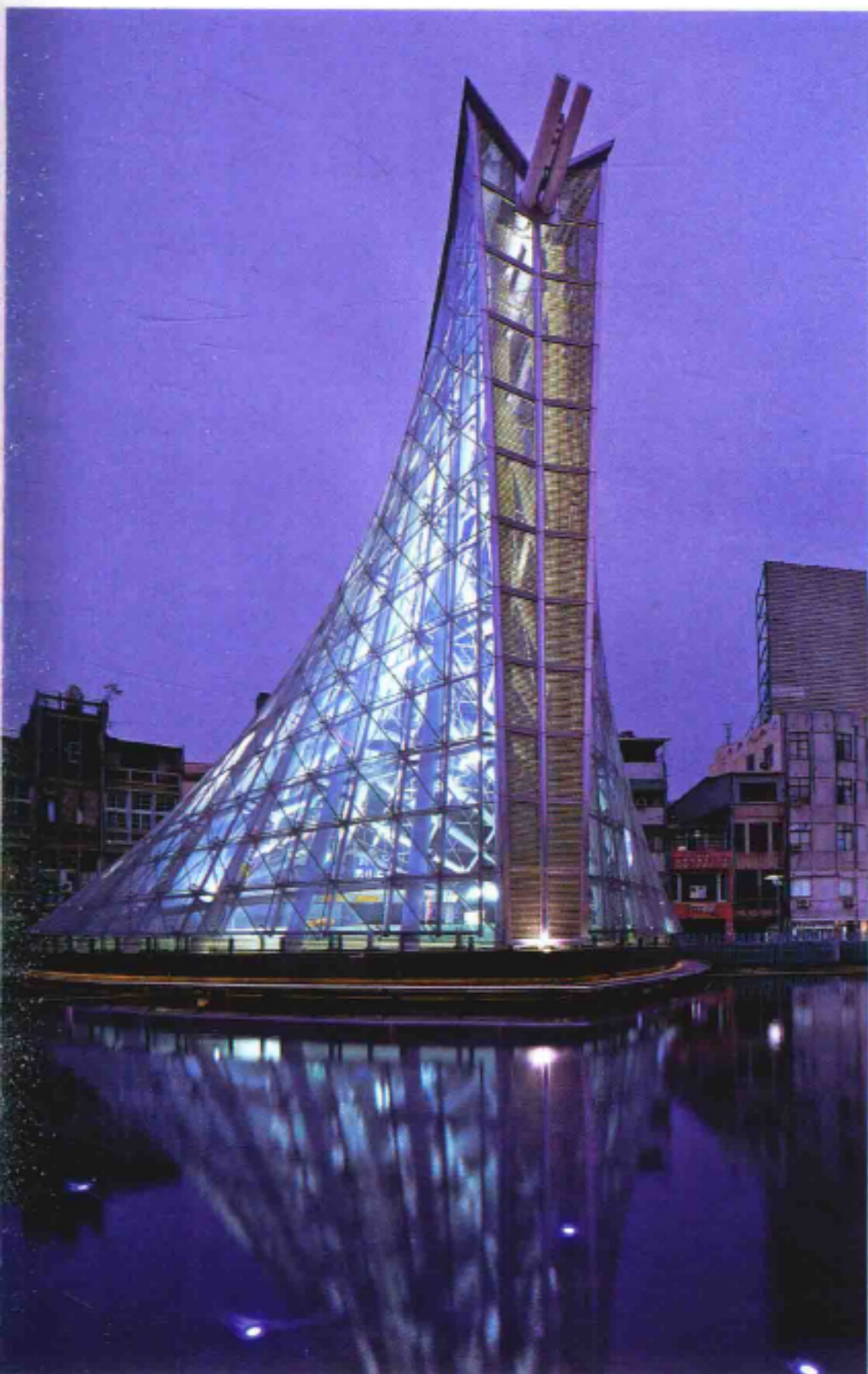
## 高雄地铁站

建筑师高松伸受邀为高雄市设计一个新地铁站，设计包括站前广场（10,000平方米）和地铁入口。地铁站位于高雄市中心的一个十字路口，四个主入口分别位于四角，其他八个副入口设在沿街建筑物地下。从城市规划的角度来看，这些设计影响着城市的景观。高松伸通过调研发现这个十字路口是台湾民主运动的发源地，这一发现促成了地铁站的设计。四角的四个入口被设计成合十的手掌形状，并被建筑师命名为“祈祷式”。高雄市政府对这一设计十分满意。四个入口的顶部还会发射出辐射光，并最终汇聚在十字路口的中央。

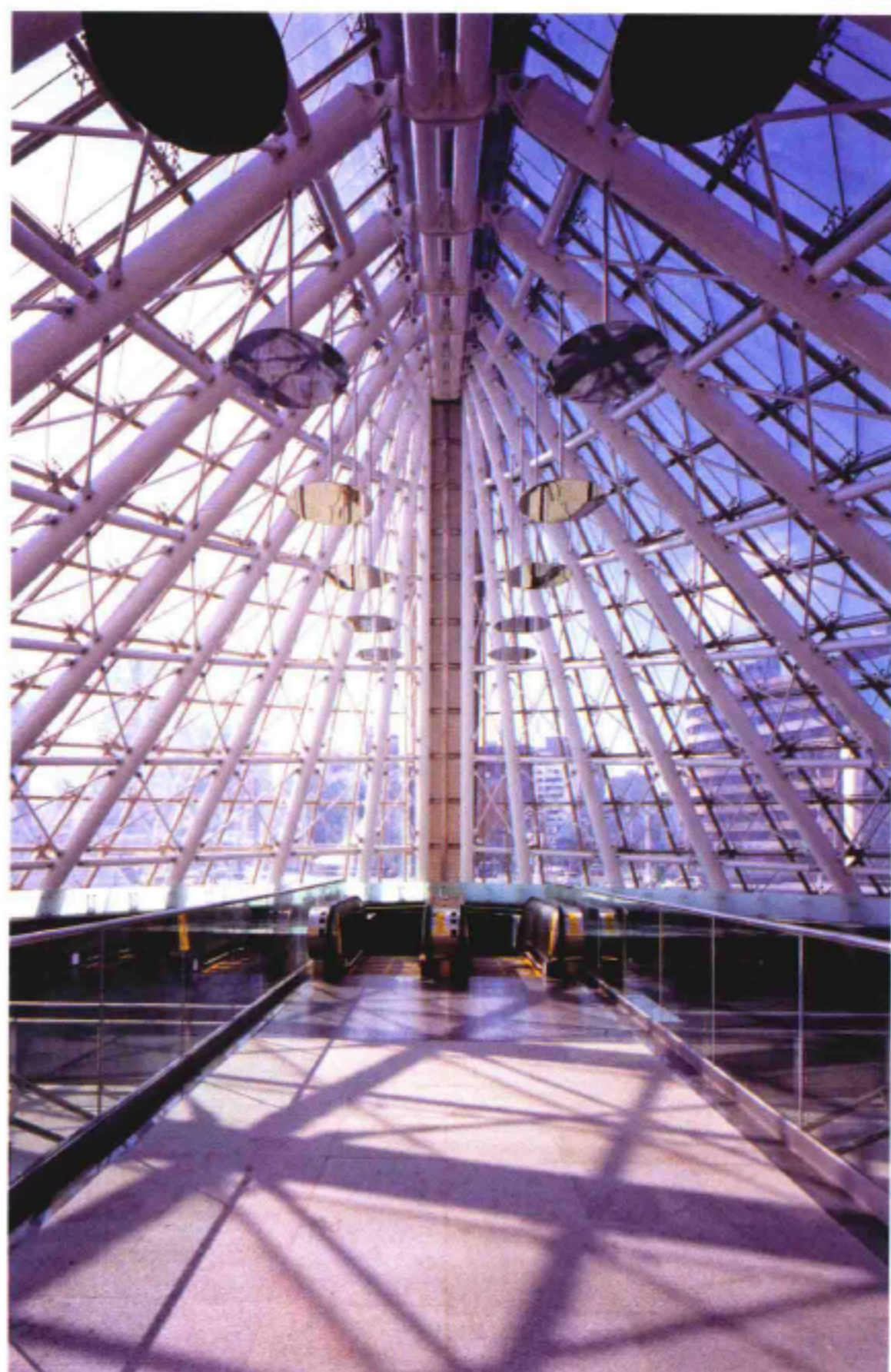




出口 Exit



地铁出口 Station exit



室内 Interior

Photo: no credit

Architect: Shin Takamatsu +Shin Takamatsu Architect and Associates Co.,Ltd.

Transportation

Completion Date: 2008