



General View 全景图

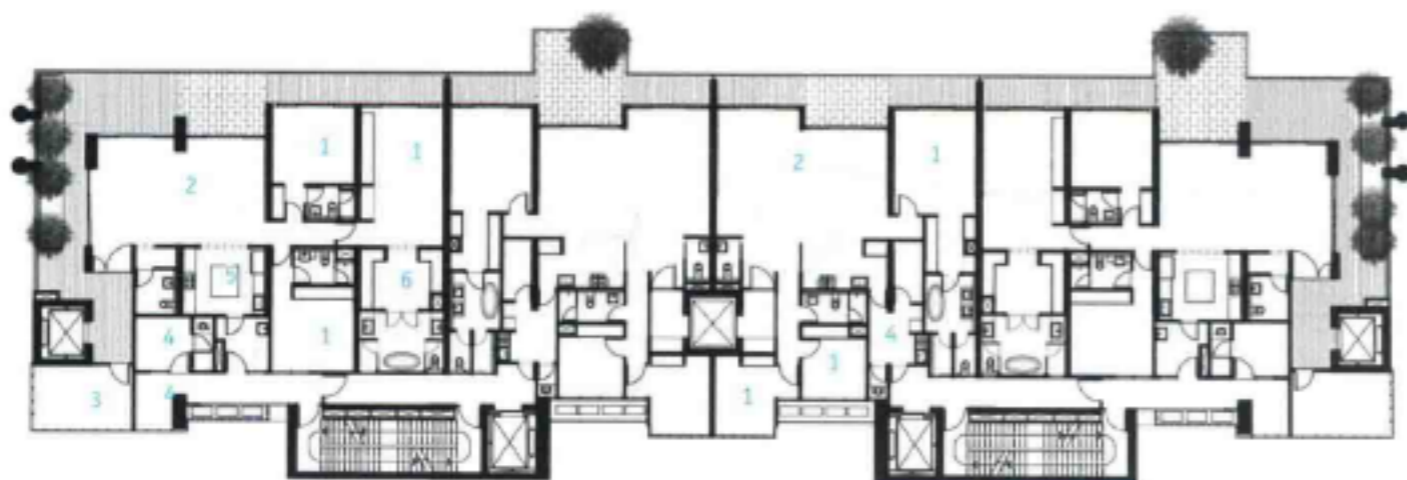
Avana Apartment

This sixteen-storey apartment project is located in Kemang area in South Jakarta, an established neighbourhood famous for its collection of mature trees and vast greeneries. The initial concept of an eight-storey apartment with balconies was abandoned for half a year in 2006 before the client decided to appoint Aboday Architects (Indonesia) to revive the project. As its first project in Indonesia, Aboday decided to retain only the project's internal modular unit plan, while changing the rest of external design, including rising it to sixteen storeys as a result of intense negotiation with local building regulator.

Living in an apartment unit way above ground is some kind of new experience for local people who used to the idea of staying in landed property, hence the introduction of extensive balcony surrounding each unit, mimicking a "yard" in "normal" house. Comprising sixty-four units ranging between 180 square metres to 460 square metres (for the penthouse), with each spacious private space and service area, this apartment is an epitome of landed house that stacked on top of each other creating a home in the sky. The idea of a fluid internal-external space is also explored in every space creation on this building. A six-metre-high lobby, which opens directly to its public pool and garden, starts this experience on the ground floor when people enter the building, leading to a glass-enclosed private lobby. This concept of internal-external space is further explored in each unit above. There is almost no visible boundary between internal unit, balcony (and even the sky...), as a result of extensive use of tempered clear glass panel for door, window and balcony's railing.

阿瓦纳公寓

这幢16层的公寓位于雅加达南部一个绿树成荫的街区，其主要建筑特色为凸出的阳台以及四周的私人游泳池。其中阳台环绕着公寓四周，间距约为3米，为欣赏雅加达的街景提供了完美的场所。游泳池规格为25X11米，四周采用透明玻璃围合，给住户带来舒适的游泳体验。小花园和池塘犹如在单独住宅和整体背景中建立了一条纽带，将两者融合在一起。设计师摒弃了雅加达地区公寓的典型样式，营造纹理清晰、质感十足的外观，突出温馨柔和的气息，与这一街区的绿树青草交相呼应。此外，住户们还可以在自家的阳台上栽种植物，打造空中花园。郁郁葱葱的植物与混凝土玻璃材质的建筑相互映衬，使得整幢公寓看似犹如巨大的绿色织锦，格外引人注目。



1. 卧室
2. 客厅和餐厅
3. 书房
4. 服务区
5. 厨房
6. 主卧

1. bedroom
2. living & dining room
3. study room
4. service area
5. kitchen
6. master bathroom



建筑细节 Details



外立面 Façade



内部空间 Interior

Photo: Happy Lim Photography

Residential

Completion Date: 2009

Architect: ABODAY (www.aboday.com)