



Site plan
總平面圖

Engineer: Ramboll, Sweden
 Client: Halmstad Municipality
 Photographer: Adam Mork
 Award: 1st prize
 Construction Period: 2004-2006
 Location: Halmstad, Sweden
 Area: 8 000 m²
 Construction sum: EUR 12 m excl. VAT

工程師: 瑞典胡姆伯羅
 業主: 哈姆斯泰德市政府
 攝影: 亞當·摩克
 所獲獎項: 一等獎
 建造日期: 2004年—2006年
 基地位置: 瑞典哈姆斯泰德市 (Halmstad)
 面積: 8 000平方米
 建設金額: 除去增值稅12億歐元

Halmstad Library

哈姆斯泰德圖書館

Architect: Schmidt hammer lassen

設計師: Schmidt hammer lassen

Halmstad Library is set in a parkland space on the River Nissan, overlooking Halmstad's historical core. With a circular atrium set around a large existing chestnut tree—its fulcrum—and the long concave facade with double-height glazing distended between two white horizontal 'floating' plates. Nature, the seasons and the city all become part of the library. Inside, the library is essentially a single open space, flexible and highly legible: An open structure which allows an active interplay between the columns and the trunks of the trees outside. The atrium is the focal point that creates instant overview and connects the library's three floors vertically. Surrounding the atrium is the information plaza: an active zone containing reception, computer terminals, exhibitions, a café and a stairway to the balcony floor, and to the stacks in the basement. Around this zone—looking out in the direction of the facade and the view—the various sections unfurl, breathing their own tranquil atmosphere, affording users the space to ponder or be drawn in. The library is constructed of few and simple materials: concrete, glass and Nordic larch flooring.

哈姆斯泰德 (Halmstad) 圖書館位於尼森河畔，俯瞰着全市的歷史核心之地。圖書館中心圍繞着一棵栗樹建造。兩只白色、橫向的“浮盤”之間是玻璃長形凹面。自然、季節以及這個城市都成了圖書館的一個部分。圖書館內部是獨立的開放空間。線條既靈活多變又高度清晰。在廊柱與樹干之間形成了積極的、相互影響的開放結構。建築的重心是要營造一種觀感上的連續性。並將圖書館的三層空間完美連接。圍繞着建築中心建有信息廣場，包括信息接收、計算機終端、展覽廳、咖啡館、通往露臺及地下室的臺階。朝外望去，圍繞着信息廣場的是伸展的區間。讀者可以在這種安靜的氣氛之中沉思、冥想。圖書館的建築材料可以說十分簡單：混凝土、玻璃以及北歐松木地板。







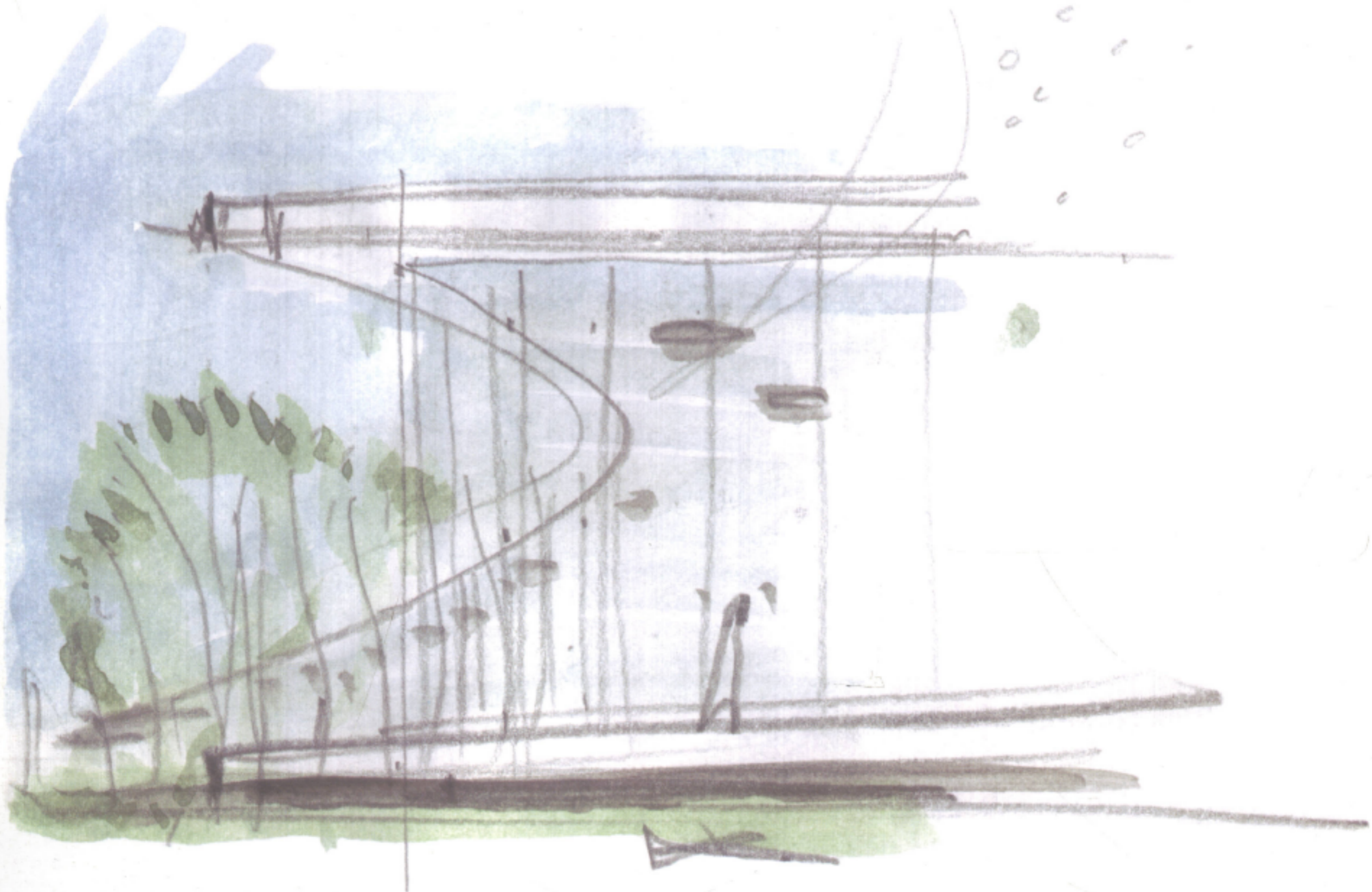


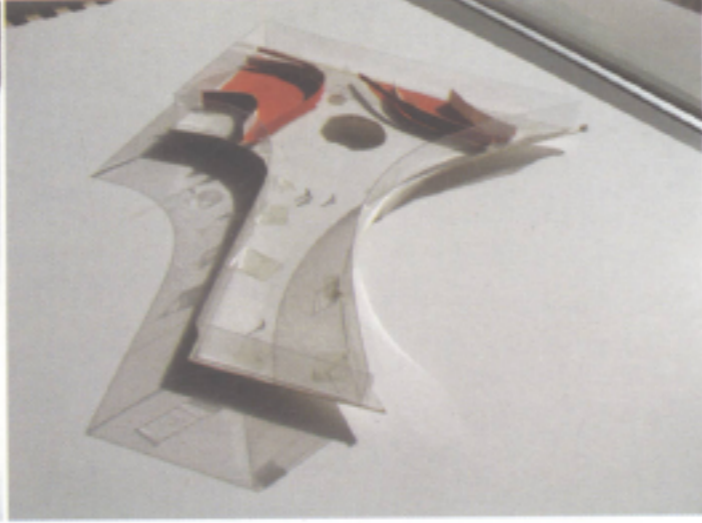
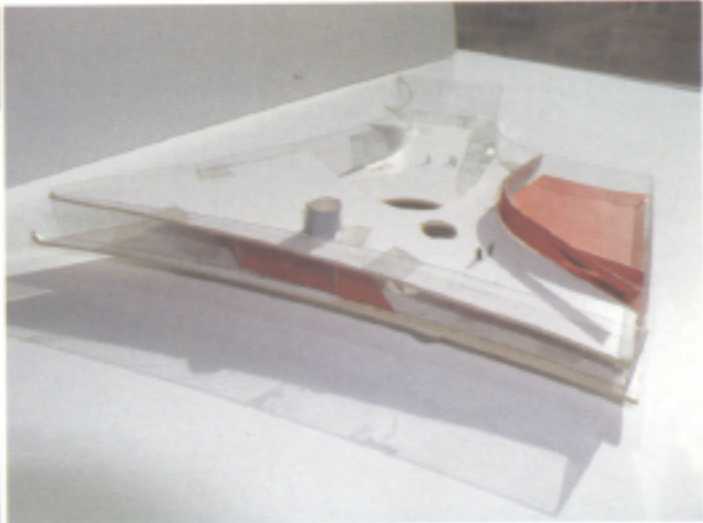


STADSBIBLIOTEKET











- 1. Lecture Room
- 2. Foyer
- 3. Atrium
- 4. Closed stacks
- 5. Open stacks
- 6. Technical Support Room

Basement plan
地下室平面图



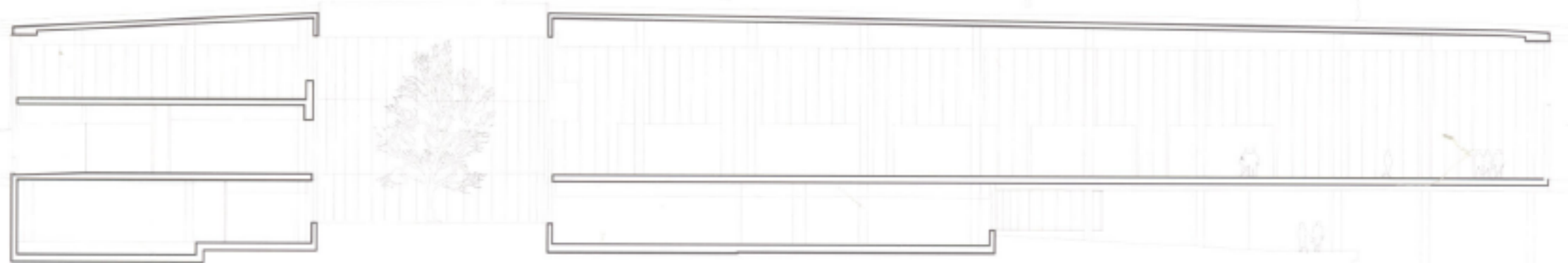
- 1. Porch
- 2. Newspaper Reading Room
- 3. Café
- 4. Children's Section
- 5. Atrium
- 6. Children's and Teenage Sections
- 7. Public area 1
- 8. Gallery
- 9. Reception
- 10. Processing area, office and IT
- 11. Garage/storage facility

Ground floor plan
一層平面图



- 1. Non
- 2. Music Section
- 3. Atrium
- 4. Lunch facility
- 5. Staff facilities
- 6. Local History
- Genealogy
- Local Materials

1st floor plan
二層平面图



A-A Section 1 : 1000
A-A 剖面图 比例1 : 1000

