

POLY YE ZHILIN

保利叶之林

用地面积	建筑面积	设计时间	建筑类型
98 805.1平方米	266 687.95平方米	2011年2月至今	住宅

本案位于上海市宝山区，是保利集团上海公司2011年重点打造的高品质楼盘。地块拥有优越的公园景观和河道景观。规划结构遵循“使小区的每一户人家都享有丰富的景观资源”的原则，通过内部东西向的主景观绿轴将三块地紧密相连，形成独有的网格化景观体系。建筑与景观和谐相融，成为闹市中难得的净土。

在产品设计中，对经典“90”户型进一步优化，增加了厨房和卫生间的实用性，为住户的生活提供既紧凑又舒适的空间。在造型设计中，将西式建筑的比例关系与东方建筑的细部元素相结合，创造出简洁大气，且渗透着东方韵味的新颖的住宅建筑风格。

This project is located in Baoshan District of Shanghai City and it is a high-quality real estate project created by Poly Shanghai Real Estate Development Co., Ltd. In 2011. The project site enjoys advantageous park landscape and watercourse landscape. The planning structure follows the principle of "providing abundant landscape resources for every room in the community". Three blocks are closely connected together through an internal main landscape green axis spreading out to east and west. Harmonious coexistence is realized between buildings and landscape, producing a rare pure land in busy downtown area.

During product design, the designers further optimize the classic "90" room layout and add the practicability of kitchen and washing room, creating compact and comfortable spaces for users' daily life. On the aspect of appearance design, the designers combine the proportional relation of western building with detail elements of oriental building together to realize a simple, generous and novel residential building style, showing oriental beauty.



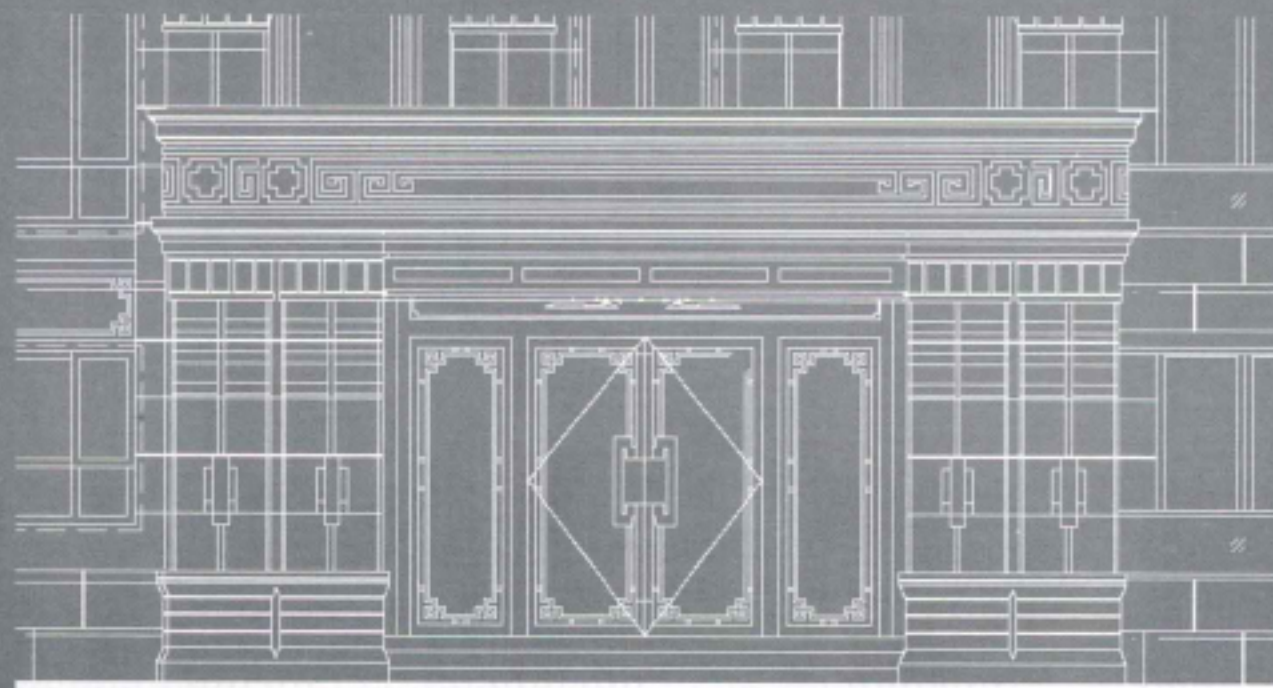
above site plan/总平面图
right residential perspective/住宅透视图



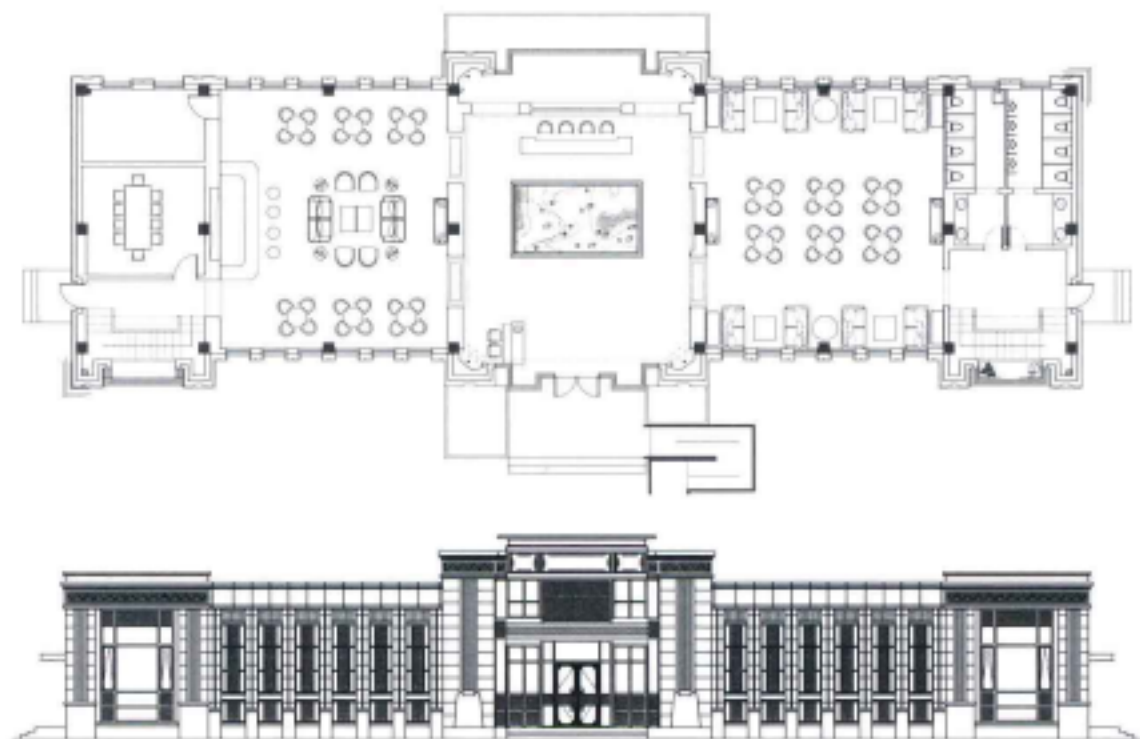




left residential perspective/住宅透视图
right architectural detail/建筑细部







left club perspective/会所透视图
above club plan and facade/会所平面和立面图
below club perspective/会所透视图

