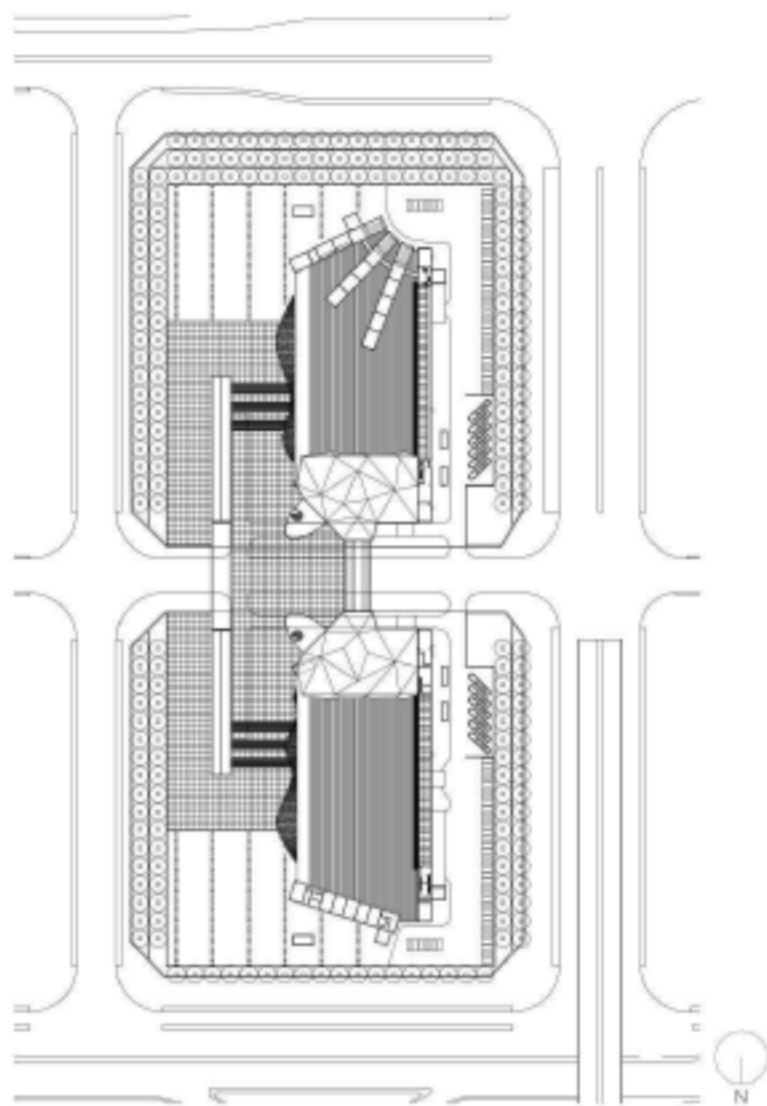


文化 / 体育建筑
CULTURE / SPORTS BUILDING

深圳文化中心 Shenzhen Cultural Center

建成时间 Completion Year : 2007
建设面积 Building Area : 89 744.8m²
合作公司 Partner : Arata Isozaki & associates



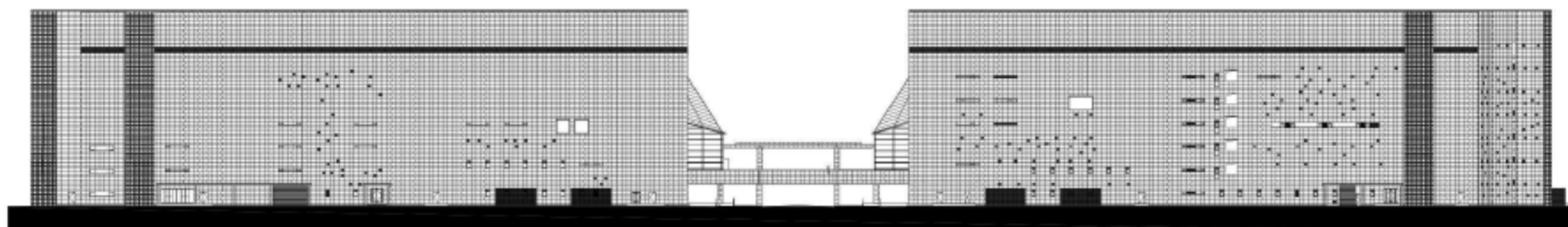
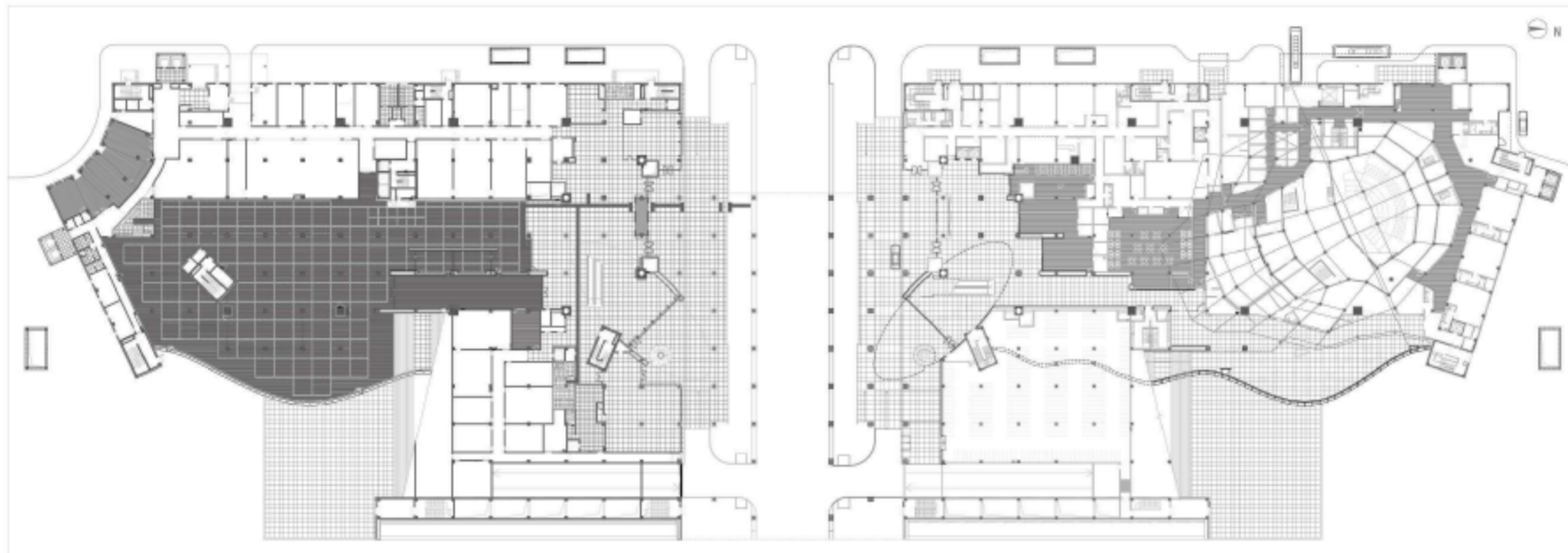
深圳文化中心由中心图书馆和深圳音乐厅两部分组成，两栋建筑之间是将二者连成一体的公共文化广场，形成一个面向市政厅—中央绿化带—莲花山的开放空间。音乐厅和图书馆入口处的两个钢结构玻璃体分别被称为“金树”和“银树”，寓意“文化森林”。中心图书馆的设计藏书量为500万册。阅览室为无墙开放空间，共6层。各层实现自然采光和通风，并铺设地面线槽以适应书架、桌椅等的变化更新。报告厅分为两层，设置了升降台、投影机、同

声翻译等设备。报告厅和休息厅之间通过敞开前室门可形成一个用于聚会等的多用途空间。

深圳音乐厅主要由演奏大厅和多功能小厅组成，大厅由不规则折叠墙面围成，小厅设在入口大厅上方，是以轻音乐为主的多功能音乐厅。入口大厅周围设有向市民开放的咖啡厅、音乐书店等设施。演奏大厅采用峡谷梯田式，厅内采用了座椅送风系统，管风琴的设计采用外露手法。多功能小厅设计成多层平台和升降舞台，既可作为舞台又可作为观众席来使用。







The Shenzhen Cultural Center consists of two parts, the Central Library and the Shenzhen Concert Hall. The two buildings are connected by a public cultural square, which forms an open space facing the city hall, the central green belt and Lotus Mountain. The two steel-structured glass volumes at the entrance to the concert hall and library are called "Golden Tree" and "Silver Tree" respectively, representing the idea of "cultural forests". The central library has a collection of 5 million books and a 6-story open reading space with-

out walls. Each floor is naturally lighted and ventilated, laid with ground troughs to accommodate the redeployment of bookshelves, tables and chairs. The lecture hall is divided into two floors, equipped with lifting platforms, projectors and rooms for simultaneous interpretation. The front lobby between the lecture hall and the lounge can be opened up for parties and other purposes.

The Shenzhen Concert Hall is mainly composed of a performance hall and a smaller multi-functional space. The perfor-

mance hall is enclosed by irregular folding walls, the smaller space perched above the entrance hall, functioning as a multi-purpose concert hall for light music. Surrounding the entrance hall are cafes and music and bookstores that are open to the public. The performance hall is designed like a terraced field, with a ventilation system installed below the seats; the pipe organ is completely exposed. The multi-functional space is designed with a multi-level platform and a lifting stage, which can be used as a stage or as an auditorium.

