

Features 项目亮点

The mixed-use complex consists of five towers (offices, apartments, retail, a hotel, cafes, and restaurants) with poetic ponds on the plaza.

本案为一个城市综合体项目，由5座塔楼组成，涵盖办公、公寓、零售空间、旅馆、咖啡店和餐馆等多种业态；塔楼围合出大型公共空间，中间设置池塘，呈现出诗意的氛围。

Key Words 关键词

High Tech 高科技

Synthesis 综合性

Low Energy Consumption 低能耗

Urban Complex in CBD CBD 型城市综合体

Location: Chengdu, Sichuan, China
Architect: Steven Holl Architects
Associate Architects: China Academy of Building Research
Floor Area: 310,000 m²
Site Area: 17,500 m²

项目地点: 中国四川省成都市
建筑设计: Steven Holl 建筑设计事务所
合作设计: 中国建筑研究科学院
建筑面积: 310,000 m²
占地面积: 17,500 m²

» Overview

The Sliced Porosity Block — the Raffles City development designed by Steven Holl Architects in Chengdu — celebrates its topping out at 123 m. Located just south of the intersection of the First Ring Road and Renmin Nan Road, the mixed-use complex consists of five towers with offices, apartments, retail, a hotel, cafes, and restaurants.

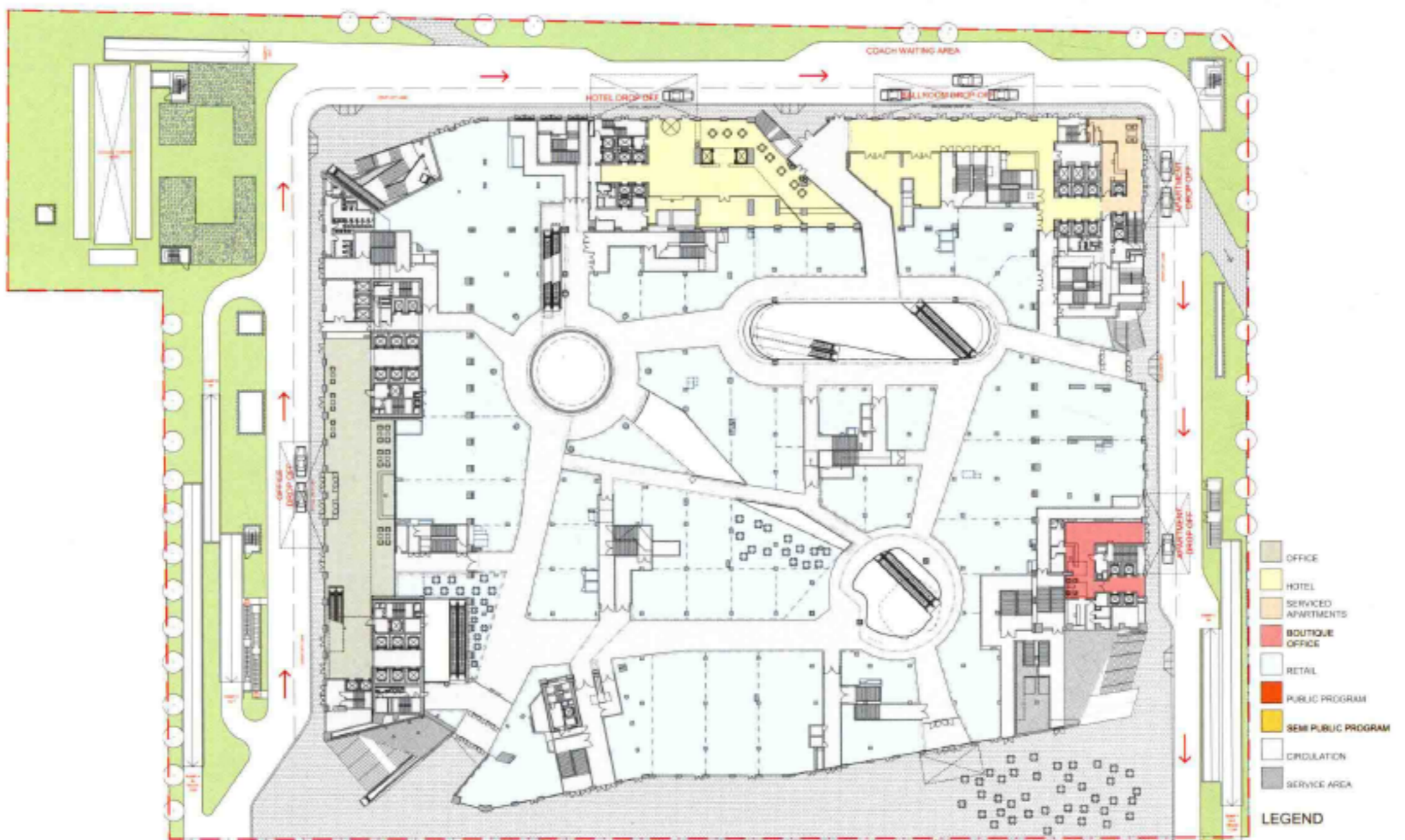
» 项目概况

凯德置地（中国）投资建造的来福士广场，位于成都市一环路和人民南路交叉路口南侧，为混合用途的建筑群，形如都市中的巨型块。这个高度为123 m的综合项目，包括5座塔楼，涵盖办公室、公寓、零售空间、旅馆、咖啡店和餐馆。

» Architectural Design

The project's sun sliced geometry results from careful study of daylight exposures to the surrounding urban fabric. The three generous ponds on the plaza are inspired by a poem by Chengdu poet Du Fu (713 - 770).

Steven Holl states: "With great enthusiasm we celebrate the topping out of our Sliced Porosity Block, which will be a wonderful contribution to the metropolis of Chengdu. The new public space framed by these skyscrapers is environmentally state of the art, with a poetic form shaped by sunlight."



Level 01 Floor Plan 一层平面图



Location Plan 位置图

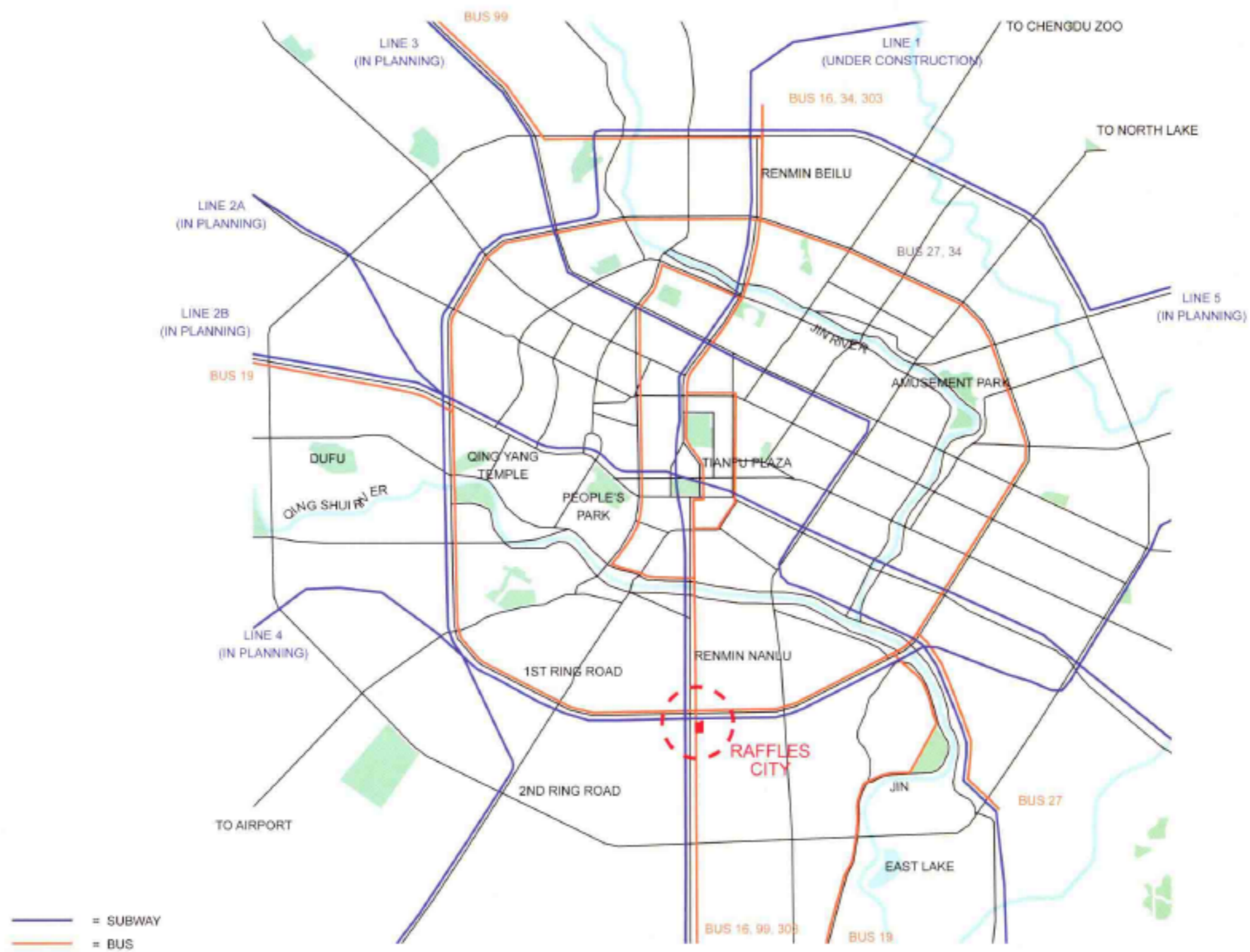
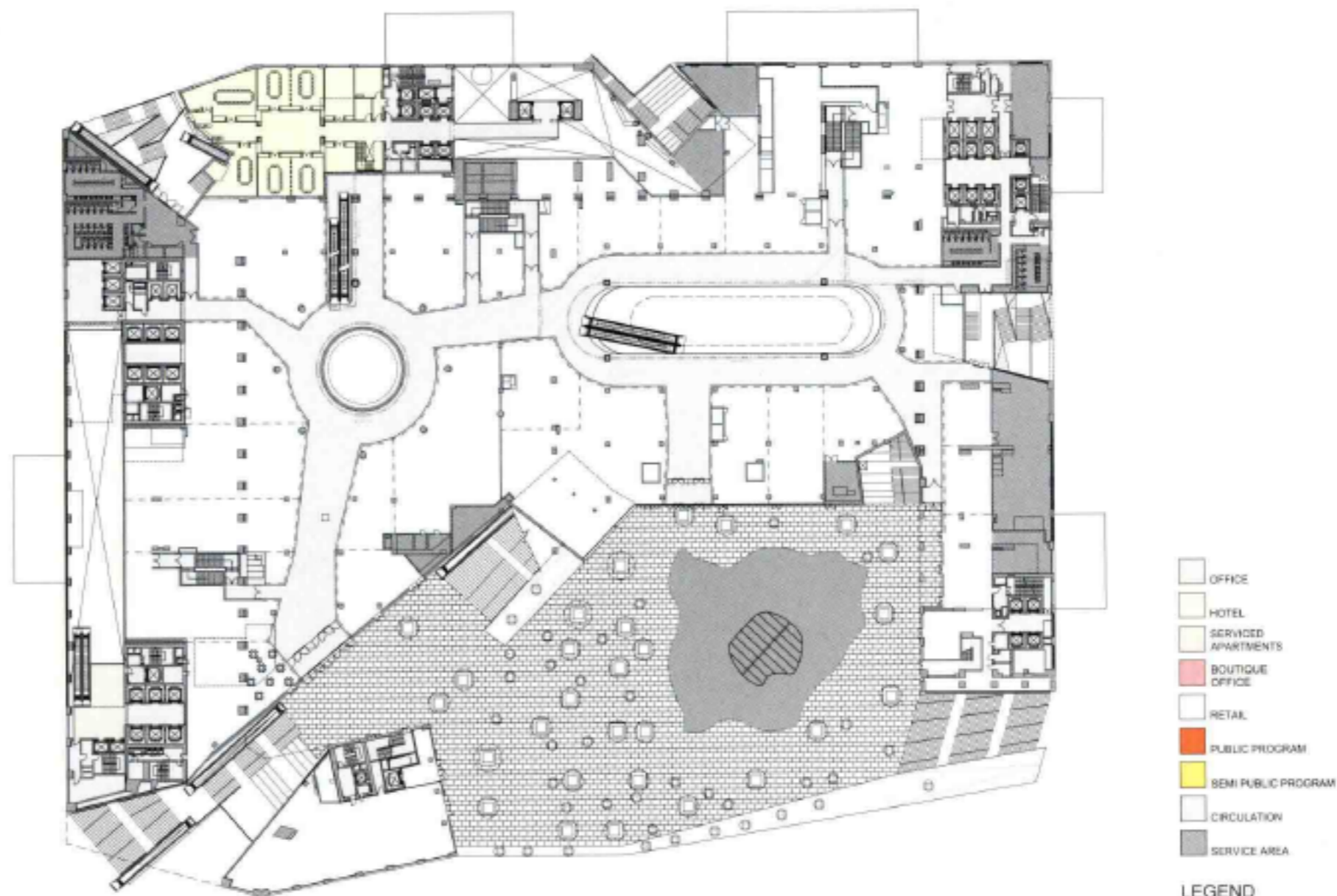


Diagram 图解

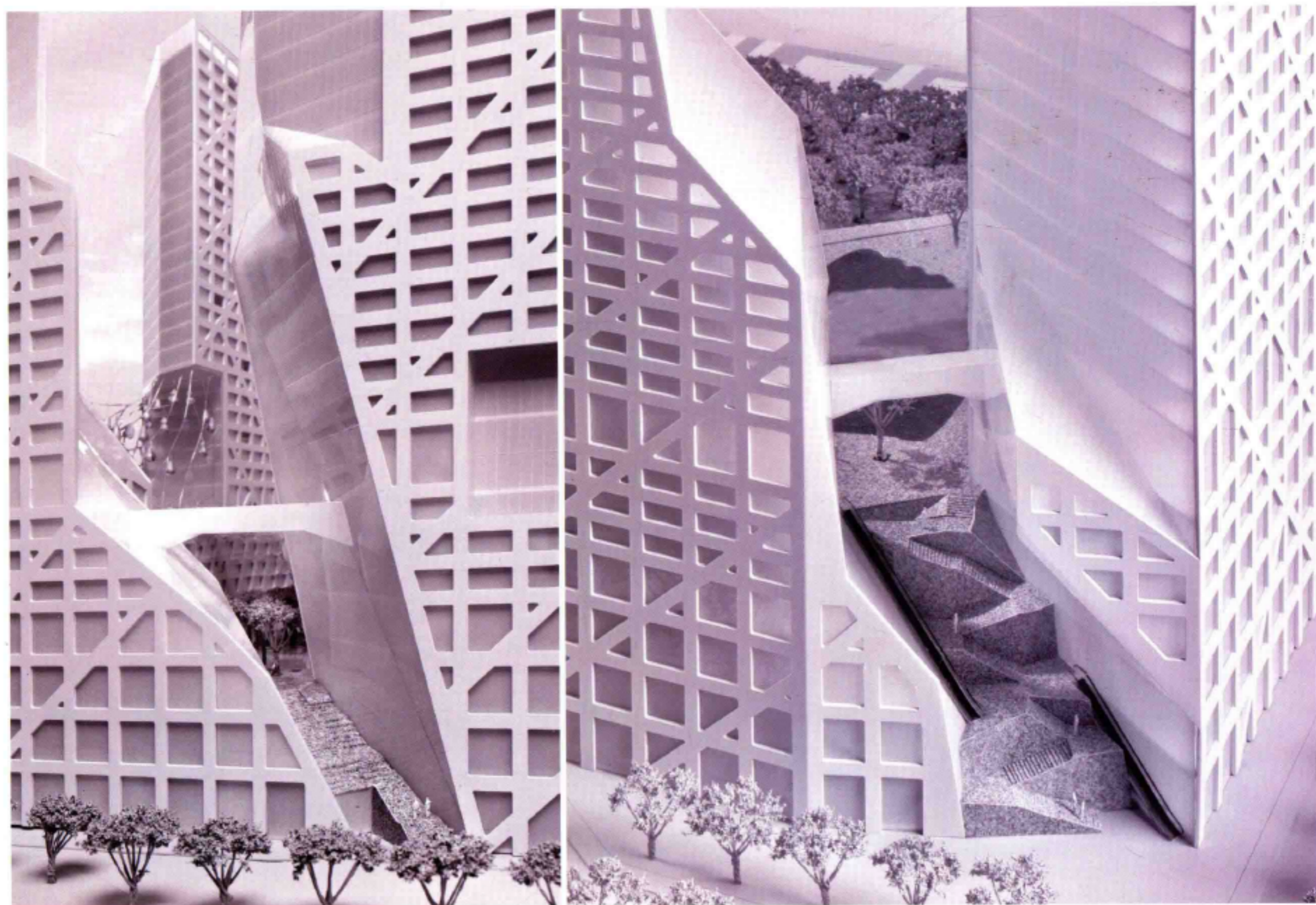
» 建筑设计

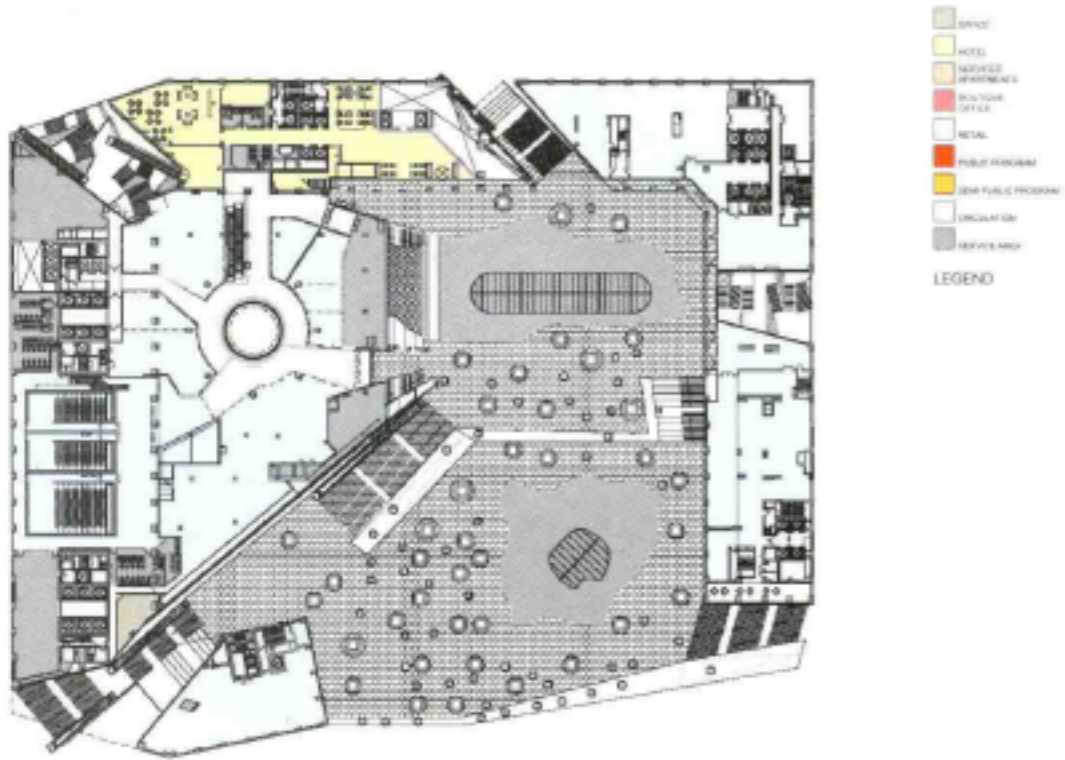
成都来福士广场独特的造型源自于精确的日照分析计算，5座塔楼看起来像是被阳光切割过的几何体，这是因为建筑规范要求建筑物必须达到最低日照率，而“切割”之后的大楼可以让阳光一览无余地照进建筑物。在5座塔楼包围之中的是一个由石阶、斜面、树、水池组成的多层广场，它适用于不同场合。广场中有3个池塘，其灵感来自唐代诗人杜甫的一首诗。这些池塘可以收集雨水，降低周围环境的温度。

设计者斯蒂文·霍尔说：“由这些摩天楼构成的新的公共空间，在阳光的照耀下，呈现出一种富有诗意的环境。”“在成都的轮廓线上，将出现一个新的地标，并且为人们提供了聚会和游玩的地方。”

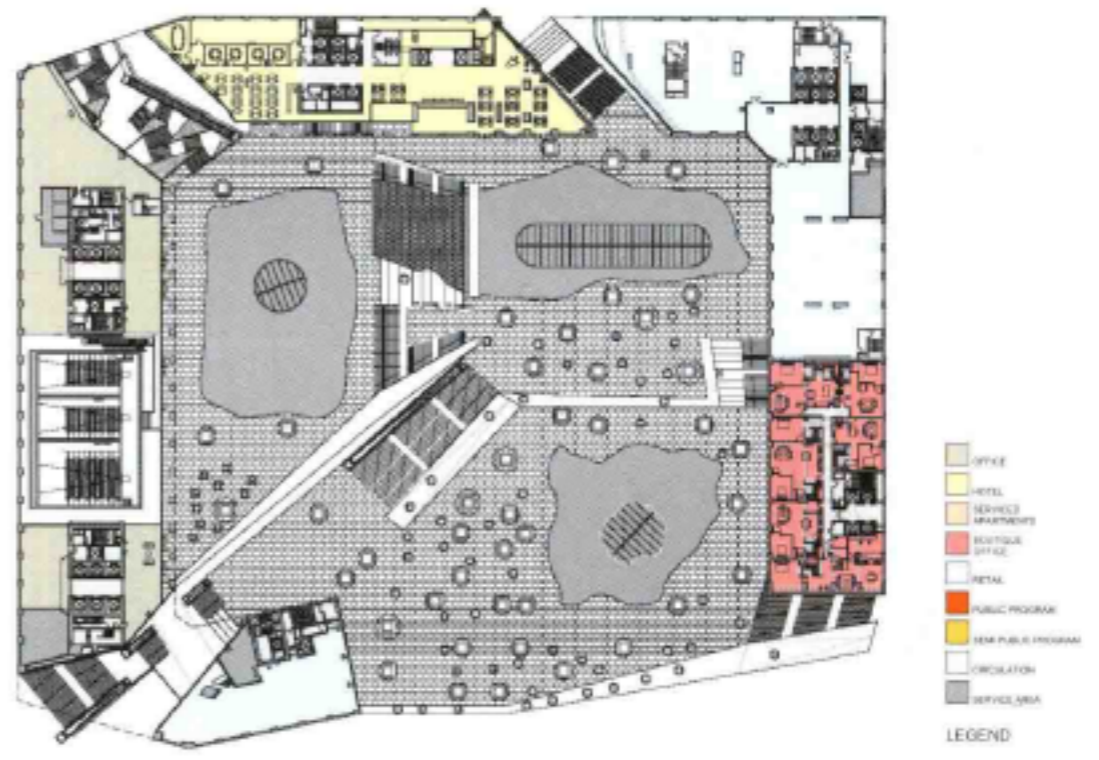


Level 02 Floor Plan 二层平面图

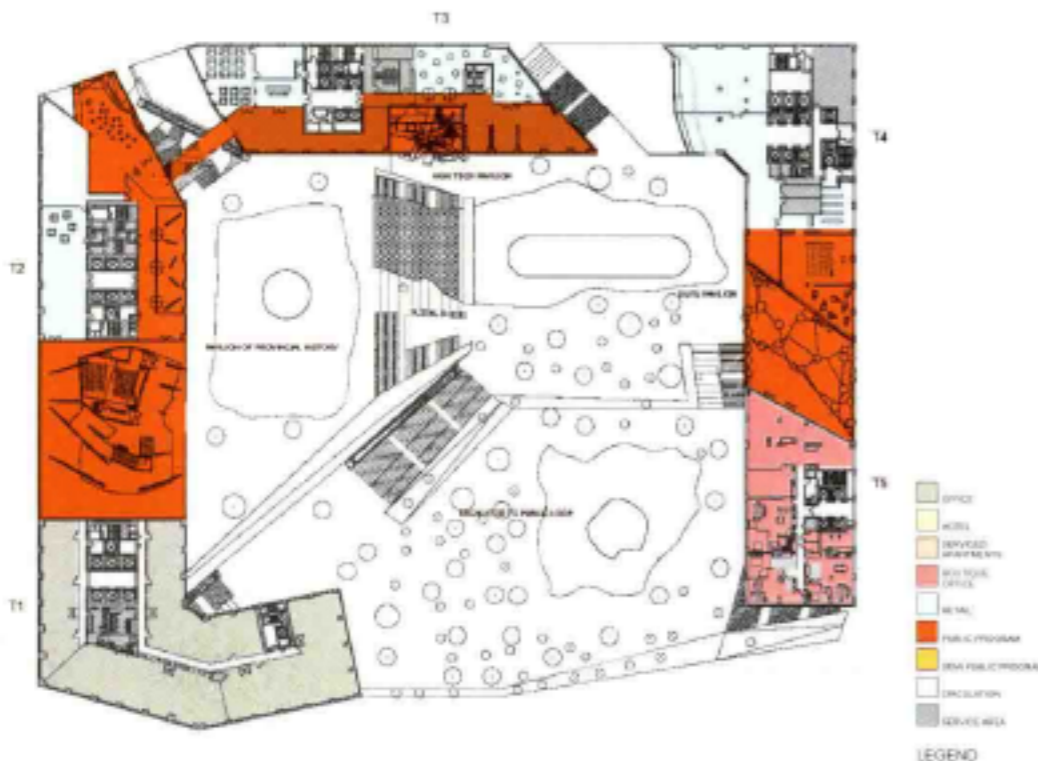




Level 03 Floor Plan 三层平面图



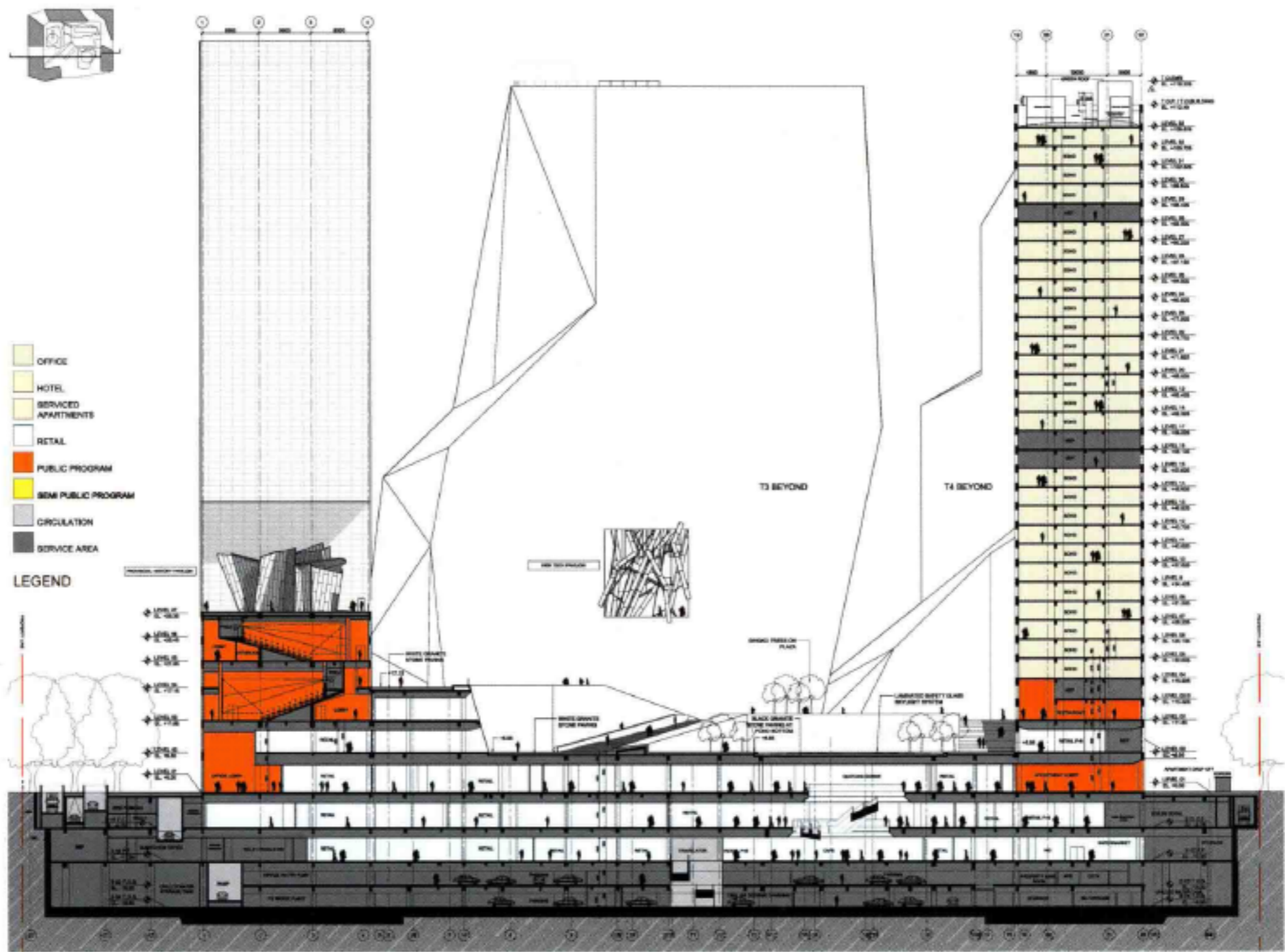
Level 04 Floor Plan 四层平面图



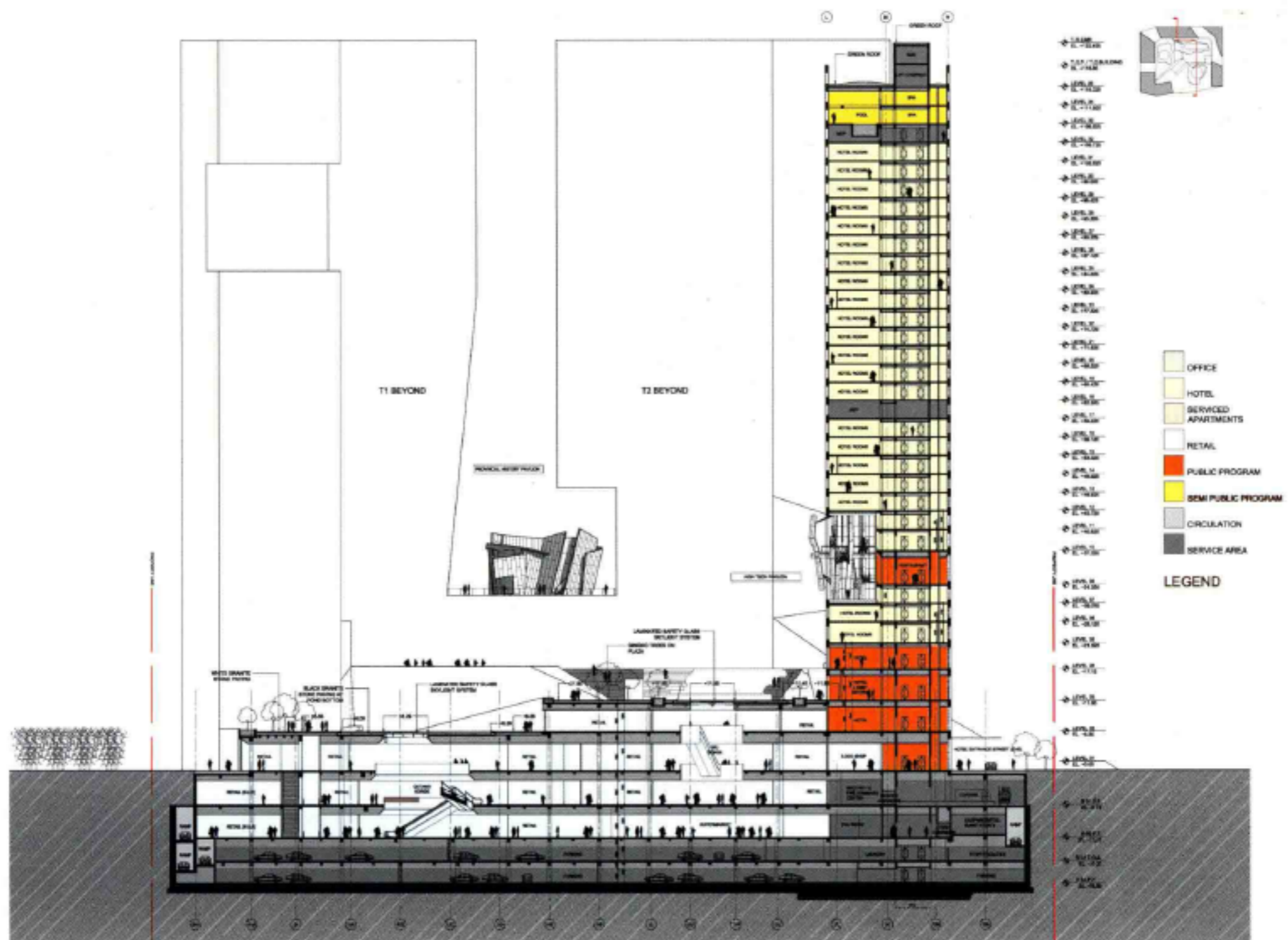
Level 07-08 Floor Plan 七~八层平面图



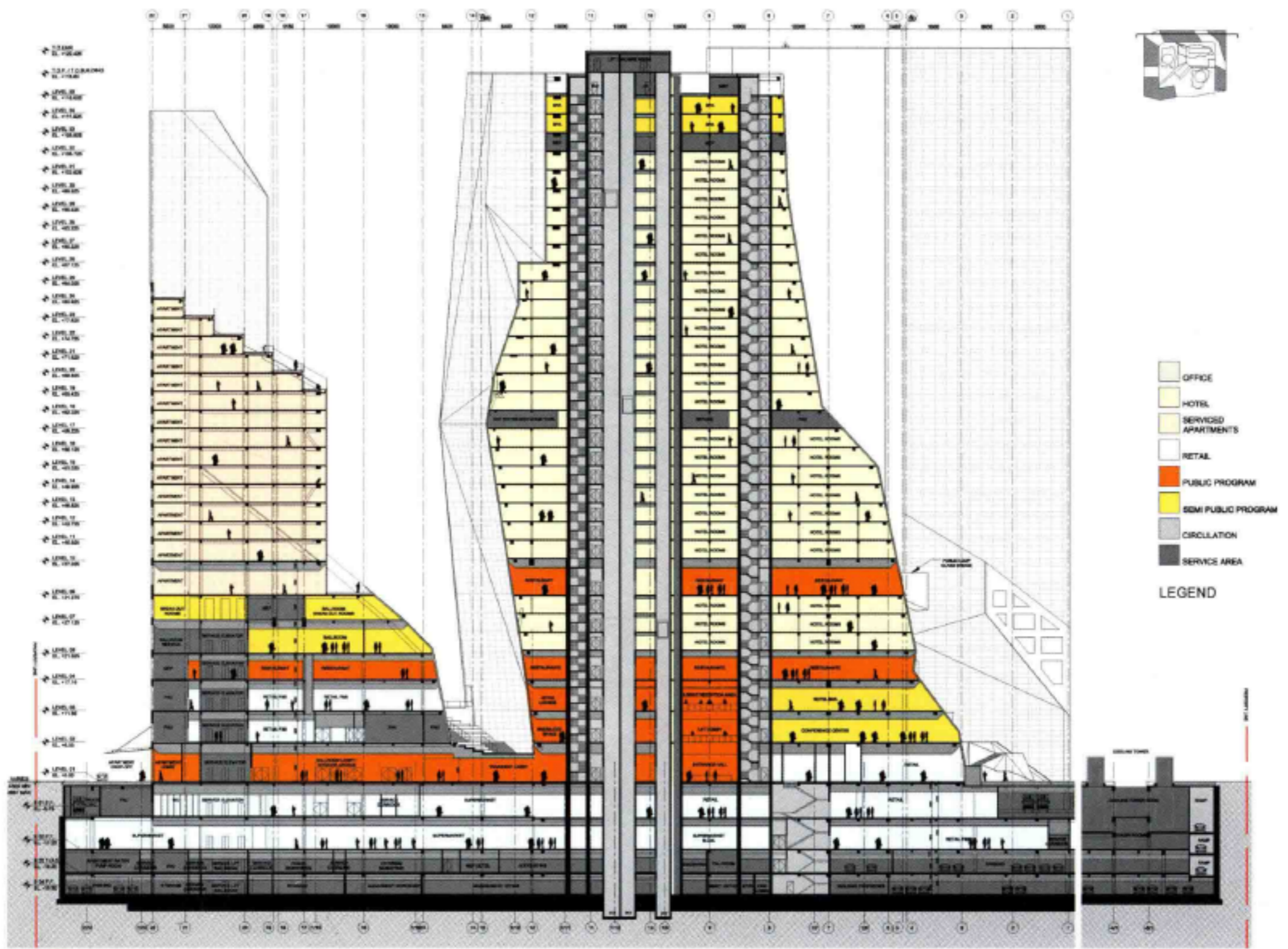
Level 11 Floor Plan 十一层平面图



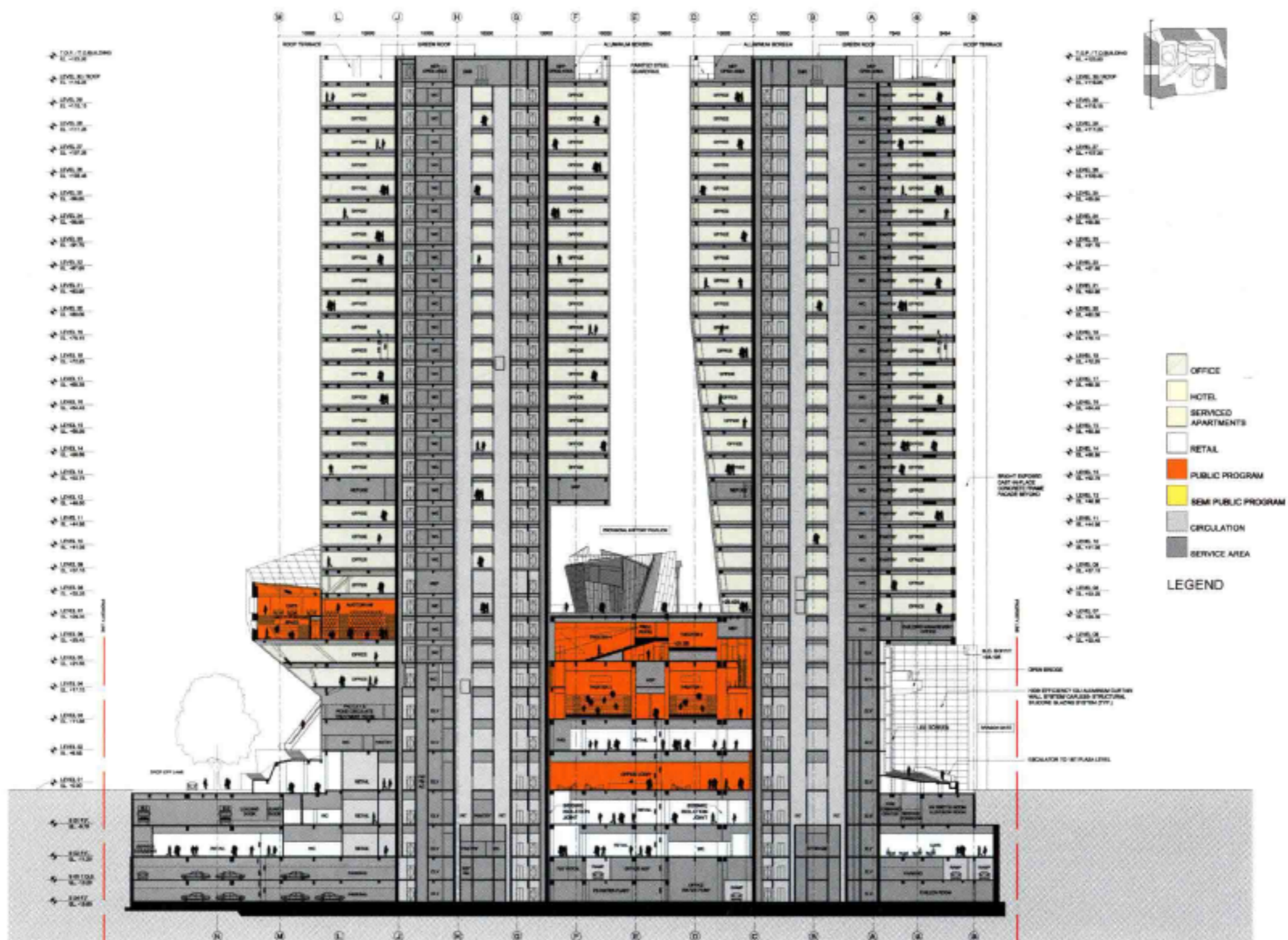
Section A-A A-A 剖面图



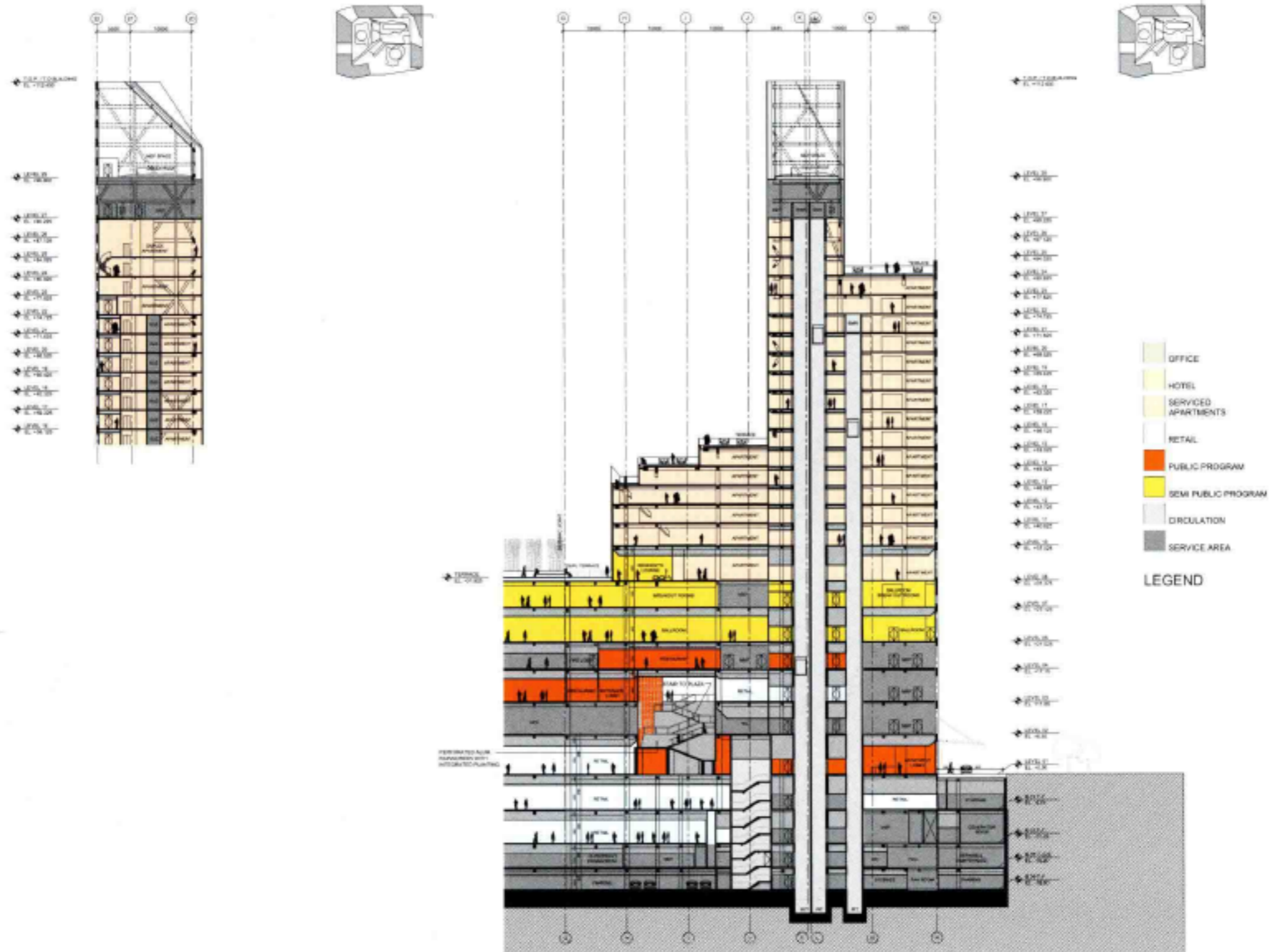
Section B-B B-B 剖面图



Section C-C C-C 剖面图



Section D-D D-D 剖面图

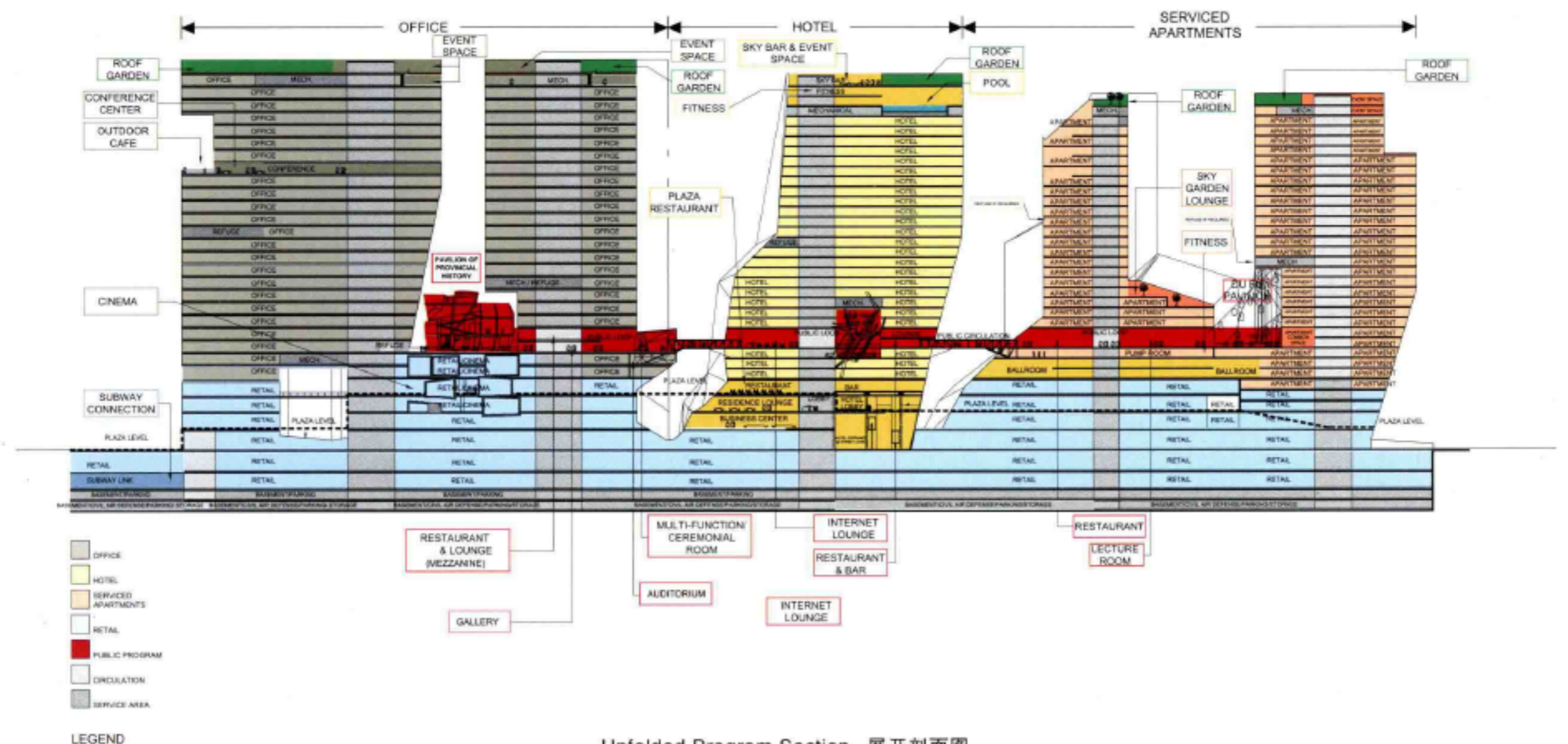


Section E-E E-E 剖面图

» Energy-saving Design

The Sliced Porosity Block is heated and cooled geo-thermally and the large ponds in the plaza harvest recycled rainwater while the natural grasses and lily pads create a natural cooling effect.

High-performance glazing, energy-efficient equipment and the use of regional materials are among the other methods employed to reach the LEED Gold rating.

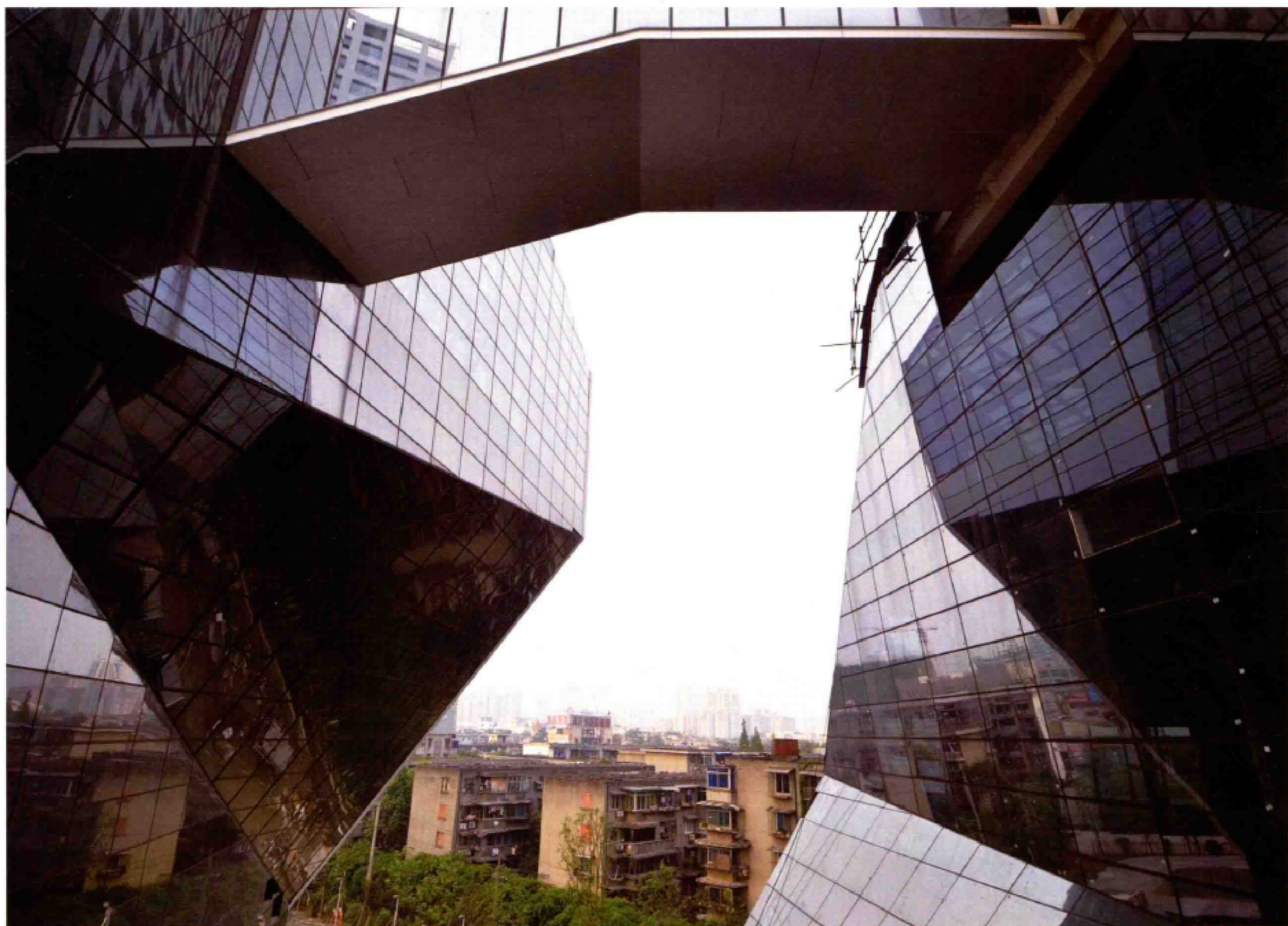


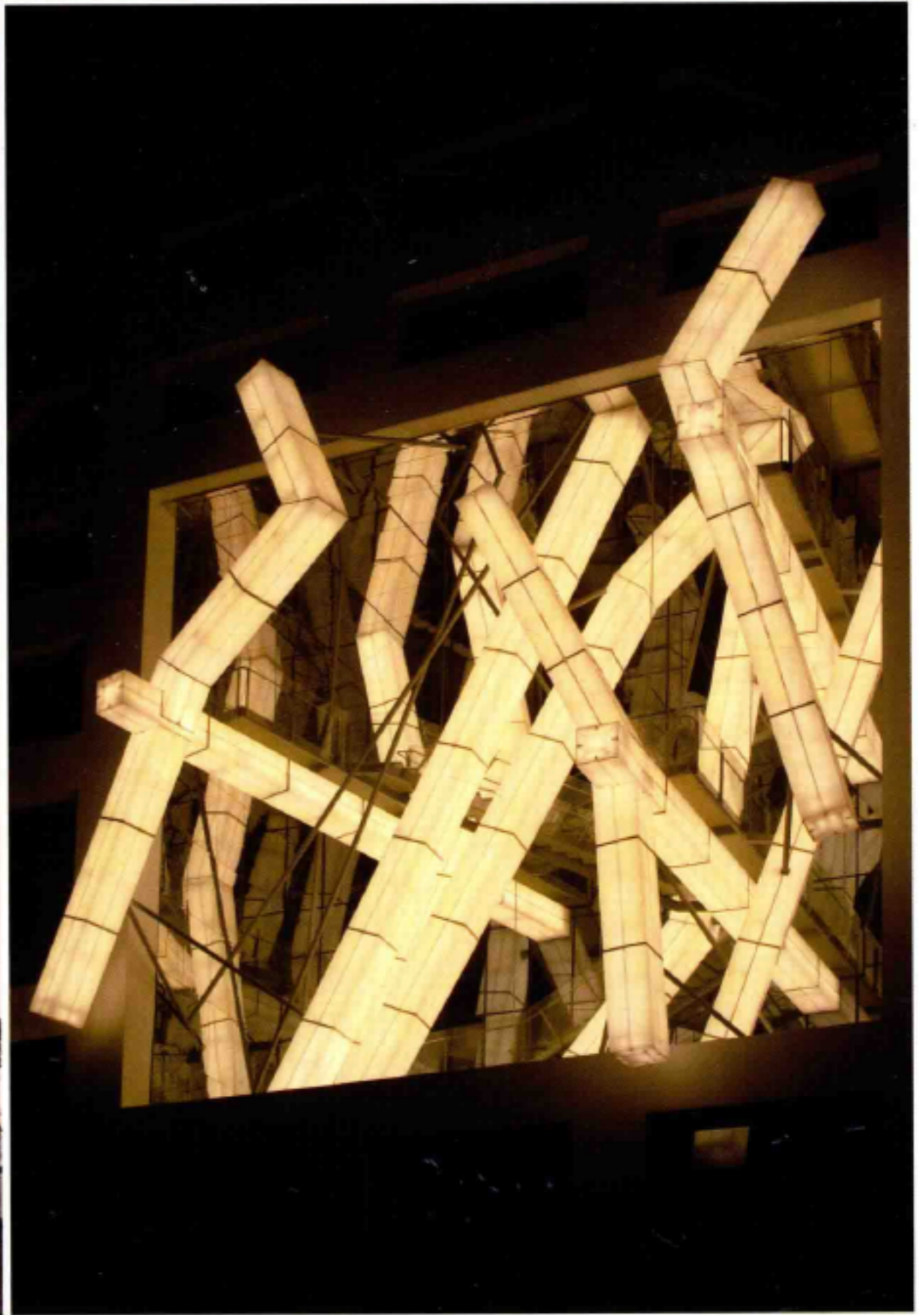
Unfolded Program Section 展开剖面图

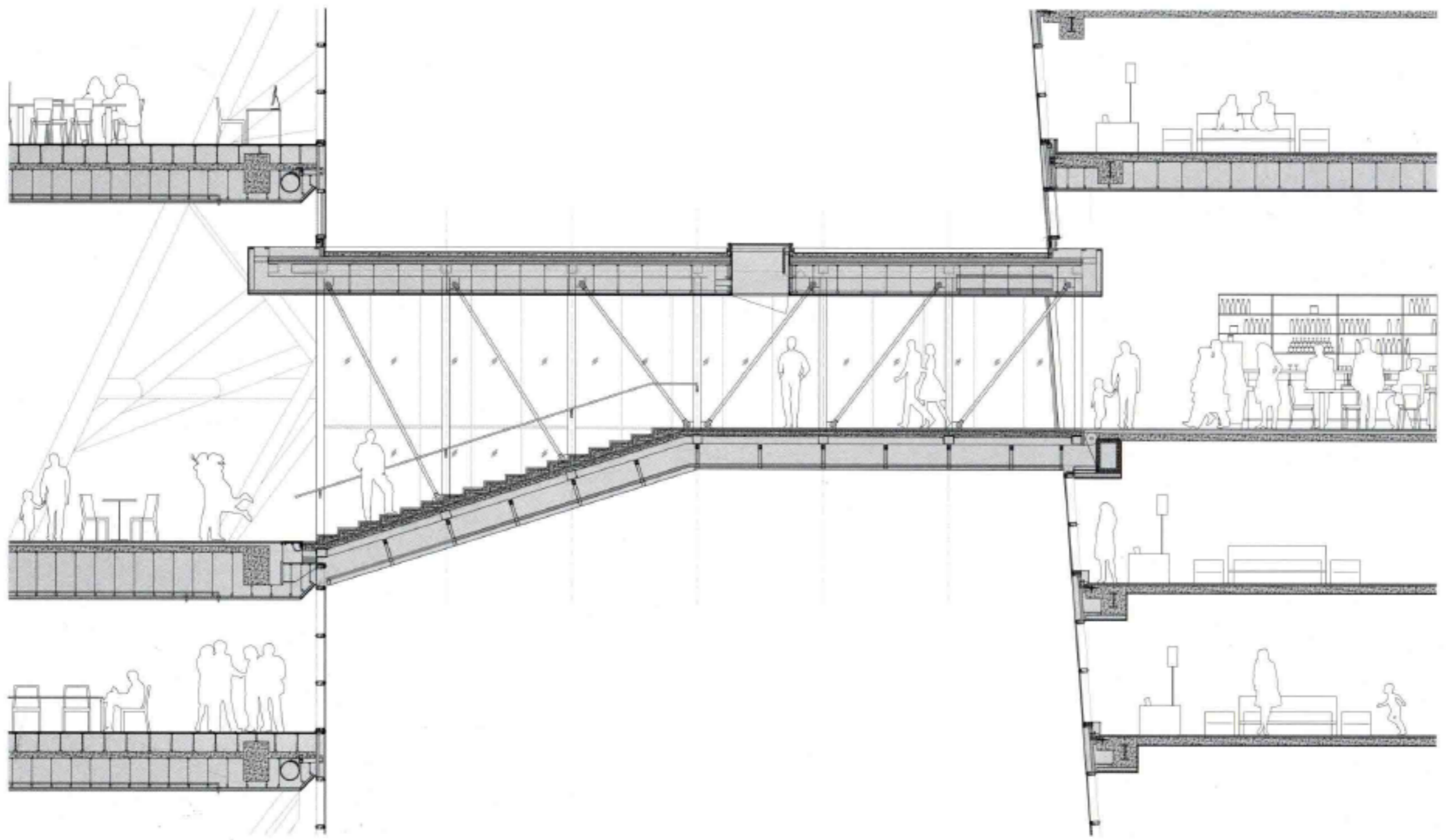


» 节能设计

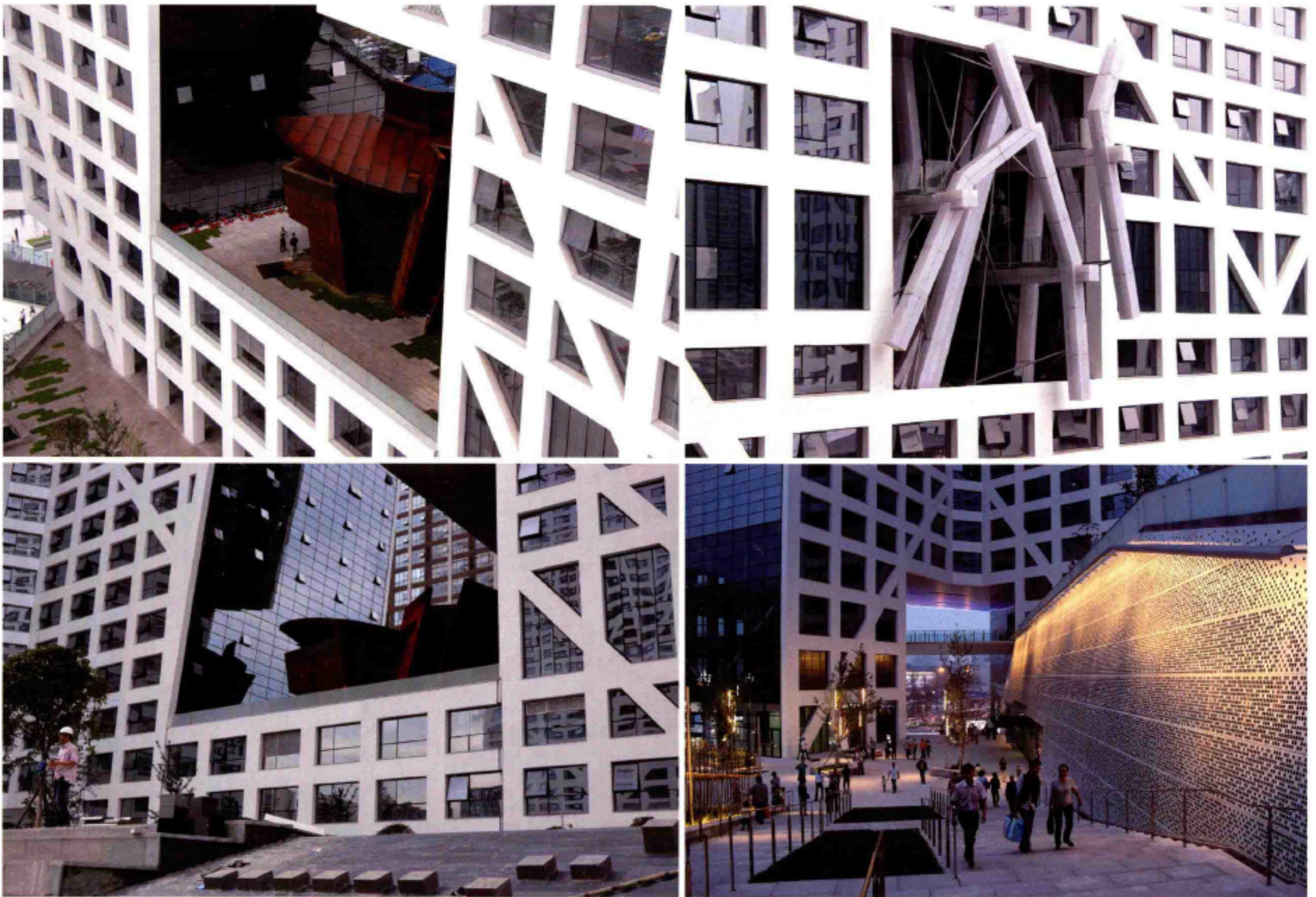
该项目使用了高性能的节能玻璃，并且使用本地的原材料，帮助建筑物达到“领先的能源与环境设计建筑评级体系”(LEED)的金奖级别。

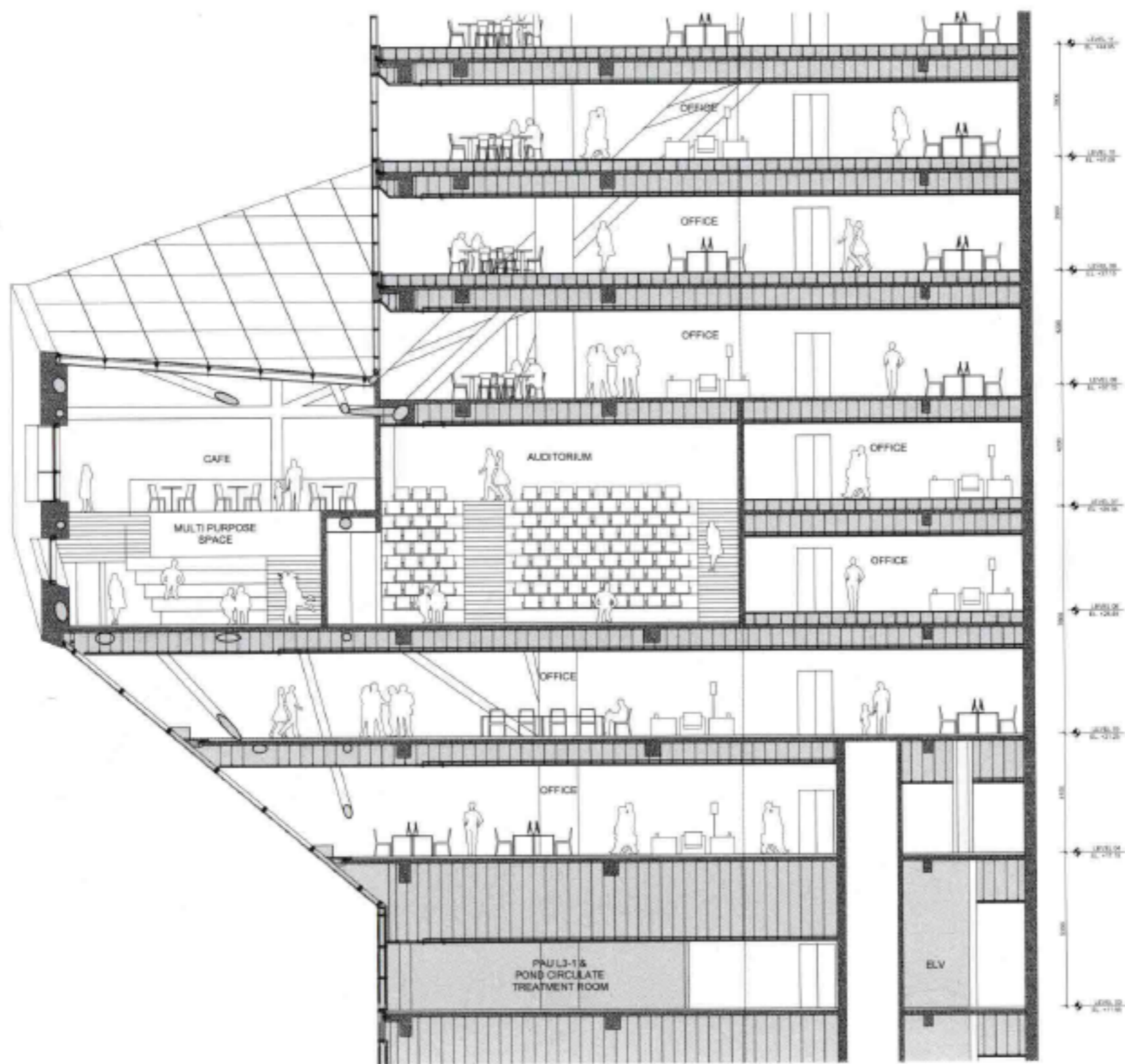




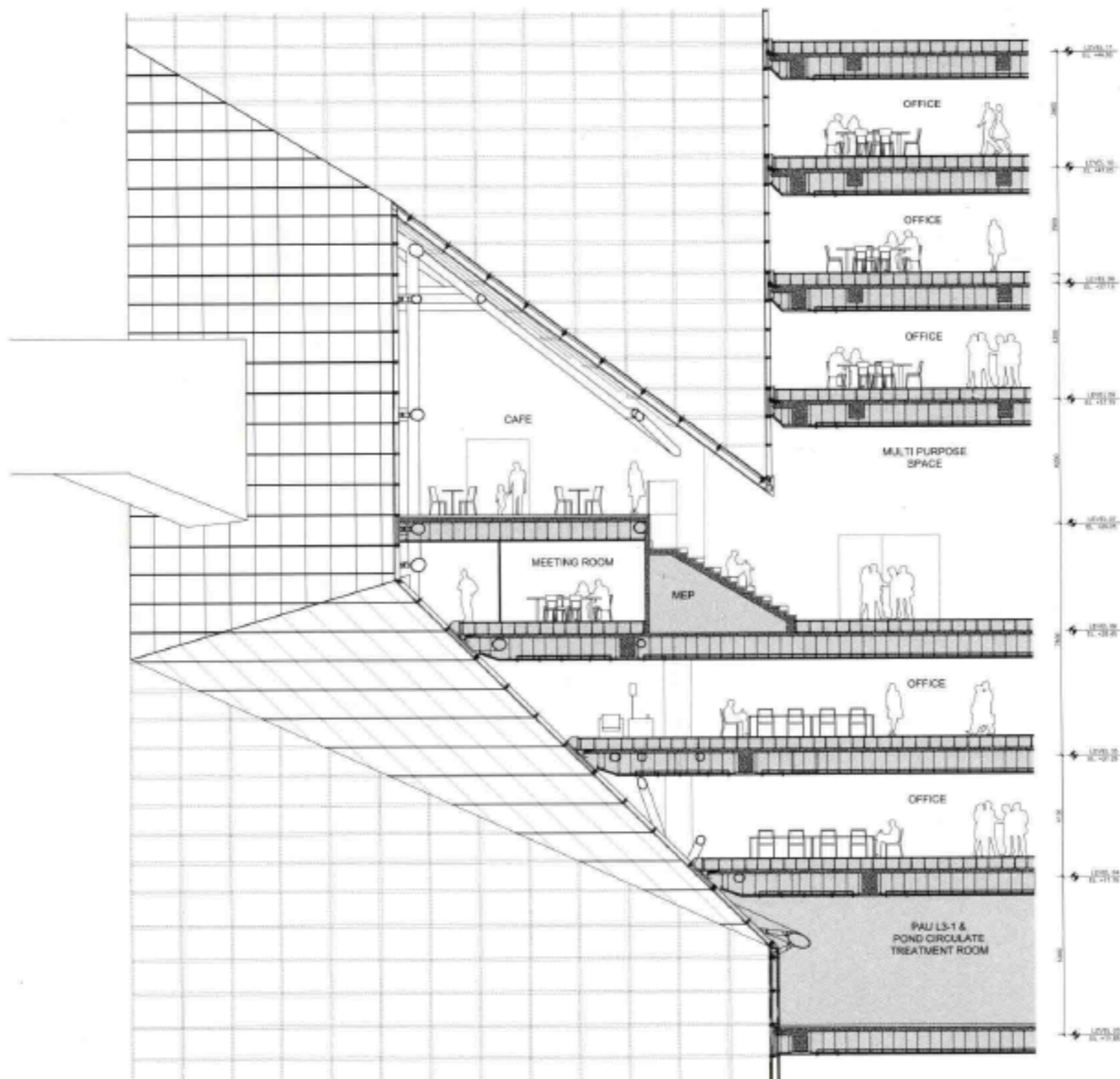


Bridge 23 Long Section 23号连廊纵剖面图





Curtain Wall Wall Section at Auditorium 1
礼堂玻璃幕墙剖面图 1



Curtain Wall Wall Section at Auditorium 2
礼堂玻璃幕墙剖面图 2