

Site plan
總平面

Client: Lin Tongyan International (Chongqing) Project
Consultation Co., Ltd
Design /Completion: 2004/2006
Site: Hi-Tech Park of Chongqing New North Zone
Floor area: 6 500.0 m²
Structure: reinforced concrete frame structure
Function: office and meeting center etc.

業主: 林同棧國際(重慶)工程諮詢有限公司
設計/竣工: 2004年—2006年
地點: 重慶北部新區高新園
建築面積: 6 500.0平方米
結構: 鋼筋混凝土框架結構
功能: 辦公、會議等

T-Y-Lin International (Chongqing) Research and Design Center

林同棧國際(重慶)科研設計中心

Design company: Tanghua Architect & Associates Shenzhen, P.R.C

設計單位: 深圳市湯樺建築師事務所

In hierarchical order from outside to inside, the space is divided into the following parts: Outdoor-shadow shield-balcony-office-corridor-patio-corridor-office-balcony-shadow shield-outdoor. In this layout, such comprehensive factors as the local climate, light, environment, and nature of work, so as to obtain a proper space for design and office in a certain environment, with specific geographical features.

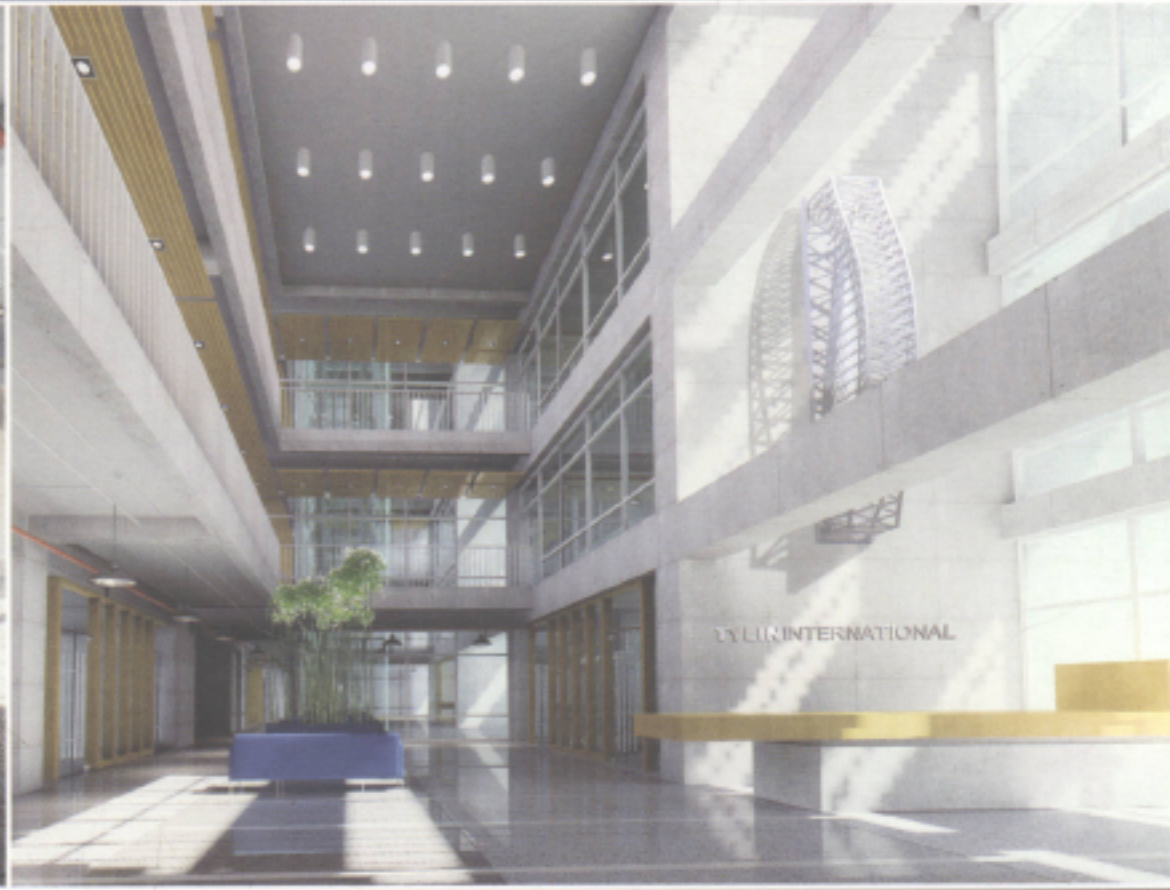
Functionally, the space is divided into three major parts: space for general office, space for personal office, and shared patio. The floors are organized into two types of office spaces by the shared patio, namely such space units as the general office for development, and personalized individual studio, library, and small meeting room, which are connected by the interlaced gallery in the patio.

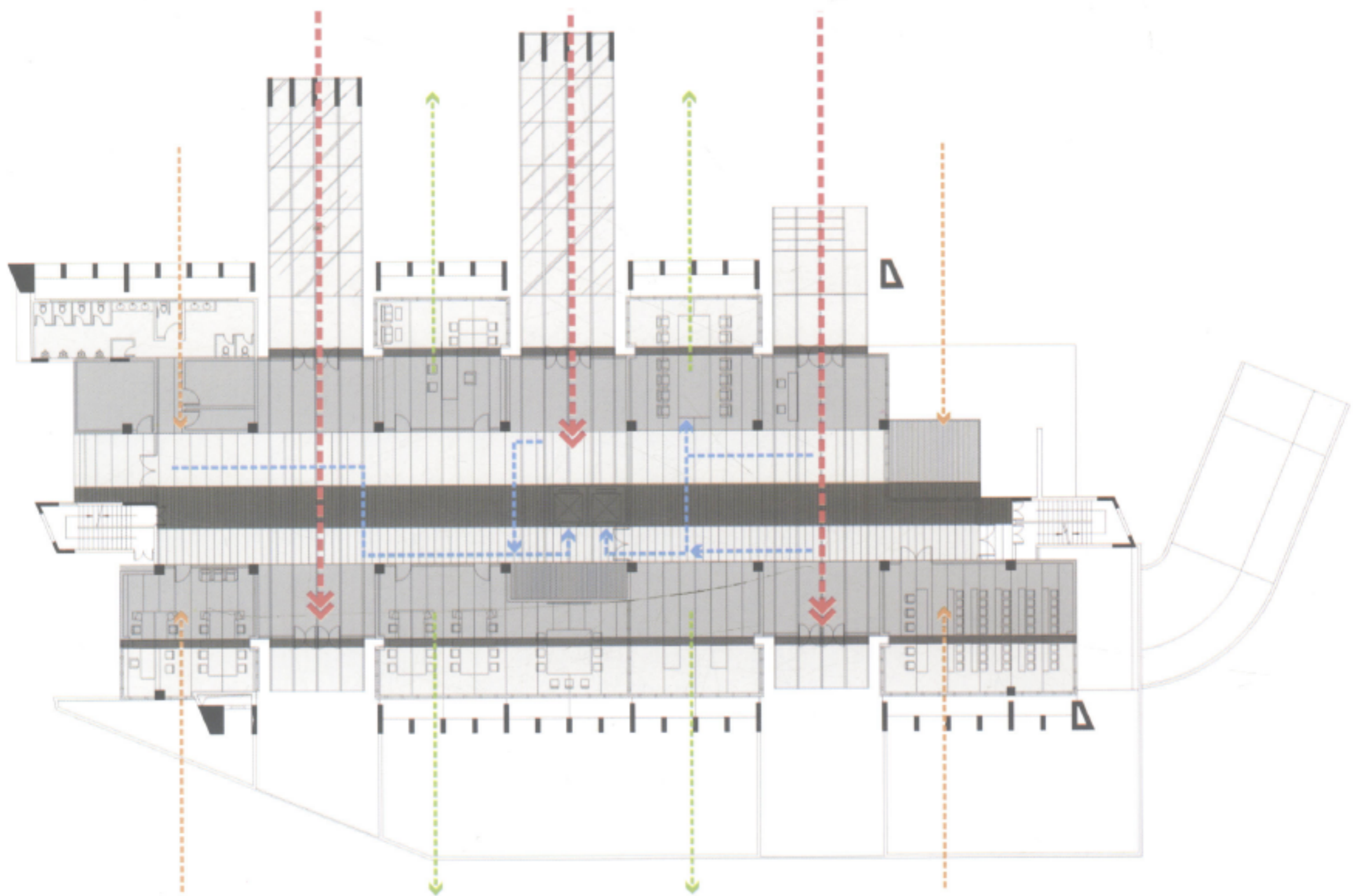
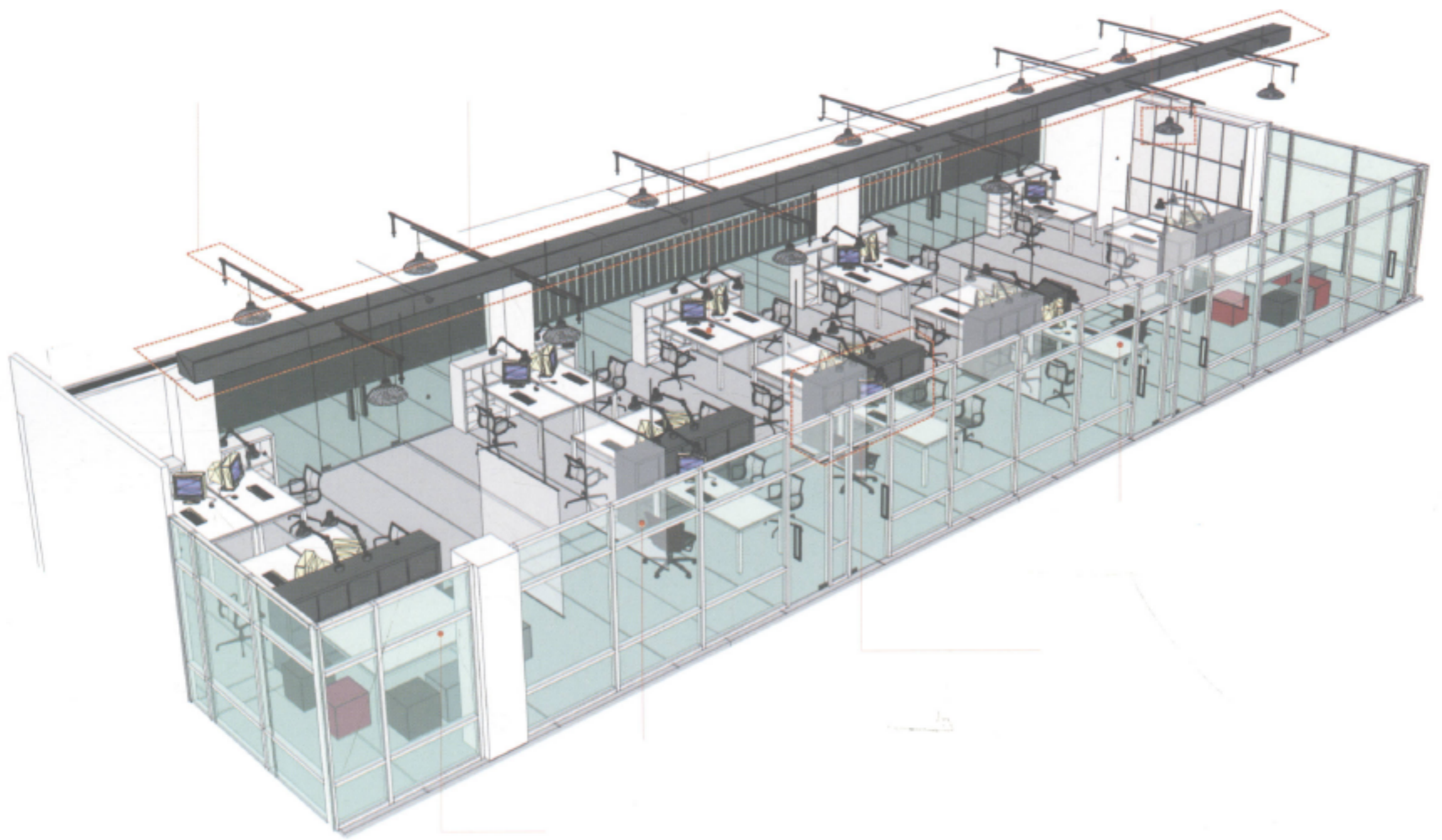
空間構成按由外到內的層次順序分為: 室外—遮陽板—陽臺—辦公室—走廊—中庭—走廊—辦公室—陽臺—遮陽板—室外。這種布局方式考慮了當地的氣候條件、光線環境及工作性質等綜合因素, 以獲得一個在特定環境中的、具有地域特征的適宜的設計辦公空間。

空間構成按功能分為一般辦公空間、個性辦公空間和共享中庭空間三大部分, 各樓層以共享中庭組織兩種不同形態的辦公空間, 既開發式的通用辦公室、個性化的個人工作室、圖書館及小型交談室等空間單元, 并以中庭中錯落的連廊進行聯系。



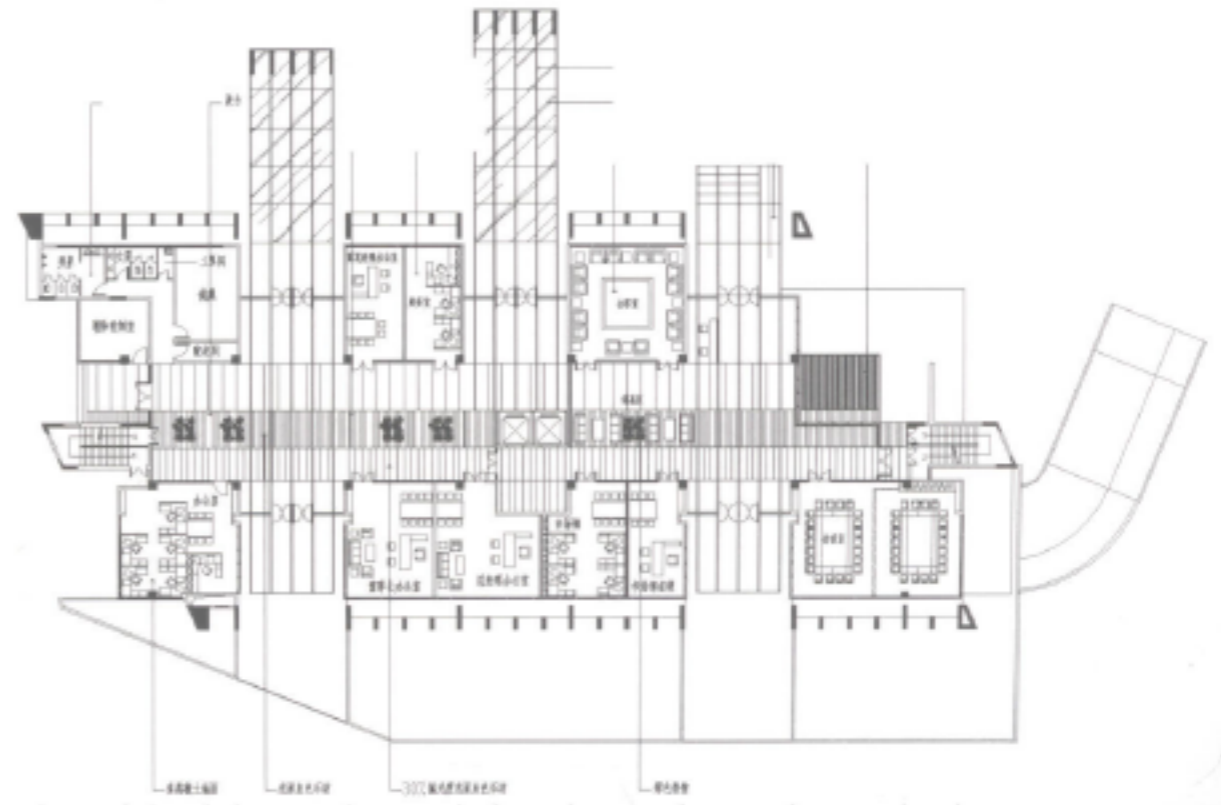




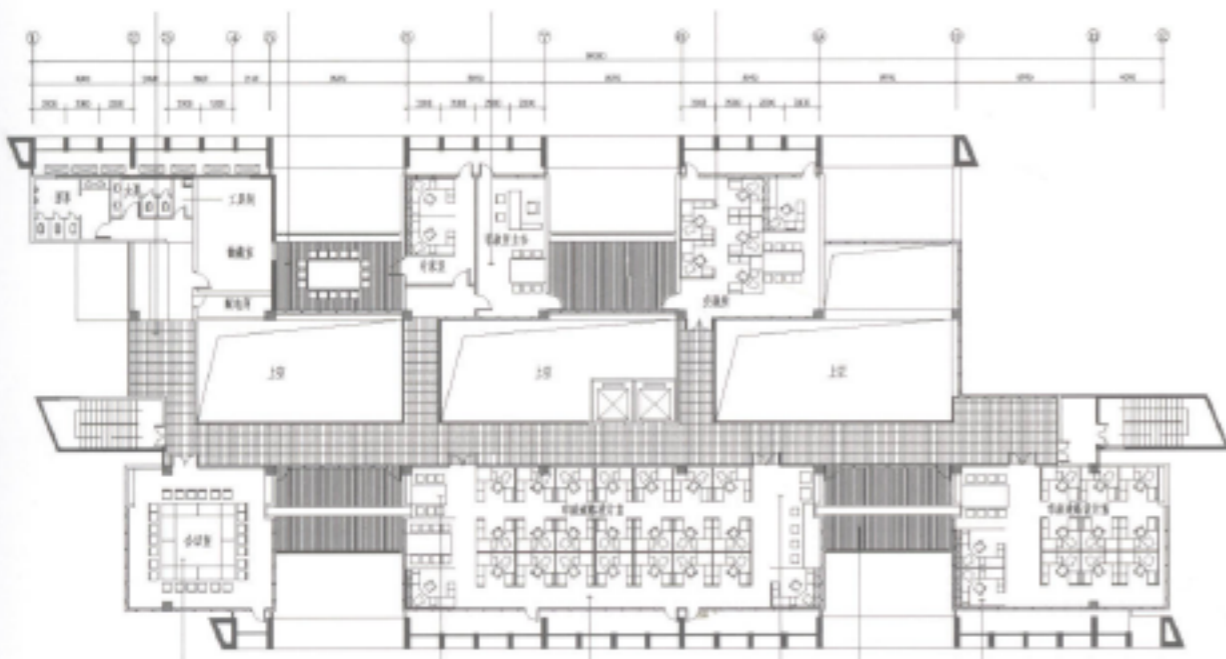




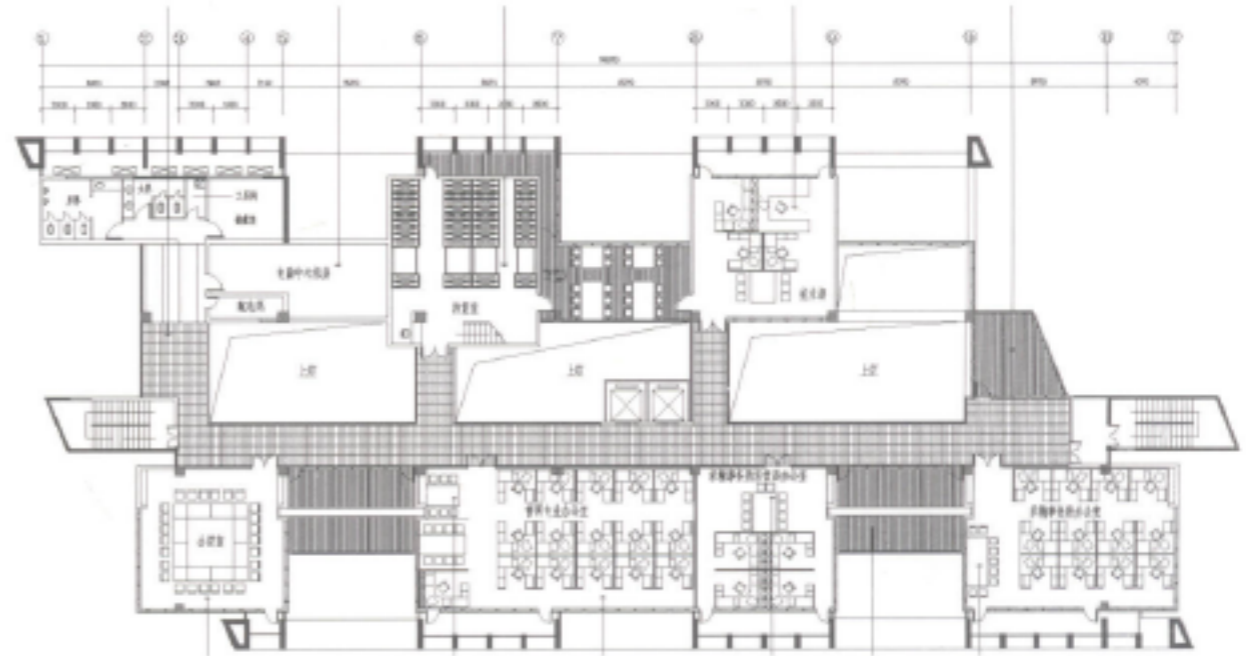
Basement 1st floor plan,interior
地下一層室內平面圖



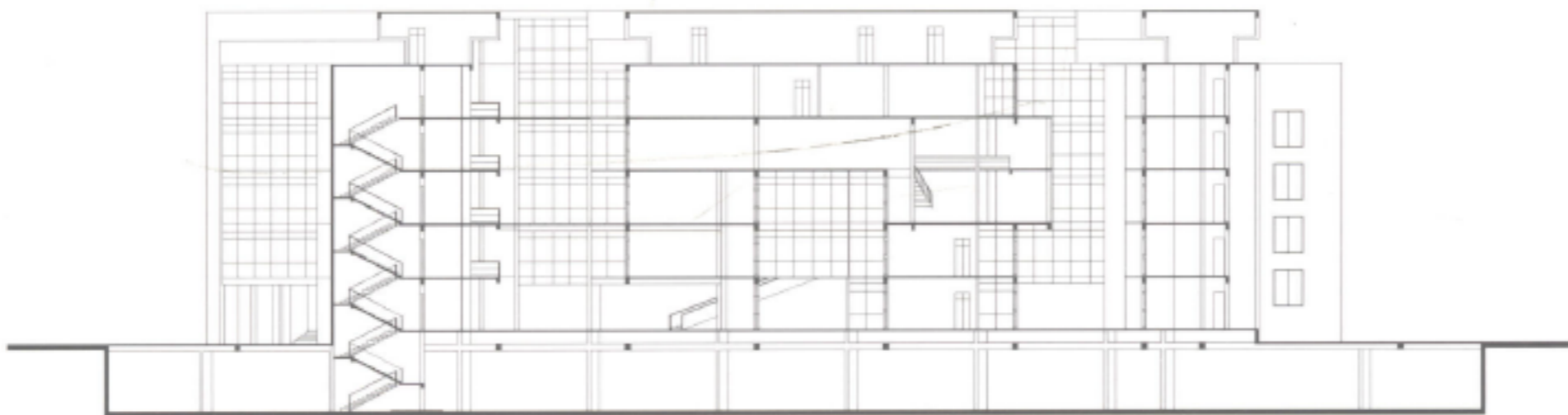
1st floor plan,interior
一層室內平面圖



2nd floor plan,interior
二層室內平面圖



3rd floor plan,interior
三層室內平面圖



Section
剖面圖