

Front View 建筑正立面

Museum of Memory and Human Rights

The Museum is conceptually organised in two moments: the Exposition Beam and the Base. The first, elevated, housing the history, the information, and the act of living memory, is open on both ends, like someone who lets life pass naturally. The other, the Base, in a first step deep as a mine, where the study, the production, the invention, the seminars, the knowledge of the land and the territory are located; in another step is the necessary support by the administration sectors. The Beam is a specific museographical space and the Base is a museological one, a place of study and support.

Along both sides of the Exposition Beam are the circulations, bathrooms and support systems, lightened by the translucency of the perforated copper plates and the second external skin, made of transparent glass, thus creating a totally controlled inner environment. On a second effect, the light also penetrates all the exposition space through the semi-opaque glass walls.

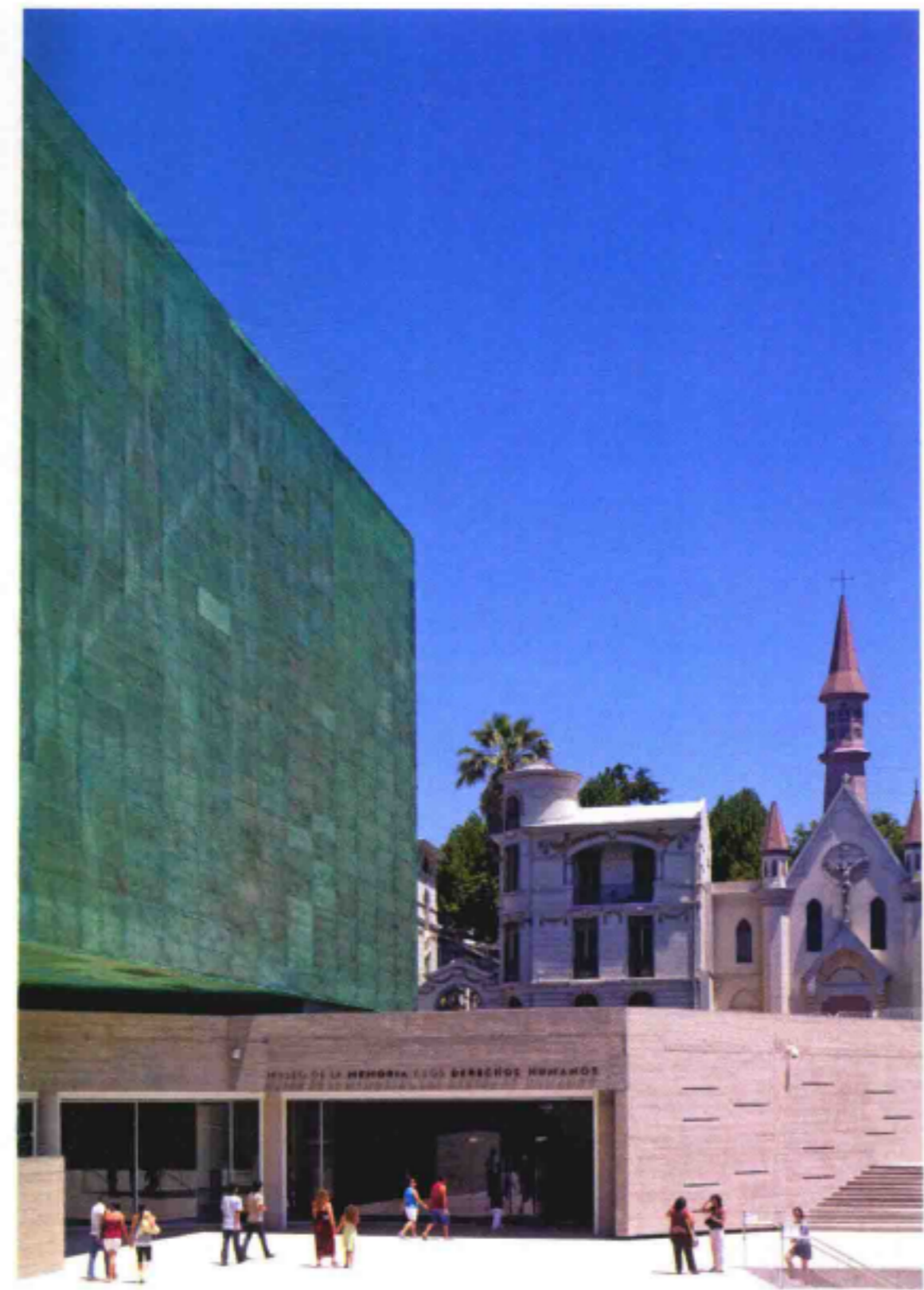
记忆与人权博物馆

博物馆由两部分组成：展览横梁和底座。展览横梁架空而建，里面是历史、信息以及生命记忆活动展览。底座下层像一座金矿，着重于地质和地形形成过程以及地貌的研究；底座里还包含其他的行政辅助设施。横梁注重图形展示，而底座注重理性研究。

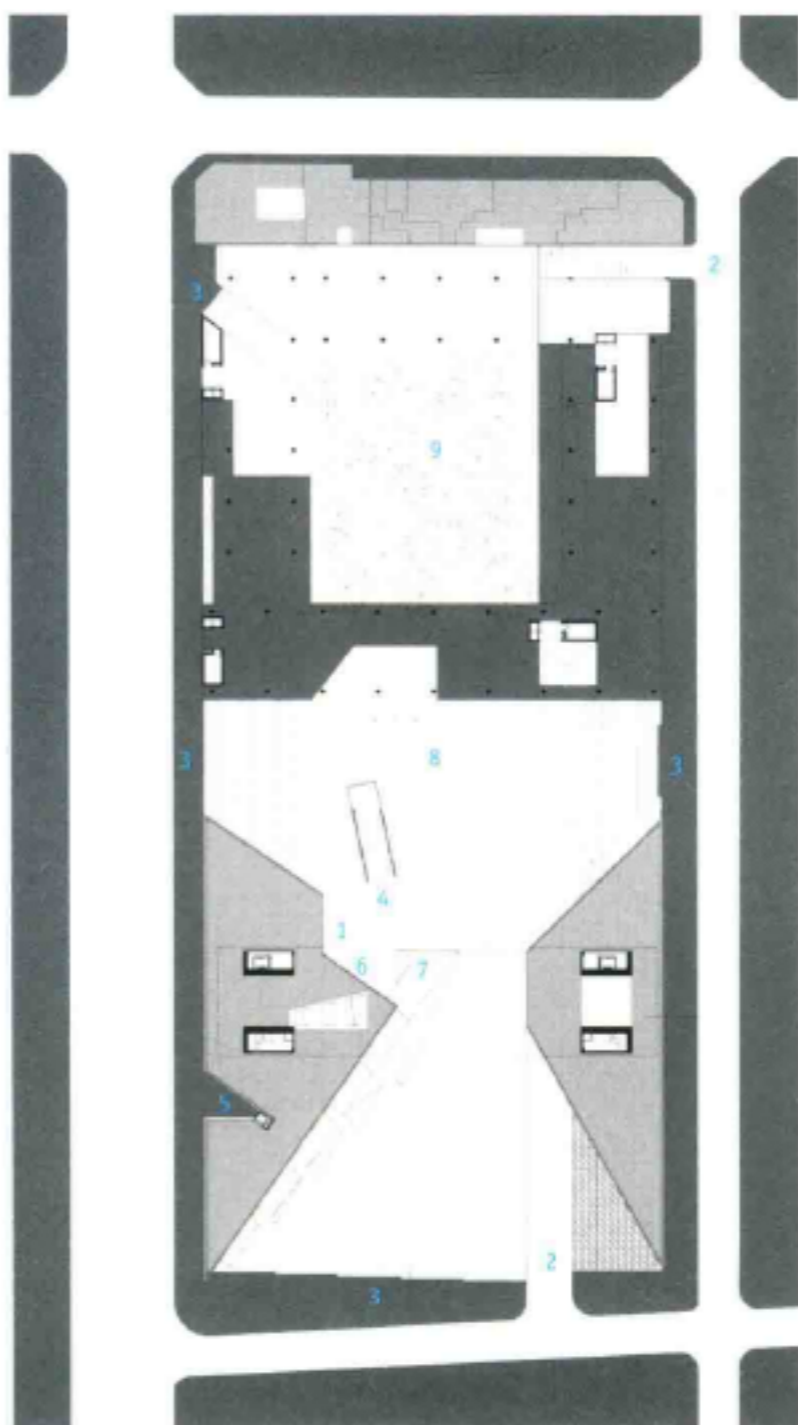
展览横梁的两侧是走廊、洗手间和辅助设施，半透明穿孔铜板和透明玻璃外墙令室内空间显得十分明亮，阳光透过半透明玻璃墙渗透到展览空间。



Exterior 建筑外立面



建筑外观 Exterior



- 1. museum access
- 2. parking access
- 3. pedestrian access to the square
- 4. memorial alfredo jaar
- 5. lift access
- 6. subway connection
- 7. parlatorio
- 8. square memory
- 9. garden desires

- 1. 博物馆入口
- 2. 停车场入口
- 3. 广场入口
- 4. 记忆博物馆通道
- 5. 电梯
- 6. 地铁连接口
- 7. 天井
- 8. 记忆广场
- 9. 欲望花园

Photo: Cristobal Palma

Cultural

Completion Date: 2009

Architect: Estudio America



建筑内部 Interior



室内楼梯 Interior stairs