

1. start in the lecture hall
2. historical trench
3. garages' views over the roof
4. waste bunker

1. 演讲厅
2. 历史纪念墙向
3. 车库
4. 垃圾站

## ZMS Administration Building

The task to design a new administration building, reorganise the power station compound and create a new noise protection barrier offers the chance to dissolve the dichotomy of landscape and building to realise the deconstruction of those categories into one designed environment, to be experienced in a dynamic and curious fashion. Four hundred and fifty metres long and up to thirteen metres high, the central part of a noise protection wall with a forty-five-degree incline simultaneously constitutes a new administration building for over 140 metres. The superimposition of building and earth wall allows one to explore and experience the landscape of this entire ensemble on various levels.

An auditorium with a visitor centre unfolds from this landscape and opens up towards the power station compound. It separates from the earth wall on the upper level, resting on two radial supporting walls and cantilevers up to twenty metres over the landscape. A long panoramic glass façade leans towards the power station. The administration building underneath is sculpted into the earth wall. Meeting rooms and common areas penetrate through the wall to establish a relationship with the bordering village.

The main structural challenges arose from the fact that they had to create an earth wall of up to thirteen metres high that is capable of supporting not only itself at a forty-five-degree slope, but also to accommodate a building within it, situated at about six metres above grade. It was very important to cover the building in landscape and vegetation that appear to be continuous, without indication of the shape of the building underneath.

## ZMS行政楼

项目包含设计一座新行政楼、重组发电站和打造一个新的噪音防护墙。建筑师利用这一机会将景观与建筑结合在一起，打破了类别的界限，打造了动感而奇特的新建筑样式。噪音防护墙长450米，高13米，其中心部分的行政楼延伸了140米。建筑与挡土墙的叠加使人们能够全方位地欣赏场地的景观。

一个带有游客中心的礼堂从这个景观区域展开，并朝向发电站。它的上层与挡土墙相分离，依托于两面径向承重墙之上，悬在20米的高空之中，一面全景玻璃外墙直接朝向发电站。下方的行政楼则与挡土墙合为一体。会议室和公共区域穿透了围墙，与边界的村庄建立了联系。

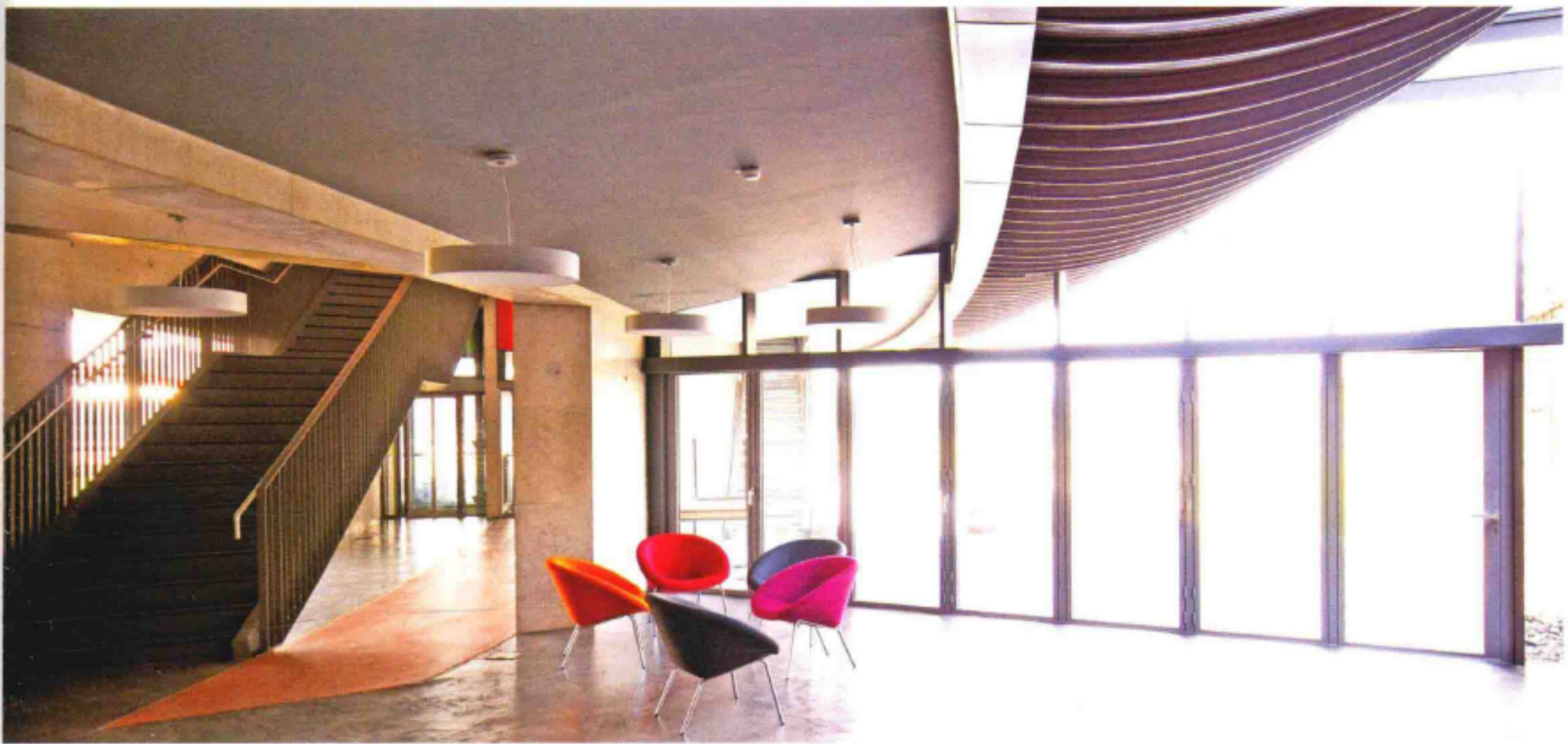


Main entrance 主入口





庭院 Courtyard



一楼大厅和楼梯 Lower foyer and stairs



走廊 Corridor

Photo: Archimedialab / Bernd Lederle

Corporate

Completion Date: 2009

Architect: Archimedialab