

2010 年上海世博会主题馆

Theme Pavilion of EXPO 2010 Shanghai



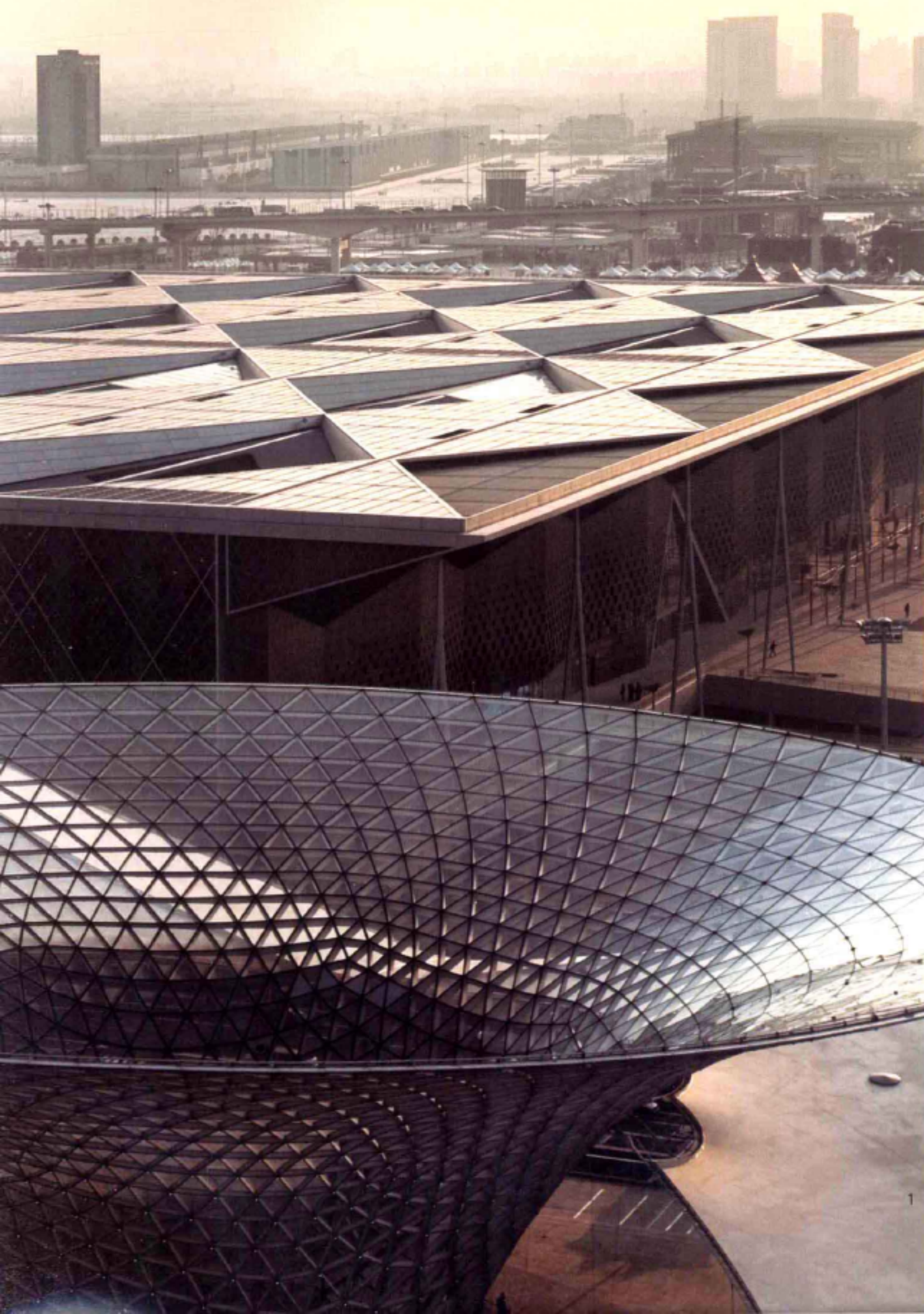


项目名称：2010 年上海世博会主题馆  
建筑地点：上海市  
设计时间：2007—2008 年  
竣工时间：2009 年  
建设单位：上海世博（集团）有限公司  
基地面积：114 558m<sup>2</sup>  
建筑面积：152 318 m<sup>2</sup>  
主要结构：钢框架结构  
主要用途：展览、会议

Project: Theme Pavilion of EXPO 2010 Shanghai  
Construction site: Shanghai  
Design period: 2007–2008  
Completion: 2009  
Client: Shanghai World Expo (Group) Co., Ltd.  
Site area: 114,558m<sup>2</sup>  
Floor area: 152,318m<sup>2</sup>  
Main structure: Steel frame structure  
Main application : Exhibition, meeting

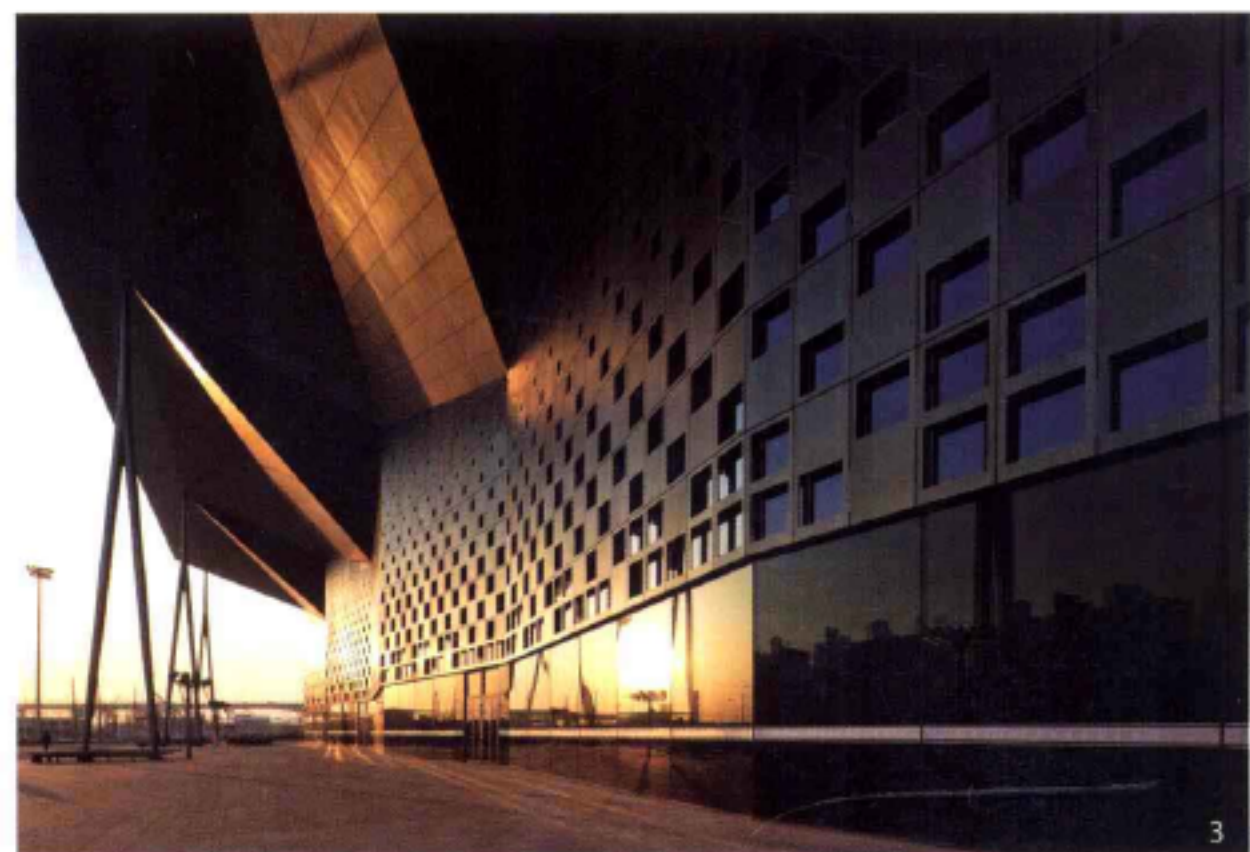


总平面图  
Site plan



1. 俯瞰主题馆屋面  
1. Aerial view of the roof



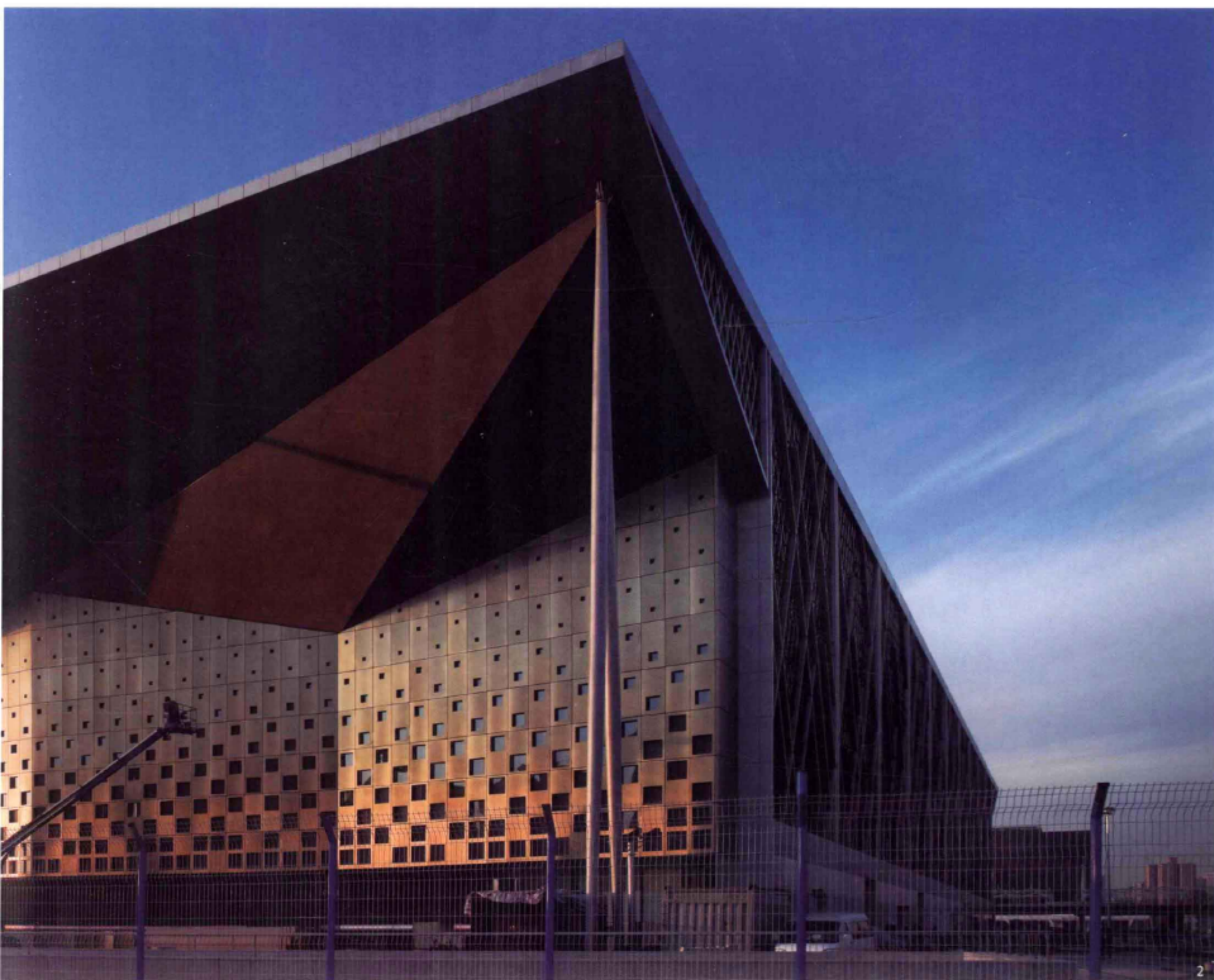


2010 年上海世博会主题馆为 2010 年上海世博会永久保留建筑。主题馆位于上海世博会规划围栏区 B 片区世博轴西侧，紧邻轨道交通 8 号线浦东周家渡站和磁悬浮世博园站，用地面积为  $11.5\text{hm}^2$ 。世博会期间，主题馆成为本届世博会“地球·城市·人”主题展示的核心展馆；世博会后，主题馆将转变为标准展览馆，成为充满上海都市情怀和内在张力的“都市客厅”。

主题馆构思来源于城市与历史，将城市肌理的“里弄片段”和传统空间的“大屋檐”作为两大设计主线：屋面将太阳能板和雨水回收钢屋面结合，形成错落凹凸的城市肌理；南北立面挑檐和“人”字形柱廊构成半室外灰空间。除此以外还打造出三大设计亮点： $180\text{m} \times 126\text{m}$  双向巨跨无柱大空间；面积近  $60\,000\text{m}^2$ 、发电功率达  $2.8\text{MW}$  太阳能屋面；东西立面上面积近  $5\,000\text{m}^2$  的垂直绿化墙面。

主题馆是一个充满城市情怀和内在活力的建筑，是一座众多创新及生态技术的集成运用的典范。设计师始终坚持设计的完整性，包括室内、景观、灯光、标识等，每个环节都在精心设计之列。





Theme Pavilion of Expo 2010 Shanghai will be preserved as a permanent building for 2010 Shanghai Expo. It is located to the west of the Expo axis in Block B of the designed fenced area of Shanghai Expo, close to Zhoujiadu stop on Metro line 8 and the Maglev stop of Expo Park, with a land area of 11.5 hm<sup>2</sup>. During the 2010 Shanghai Expo, the theme pavilion became the core exhibition space with the theme of "urban dwellers". After the Expo, it was transformed into a standard exhibition hall, an "urban living room" full of activities and vibrancy and Shanghai's urban touch.

The conception of the theme pavilion was inspired by the city and its history, adopting "alleyway fragments", which is part of the urban texture, and "large roof" of traditional space as two threads that run through the design. The roofing of the pavilion combines solar panels and storm water recycling steel rooftop, thus forming an uneven surface signifying the urban texture. The eaves of the north and south facades as well as the colonnade form the semi-outdoor grey space. In addition, three design highlights command our attention: a large space with a large span in both directions

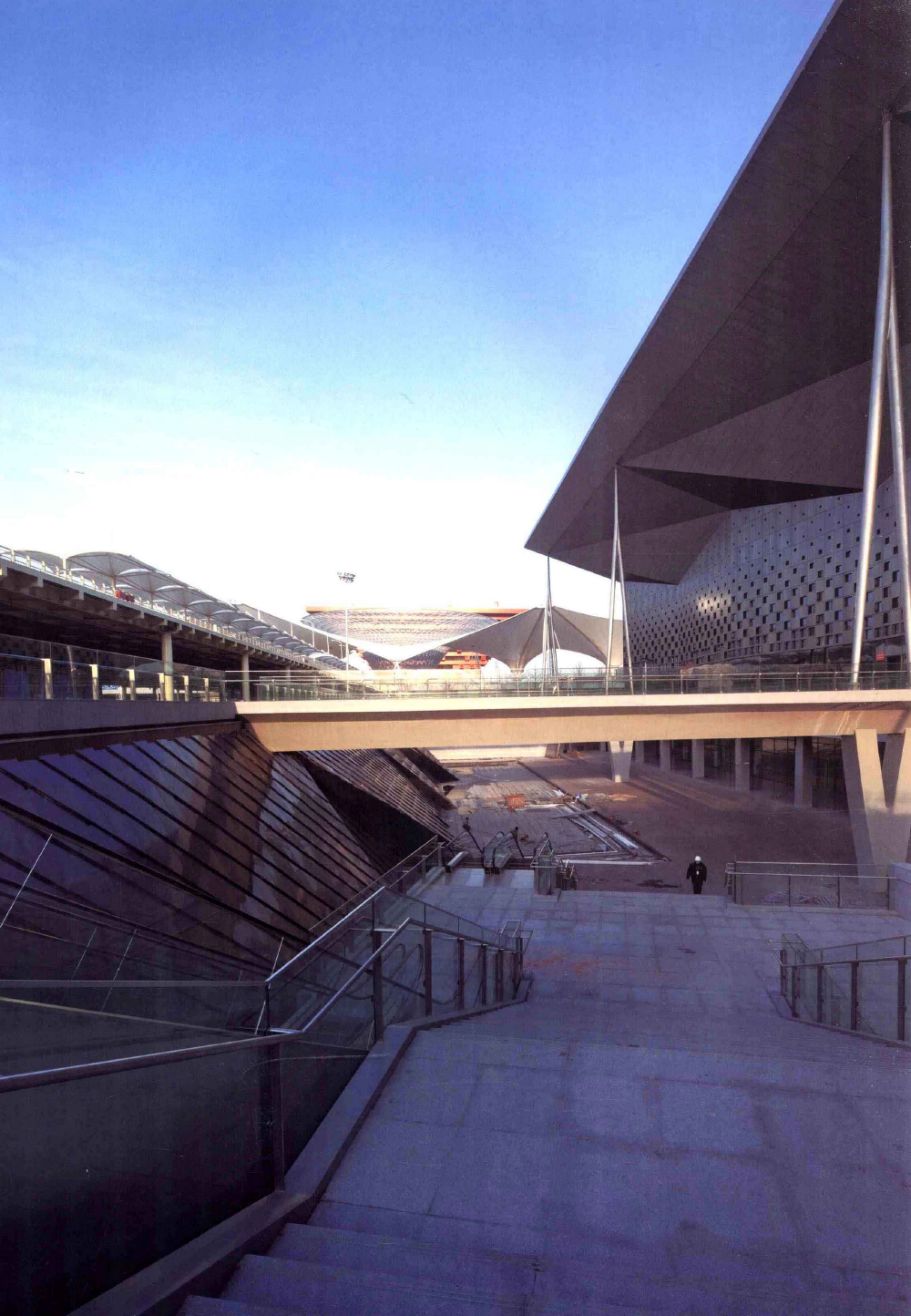
without support of 180m x 126m, around 60,000m<sup>2</sup> of solar panel rooftop with a power-generation capacity of 2.8mw, and vertical green walls on east and east facades of around 5,000m<sup>2</sup>.

The theme pavilion is full of urban touches and intrinsic vigor, and sets an example for integrating various innovations and ecological technologies. The designer has always upheld the integrity of the design, including the interior, landscape, lighting and signposting, etc. Every detail is meticulously designed.

2. 主题馆西北侧外观
3. 夕阳下的主题馆外观
4. 屋面太阳能板细部
5. 主题馆模型

2. Northwest view of the Theme Pavilion
3. Exterior view of the Theme Pavilion at sunset
4. Detail of the solar panels on roof
5. Model of the Theme Pavilion

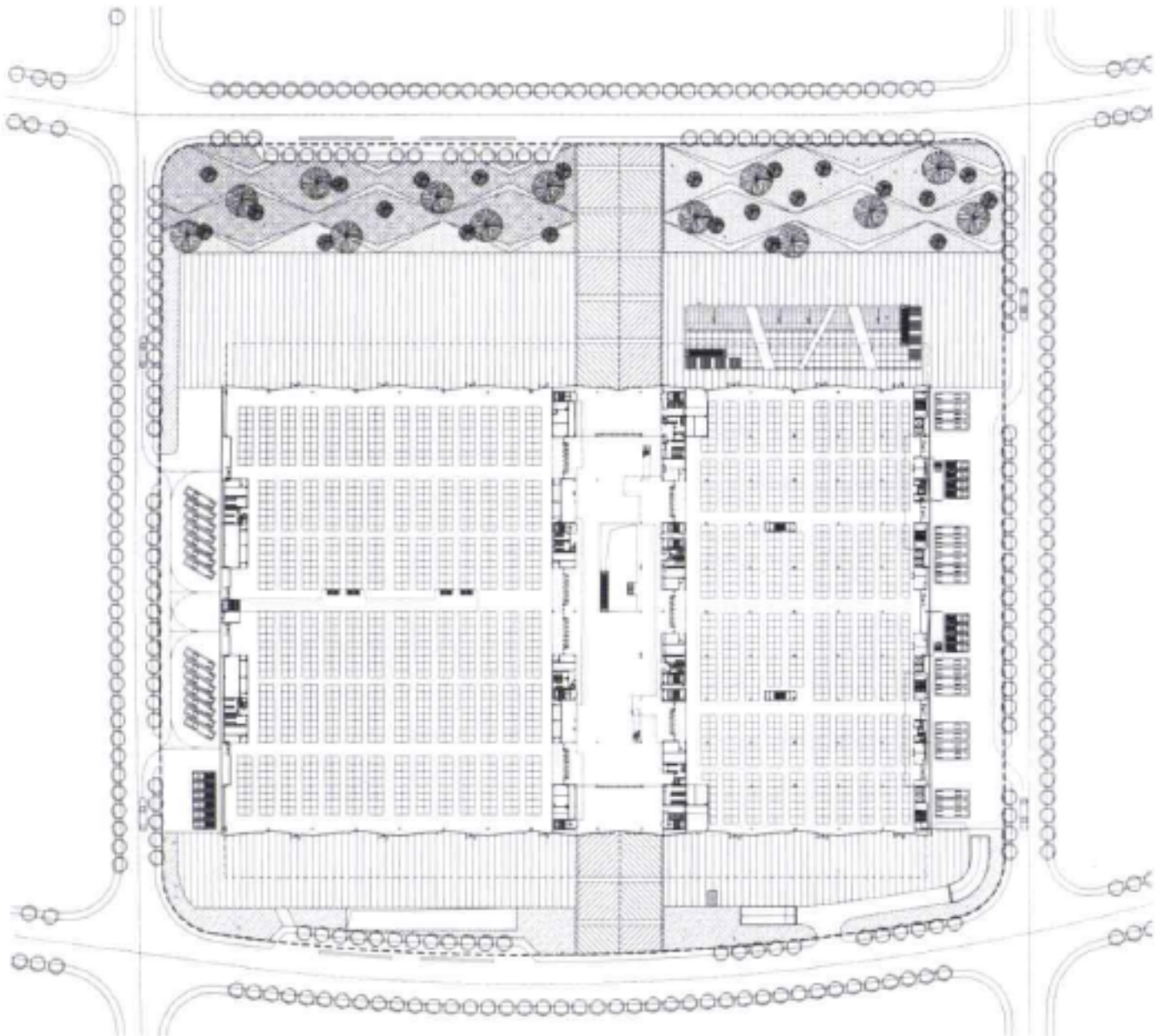
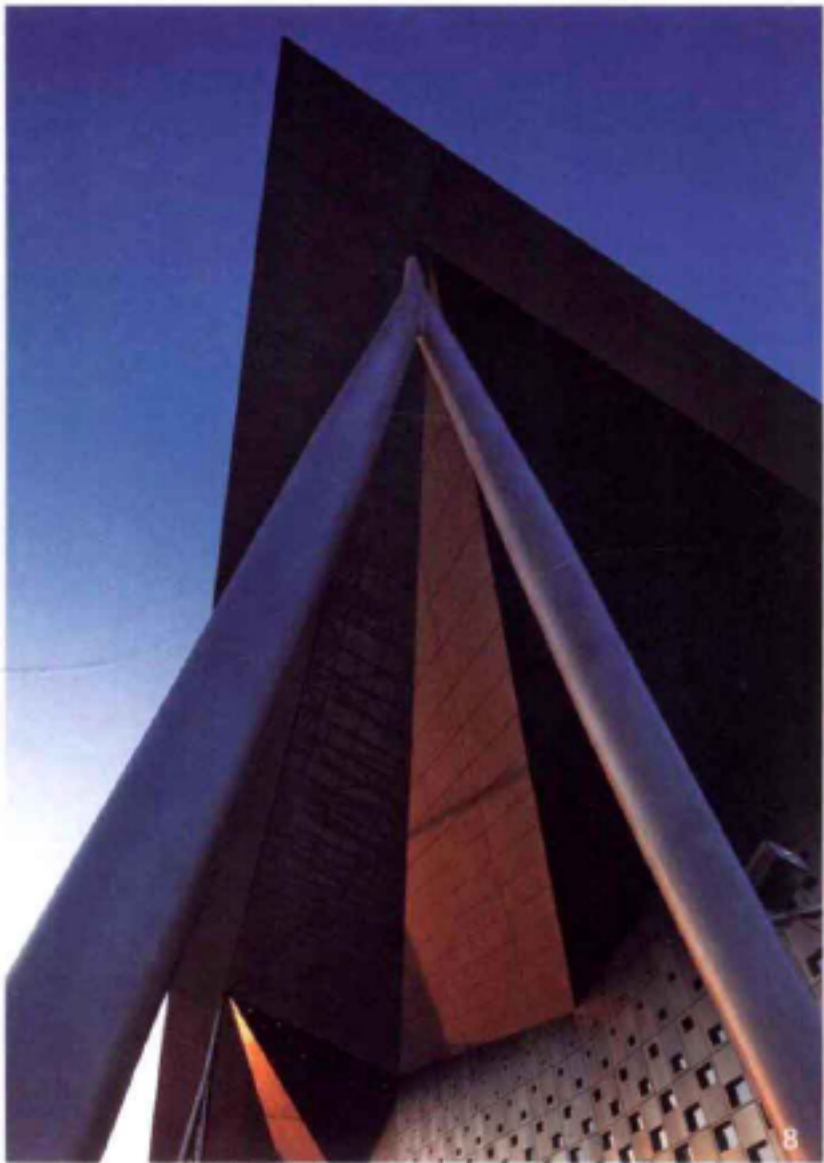
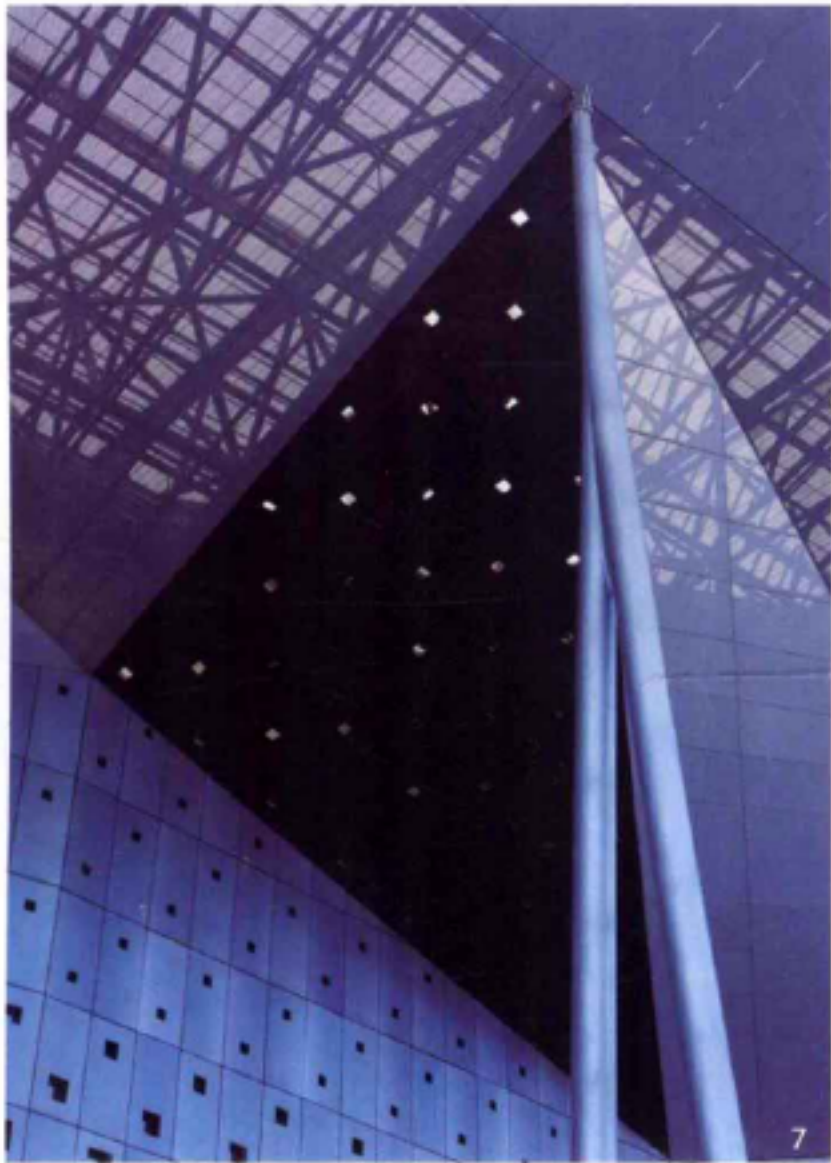




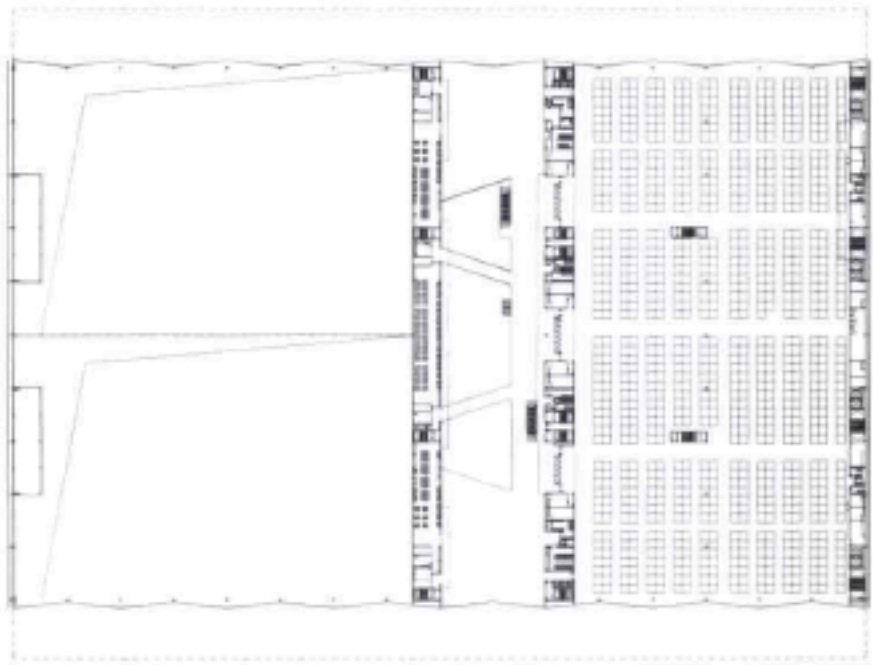


6. 主题馆东北角下沉广场  
 7.8. 人字柱细部

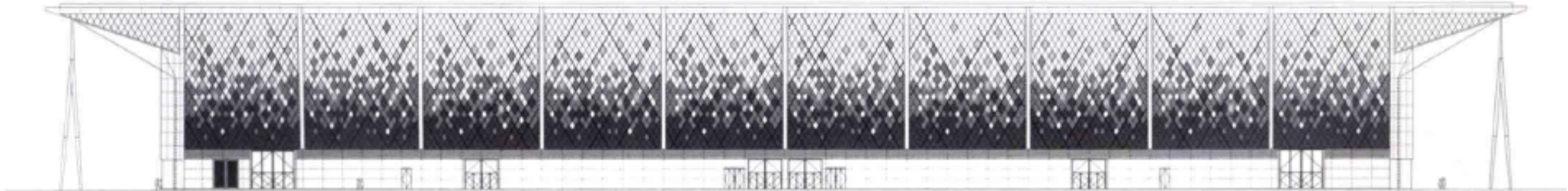
6. The sunken plaza at northeast corner  
 7.8. Detail of the "人"-shaped column



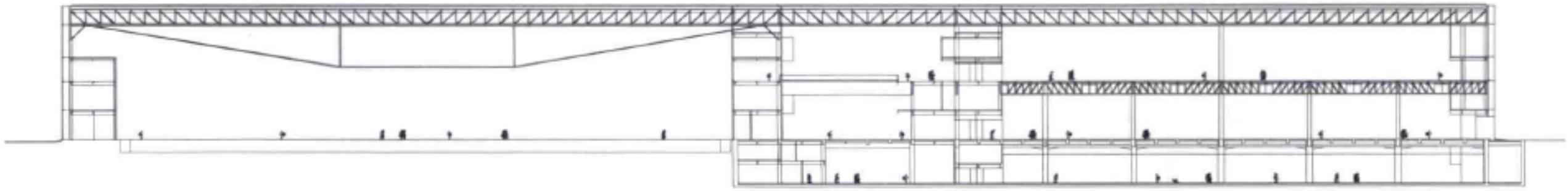
一层平面图  
 1st floor plan



二层平面图  
 2nd floor plan



南立面图  
 South elevation



剖面图  
 Section

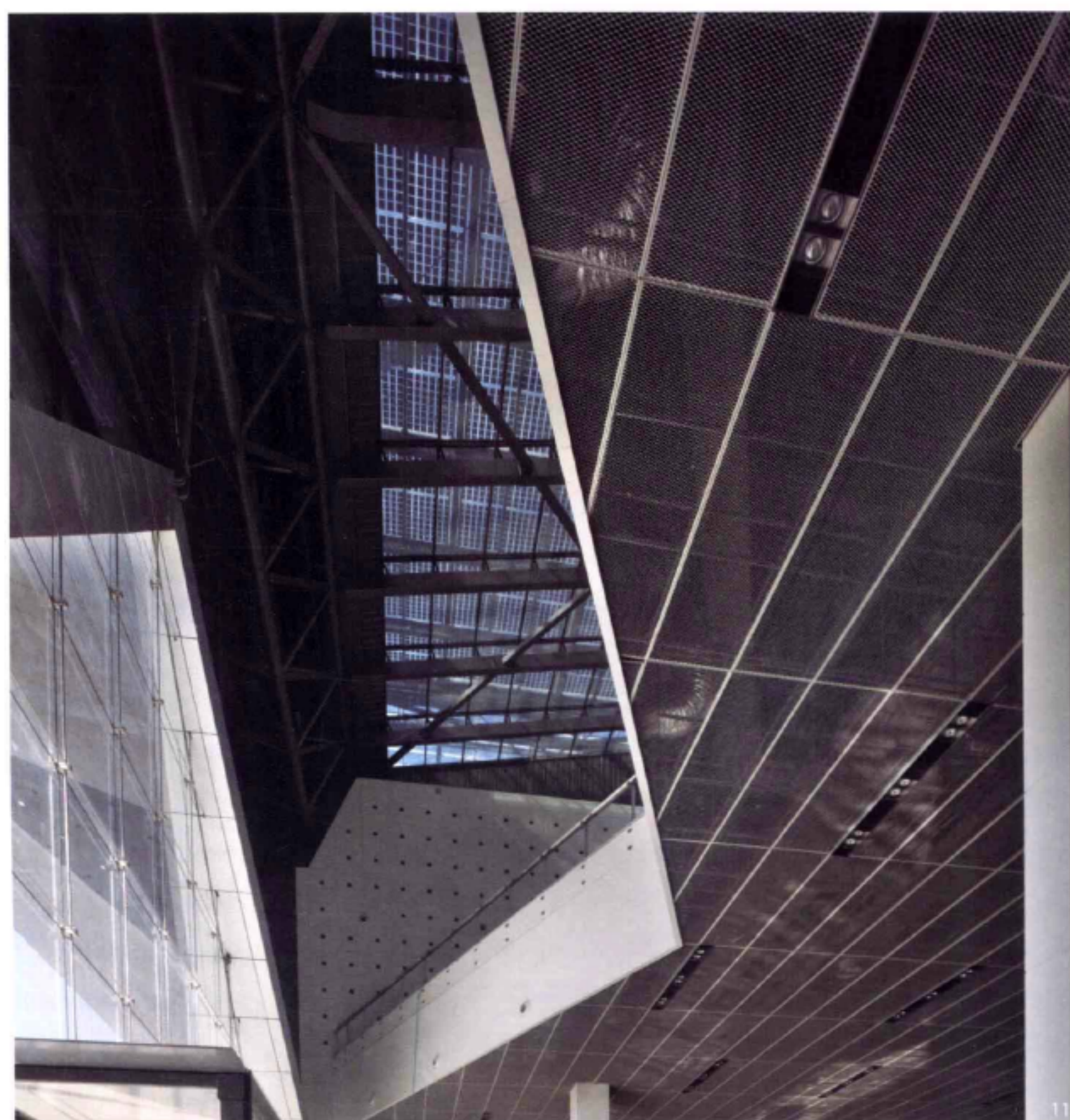








10



11

9. 主题馆北侧入口室内

10. 主题馆地下一层中厅

11. 主题馆北侧入口大厅仰视

9. Interior view of the north entrance

10. Atrium on the 1st basement

11. Looking up at the north entrance hall