

# 西安音乐学院演艺和交流中心，陕西，中国

## The Performance Centre and Academic Exchange Centre of Xi'an Conservatory of Music, Shanxi, China, 2016

建筑设计: 安军

Architect: AN Jun

西安音乐学院演艺和学术交流中心项目位于校园东北角，建筑面积68,000m<sup>2</sup>，包括一个1000座的交响乐厅，一个266座的歌舞排练厅和两个186人的小排练厅。项目地处西安长安路与南二环交汇处的重要城市节点上，音乐厅的整体设计融入城市景观，成为城市地标的重要组成。建筑整体形态反映大唐遗风，以传统建筑层叠的群体形象为基本元素，运用现代技术诠释传统精神，协调城市风貌。建筑天际线呼应秦岭逶迤，轮廓线形成起伏跌宕、波澜壮阔的景象，犹如秦岭逶迤、延绵不绝，使音乐厅不仅具有人文气质，更有山水情怀。建筑气质最终归于音律，体量形态适应大小厅堂布局要求，阵列排布的立面构件所形成光影效果，体现节奏和韵律。沿街立面犹如徐徐拉开的帷幕，演绎城市的华彩乐章。□

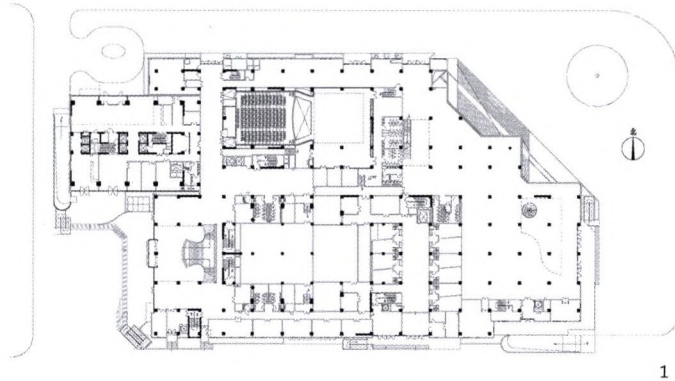
### 项目信息/Credits and Data

设计团队/Design Team: 李莉, 王力, 刘月超/LI Li, WANG

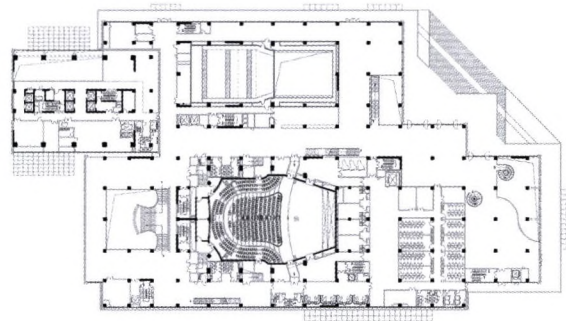
Li, LIU Yuechao

建筑面积/Floor Area: 68,000m<sup>2</sup>

竣工时间/Completion Time: 2016.01



1



2



3



4



5

1 首层平面/Ground floor plan

2 二层平面/First floor plan

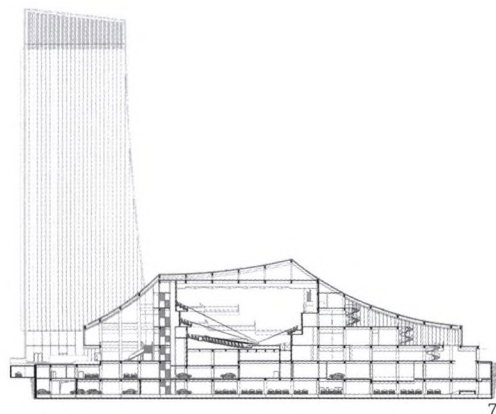
3 外景/Exterior view

4.5 内景/Interior views





6



7

6 外景/Exterior view  
7 剖面/Section

The performance centre and academic exchange centre of Xi'an Conservatory of Music are located in the northeast corner of the campus with a construction area of 68,000 square metres, including a 1000-seat Symphony hall, a 266-seat singing and dancing rehearsal hall and two 186-seat small rehearsal halls. The project is located at an important urban node at the intersection of Chang'an Road and South 2nd Ring Road in Xi'an. The overall design of the concert hall is integrated into the urban landscape and becomes an important part of the urban landmark. The overall form of the building reflects the legacy of the Tang Dynasty. It takes the group image of traditional buildings as the basic element and

uses modern technology to interpret the traditional spirit and coordinate the city style. The skyline of the building echoes the rolling of the Qinling Mountains. Its outline forms a magnificent undulating scenes, like rolling and continuous Qinling Mountains. It makes the concert hall not only have the humanistic temperament, but also the feeling of mountains and rivers. The architectural temperament is ultimately attributed to the rhythm. The volume form meets the layout requirements of large and small halls. The light and shadow effect formed by the facade components arranged in arrays reflects the rhythm and rhythm. The elevation along the street is like a curtain drawn slowly, playing the colourful movement of the city.□