

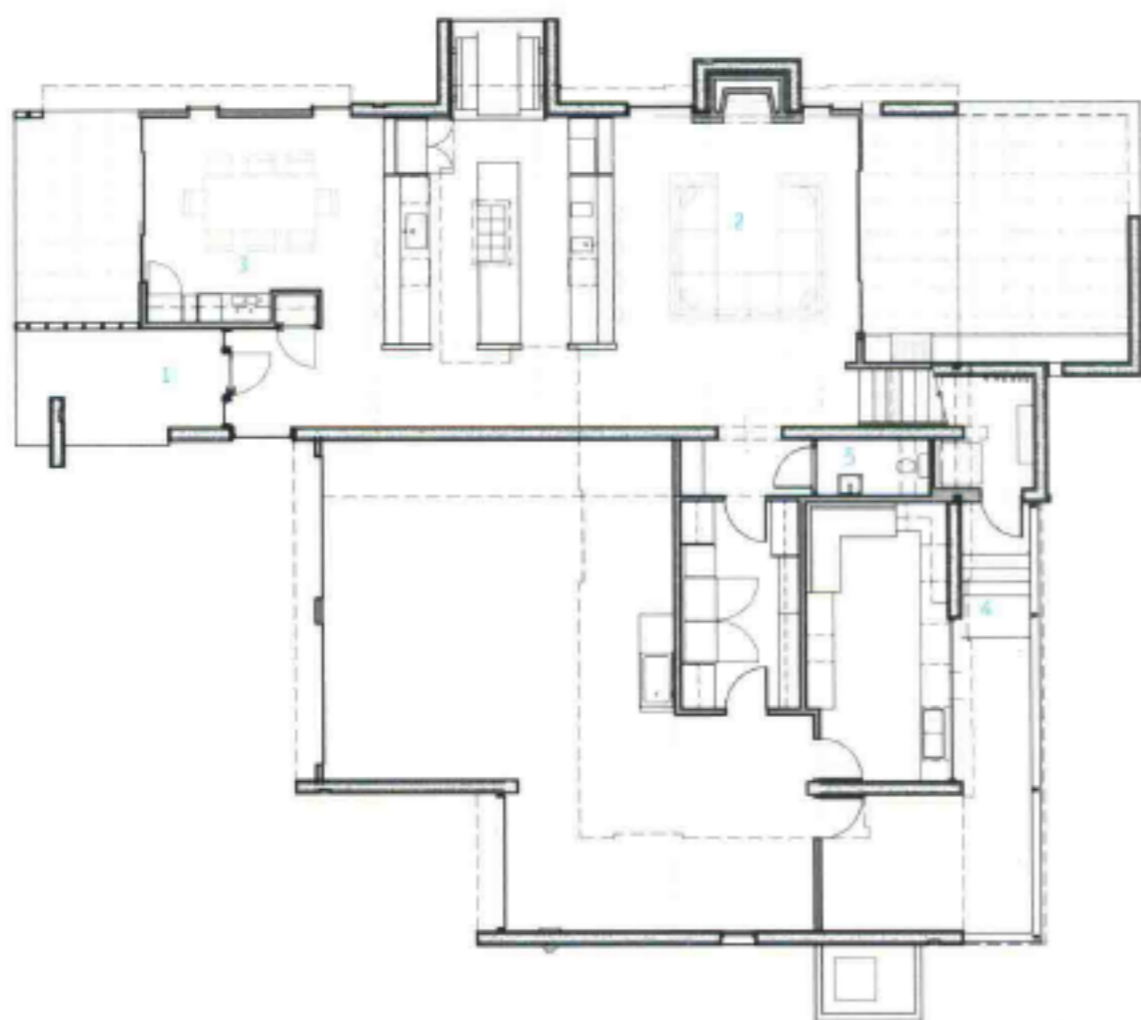


Building in the evening 夕照中的建筑

Strauchaus

This home rests on the edge of a wooded area. The diagramming process analysed the programme and needs of the two owners in effort to resolve a cohesive experiential sequencing of spaces, suggest massing arrangements and uncover elevation compositions. The abstraction of the programme is made in effort to make the two paths: the movement, and the connections become an extension of the landscape.

As the building takes form, the graphic maps and modeled paths begin to prescribe how the structure relates to the surrounding context. A patterning of thin floor-to-ceiling windows connects the structure to the neighbouring forestry by continuing the event of a body passing through the forest.

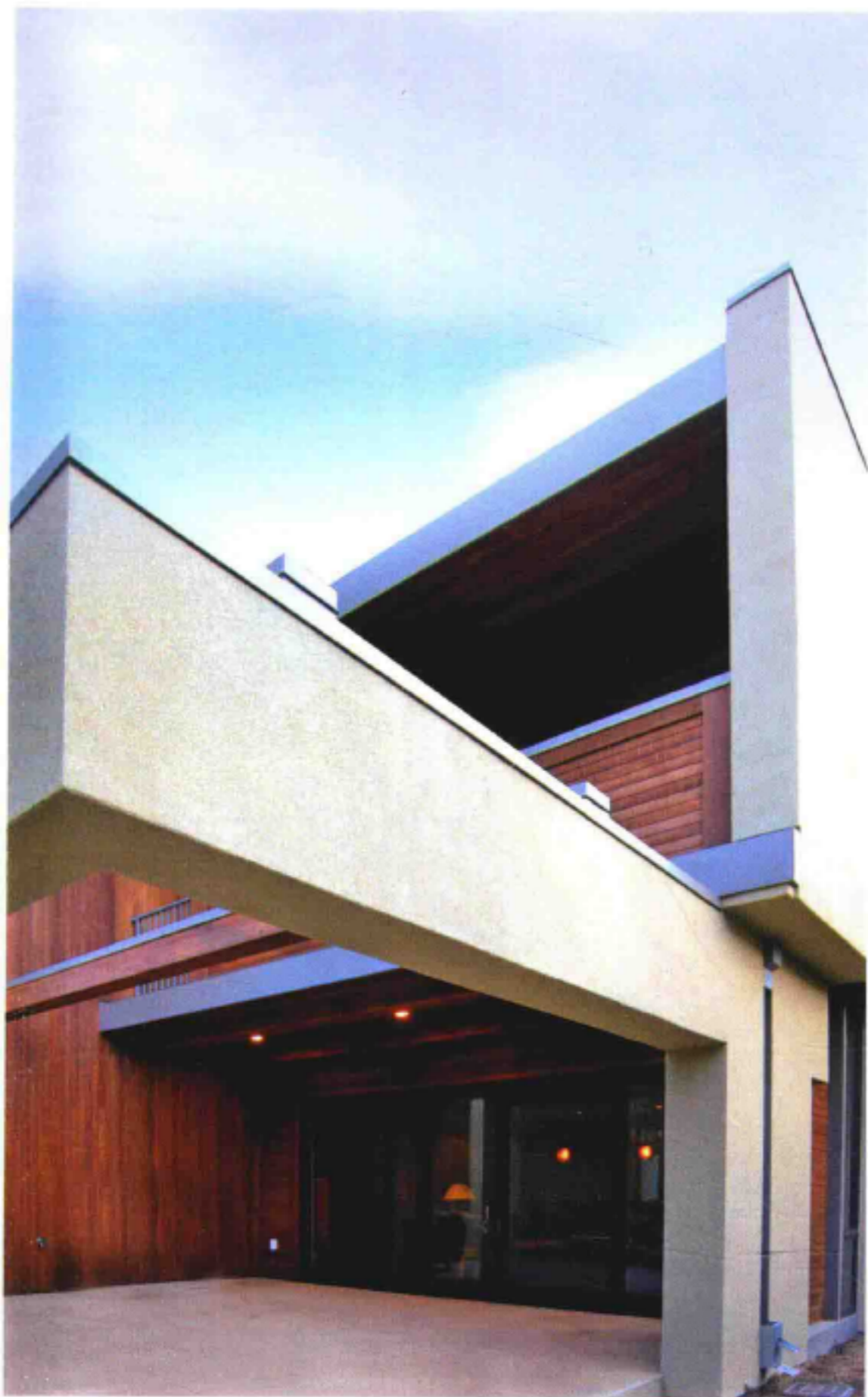


Strauchaus住宅

住宅坐落在一处树林的边缘。建筑师在设计阶段综合考虑了项目和两位户主的需求，确定了空间的排列、模块的构建以及里面的组合。项目规划被抽象成两个方面：移动路径和与外部景观相连接的路径。

图纸和既定路径在建筑建造过程中预先描绘了建筑与景观的联系。细长的落地窗模仿了树林里树木的造型，在结构上将建筑和周边的林地联系了起来。

1. 入口
 2. 客厅
 3. 厨房
 4. 楼梯
 5. 浴室
1. entrance
 2. living room
 3. kitchen
 4. stairs
 5. bath



傍晚的平臺 Patio in the evening



走廊 Hallway



傍晚，建筑正立面 Front side in the evening

Photo: Peter Jahnke

Residential

Completion Date: 2008

Architect: PIQUE llc.