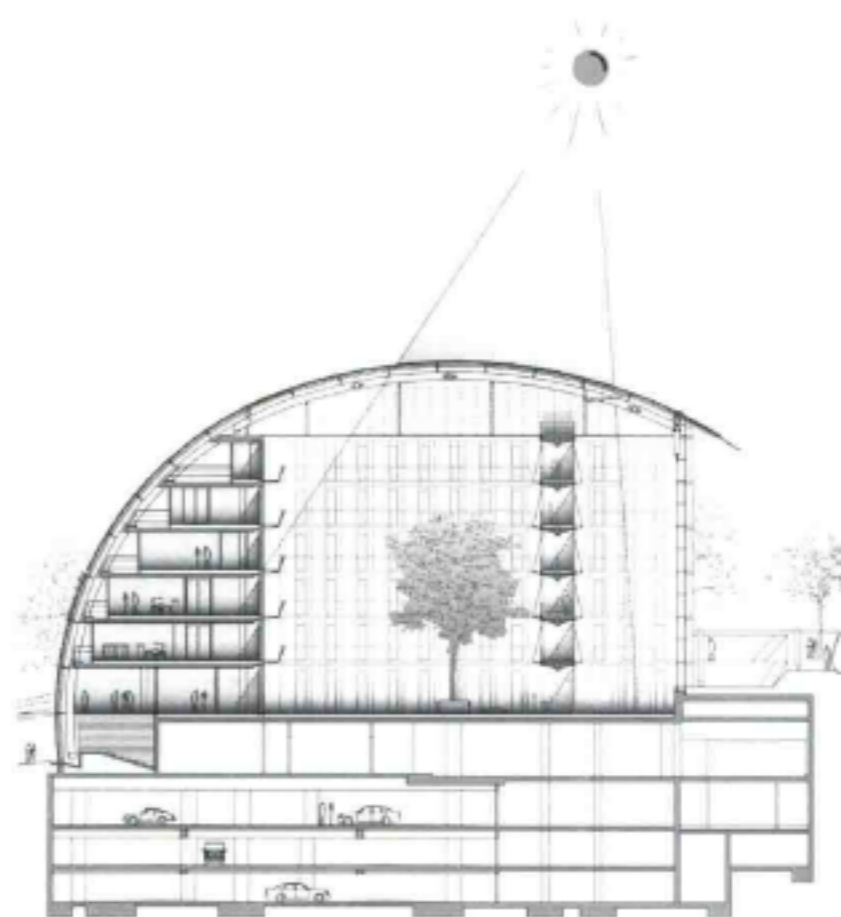


## European Investment Bank

The new headquarters building for the European Investment Bank (EIB), with its compelling 13,000-square-metre glass roof, extends Sir Denys Lasdun's existing buildings on Luxembourg's Kirchberg plateau. It provides 72,500 square metres of office space and other facilities for up to 750 employees.

The striking tubular glass roof spans the entire, 170-metre-long and 50-metre-wide structure. In combination with an extremely lightweight glass and steel superstructure, it offers a maximum of daylight and transparency. In addition, the building's zigzag plan encourages a non-hierarchical office layout that promotes interaction and communication. This unrivalled office environment is carried by an environmental programme that reflects a progressive approach towards sustainability in architecture.

Key to the new headquarters' ecological concept is the glass roof which curves around the floor plates to create the atriums in the V-shaped "gaps" of the building wings. The landscaped winter gardens on the valley side are unheated and act as climate buffers. In contrast, the atriums on the boulevard side serve as circulation spaces; hence temperatures have to be kept at a comfortable level. Both winter gardens and "warm" atriums are naturally ventilated through openable flaps in the shell to draw fresh air into the building and to reduce heat gain especially in the summer months.



## 欧洲投资银行

欧洲投资银行新总部大楼13,000平方米的玻璃屋顶十分引人注目，将丹尼斯·兰斯顿先生所建造的建筑扩展到了卢森堡的教堂山高原上。新总部大楼为750余名员工提供了72,500平方米的办公空间和相关设施。

造型独特的管状玻璃屋顶跨越了长170米，宽50米的建筑物。屋顶的轻质玻璃和钢铁结构为建筑提供了充足的自然采光和通透性。此外，建筑内部的Z字形布局是办公室之间没有分级，促进了员工之间的互动和交流。这个无以伦比的办公环境在设计过程中运用了一系列的可持续和环保设计策略。

建筑生态设计的关键在于环绕玻璃屋顶，它包裹着整片楼板，在建筑两翼的V形空挡处形成了中庭。山谷一侧的景观冬日花园并没有空调设施，可以作为一个气候缓冲带。相反，临街一侧的中庭作为流通中转空间，一直保持着适宜的温度。冬日花园和温暖的中庭都通过建筑外壳的可控式风门实现了自然通风，保证了建筑内部的新鲜空气，降低了夏天的热吸收。

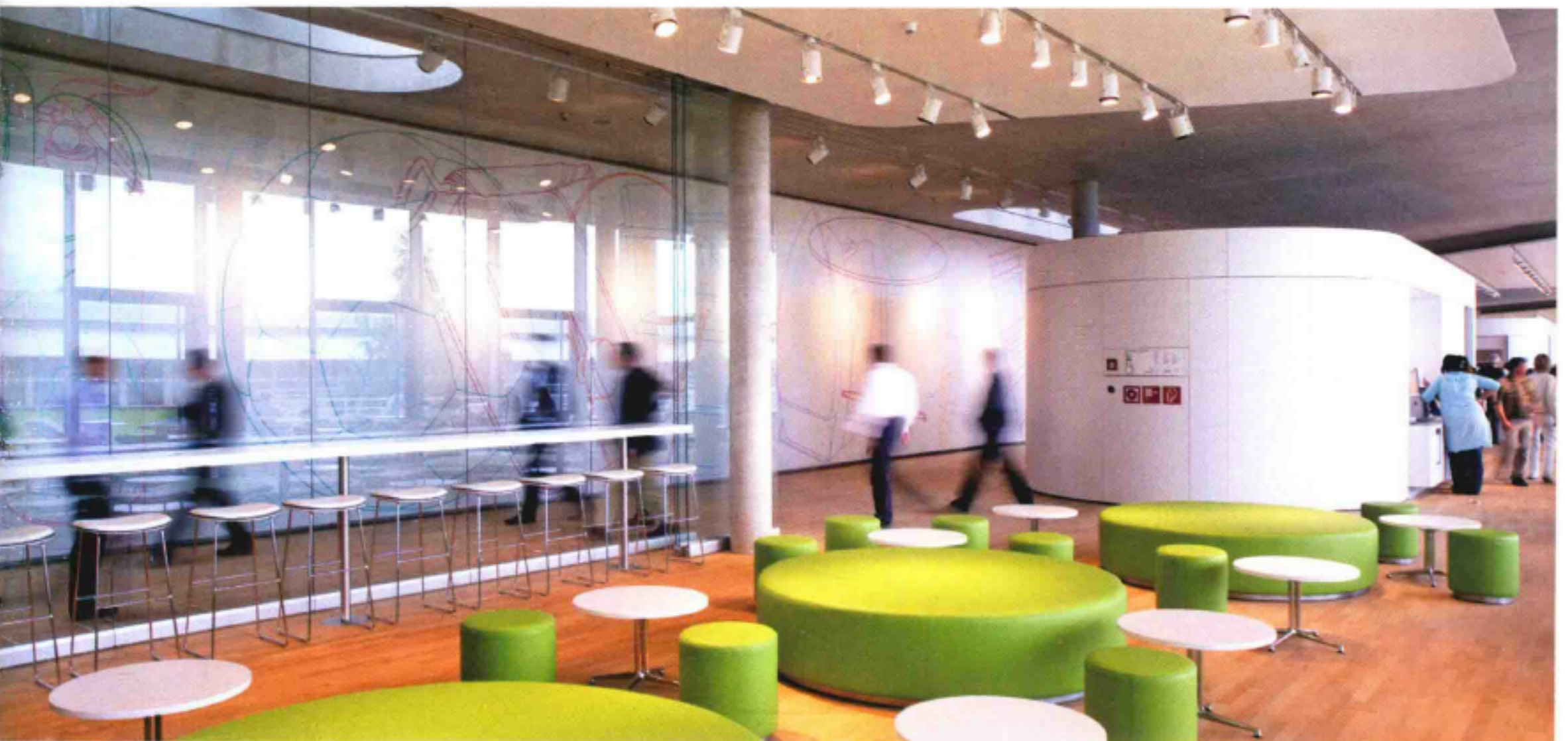


Photo: Ingenhoven Architects

Completion Date: 2008

Architect: Ingenhoven Architects

Corporate