



Side façade 建筑侧面

The Central Library of the University of Molise

The scheme of the Library and the main lecture Theatre of the University of Molise includes the design of external spaces with a sheltered pedestrian path and new parking areas. The main hall has two entrance spaces, one from the public open connection system of the University and the other directly from the Faculty of Social Sciences and has been designed for 480 seats and is used by the whole university.

The scheme is grafted onto the morphology of the site with two main blocks, the first being used for the offices and the second for the library, connected by two service and security stairs.

Architectural unity, in relation to the existing buildings, is granted by typological features and the use of materials like bricks and iron windows, yet used for the main buildings.

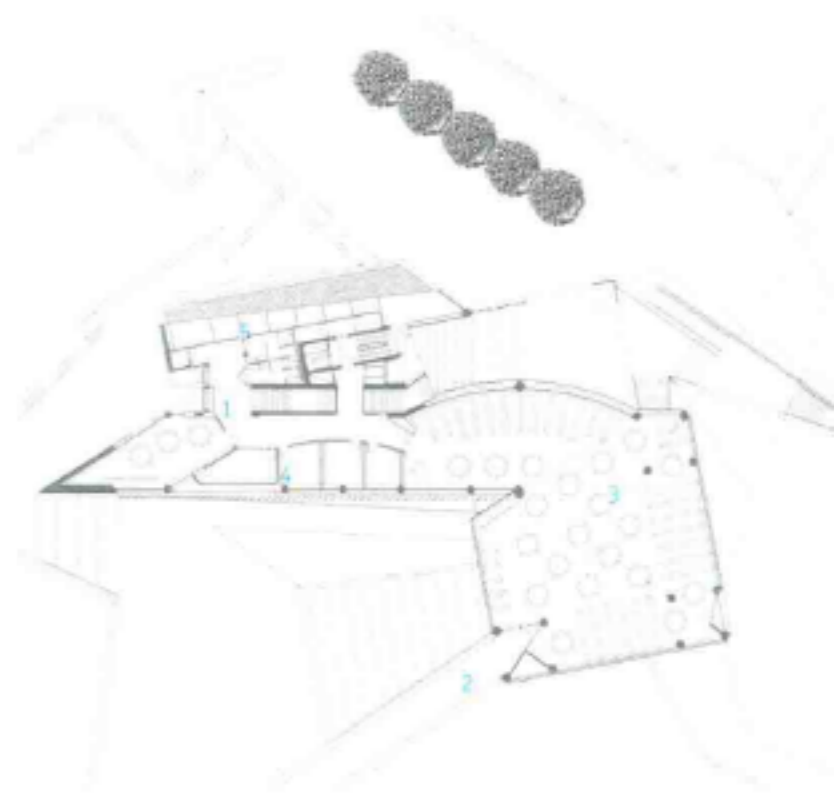
The block is connected to the University complex and to the parking area through a grid of pedestrian paths and a future pedestrian bridge that overcomes the main street in the University area.

莫利塞大学中心图书馆

莫利塞大学图书馆和主阶梯教室的设计还包括了户外人行道和新停车场的建设。主大厅有两个入口，一个通往学校的公共区域，另一个通往社会科学楼，里面共有480个坐席，可供全校使用。

建筑由两个主体部分组成，一部分里面是办公室，另一个里面是图书馆，二者由安全服务楼梯相连。

为了与校园内原有的建筑类型相一致，图书馆主楼的建设采用了红砖和铁窗结构。建筑与校园内的其他教学楼和停车场通过人行道相连，即将建造的人行天桥将覆盖校园里的主要街道。



1. entrance stairs
2. entrance path
3. reading hall
4. study and research
5. administration

1. 入口楼梯
2. 入口通道
3. 阅读大厅
4. 学习和研究室
5. 行政办公室



主入口 The main entrance



建筑主外墙 The main façade



室内空间 The inner space

Photo: Pica Ciamarra Associati

Educational

Completion Date: 2009

Architect: Pica Ciamarra Associati