

Building rooftop 建筑屋顶

Sloschek

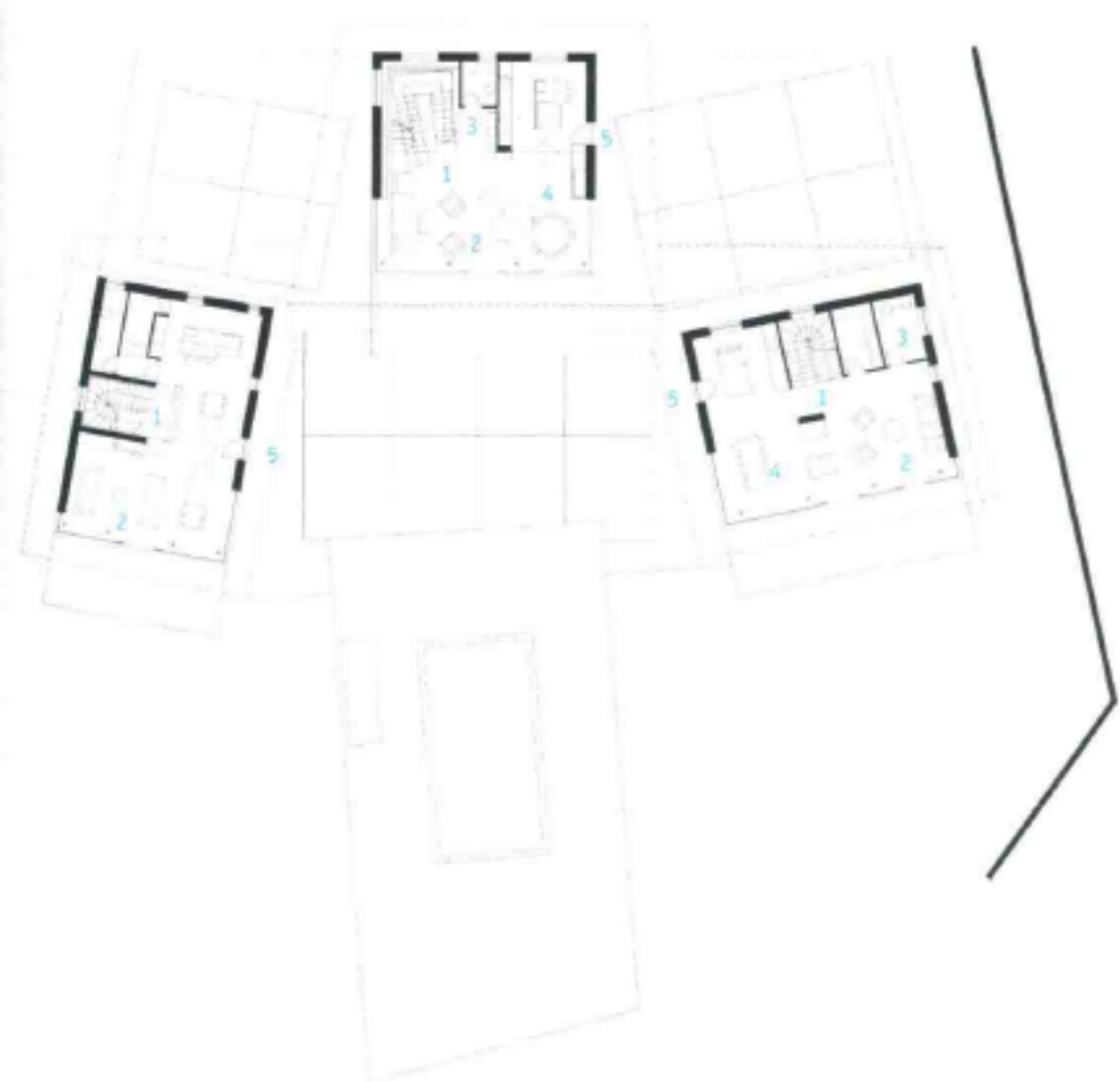
The image of the concept is characterised by the landscape: three differently positioned cubes, connected by a levitating, protecting roof, are giving birth to an interplay of openings, insights and views and interspaces. Great stress is put on a good view of the steeples, the orchards in the valley and the mountain scenery. An excellent view towards the village, the vicinity and vice versa arises as a result of the spaces between the bodies and the roof. A "centre" emerges, a central location which opens itself towards the countryside and communicates with it. Different sizes of windows arise depending on the direction of view, which are defining the façade design.

Sloschek 别墅

项目的设计特点主要体现在它的外形上：三个以不同方位摆放在一起的独立立方体结构由一个悬浮的屋顶联系起来，形成了一个从门窗、视野到内部环境都相互影响的整体。从别墅可以欣赏到尖塔、山谷中的果园和山脉三个方向风景。别墅主体和屋顶之间的空间使得别墅具有极佳的视野。别墅中央出现了一片空地，使别墅和乡村风景紧密结合在一起。大小不一的窗户的位置和外墙设计都由外面的风景决定。



Interior lounge 室内休息区



- 1. stairs
- 2. relaxing area
- 3. bathroom
- 4. dining table
- 5. entrance

- 1. 楼梯
- 2. 休息区
- 3. 浴室
- 4. 餐厅
- 5. 入口



建筑侧面 Side view of the exterior



屋顶连接处 Rooftop connection

Photo: Günter Richard Wett

Residential

Completion Date: 2007

Architect: bergmeisterwolf Architekten