



Exterior view 建筑外观

Kerry Plaza, Futian, Shenzhen

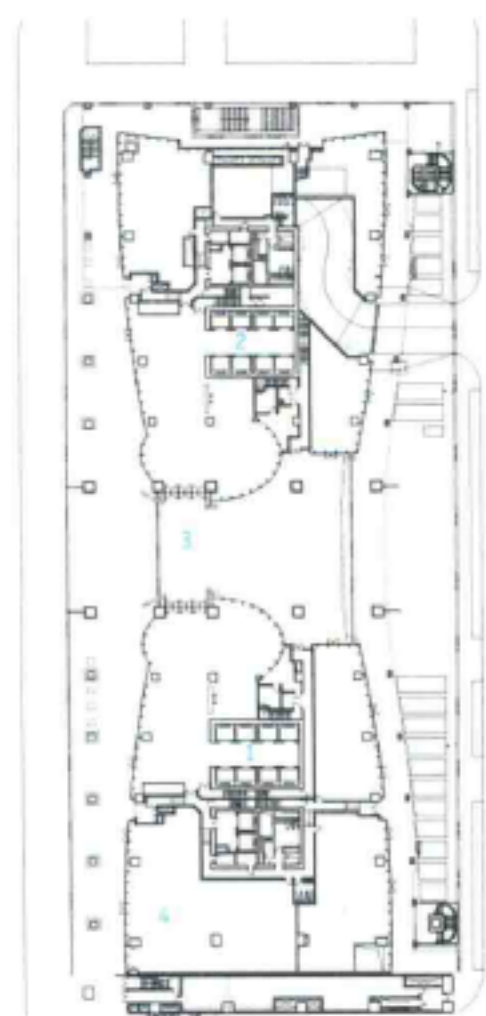
Located on the southern part of the Futian CBD between the Exhibition Centre and Civic Centre, this comprehensive development houses a six-star flagship Shangri-la Hotel complex and the Futian Kerry Plaza.

The Futian Kerry Plaza calls for a pair of connected towers. The two 23-storey office towers soar up to 99.8 metres high. Symmetry is forgone for a more tectonic interplay between two rectangles. The two towers are connected on grade with a podium containing the hotel lobby and retail facilities. The entrance is framed with an iconic portal and matching canopy in the form of sweeping curves.

嘉里建设广场

嘉里建设广场选址在深圳福田区商业中心南部，介于展览中心和市政中心之间，整体开发工程包括六星级香格里拉酒店大楼及嘉里广场写字间。

嘉里广场写字间由两幢相连通的塔楼结构组成，共为23层，高达99.8米。设计摒弃了对称性原则，特别强调两个长方形结构之间的相互作用。塔楼之间通过基座连通，这里包括酒店大堂及零售店。入口突出曲线结构，带有顶篷，大气十足。



1. office areas
2. office areas
3. central passage way
4. activity space

1. 办公区
2. 办公区
3. 中心走廊
4. 活动空间



建筑外观 Exterior view



建筑外观 Exterior view



入口通道 Entrance way

Photo: Daniel Wong (IMAGE 28)

Complex

Completion Date: 2007

Architect: Wong & Tung International Ltd.