



External 建筑外观

Hi-tech Systems Headquarters

The new directional building has been designed to abstract itself from the common building scheme, rejecting analogies and mimesis, while intended to assume technology and innovation as its essence.

The traditional building techniques make room to the use of innovative materials or the different exploitation of the old ones, and, at the same time, to the overcoming of conventional building schemes. Through the opposition between the sculptural concrete shapes and the lightness of the glass and steel structures, the designers have chosen to characterise the internal and external space, pointing out a clear and essential architectural language.

The façade is mainly conceived to go between the aesthetic and conceptual definition of the architecture. Built totally in steel and structural glass and closed among big concrete walls the front is both like an optical and material screen of the building, both its external projection; the aim is to symbolise the Company's talent to be always in search of innovative and new solutions.

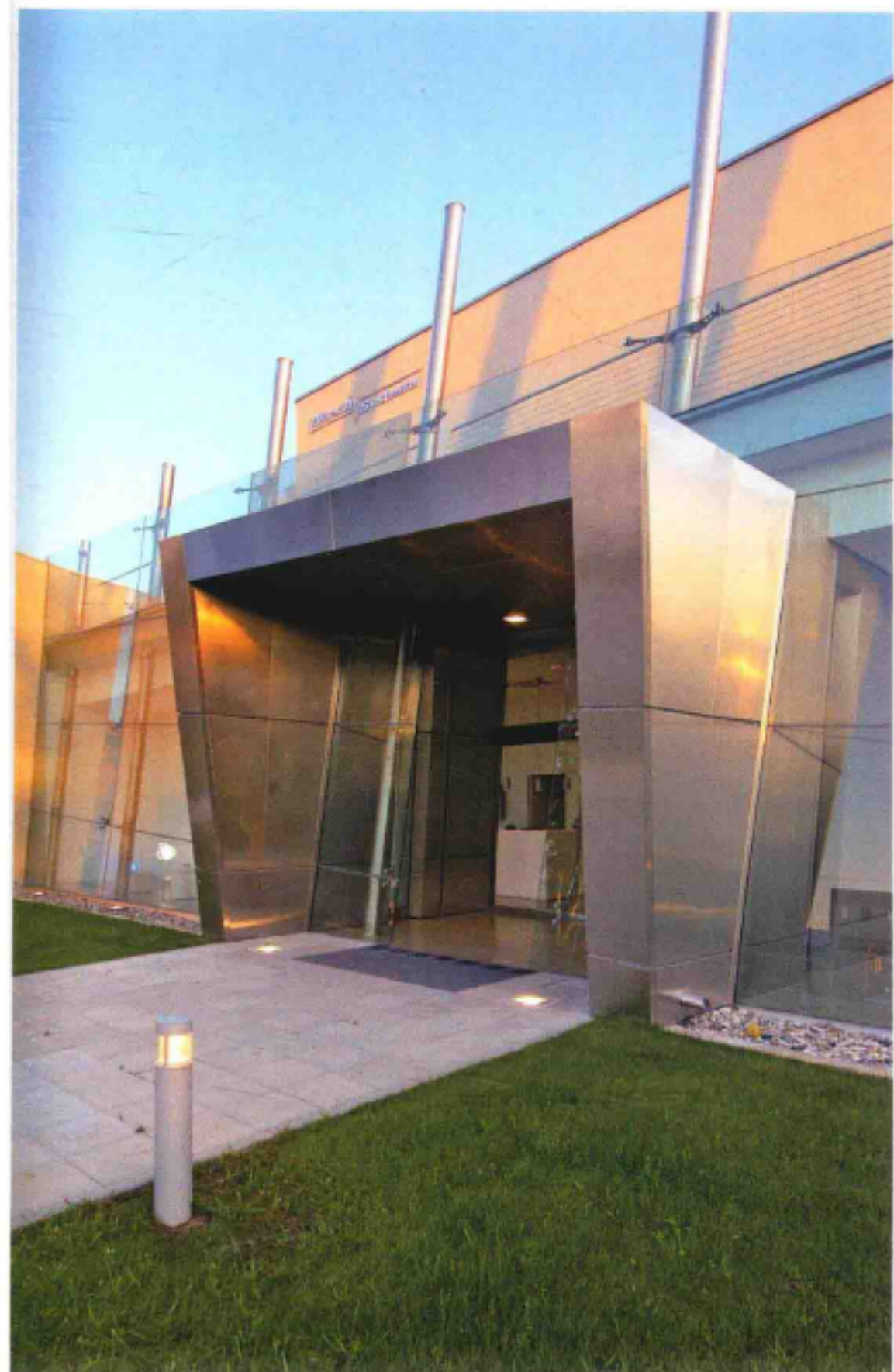
高新技术系统总部

高新技术系统总部新建建筑旨在从类似的结构中脱颖而出，摒弃模仿与相似，突出“技术”和“创新”的主题。传统建筑方式渐渐趋向于运用新材料或以现代方式诠释传统材质，从而打破古旧的建筑样式。设计师选择突出内外空间特色，彰显清晰、自然的建筑语言。

关于建筑外观的构思，他们寻求在美感和功能之间取得平衡。他们将两种对立的形式——水泥结构和玻璃钢筋外观融合在一起。大胆的设计手段进一步深化了主题。



Interior 建筑内部



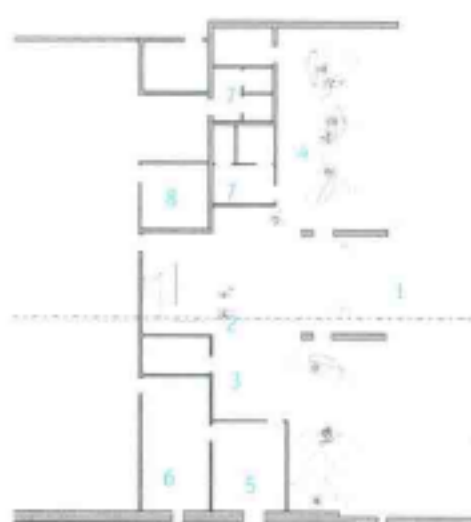
建筑外观 External



室内 Interior



室内 Interior



1. entrance
2. access to upper floor
3. reception
4. waiting room
5. purchase office
6. office
7. toilet
8. café
9. delivery access
10. production area
11. technical office

1. 入口
2. 二楼入口
3. 前台
4. 等候区
5. 采购办公室
6. 办公室
7. 洗手间
8. 咖啡厅
9. 配送入口
10. 生产区
11. 技术办公室

Photo: Enrico Muraro fotografo

Corporate

Completion Date: 2007

Architect: UAU Office