

Matzneller

Three buildings are integrated among themselves. The areas of contact are forming the terraces. Different materials meet in a harmony of colours. The dihedral of the bodies is creating a tunnel-like atmosphere towards the green interior courtyard.

The plaster emphasises the individual volumes: brownish and strongly structured beneath, the admixed copper vitriol (bluestone) creating a bluish colouring, an association to the vine that used to grow here. A wooden slatted frame is connecting the individual buildings as well as the inside and outside. The glassy cube, separated from the living area, is planned to be the library, the office and the guestroom all in one. Windows in the shape of a belt allow the daylight to penetrate the underlying sports room.

The main bodies are connected by a staircase, the central element of this residence. A slot arises, a gorge made of glass panels, in which the wooden stairs are slotted and which are connecting everything from the upstairs until the cellar. The staircase is leading upstairs in a decorative way, right between the frameless glass panels and the OBS-panels painted with white varnish.

麦特辛乐住宅

麦特辛乐住宅由三个单独建筑相互连结而成，连通区形成了露台。不同的材质通过色调变换融合在一起。

设计师选用不同色调的灰泥材质赋予建筑各自的特色。褐色的底部结构让人不禁联想到葡萄园。木板框架将不同的建筑部分连结起来。图书室、办公区及客卧全部置在一个“玻璃立方体”内，与客厅分离开来。光线过条带状的窗户投射进来，一直照射到地下健身区内。

中央楼梯将内部空间连通，木质台阶镶嵌在玻璃栏内，格外吸引眼球。



Exterior corridor 室外走廊



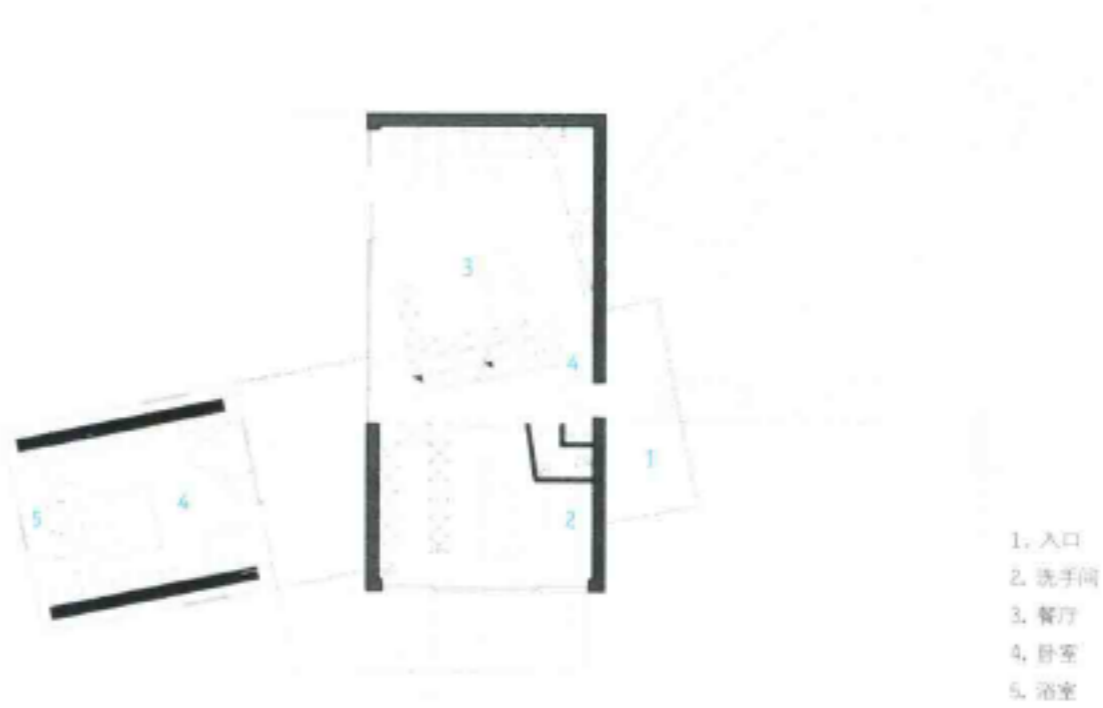
自然环境中的建筑 Building in the natural environment



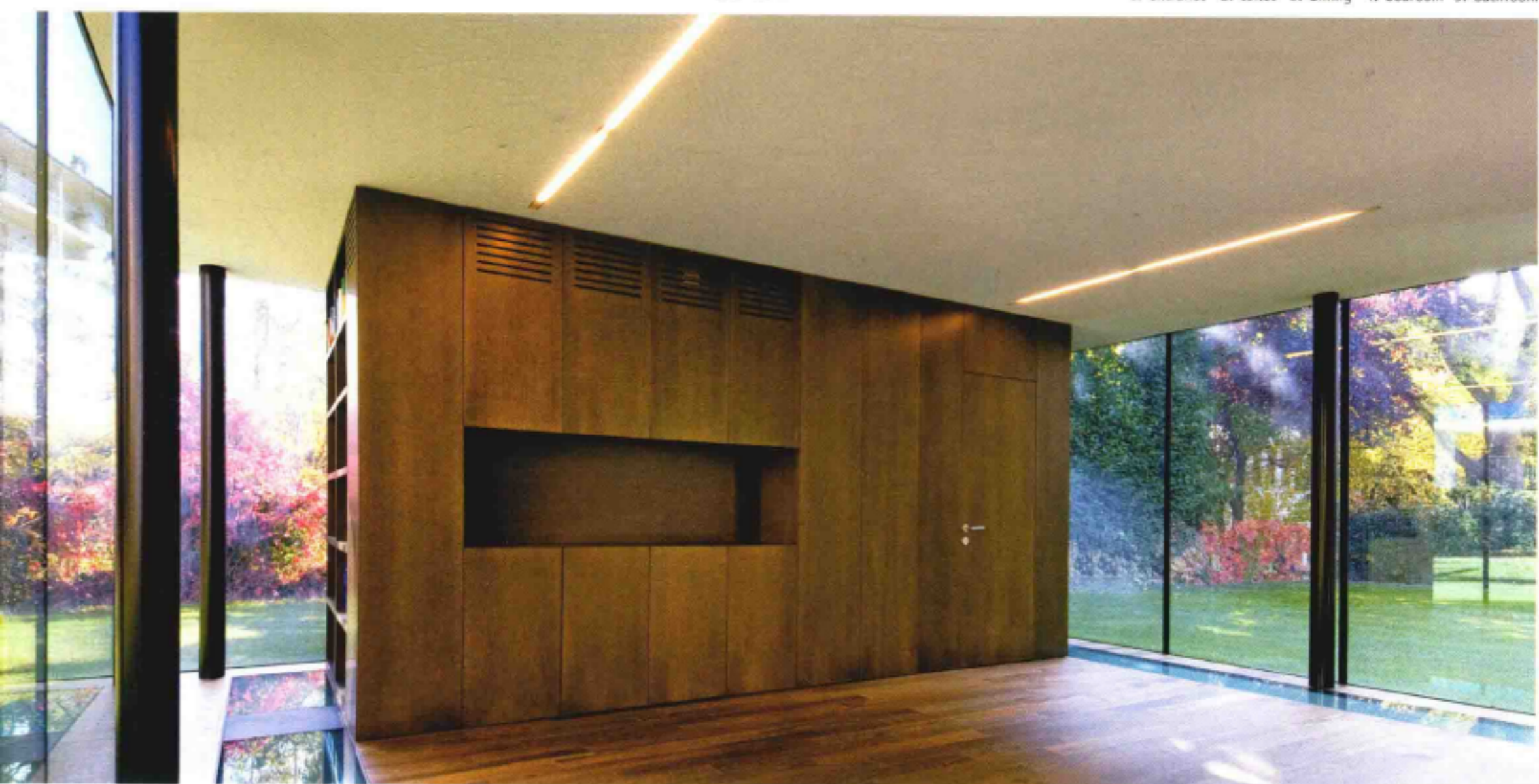
室内通道 Interior corridor



楼梯 Stair



1. entrance 2. toilet 3. dining 4. bedroom 5. bathroom



室内 Interior

Photo: Jürgen Eheim

Architect: bergmeisterwolf Architekten

Residential

Completion Date: 2008