

CCVH-Gignac

At the entrance to the city of Gignac, the stake consists in positioning on this place a urban complex, a village around a square. Every building has an independent access to the garden, is autonomous and has its own identity. The traffic of vehicles is channelled around the entity allowing the heart to become only pedestrian.

A particular care is brought to the set-up of buildings. The main constructions are facing north/south to facilitate the natural ventilation. This choice of set-up has two other objectives: shelter the central garden by protecting it from the North wind, and then maintain views on the tower of Gignac, the Pic Saint Baudille and the low valley of Hérault.

Only the building used for the Communauté de Communes is perpendicular, it marks the city entrance and the access to the site, it closes the internal garden. The medical pole and the pole of services face each other around the central garden. Their composition is symmetric, unitarian, modular and evolutionary. This allows to answer both the climatic comfort and the respect for the surrounding built heritage. Zinc, stone and concrete are the essential materials of this composition and make echo for the traditional materials of the place, both for the houses and for the agricultural structures.

基格纳CCVH小区

CCVH小区位于基格纳市边缘，是一座围绕广场而建的都市综合体。每一座建筑都有通往花园的独立入口，各具特色。小区内部禁止机动车通行，只允许行人通行。

设计师对建筑的布局进行了精心设计。主要建筑结构全部采用南北朝向，保证了自然通风。这种布局实现了两个目标：保护中心花园免受北风侵袭；不遮挡建筑周围的自然人文景观。

只有社区行政楼是竖直朝向的，它标志着区域的入口并将花园封闭起来。小区内建筑的构成对称而统一、循序渐进、具有模块结构。这一设计既保证了气候舒适，尊重了周边的已有建筑。锌板、石材和混凝土是建筑基本材料，与当地的传统住宅和农业建筑有异曲同工之妙。



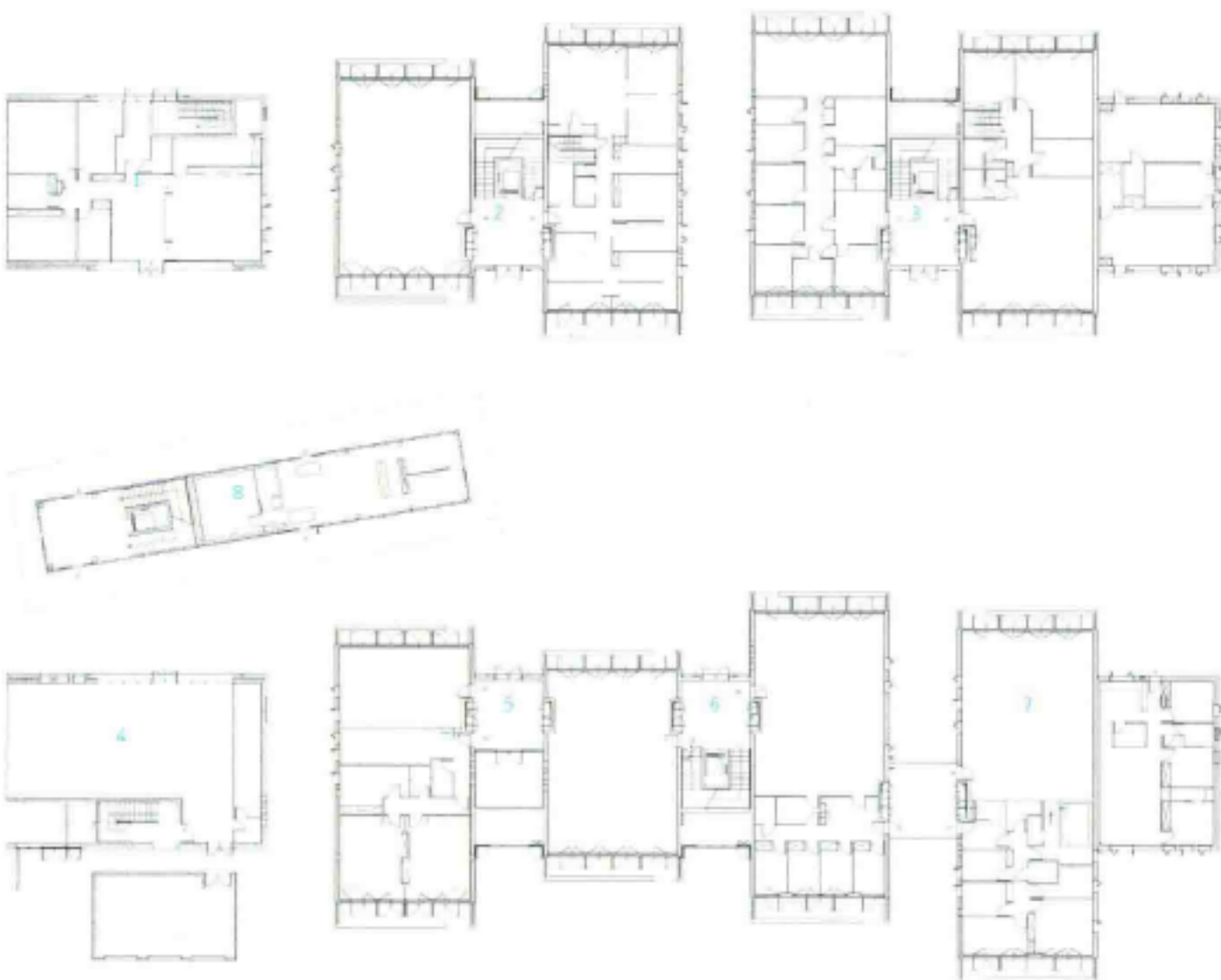
Central garden and community building 中心花园和社区楼



Community building 社区楼



社区楼 Community building



1-8. 社区楼
1-8. community building



夜景 Night view

Photo: Paul KOZLOWSKI

Architect: N+B Architects

Complex

Completion Date: 2009