

Features 项目亮点

A very contemporary style with classic image of twin towers and glass curtain wall facade, the complex contains residential & office buildings, shopping centers, hotels and a home appliances experience center.

本案涵盖了住宅、写字楼、购物中心、酒店以及家电体验中心等众多业态，采用双塔楼经典形象，外立面以玻璃幕墙为主，设计富有现代感。

Key Words 关键词

Urban Complex in CBD

CBD 型城市综合体

Wuxi Suning Square

无锡苏宁广场

Twin Towers 双塔楼

Glass 玻璃

Lighting 采光

Location: Wuxi, Jiangsu, China
Architects: RTKL

项目地点：中国江苏省无锡市
建筑设计：美国 RTKL 建筑事务所

» Overview

Suning Square is located in Wuxi's most bustling downtown Chongan District, between Zhongshan Road and Middle Renmin Road. This area is the hub of the entire Wuxi wealth. Integrating of living, shopping, business, leisure and entertainment. Wuxi Suning Square will become a place to cover five main functions (hotel-style service residence, international 5A grade office, high-end shopping center, the five-star Hyatt Hotel and appliances experience center).

» 项目概况

苏宁广场坐落于无锡市中心最繁华的崇安区核心商圈，位于中山路与人民中路交汇处，这片区域是整个无锡重要的财富中枢。无锡苏宁广场将居住、购物、商务、休闲、娱乐等功能整合，涵盖了酒店服务式豪宅、国际 5A 甲级写字楼、高端购物中心、五星凯悦酒店和未来家电体验中心五大业态。





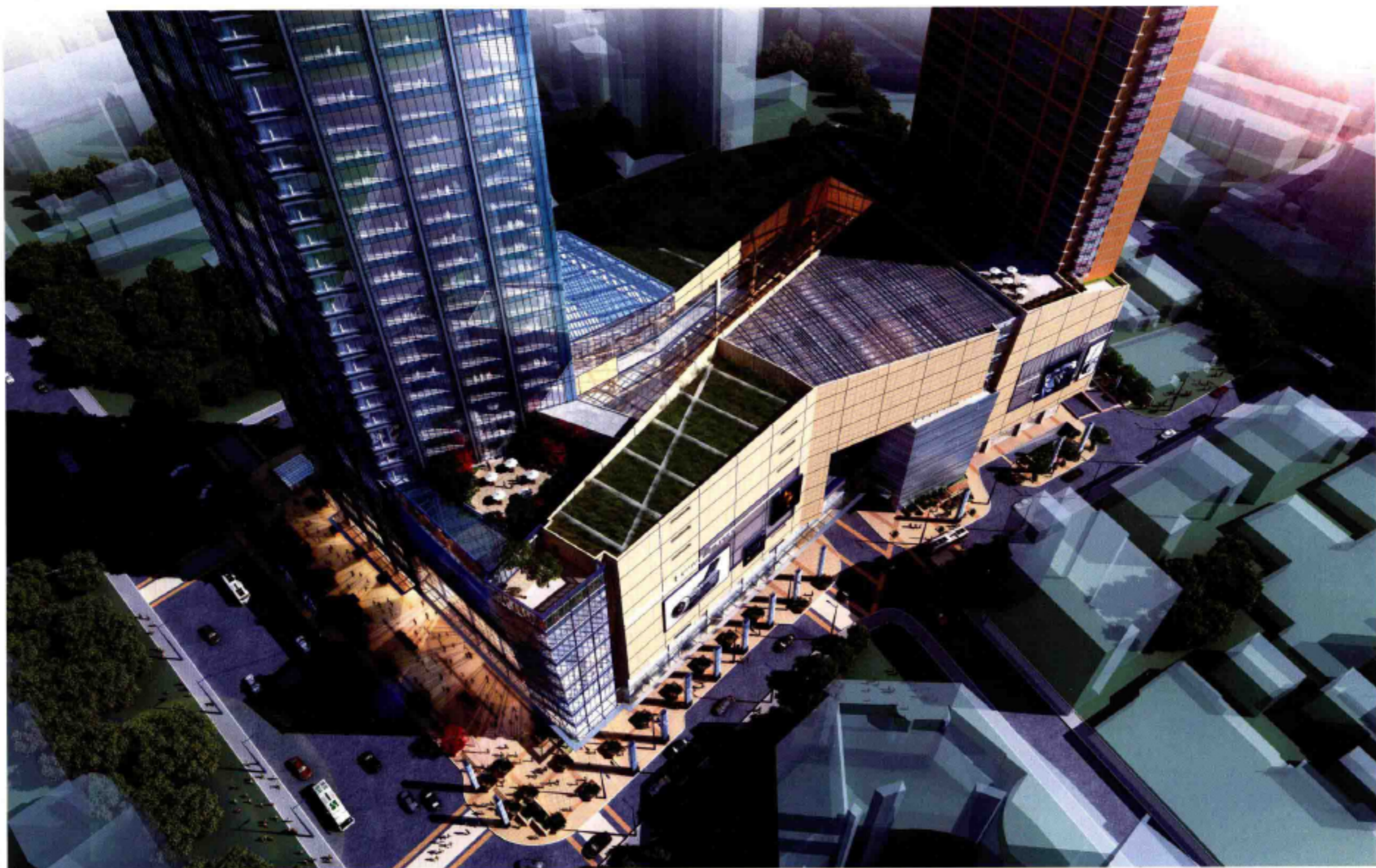
Site Plan 总平面图

» Design Description

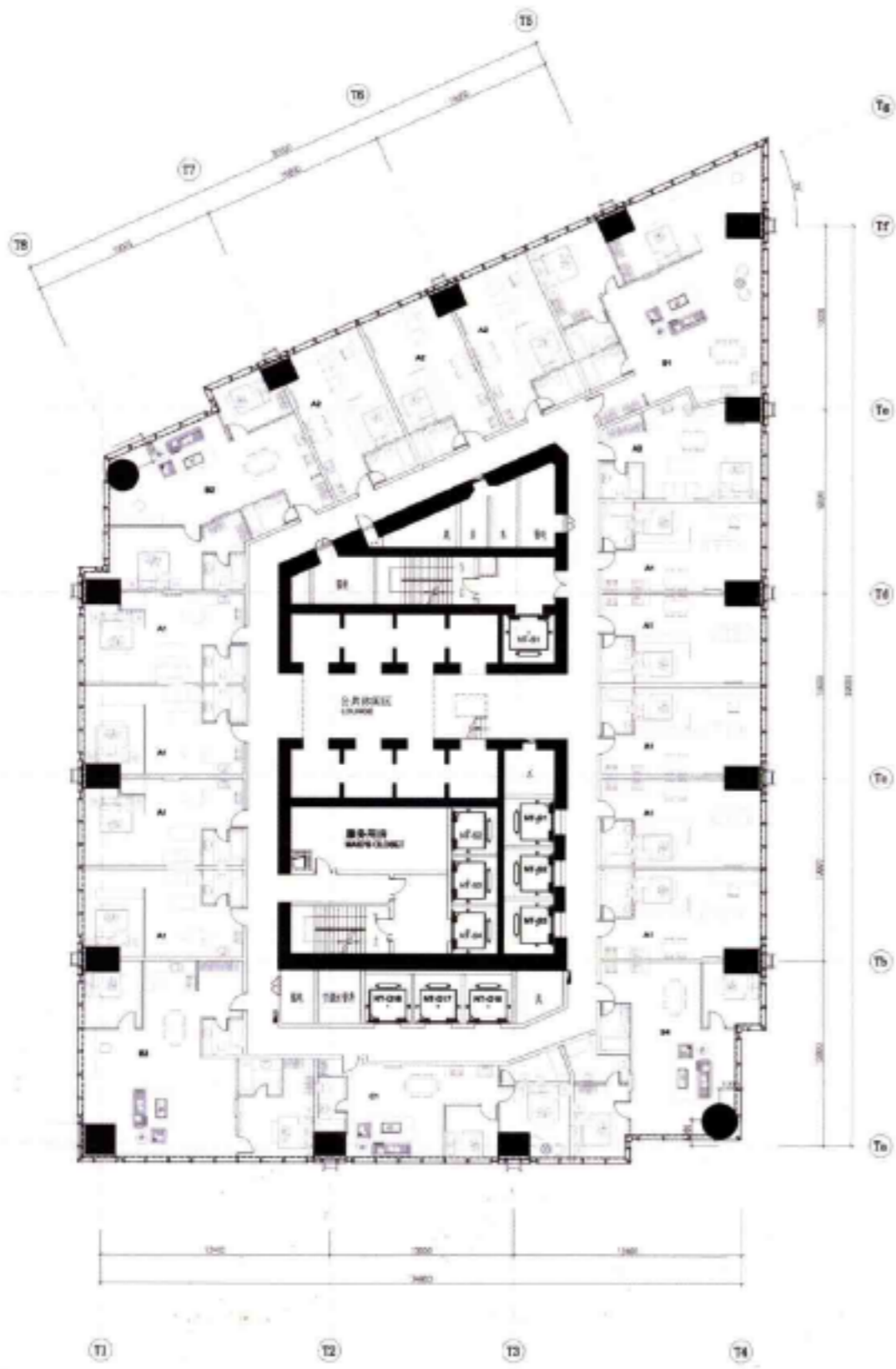
With the classic image of the ultra-high twin towers, the main structure is up to 328 m with its south tower 48 floors and 68 floors for the north. The total construction area is nearly 320,000 m², including shopping centers of 100,000 m², the five-star hotel of 52,000 m² with 356 rooms, international 5A Grade A office space of 25,400 m² and luxury apartments of 67,000 m².

» 设计说明

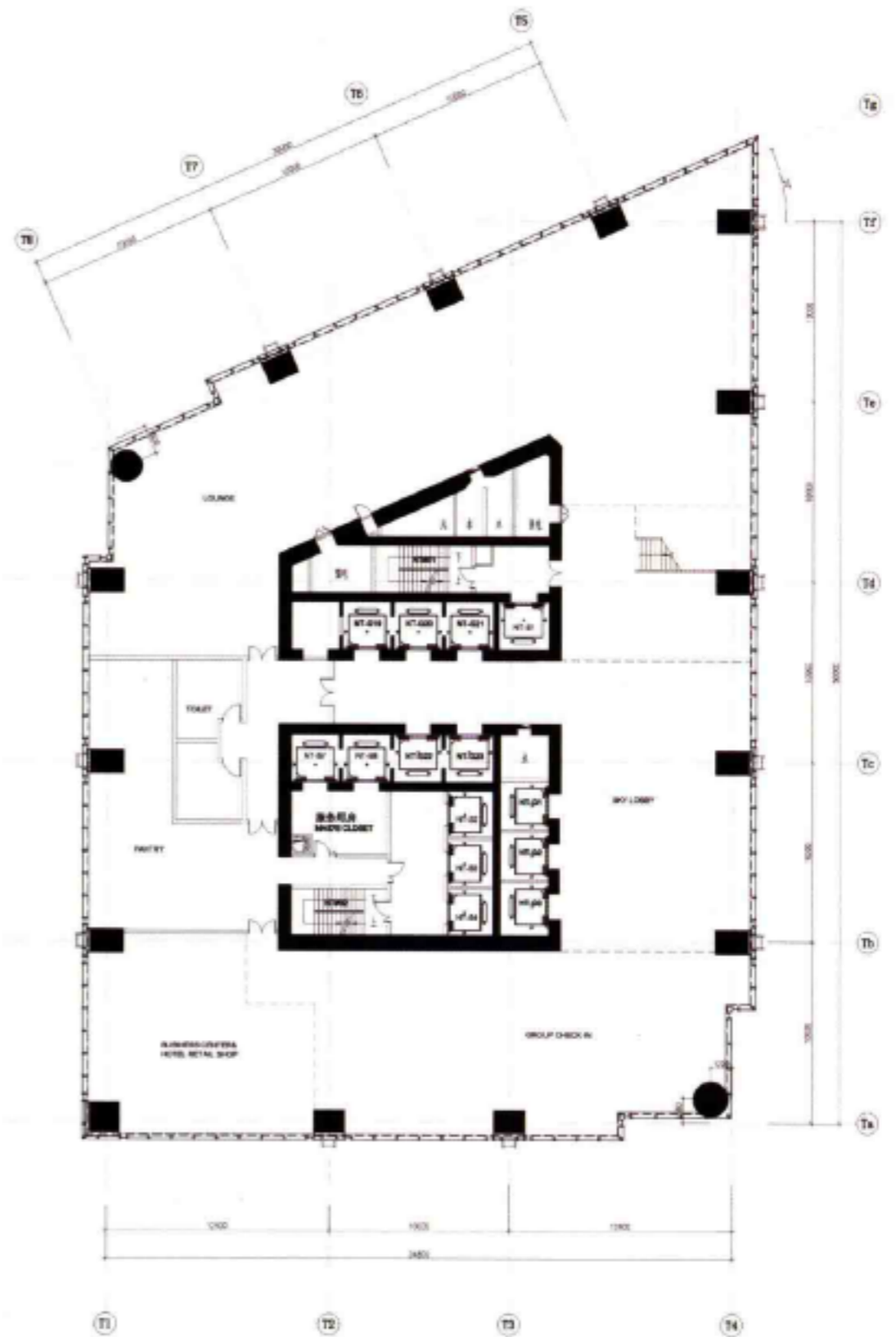
该项目为超高双塔楼的经典形象，主体结构高达328 m，南塔共48层，地上北塔共68层。总建筑面积近32万m²，其中购物中心总建筑面积10万m²，五星级酒店5.2万m²，包括356间客房，国际5A甲级写字楼2.54万m²，豪宅酒店式公寓6.7万m²。



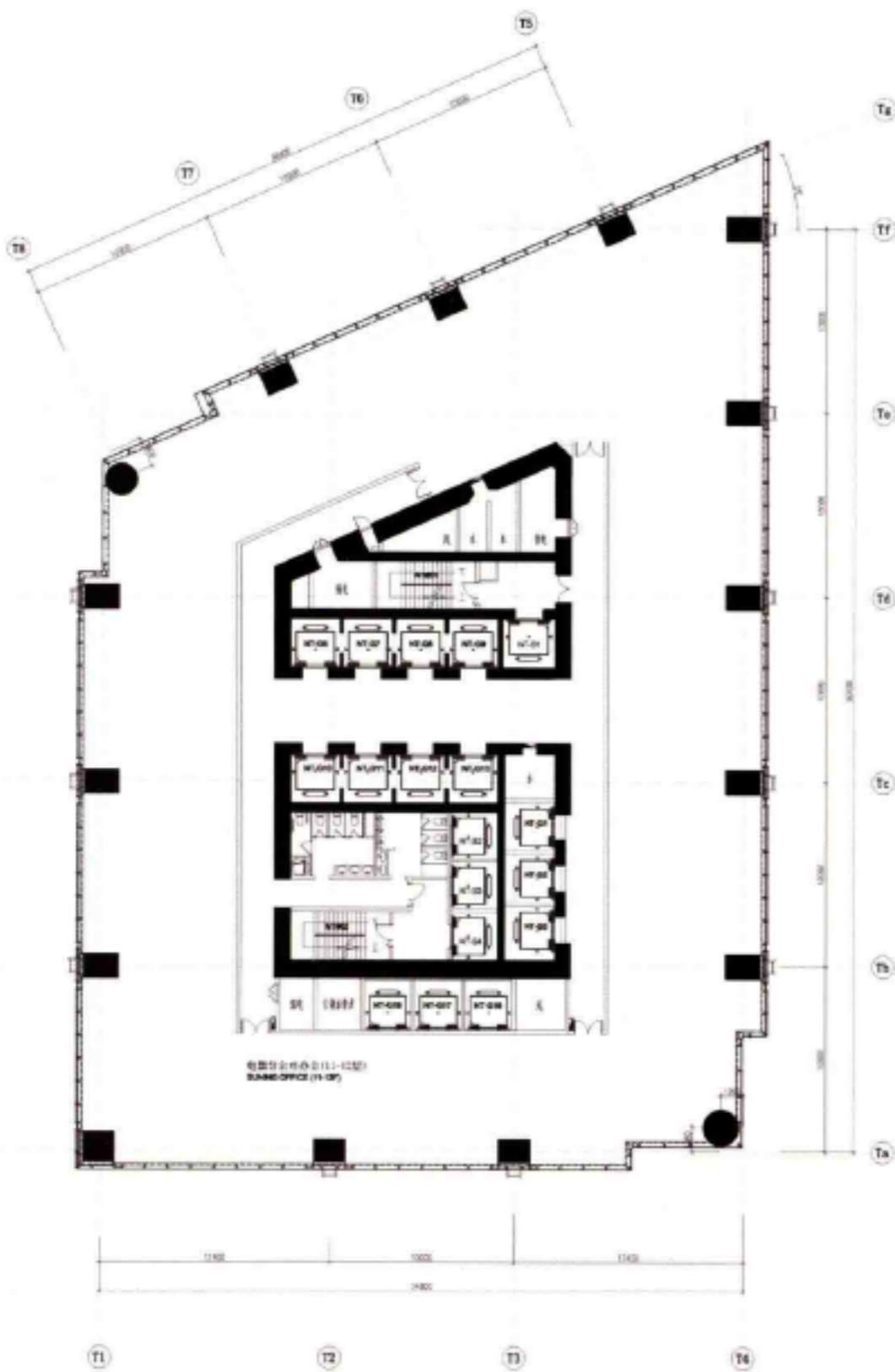




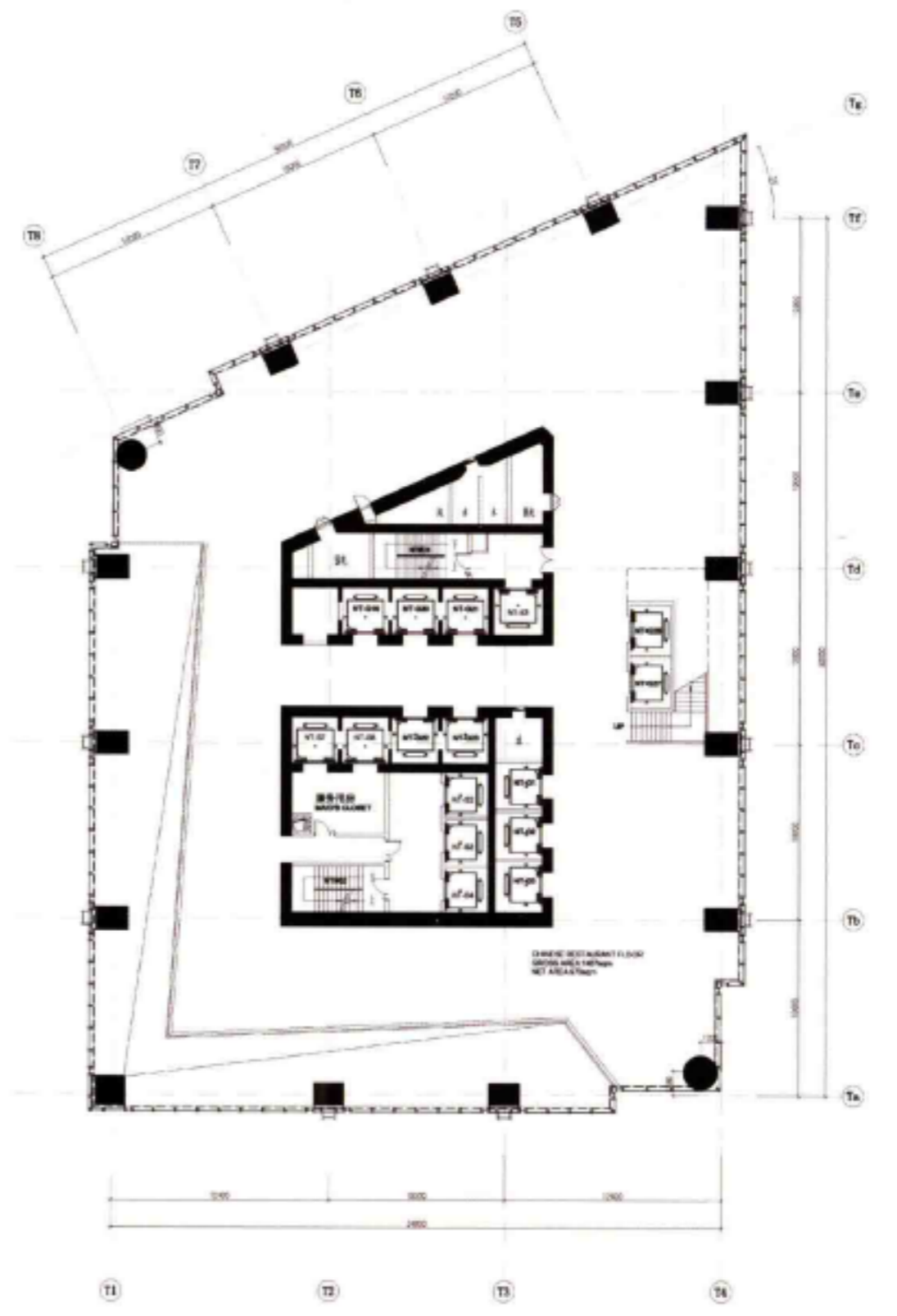
Floor Plan 1 平面图 1



Floor Plan 2 平面图 2



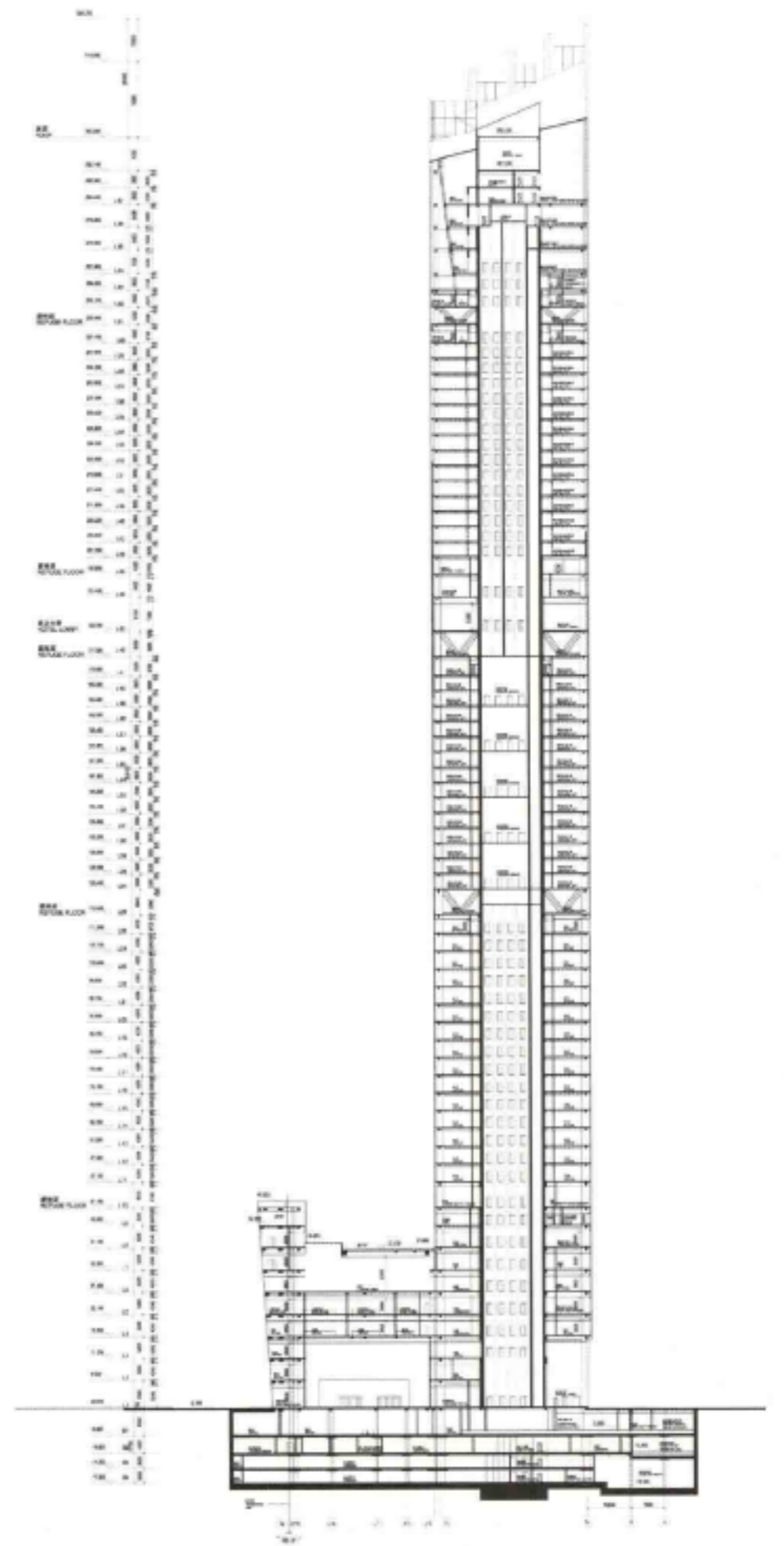
Floor Plan 3 平面图 3



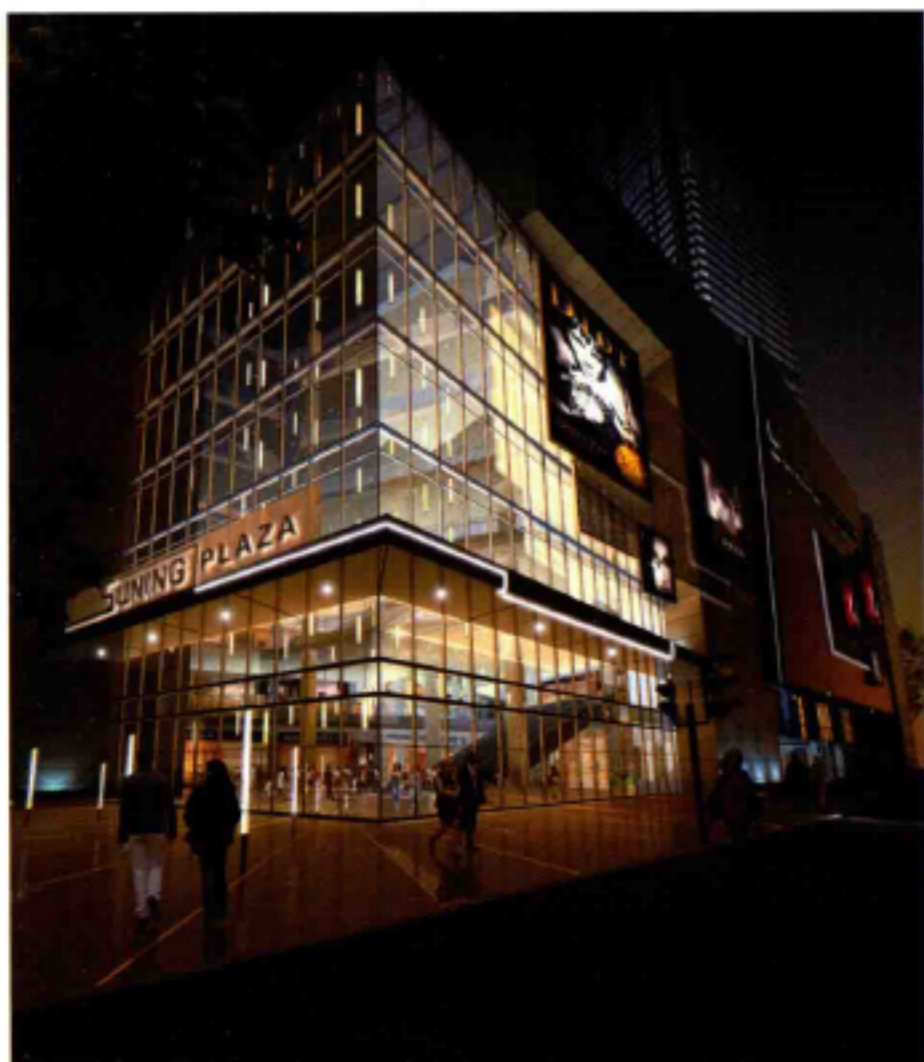
Floor Plan 4 平面图 4

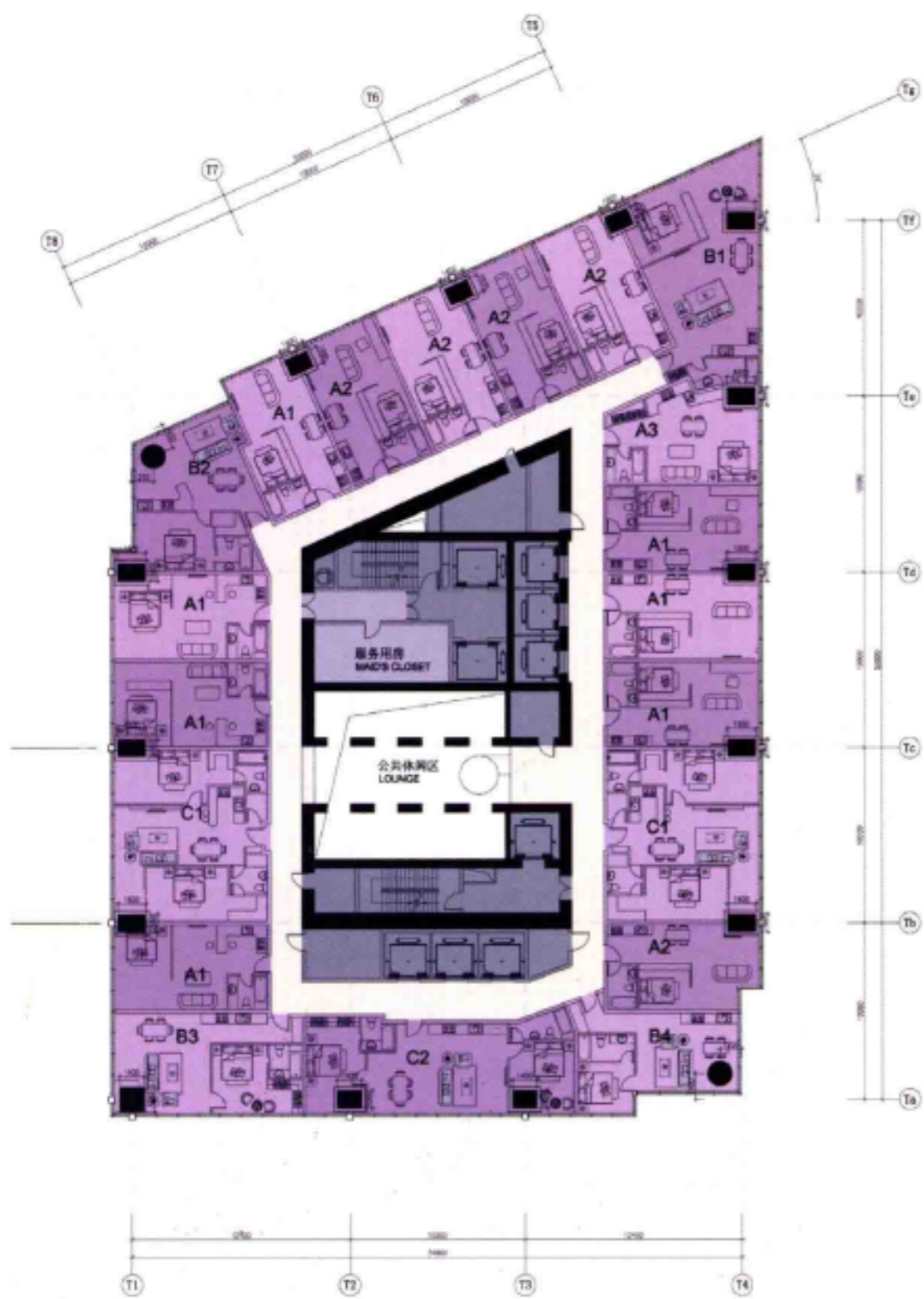


Section A-A A-A 剖面图

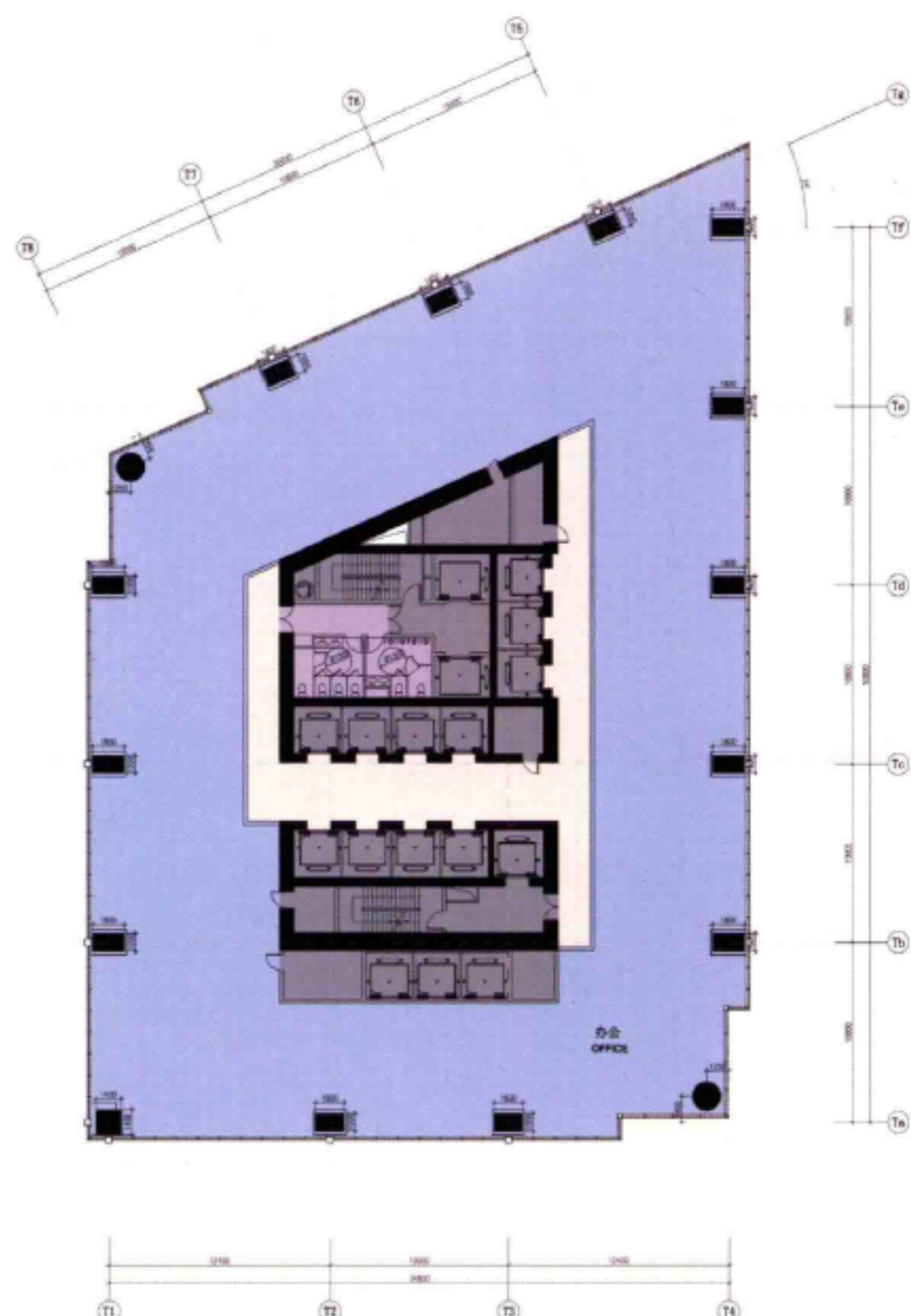


Section D-D D-D 剖面图





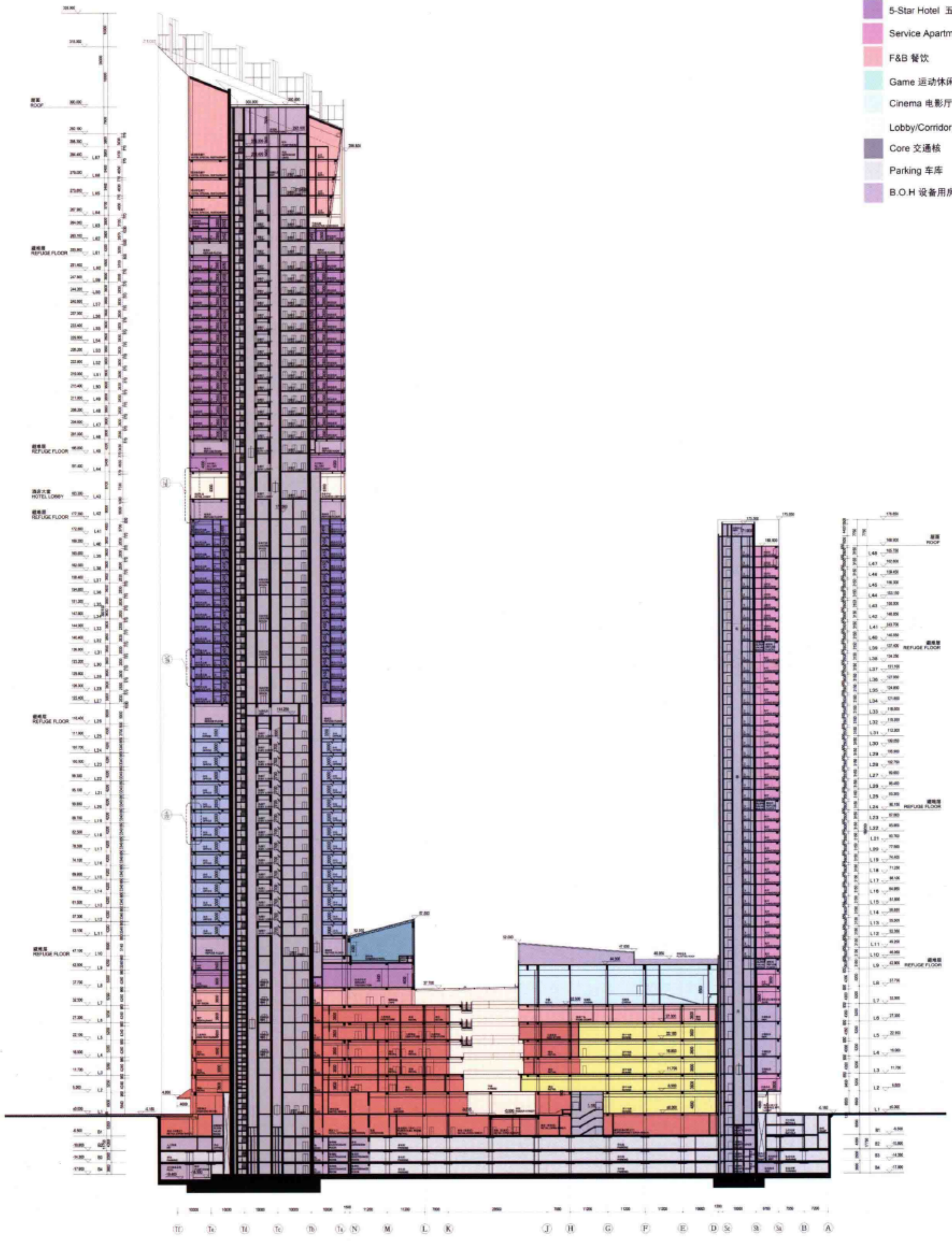
Service Apartment TYP Plan
酒店式公寓标准层平面



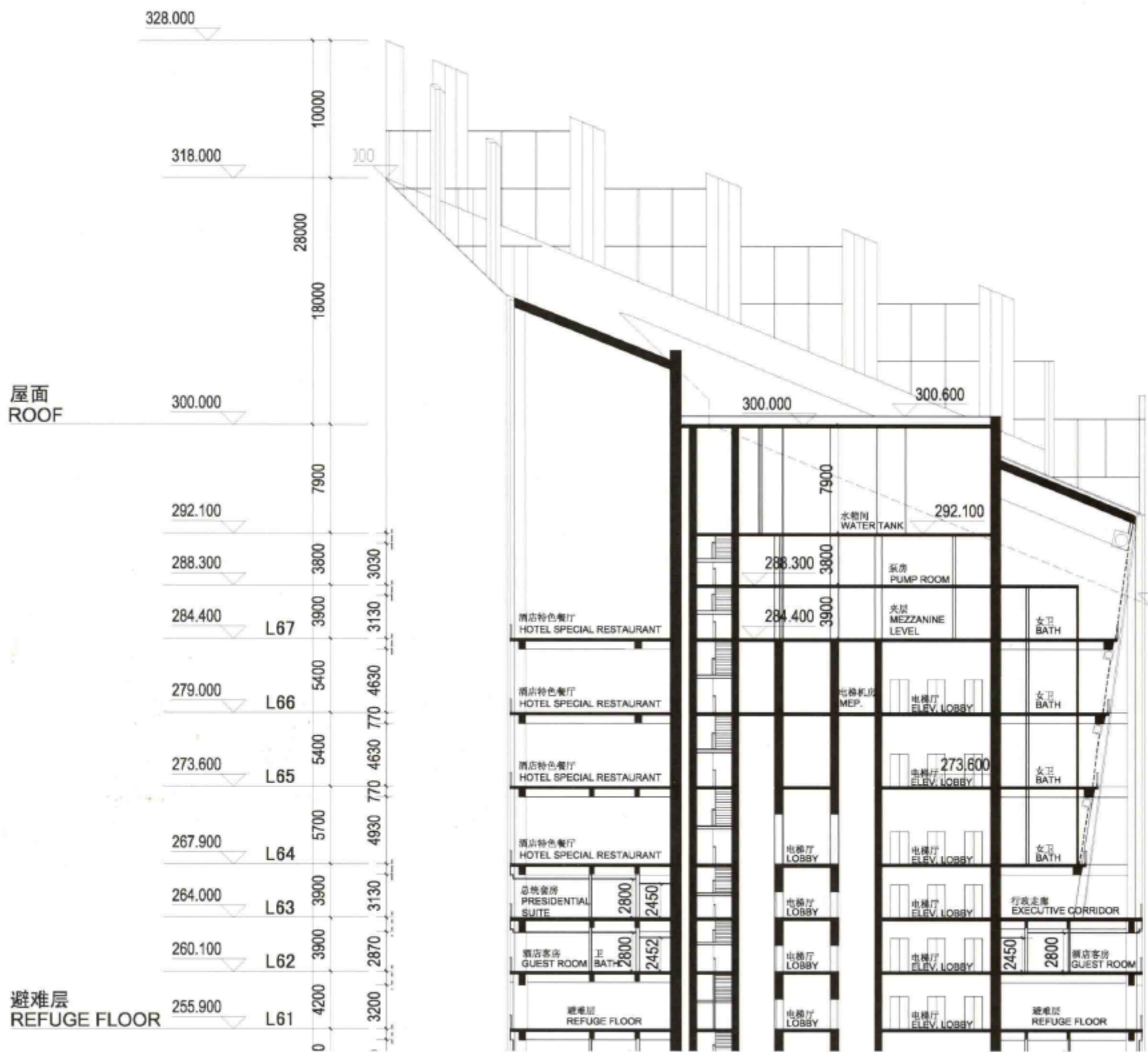
Office TYP Plan
写字楼标准层平面



- Club 俱乐部
- Anchor Store 主力店
- Retail 零售商业
- Suning 苏宁电器
- Office 办公
- 5-Star Hotel 五星级酒店
- Service Apartment 酒店公寓
- F&B 餐饮
- Game 运动休闲
- Cinema 电影厅
- Lobby/Corridor 大堂与走廊
- Core 交通核
- Parking 车库
- B.O.H 设备用房

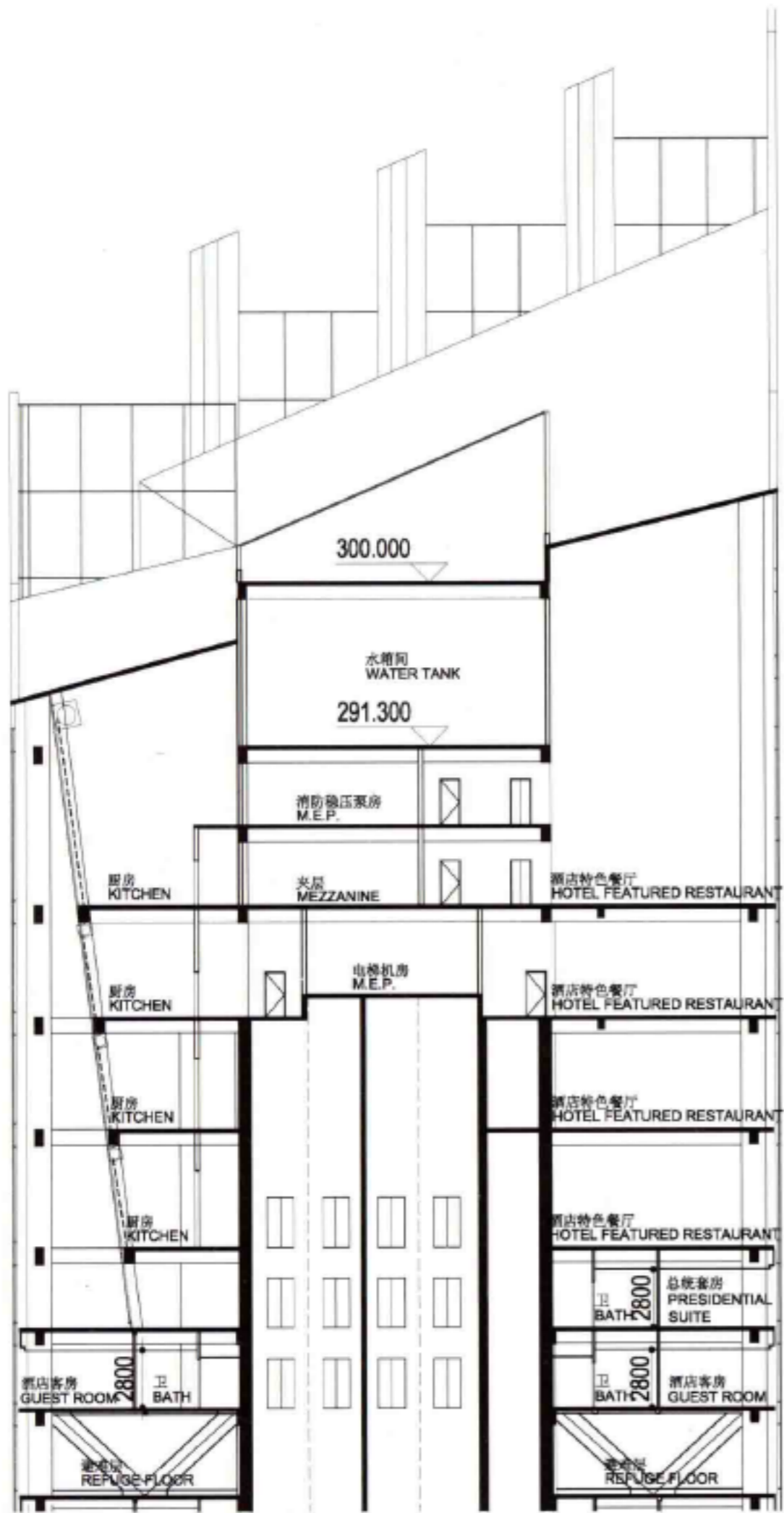


Section 01 剖面图 01



Enlarged Section Lantern 6-6
局部剖面图 顶部 6-6





Enlarged Section Lantern 7-7
局部剖面图 顶部 7-7





