

Features 项目亮点

Inspired by Tianjin's large seaport, the facade takes on the form of bowed hull, which is simple, strong, and iconic. Inside, a large atrium connects with the whole commercial spaces in an open, inviting environment.

设计灵感来源于天津巨大的海港，船状的立面造型简洁、雄伟而又具有标志感，内部通过一个大型的中庭连接起整个商业空间。

Key Words 关键词

Urban Complex in CBD

CBD 型城市综合体

King Wai Commercial Project

经纬置地滨海商业项目

Shape of Seafaring Vessel 航船造型

Central Atrium 内部中庭

Elements of Seaport 海港元素

Location: Tianjin, China

Client: King Wai Landmark

Architectural Design: Kaziali Design Collaborative

Designer: Clay Vogel, AIA, Roman Halat, RIBA, Liu Chuan

Total Land Area: 41,537 m²

Total Floor Area: 117,832 m²

Design: 2012

项目地点: 中国天津市

业 主: 经纬置地

建筑设计: 凯佳李建筑设计事务所

设 计 师: 克雷·沃格尔、AIA、罗曼·哈雷特、RIBA、刘川

总用地面积: 41 537 m²

总建筑面积: 117 832 m²

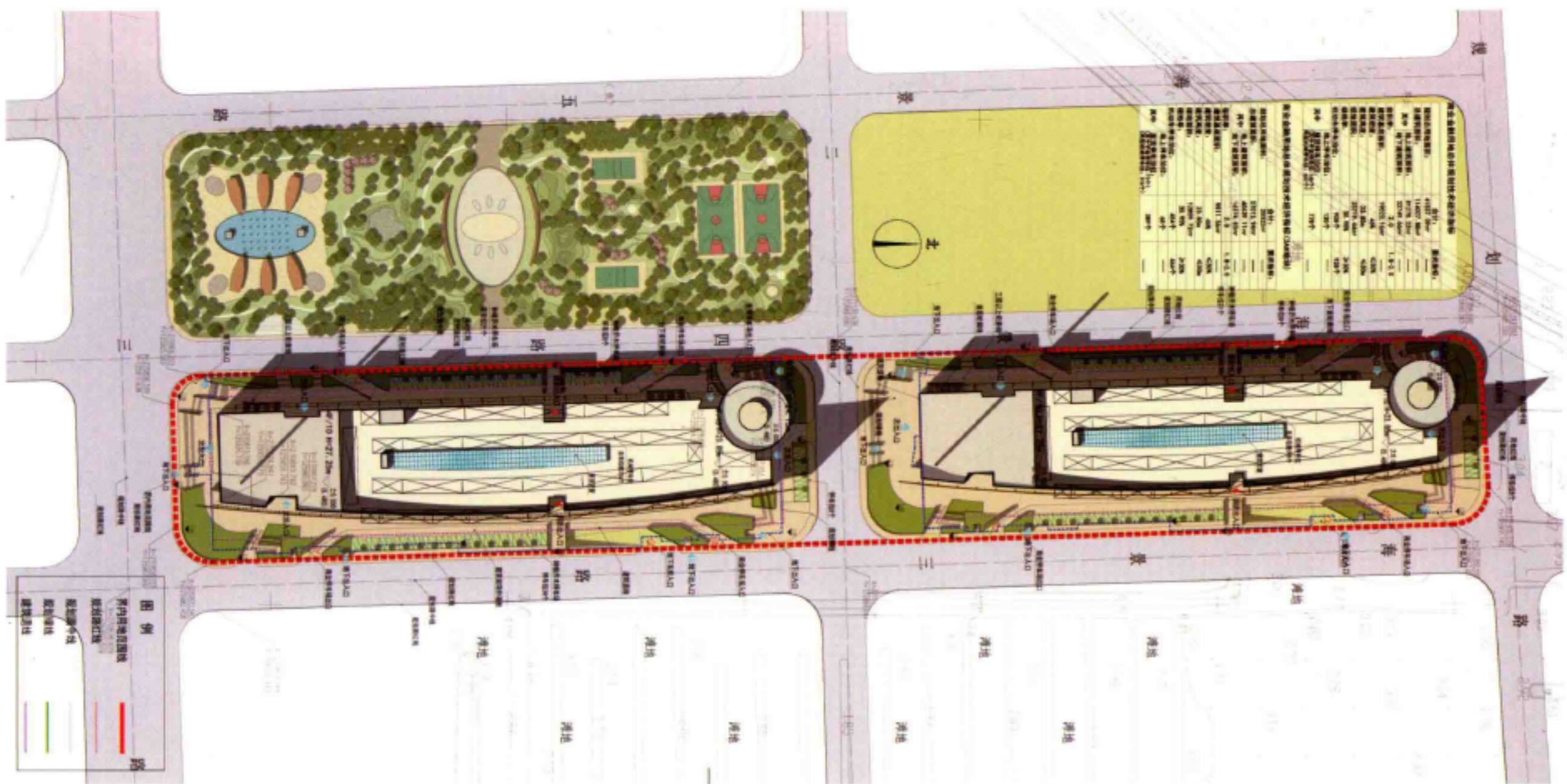
设计时间: 2012 年

» Overview

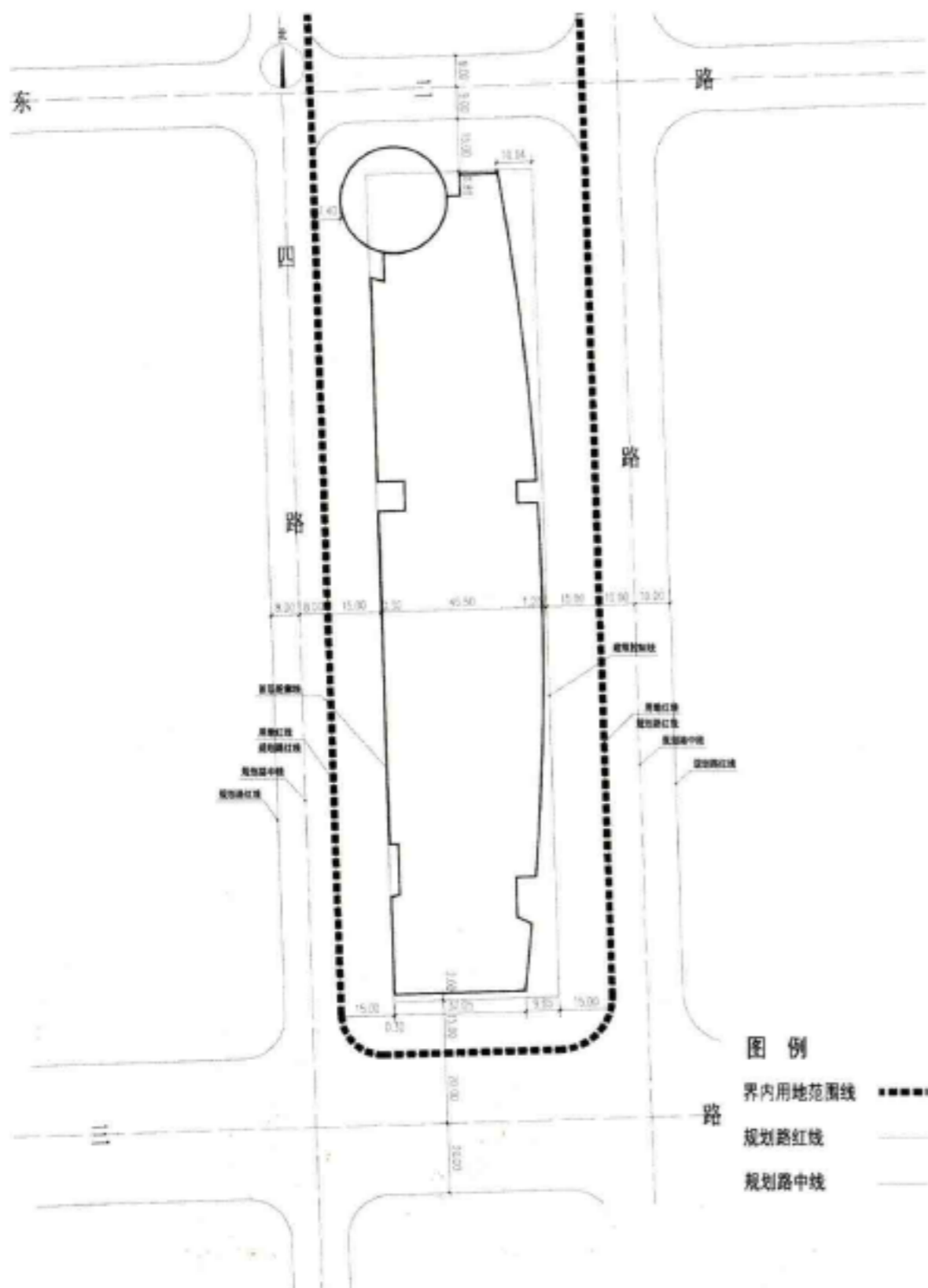
The King Wai Commercial Project is located in the Binhai New Zone of Tianjin, bordering to Haijing Third Road on the east, Haijing Fourth Road on the west, the Gangdong Third Road on the south and the Gangdong First Road on the north. It takes only minutes to the Bohai Sea. The total site area is 41,537 m² and the total floor area is 117,832 m², of which 84,400 m² are over ground and 33,432 m² are underground. The project will greatly promote the development of Tianjin's seaport trade.

» 项目概况

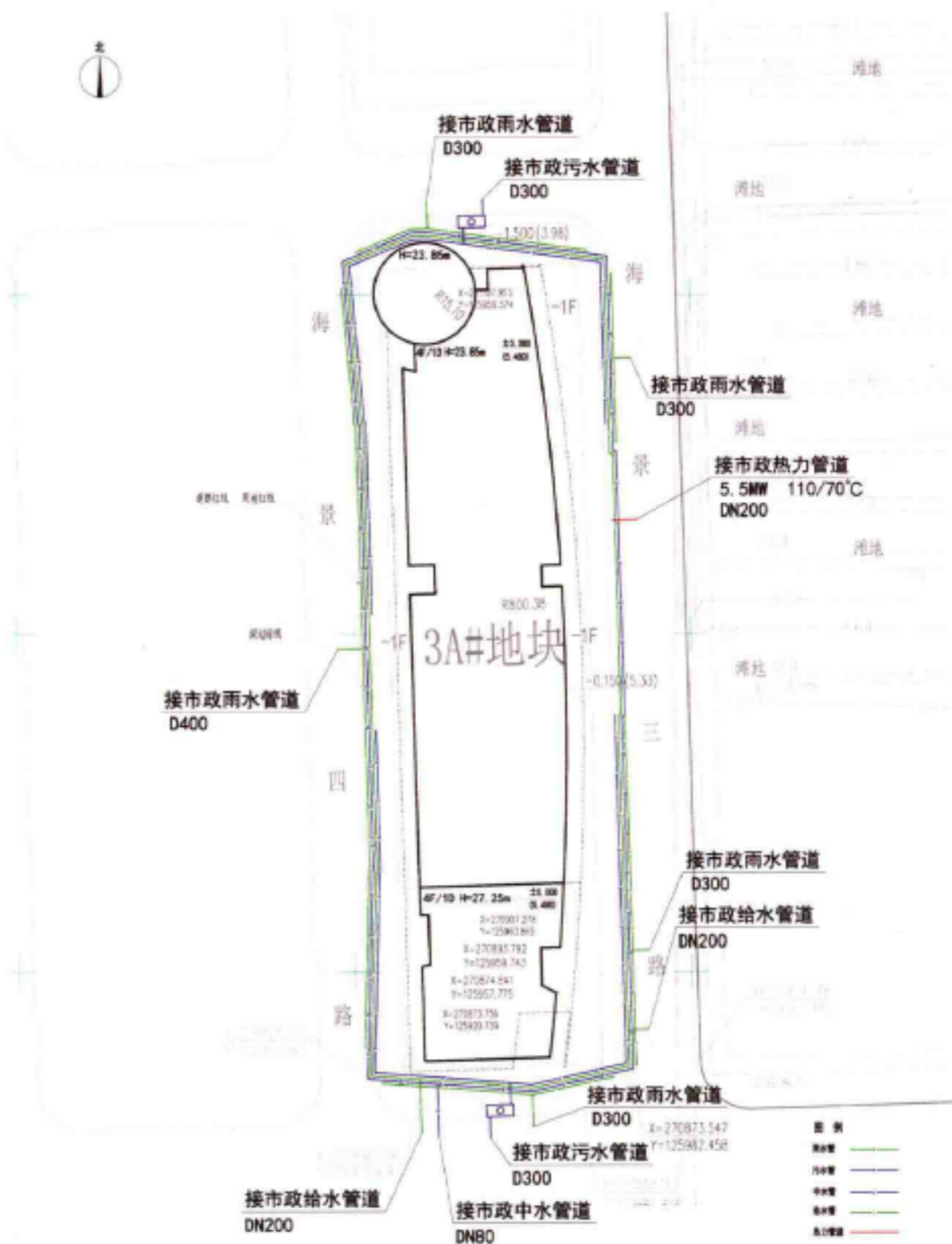
经纬置地滨海商业项目位于天津前大港地区（现滨海新区），东至海景三路，西至海景四路，南至港东三道，北至港东一道，到渤海的路程只有几分钟。项目总规划面积为 41 537 m²，总建筑面积为 117 832 m²，其中地上面积为 84 400 m²，地下建筑面积为 33 432 m²。项目的建设将对天津海港贸易的发展具有重要的作用。



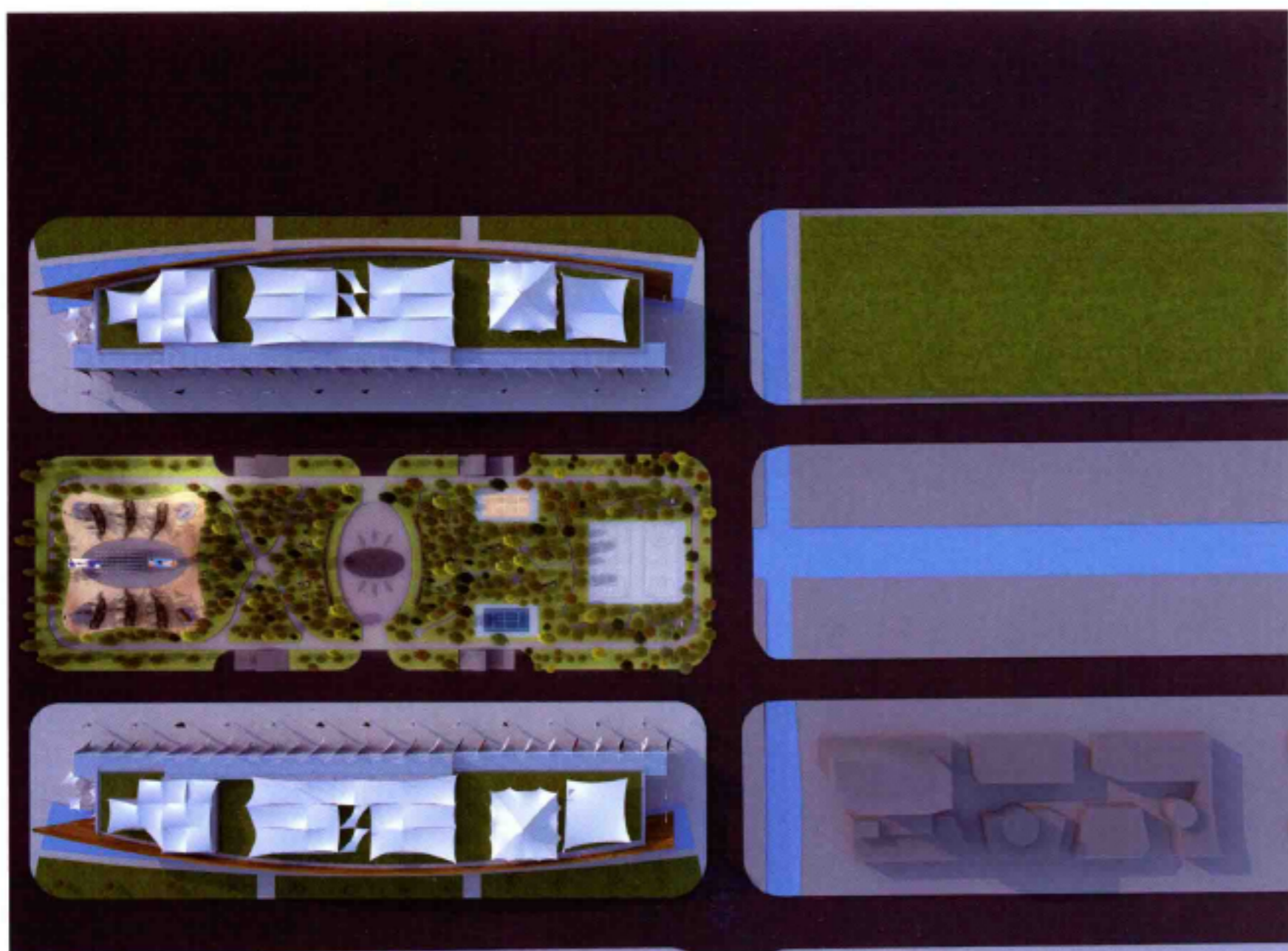
Regulation Plan 规则总平面图



Building control floor plan 建筑控制平面图



Pipe network diagram 综合管网规划图

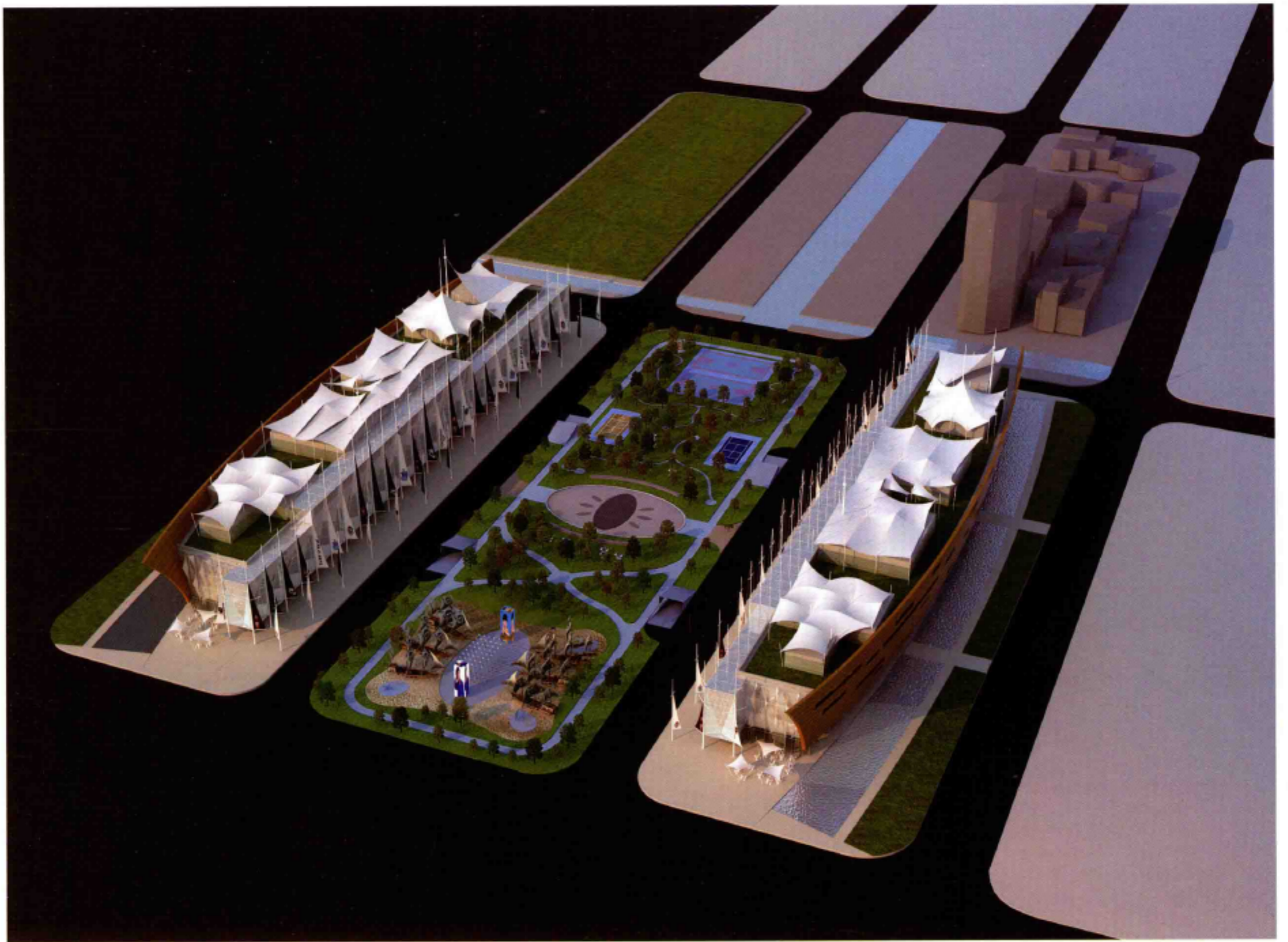


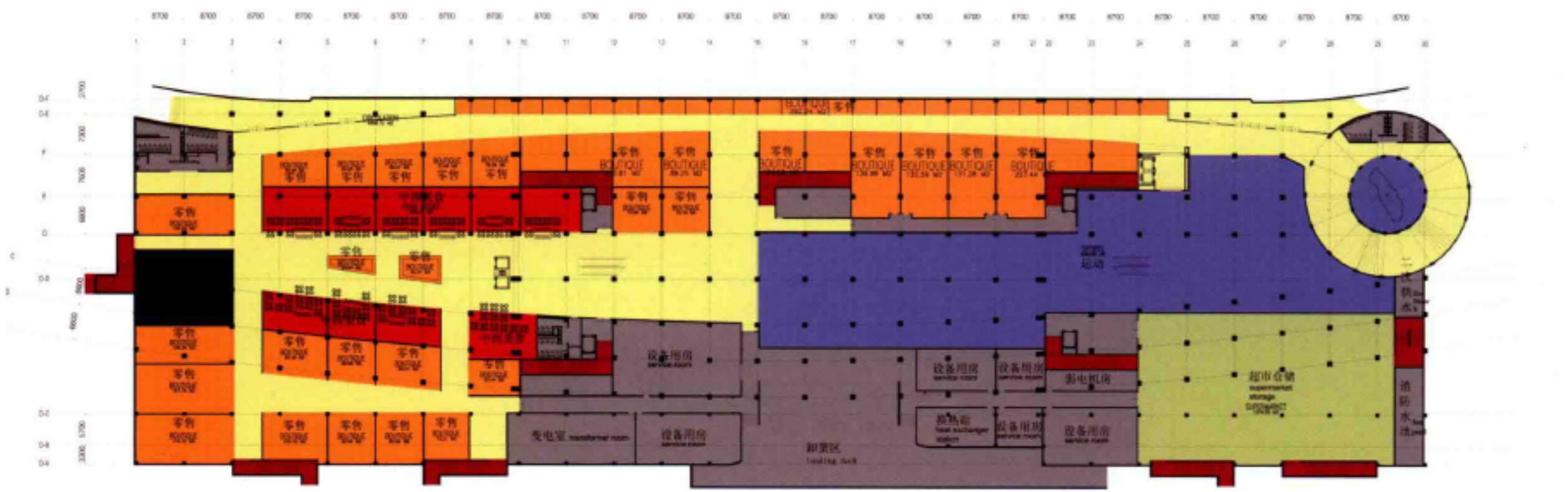
» Architectural Design

Inspired by Tianjin's large seaport, the exterior features elements of seafaring vessels. The east facade takes on the form of bowed hull, which is simple, strong, and iconic. The north, south, and west facades' boxy faces imitate the lines of shipping containers. Inside, a sky-lit atrium connects commercial spaces in an open, inviting environment.

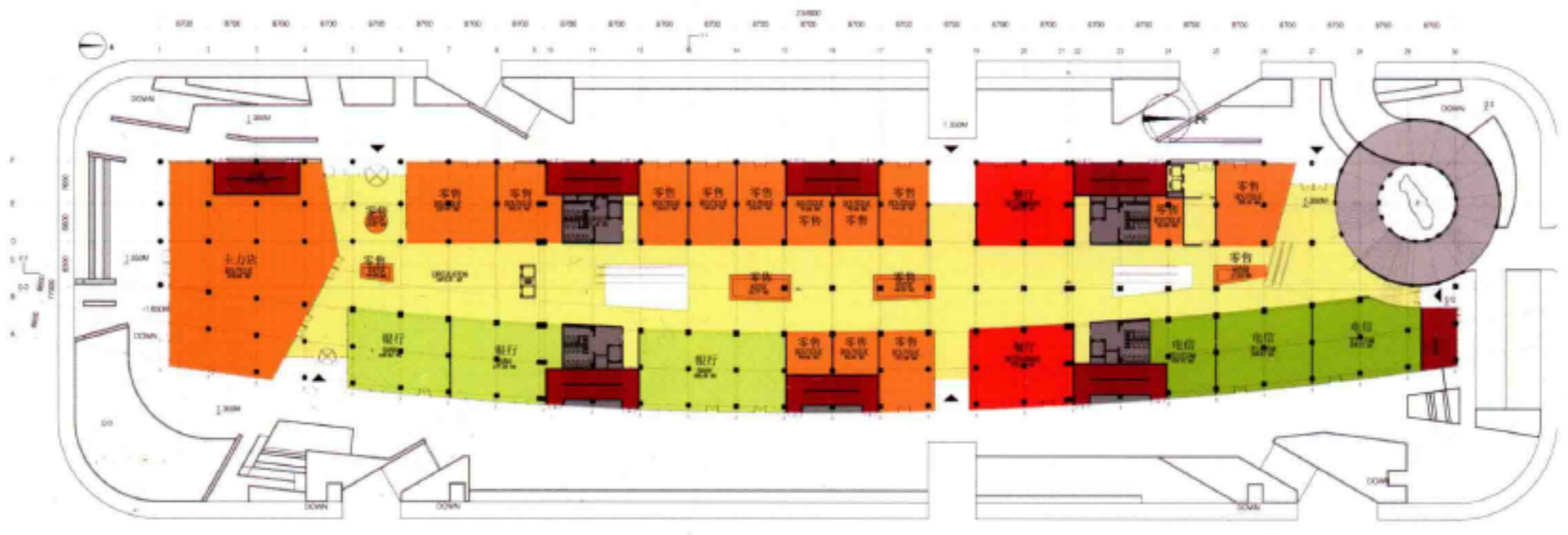
» 建筑设计

设计灵感来源于天津巨大的海港，外观特征是航海的船只。东边的立面做成有如船只立面的弯曲状，样式简单、雄伟，且具有标志性。北边、西边、南边的外立面是四方的外型，模仿的是船的集装箱。在内部中心的位置，有一个露天的中庭共享空间连接商业空间。



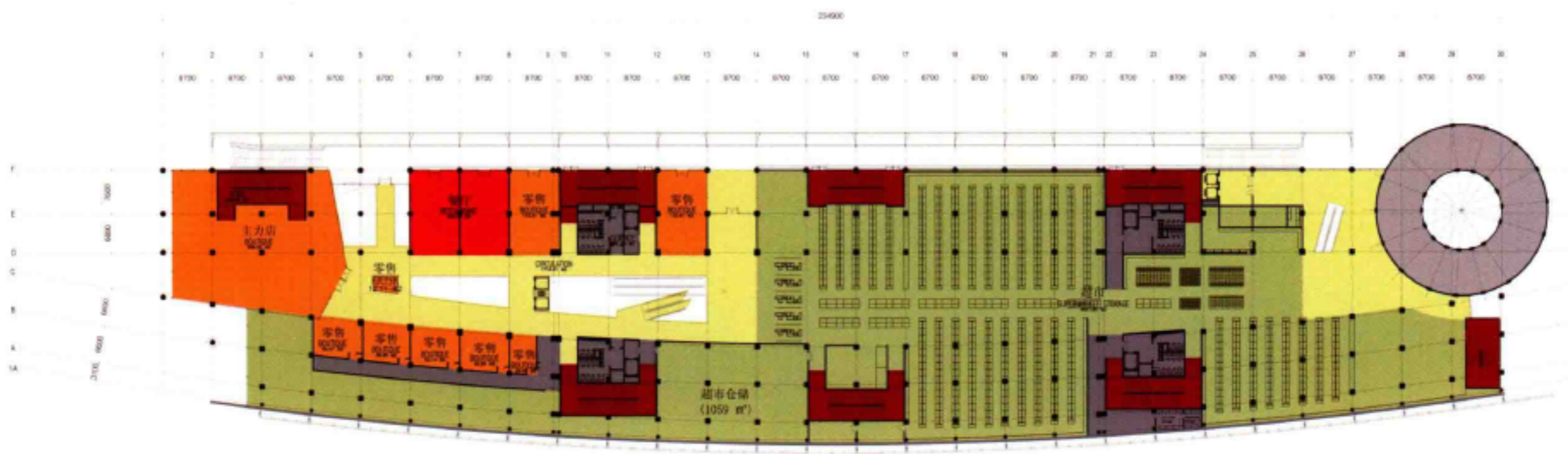


Basement Floor Plan 地下室平面图



First Floor Plan 一层平面图





Second Floor Plan 二层平面图



Third Floor Plan 三层平面图

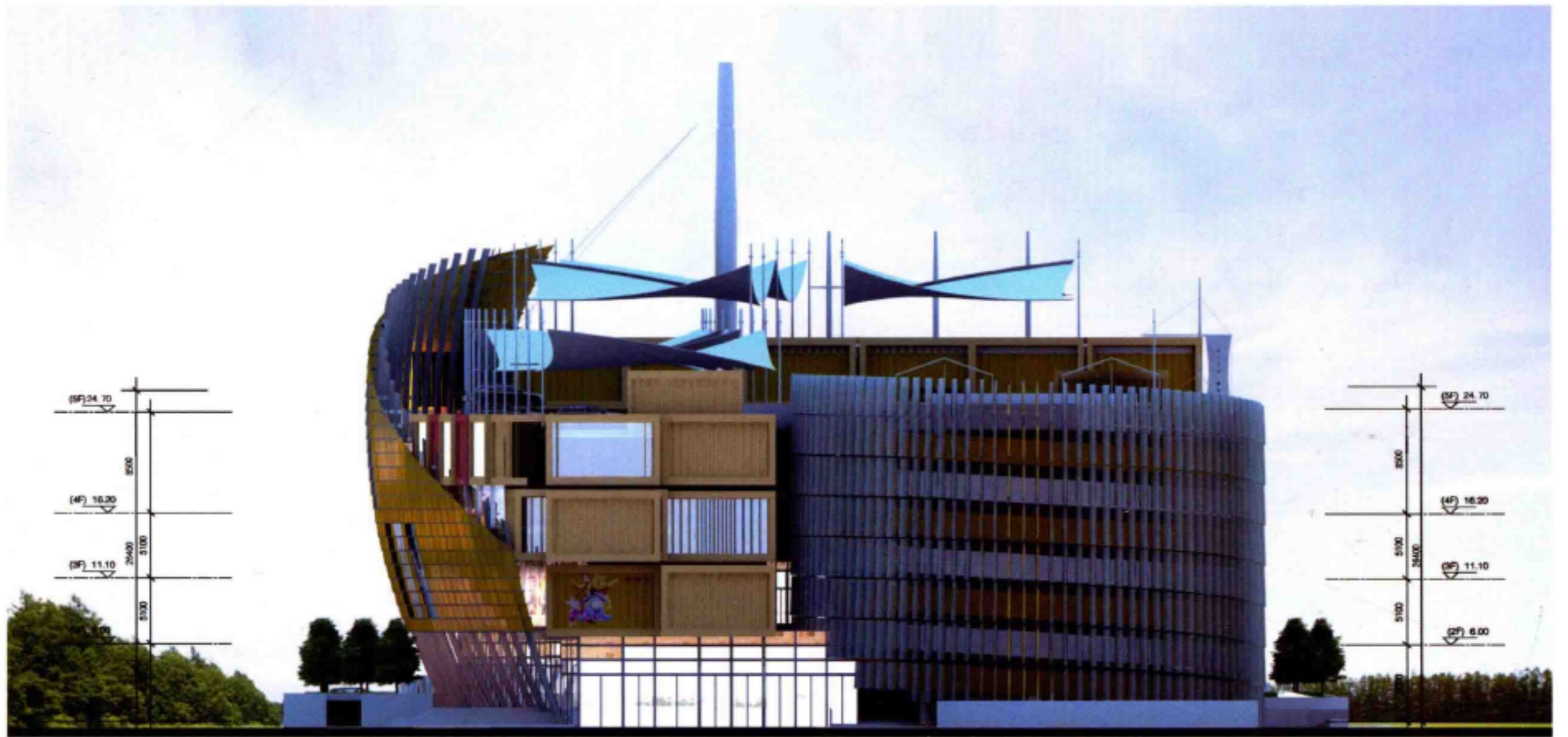




West Elevation 西立面图



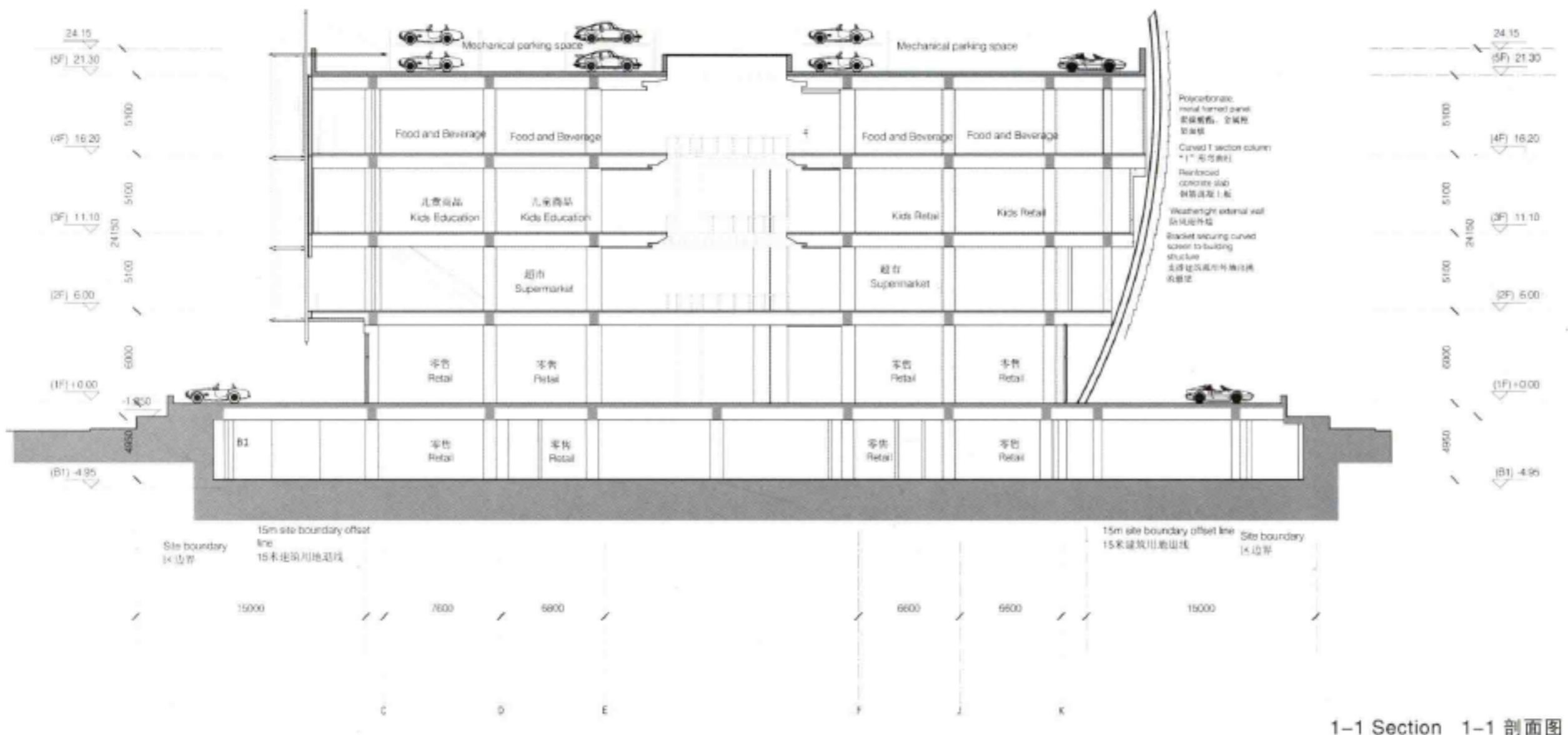
South Elevation 南立面图



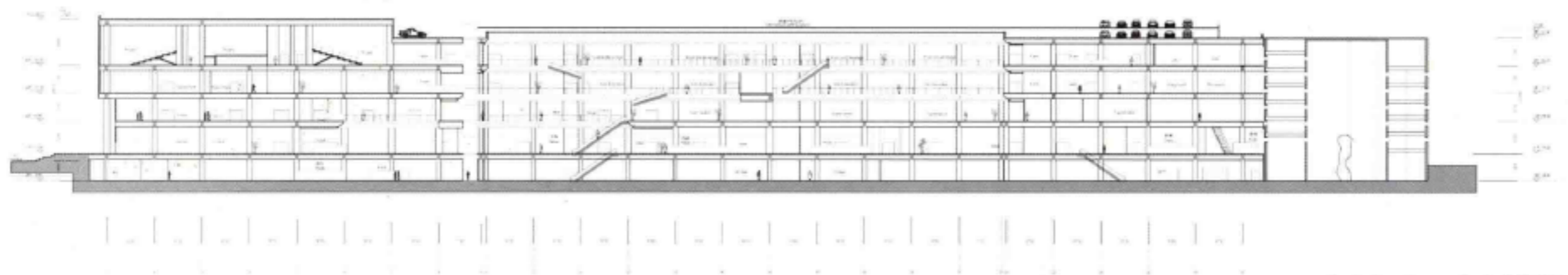
North Elevation 北立面图



East Elevation 东立面图

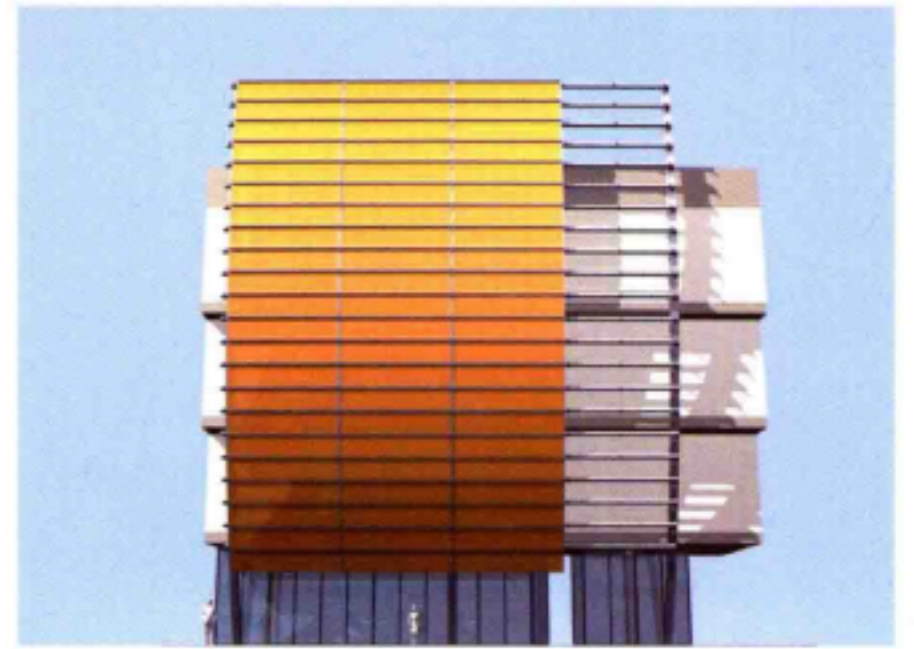
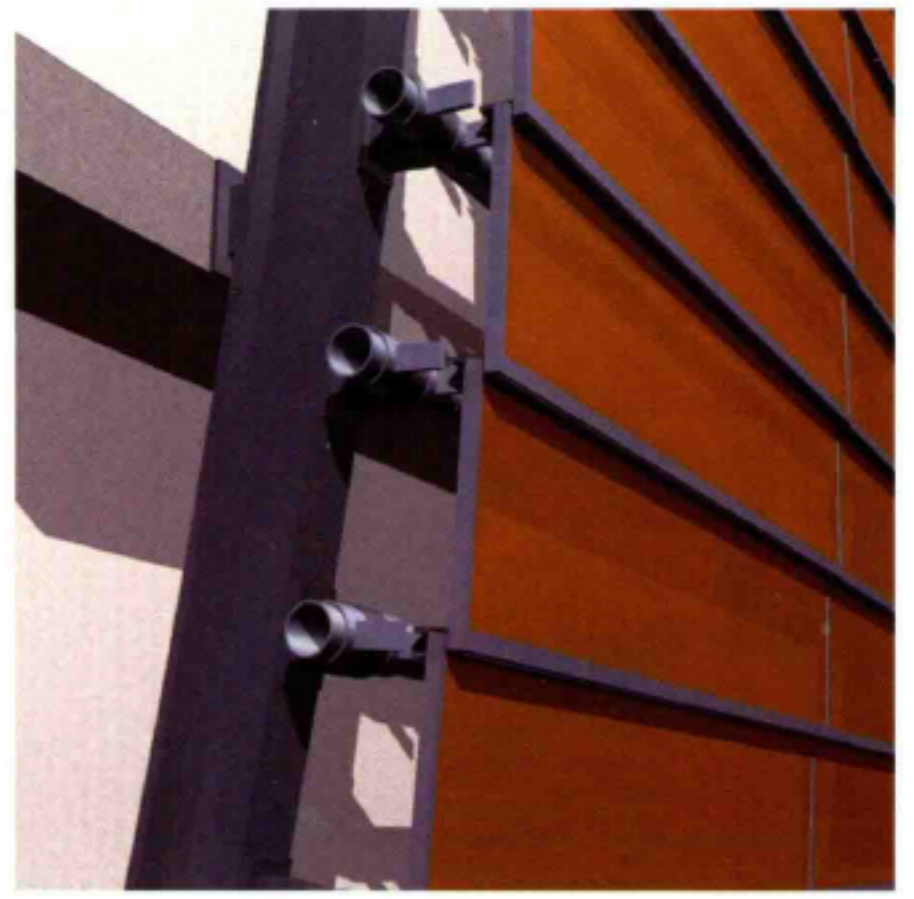
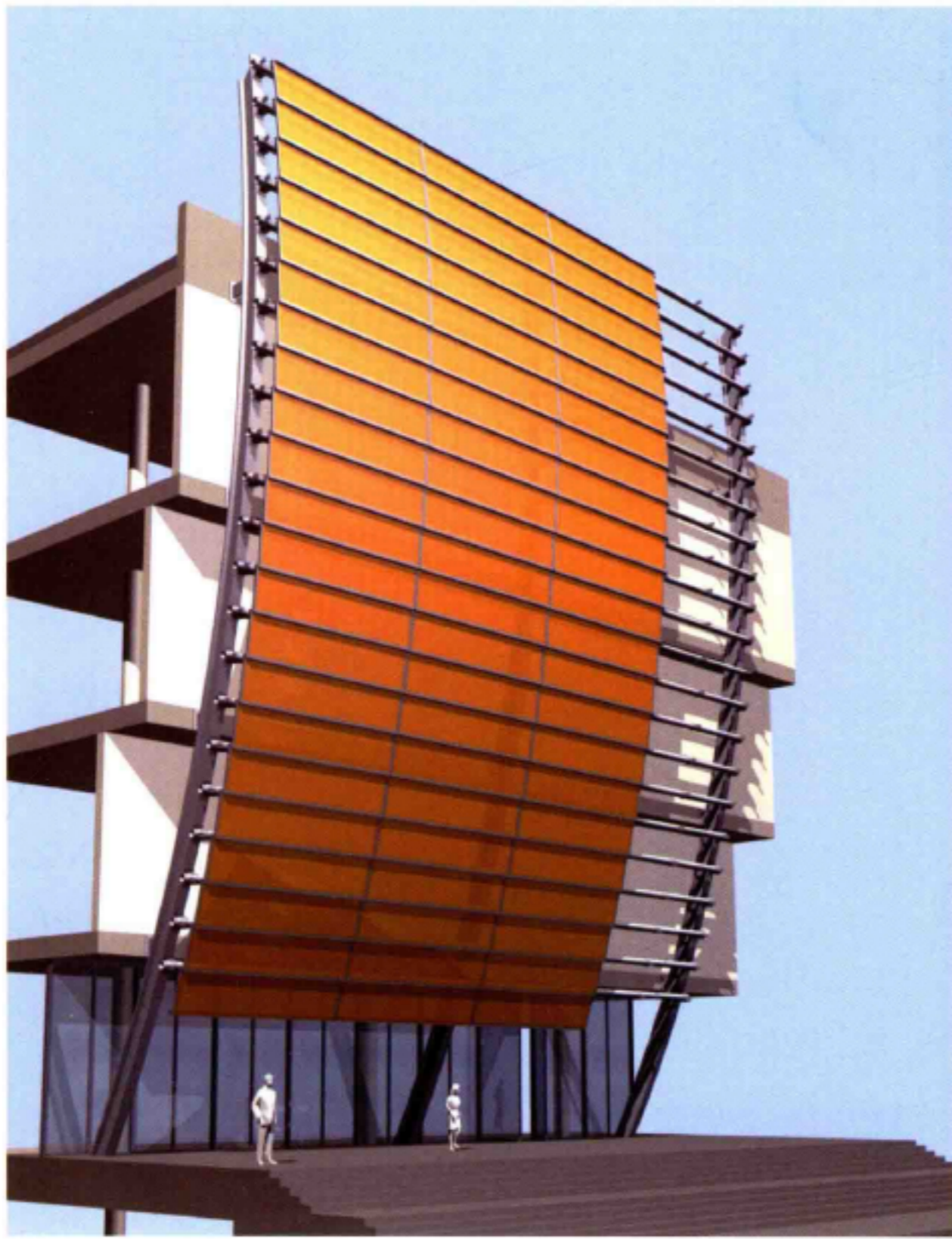


1-1 Section 1-1 剖面图

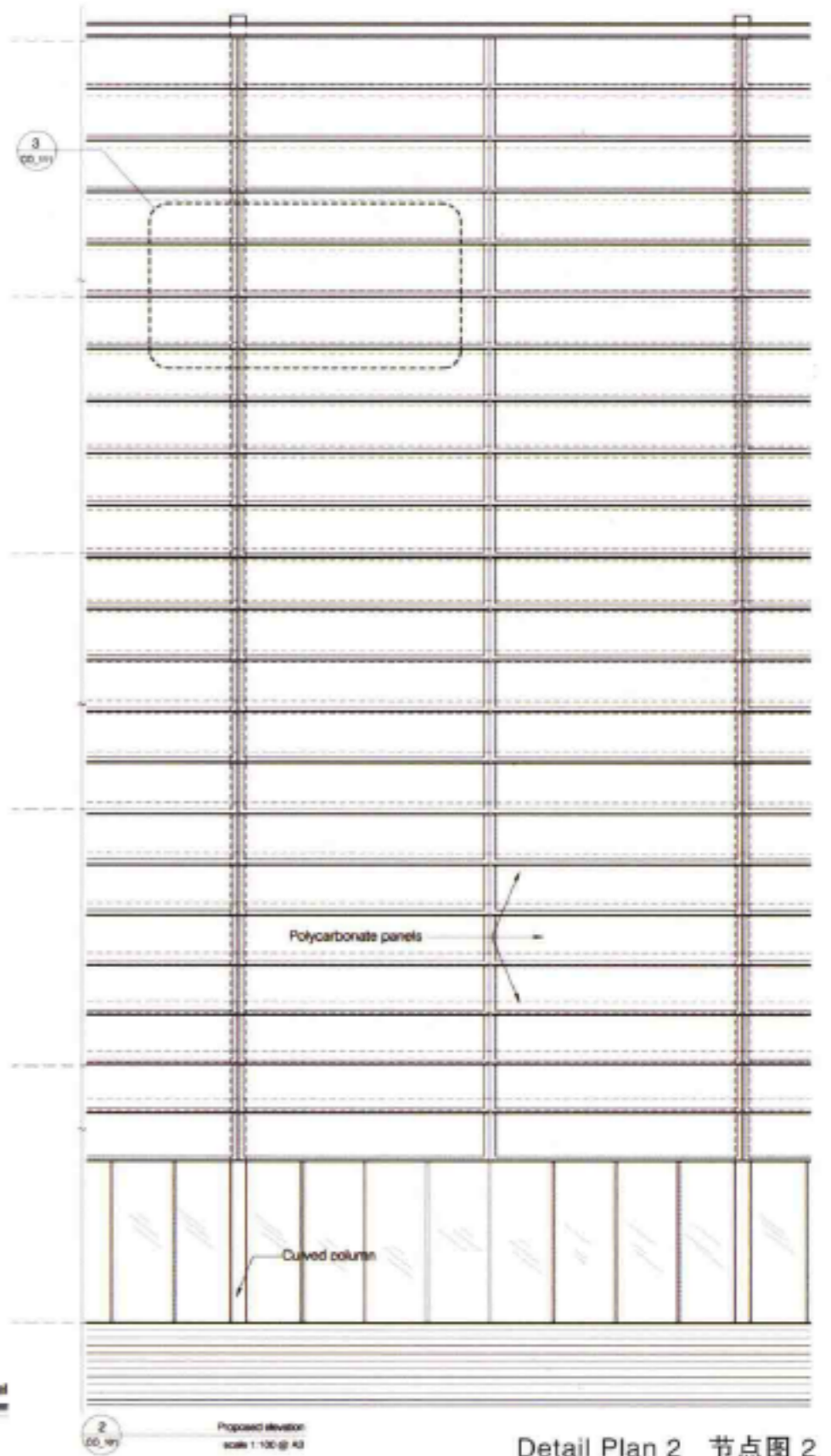
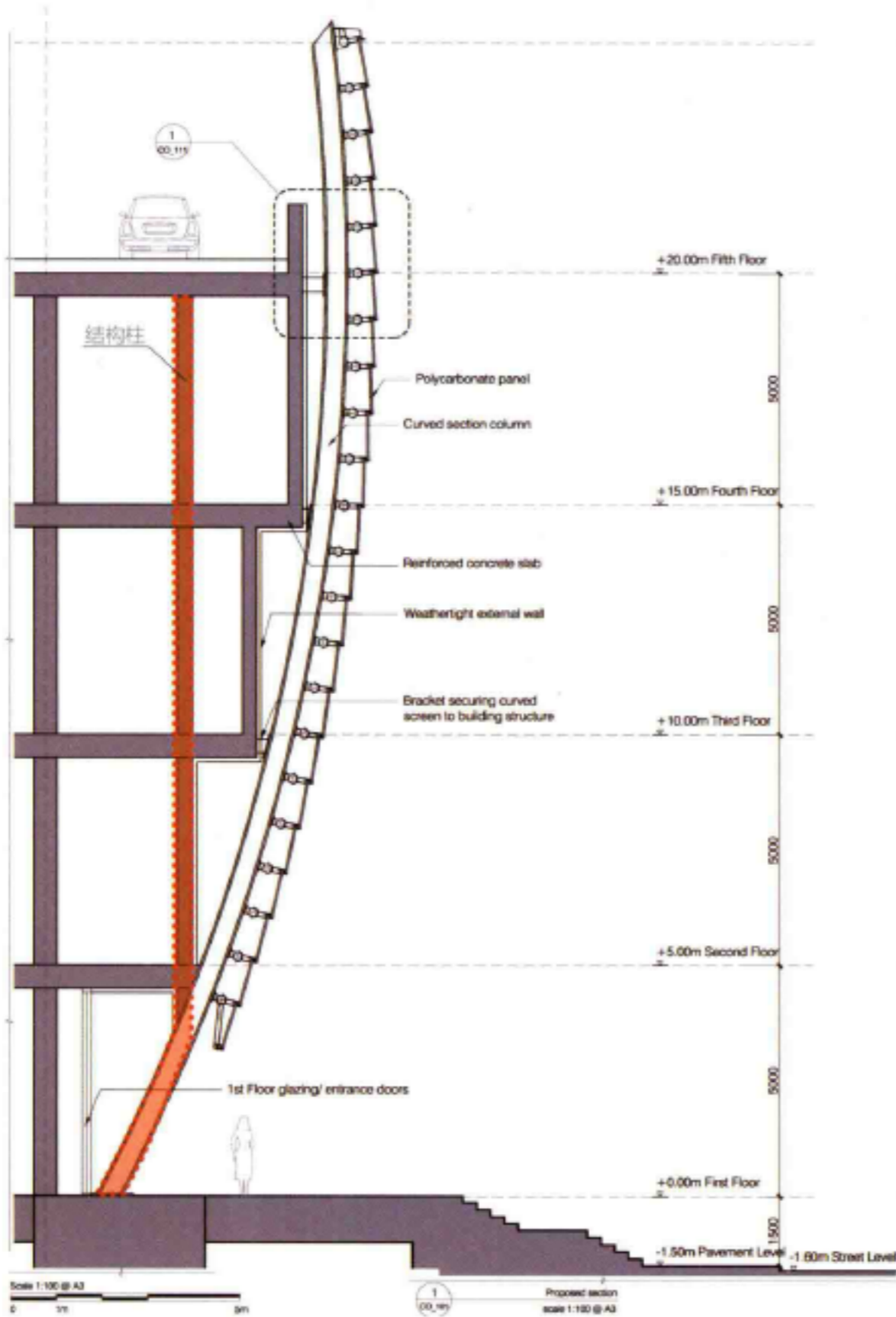


2-2 Section 2-2 剖面图



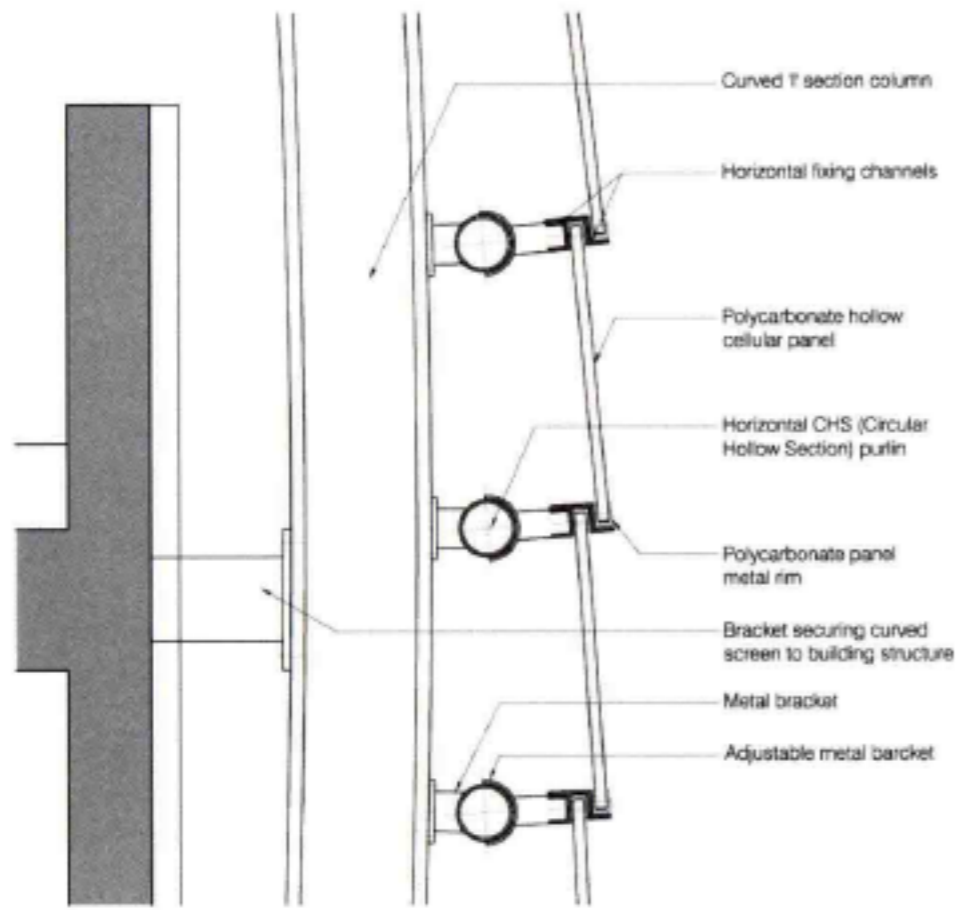


Detail Plan 1 节点图 1

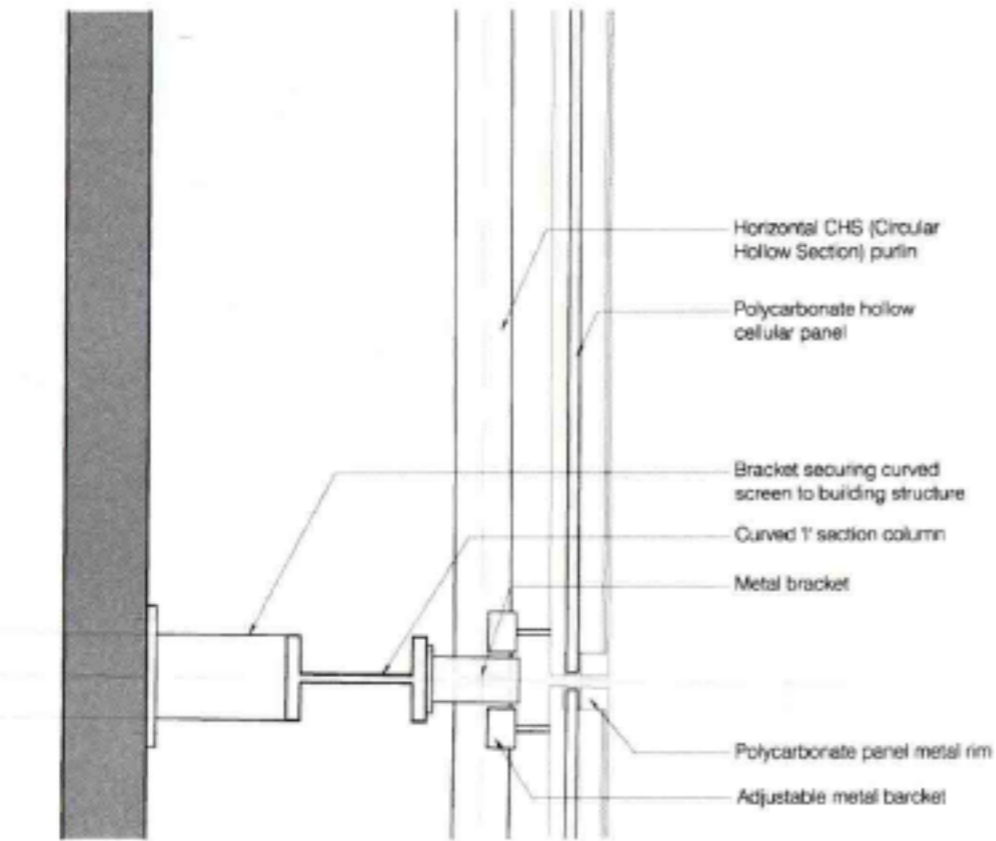


Detail Plan 2 节点图 2

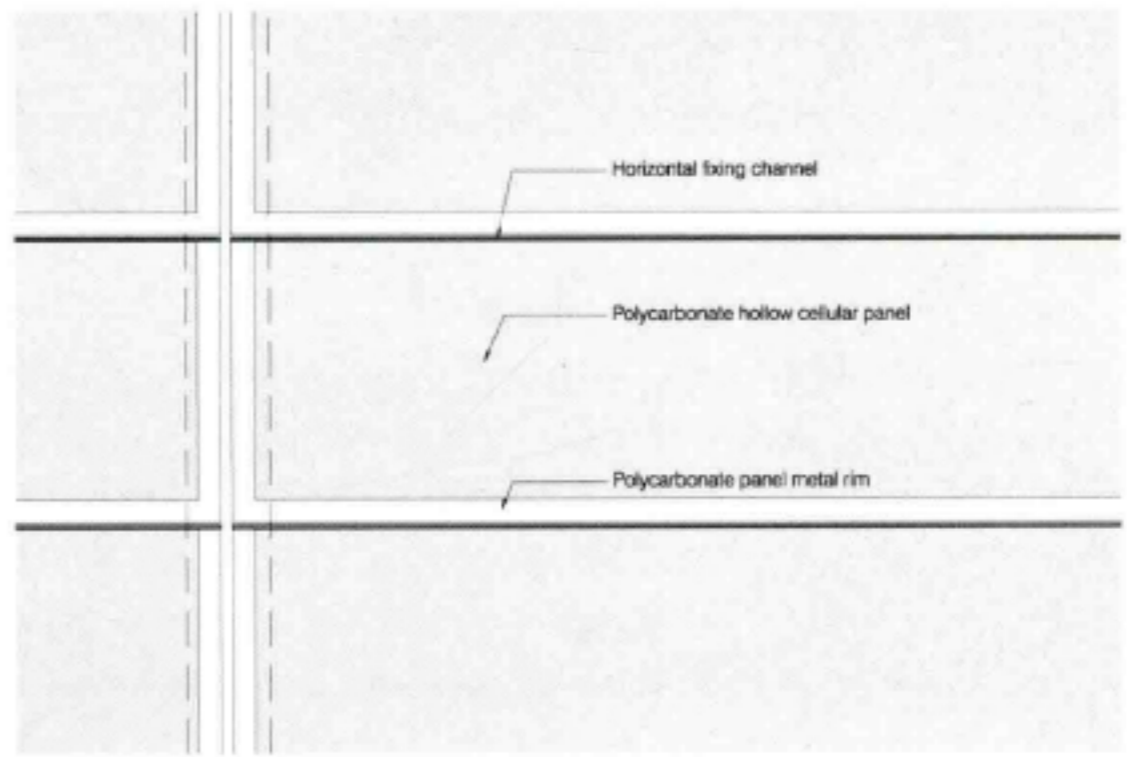




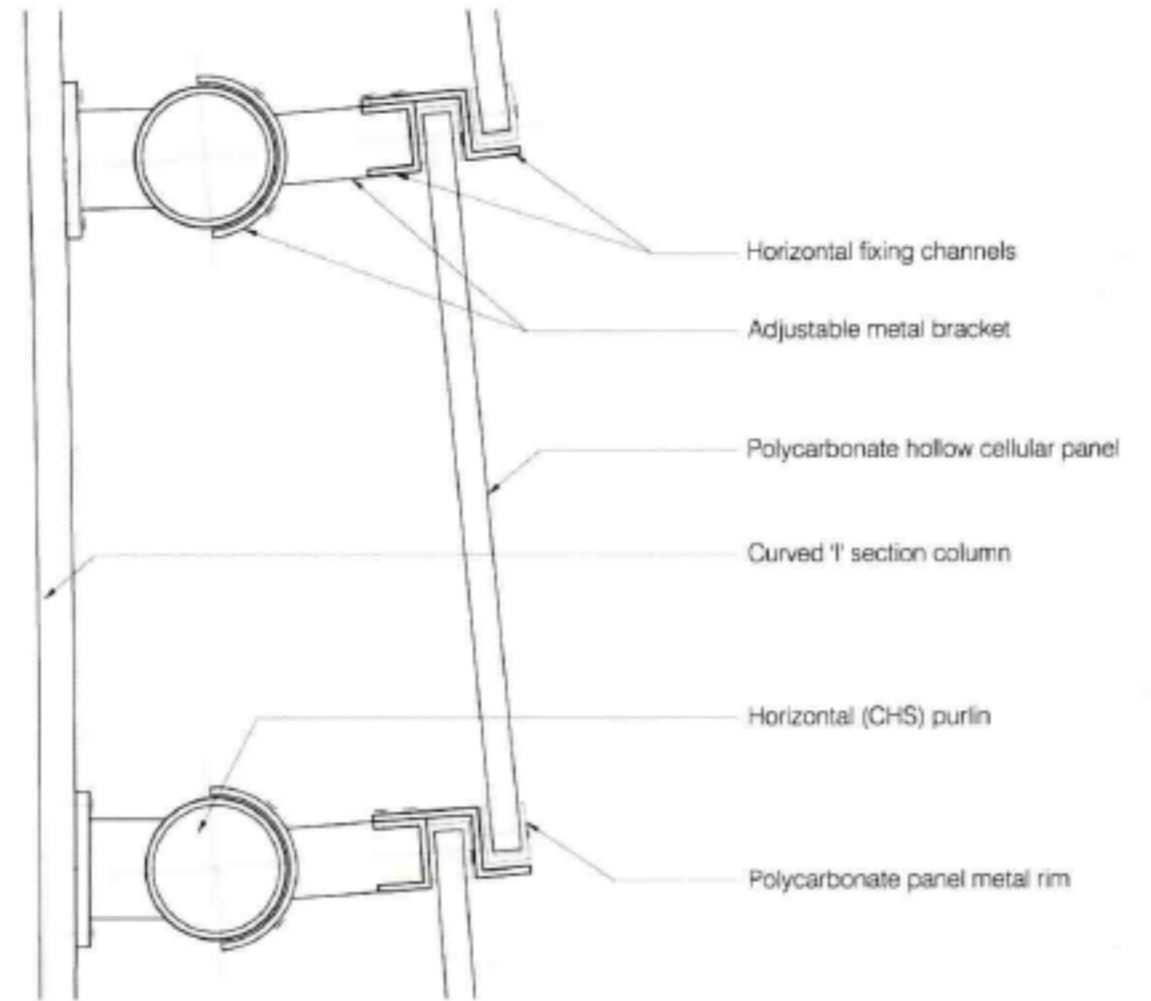
1 Facade detailed section
scale 1:25 @ A3
CD_111



2 Facade detailed plan
scale 1:25 @ A3
CD_111



3 Facade detailed elevation
scale 1:25 @ A3
CD_111



4 Detailed section
scale 1:10 @ A3
CD_111

Detail Plan 3 节点图 3

