



General view 全景图

Headquarters of the Environment Service and Public Spaces

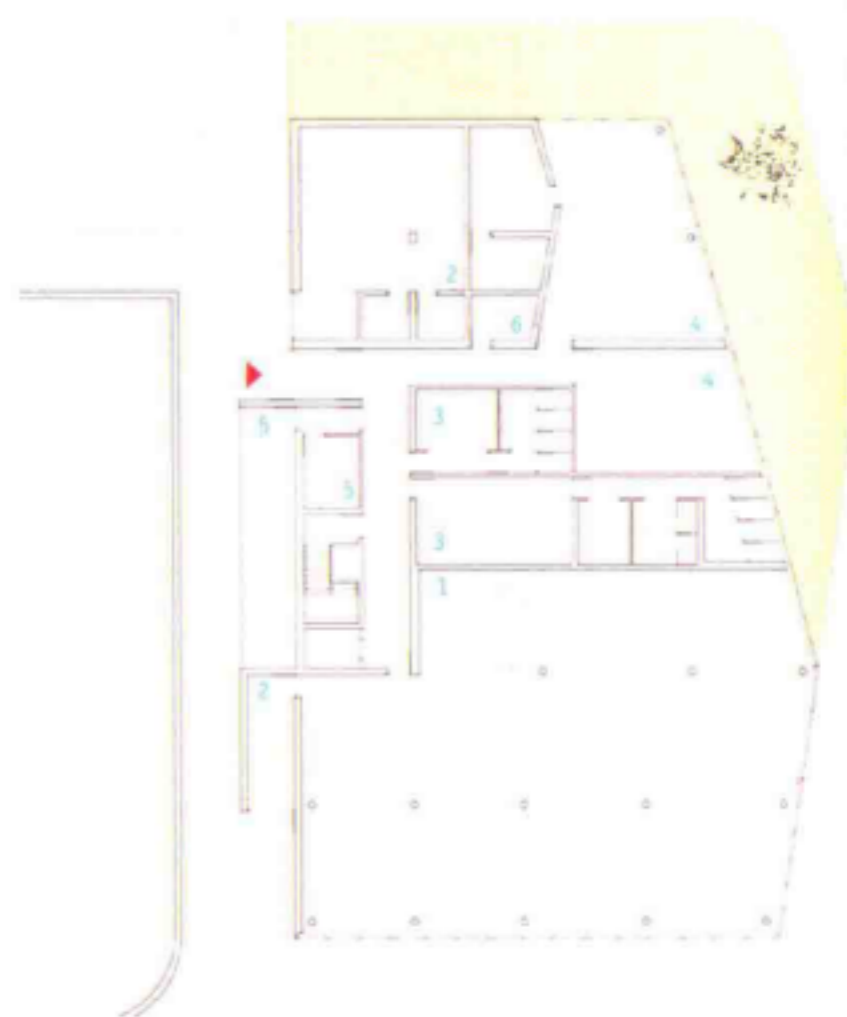
The building houses the Forestry and Natural Areas Departments of Zaragoza City Council. Situated in the centre of the city, next to the Almozara bridge, the site has considerable differences in level, about five metres between the avenue and the square at the upper level and the Ebro riverbank park. The relationship with the adjacent urban spaces and the topographic features of the site become active conditions for the implementation of the building; it can clearly be seen in the project section that the extension of the public space of the entrance is also expressed, via the roof and the configuration of the building as a platform-viewpoint onto the Ebro River.

Given the differences in level of the site, the main entrance to the building is on the upper floor, which houses the administrative spaces and the environmental hall. The main hall joins and separates spaces, enabling them to be used independently. The restricted access offices of the Forestry and Natural Areas Departments are located below the entrance level, in the basement. This lower floor has pedestrian and vehicle access from the Riverbank Park.

环境服务和公共空间总部

建筑里设置着萨拉戈萨市政府的林业和自然区部门，位于城市中心，紧邻阿尔莫扎拉桥。该地区的地势差很大，在上方的街道、广场与埃布罗河畔公园之间有5米高的地势差。与周围城市空间和场地地形特征联系是建筑建造的活跃因素，这从建筑的剖面、公共空间的入口、屋顶和建筑的形态都得以体现。整个建筑即是俯瞰埃布罗河的景观平台。

由于场地的地势差，建筑的主入口被设在了建筑的上层，直通行政空间和环境大厅。主大厅连接着独立的空间，使它们可以被独立地使用。林业和自然区部门被设在下层地下室。行人和机动车可以从河畔公园直接进入下层空间。



1. garage
2. warehouse
3. locker room
4. staff rooms
5. installations
6. utility room

1. 车库
2. 仓库
3. 更衣室
4. 办公室
5. 基础设施
6. 杂物房



Elevation from Europe Square 从欧洲广场看建筑立面



露天剧场 Open-air amphitheatre



从欧洲广场看建筑 View from Europe Square



办公室 Offices

Photo: Pedro Pegenaute

Completion Date: 2009

Architect: Magén Arquitectos (Jaime Magén, Fco. Javier Magén)

Corporate