



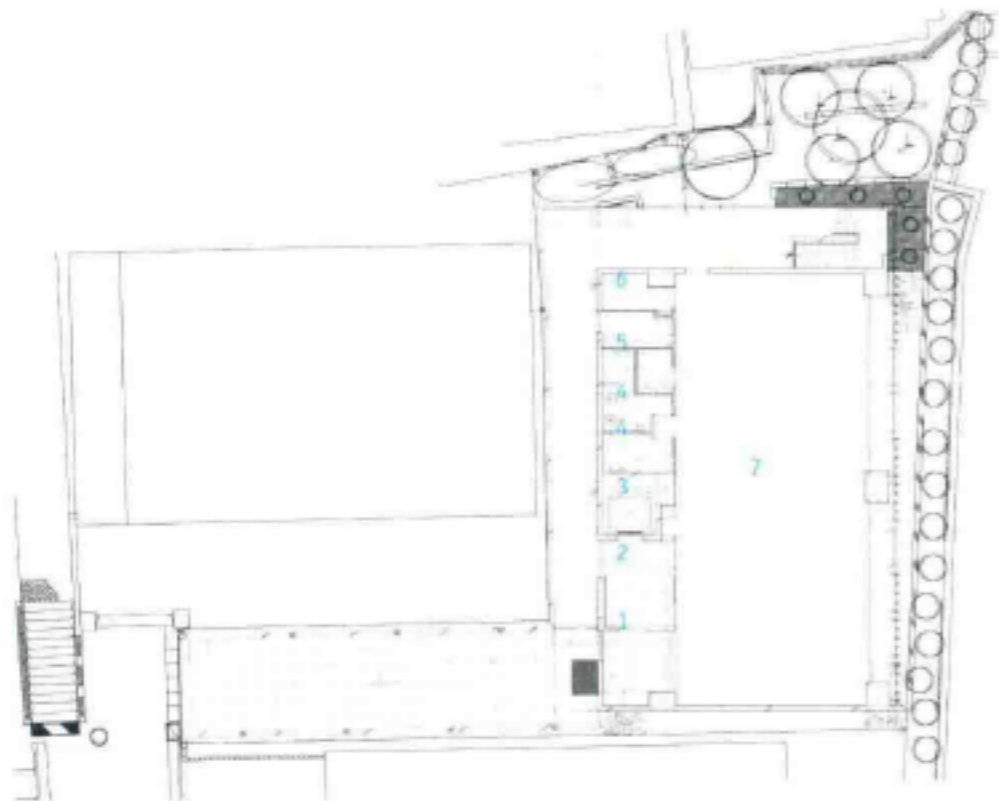
Façade 建筑外观

Akasaka Phoenix

The location of the site is around fifty metres far back from the heavily-trafficked main street, where we get the impression of quiet in a high-density city. The east side of the site faces "city air pocket" where is the open space of the complex facility, and it has a spacious atmosphere. For that reason, there is no concern about eye gaze from neighbours, and the internal space can get enough sunlight and natural ventilation. Since the site level is about six metres up from the road in front, the building has a high level of visibility. The designers have reinforced identity of the building by giving strong design impact on the east side, and tried to differentiate it from surrounding buildings.

It can be said that one of the characteristic design aspects of this building is louvres of the façade. Five louvres are made into a unit and each unit controls outside environment such as direct sunlight, eye gaze from outside and so on. In order to create comfortable indoor condition, the units consist of eight different patterns and each unit is arranged according to the function. For instance, upward horizontal louvre is used abundantly for shielding of direct sunlight.

Moreover, the louvres show various expressions according to the angle and direction of attachment. These variations give motion to the façade and create deep shade which gives dignity to a building. The louvres are coloured in vivid royal blue and a white and their expression change with the positions of eyes. The façade of Akasaka Phoenix is rich in diversity and creates a new city landscape.



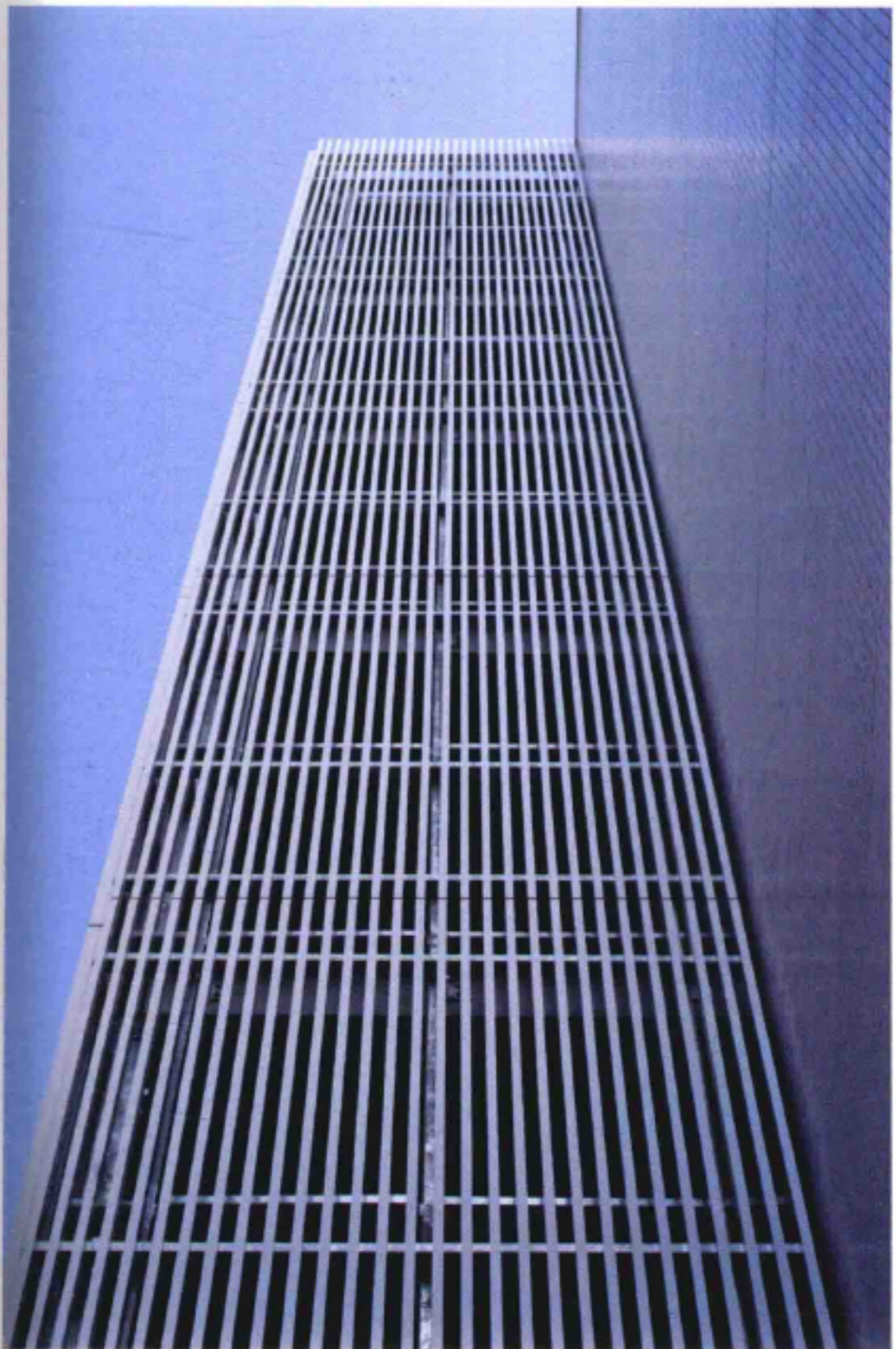
赤坂凤凰楼

建筑地点距离交通繁忙的街道50米，远离喧嚣的都市。场地的东侧是一片开阔的“城市气囊”——一片空地。因此，建筑既不会担心隐私被窥视，又可以得到充分的阳光和良好的通风。由于建筑场地离街面有6米高，建筑的视角相当高。设计师在建筑的东面加入了极具个性的元素，使其从周围的建筑中脱颖而出。

建筑设计最显著的特点就是外墙的百叶窗结构。五扇百叶窗形成一个单元，每个单元都能够控制阳光直射、保护内部隐私。为了营造舒适的室内环境，整幢大楼根据不同功能需求采用了八种不同的外墙单元结构。例如，上升式百叶窗被用于屏蔽阳光直射。

不同位置和角度的百叶窗形成了多样化的视觉效果，使外墙看起来丰富多彩，为建筑树立了个性。百叶窗被漆成活泼的宝蓝色和白色，随着视觉角度的变化，它们的颜色也不尽相同。赤坂凤凰楼的外墙以其独具特色的视觉效果为城市添加了新景观。

1. 入口
 2. 电梯大厅
 3. 电梯
 4. 洗手间
 5. 员工厨房
 6. 仓库
 7. 办公室
1. entrance
 2. lift hall
 3. lift
 4. WC
 5. staff kitchen
 6. storage
 7. office



建筑细部 Details



不同角度看建筑 Different view



窗户 Windows



建筑内部 Interior

Photo: Takumi Ota

Architect: Atsushi Kitagawara

Corporate

Completion Date: 2008